

# Cambridge



# Crystal Ball

ISSUE NO. 72

APRIL 1979

Published monthly by the National Cambridge Collectors, Inc.  
To encourage and to report the discovery of the elegant and boundless product  
of the Cambridge Glass Company, Cambridge, Ohio

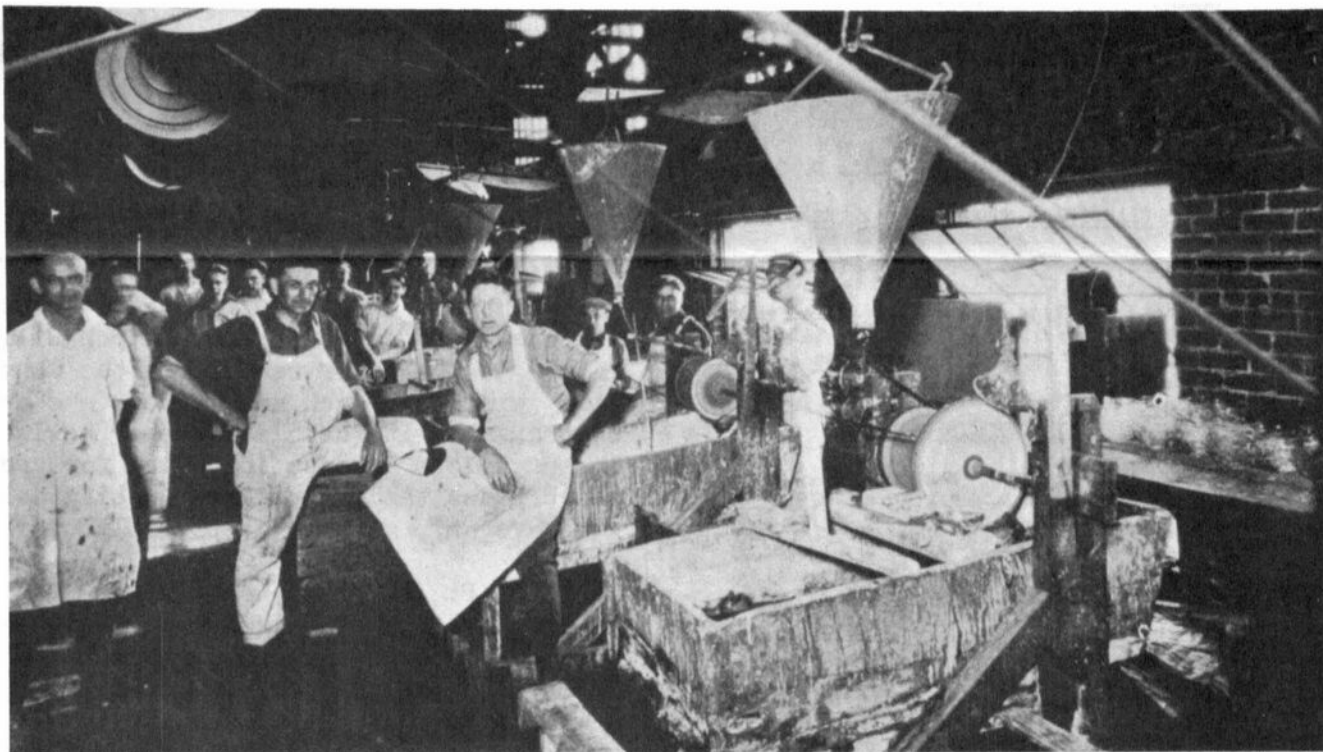


Photo circa 1924

The Cambridge Glass Co., Cambridge, Ohio

## CUTTING DEPARTMENT

Showing group of experienced cutters. Here is produced the popular Floral patterns.

Many thanks are hereby extended to our Auction Chairman Lynn Welker and his hard working committee. The Auction was a high success and it deserves the thanks and appreciation of all.

**MEMBERSHIP RENEWAL NOTICE**  
If the date on your 4 - 79  
address label is - -  
This is your LAST ISSUE of the  
**CRYSTAL BALL. Please renew NOW!**

Convention is just around the corner. Your help and support will be needed in many areas. Please direct your attention to the requests of our Display Room Committee on page 3. More Convention details next month!

*Bill*

# CAMBRIDGE CRYSTAL BALL

Official publication of National Cambridge Collectors, Inc., a non-profit corporation with tax exempt status. Published once a month for the benefit of its members. Membership is available for individual members at \$10 per year and additional members (12 years of age and residing in the same household) at \$3 ea. All members have voting rights, but only one CRYSTAL BALL will be mailed per household.

Back issues of the CRYSTAL BALL are available to members only, at a cost of 60¢ ea. or 12 issues for \$7.

## 1978-79 Officers & Committee Chairpersons

PRESIDENT \_\_\_\_\_ William C. Smith  
VICE-PRESIDENT \_\_\_\_\_ George W. Hoffman  
SECRETARY \_\_\_\_\_ Janice Y. Hughes  
TREASURER \_\_\_\_\_ Ruby Landman  
SERGEANT-AT-ARMS \_\_\_\_\_ George W. Hoffman  
BUDGET & FINANCE \_\_\_\_\_ William C. Smith  
BY-LAWS \_\_\_\_\_  
CONVENTION \_\_\_\_\_ George W. Hoffman  
MEMBERSHIP \_\_\_\_\_ Josephine A. Barstow  
MUSEUM \_\_\_\_\_ Arnold Lynd  
PROGRAM & ENTERTAINMENT - Charles A. Upton  
PROJECT \_\_\_\_\_  
PUBLICITY \_\_\_\_\_ Donald E. Armbrecht  
STUDY GROUP ADVISORY \_\_\_\_\_ Janice Y. Hughes

1979 CAMBRIDGE AUCTION \_\_\_\_\_ Lynn Welker

CRYSTAL BALL Editor \_\_\_\_\_ Phyllis D. Smith

## CLASSIFIED ADVERTISING RATES

5¢ per word \$1.00 minimum

We cannot mix type size in classified advertisements. Abbreviations and initials will count as words. Payment in full must accompany all ads.

## DISPLAY ADVERTISING RATES

	Members	Non-Members
1/8 page _____	\$ 4.00 - - -	\$ 6.00
1/4 page _____	7.00 - - -	10.00
1/2 page _____	12.00 - - -	18.00
3/4 page _____	17.00 - - -	25.00
Full page _____	22.00 - - -	33.00

## DEALERS DIRECTORY

1\* ad \_\_\_\_\_ \$6.00 for 6 months

Cambridge CRYSTAL BALL assumes no responsibility for items advertised and will not be responsible for error in price, description or other information.

Advertising copy must be in our hands by the 15th of each month to assure publication in our next issue. Advertisements containing reproductions will not knowingly be accepted unless clearly stated.

PLEASE ADDRESS ALL CORRESPONDENCE TO

Cambridge CRYSTAL BALL  
National Cambridge Collectors, Inc.  
P. O. Box #416  
Cambridge, Ohio 43725

PLEASE NOTIFY US IMMEDIATELY OF ANY CHANGE IN YOUR ADDRESS!

Please enclose a self-addressed, stamped envelope when requesting information!!

# Club News

National Cambridge Collectors, Inc.  
Quarterly Meeting  
March 2, 1979  
Holiday Inn, Cambridge, Ohio

The meeting was called to order at 8:12 PM by President Smith. In attendance were 8 Board members and 51 members and guests from 5 states. The minutes of the November 11, 1978 meeting were read by Janice Hughes and approved.

The Treasurer's report was given by Ruby Landman, showing the Museum Fund has a balance of \$35,695.97. As the books are at the Auditors, a full report will be given at the Convention.

## COMMITTEE REPORTS

BY-LAWS: No report.

CONVENTION: Chairman George Hoffman advised that the details will be in the next CRYSTAL BALL.

CRYSTAL BALL: Editor Phyllis Smith reported there was a delay at the printers so the CRYSTAL BALL for March will be late. As the color scheme for the Convention will be black and yellow, she asked that anyone with candlesticks or bowls in these colors please loan them for use on the Banquet tables. Please notify her if you have any, as soon as possible.

MEMBERSHIP: Chairman Jo Barstow reported we now have 609 \$10 members, 232 \$3 members, 5 Honorary members, for a total of 846. She announced we now have our first member from Canada.

PROJECT: President Smith reported on the delay with the Bookend Project.

PUBLICITY: Chairman Don Armbrecht asked if anyone had any suggestions for advertising to contact him.

STUDY GROUP ADVISORY: No report.

MUSEUM: In the absence of Chairman Arnold Lynd, Jo Barstow described the A. J. Bennett property and reported the committee had decided it was not suitable for a Museum.

continued on page 7

# **HELP WANTED**

## **NO EXPERIENCE NECESSARY**

The colors of Black and Gold have been selected for the color theme of this year's Convention. In keeping with this color theme, the Display Room Committee has decided to display glass in these two color categories, including the many combinations in design, etching, cutting and various decorations applied to the different shades of these colors, ie, Ebony, Ebon, Primrose, Mandarin Gold and Gold Krystol.

We feel that this will allow a larger number of our membership to participate in displaying glass and at the same time, remove some of the responsibility from those who have so willingly displayed their very rare and valuable glass in past years. With rising values and the rarity of many of the pieces, it is understandable that people have become a little more hesitant about handling and displaying some of this glass. This is not to say that there are no rare or valuable pieces in these color categories! Much to the contrary, it is our hope that those of you who have these lovely and valuable pieces in these colors will see fit to bring them for display.

Our primary aim is to have as many pieces in these color lines, as were produced by the Cambridge Glass Company. We want people who attend the Convention, whether they be novice or advanced collectors, to be able to more easily familiarize themselves with this beautiful glassware.

We would urge you to start thinking about the pieces you have that you will be willing to bring for this display. Immediately make a list of what you have and its value, and in the May issue of the CRYSTAL BALL we will insert a form letter that you may fill out and return to us for insurance purposes. This will also help us avoid duplication of effort, as we will let you know if any of your pieces are being brought by someone else. We will need this glass to be at the Display Room in the Shenandoah Inn the evening of the 21st of June, so that we may have time to arrange the display.

Also in the Display Room, we will have a separate area for everyone attending the Convention to bring their favorite piece of Cambridge glass, regardless of color, to be displayed. It doesn't have to be anything different or rare - it only needs to be SPECIAL to you! Please bring this piece with you when you Register and let's see if we can't make the number of registrations and the number of pieces of glass on this table be equal to one another.

Any of you who will be attending the Convention and would wish to serve as a Host or Hostess in the Display Room - please express this willingness at the Registration Desk. There will be a schedule there so that you may indicate the hour(s) you would care to serve.

For any questions or comments you may have, please address your correspondence to: Willard P. Kolb, P. O. Box 416, Cambridge, Ohio 43725.

YOUR DISPLAY ROOM COMMITTEE  
Willard P. Kolb, Chairman  
Norma Kolb — Jo Barstow  
Larry Hughes — Janice Hughes  
Lynn Welker



# QUARTERLY MEETING REPORT

by Phyllis Smith

"Just a little bit of Heaven right here on earth!" We've all heard the expression at one time or another, but not many of us ever get to experience the feeling.

Fifty-nine dedicated Cambridge collectors enjoyed what must have seemed like Heaven to many of them, on Friday evening, March 2nd, at the Holiday Inn in Cambridge, O. At least, the ones present who "thrill" at the very mention of a Cambridge Nude stemmed "anything", had to have been in a state of heavenly bliss.

Upwards to 100 #3011 Statuesque Line (Nude Stems) were on display in what was undoubtedly the most complete display of this Line ever exhibited at one time. No small amount of effort went into bringing this about, and those present will be forever in the debt of Program Chairman Charles Upton and his committee, for this lovely display. Each item was different in some manner, as there were no duplications.

As narrator for the evening, Lynn Welker told us just about "everything we have always wanted to know about Cambridge Nude stems, but had never had the opportunity to ask", and it was most educational.

According to Lynn, if you should decide to collect these little ladies, and you would like to have a colorful display, then it is his suggestion that you collect the cocktails. There are approximately 25 different colors to choose from in this particular shape.



If a challenge is your desire in collecting, you might want to go for the Banquet goblet. There was just one of these in attendance, and no one in the room knew of another one. Many of us confuse the Banquet goblet with the Table goblet and it is an understandable mistake, as the bowls of each are the same size, it is the Nudes that are different. The Banquet goblet is on the large  $6\frac{1}{2}$ " stem while the Table goblet is found on the  $5\frac{1}{2}$ " middle size stem.

When the question was raised concerning the price one might expect to pay for any item in this Line, a bottom figure of \$50 was suggested. This certainly proved true the next day at our Auction when prices started at a low of \$55 for an all crystal Ivy Ball and reached a high of \$120 for an amethyst Ashtray on a crystal stem.

It is impossible to repeat here all of the information presented to us during the evening, but we will try to give you a few of the more interesting facts. For instance, did you know: that the small nude with the Seashell top was originally made



for a soap dish; that Topaz is considered rare as it was made for only a short time in the 30's and did not sell well, so was discontinued; that the stems in crown tuscan are very hard to find with bowls in any color other than mandarin gold; that tops in smoke are unusual, but that smoke in crackle is RARE; that a crystal stem with ebony foot and bowl is very RARE; that Cambridge did not make an amber stem in this line, and any you see were made by Imperial; that bowls with etchings and cut patterns are hard to find; and that the bowls with Rockwell Sterling patterns are very expensive and hard to find?

If you were unable to attend this meeting, you know by now that you missed a most interesting and informative one. The next Quarterly meeting will be held during our Convention and it is hoped that many of you will be able to attend.

A brief report on the Auction can say little more than it was very successful. We had the largest crowd ever, and they all came to buy! There were close to 200 people crowded into the Auction room with "standing room" only.

Auctioneer Craig Connelly did an outstanding job of moving the 289 Lots of glassware in approximately 4-3/4 hours. The entire Auction was well organized and everything went very smoothly, thanks to the hard work of Lynn Welker, Auction Chairman, and his committee.

Be sure to check the prices listed on page 14, it is almost certain that you will be in for some pleasant surprises!



"NearCut" sold very well, especially the three carnival pieces. One lucky bidder went home with the Strawberry covered butter for only \$45.



The 3" carmen Swans brought \$155 each, and the Mt. Vernon Decanter in carmen sold for \$150. The 10 1/2" Basketweave rubina Vase brought \$190.



# Who Pinched My Decanter

by Judy Johnson  
California

Come give me a ride in your Portia  
Give me a Vintage Cordial or two  
Made with Old Fashioned Grape  
Please try not to gape  
Just try to Console me, I'm blue!

Please take me to Cambridge Circle  
That's somewhere near Cambridge Square.  
There's a Cascade flowing  
In the fountain glowing  
The Swans and the Frogs will be there.

For some one has Pinched my Decanter  
The rogue has de-Nuded my Stems  
Oh, when he gets bolder  
He'll steal my Flower Holder  
Then my Epergnes, my Urns and my gems.

The knave didn't Stimulate my Business  
(Oh, bring on that Old Fashioned Grape)  
They'll send him to Prism  
The fault will be his'n  
Ah, my little Bobeche, don't be late!

---

## we get letters

Hi, One more time, you did a fine job with your hardbound and the respective updated price guides. Congratulations.

Recently, we picked up a marked Mt. Vernon lidded box, 4" square, in Heatherbloom. Is it rare, scarce, etc.?

Later, we found a Caprice sugar that "appears" to be lavender tinted. Was Caprice made in Heatherbloom or do you think it's "purpled" naturally?

Keep up the good works. Nancy Johnson  
Oklahoma

EDITOR'S NOTE: Your Mt. Vernon cigarette box is neither scarce nor rare, but certainly very desirable. We have seen several pieces of Mt. Vernon in Heatherbloom over the years, and feel that it is absolutely gorgeous.

# Want Study Groups

Interest in Study Group membership is continuing to grow. Listed below are members interested in starting a Study Group in their area. If you share this interest, please contact the person nearest you by either phoning or writing them c/o N.C.C., P. O. Box 416, Cambridge, Ohio 43725.

CALIFORNIA - Beverley Hanson

CONNECTICUT, New England or New York area  
- Barbara Hellman

INDIANA, North Central area  
- Kenneth Cook, 219-653-2511

MICHIGAN, Burton, Flint area  
- Clara K. Brown

MARYLAND - Faith Lasher

OHIO, Ashland, Galion, Mansfield or Mt. Vernon area  
- D. D. Rummell  
Cleveland area  
- JoAnne Wegman, 216-351-0799  
Mentor Area  
- Raymond W. Pyle  
Hide-A-Way Hills area  
- Virginia Dutcher

OREGON - Joyce Dawson

VIRGINIA. Williamsburg area  
- John Grubb

### AN OPEN INVITATION

Don and Jane Rogers wish to extend an invitation to any NCC members traveling I-70 near St. Louis, MO. to stop by for a Cambridge Glass" visit. Telephone them at 314-327-8819 for directions!

---

We have seen other Caprice creamers and sugars in the lavender color you describe and have always felt that they were sun colored. However, we have no facts to prove or disprove this feeling. How do some of our other members feel about this - write and let us know.



# Club News

continued from page 2

**AUCTION:** Chairman Lynn Welker reported that due to employment changes at the Holiday Inn, food would not be available in the Auction room. He also reported on late additions to the Auction Catalog.

**ANTIQUÉ SHOW:** President Smith advised the Show contracts would be in the mail within the next week. He requested dealers return their contracts as soon as possible, as there is a waiting list.

OLD BUSINESS None.

## NEW BUSINESS

President Smith, Chairman of the Nominating Committee, reported his committee as follows: George Hoffman, Larry Hughes and Phyllis Smith. Nominated were Lynn Welker of New Concord, Ohio; Janice Hughes of Cambridge, Ohio; Ruby Landman of Ashland, Ohio; and Albert Steele of Westerville, O. Board members whose terms end in 1979 are Lynn Welker, Janice Hughes, and Ruby Landman.

President Smith asked for any nominations from the floor. A motion was made by Don Armbricht to close the nominations. Motion carried. A show of hands approved the nominations.

Mr. Richard Houston asked how the balloting was done and this was explained by President Smith.

Janice Hughes reported that Jo Barstow would be in charge of the returned ballots.

President Smith reported that on February 16, 1979, the N. C. C. Post Office Box was broken into and an undetermined amount of mail was taken. Cambridge Chief of Police Charles Moorehead reported it was under investigation.

President Smith then turned the meeting over to Charles Upton, Program Chairman. He introduced Lynn Welker who gave a very informative program on the Statuesque Line. Frank Wollenhaupt had charge of the "Show & Tell".

A motion was made by Frank Wollenhaupt to adjourn at 9:55 PM.

Janice Hughes, Secretary

# STUDY Club News

STUDY GROUP #3 — SOUTHERN FLORIDA  
"THE FLORIDA EVERGLADES"

December 18, 1978 - The Florida Everglades held their meeting in the home of Paula Marks, with ten members present.

Topics included the many different blanks used by Cambridge for their etchings, and our discussion of Cambridge colors was also continued from last month.

"Show & Tell" included two Ebony Nude stem Cocktails. After much discussion it was decided that one was Cambridge and the other had been produced by Imperial. Also on display was a Regency Wine; a Farberware Decanter in amethyst; and 6 #7966 Clarets with an unknown cutting.

January 16, 1979 - The first meeting of the new year was held in the home of Mark Nye, with nine members and one guest present.

Our topic for discussion was Caprice. We learned that this is by far one of the largest patterns made. It was also one of the longest running productions. Many of the colors Caprice was produced in were on display.

submitted by Luene Brandt

February 20, 1979 - The Florida Everglades Study Group met this month in the home of Dick and Luene Brandt, with eleven members and one guest present. Luene informed us that we are officially classed as Study Group #3, National Cambridge Collectors.

Our topic was Cleo etching and we had a large selection on display. Decagon and Round blanks, plus two stem styles were present. Unusual pieces included a Cordial, a covered vegetable Dish and a bulbous Vase with Flower Frog. There were pieces in pink, green, blue and green with gold trim. It was reported that a piece had been seen recently in royal blue with Cleo etching.

submitted by Carroll B. Mellin  
Secretary

# STUDY Club News

continued from page 7

## STUDY GROUP #5 - SOUTHERN CALIFORNIA "CALIFORNIA CAMBRIDGE COLLECTORS"

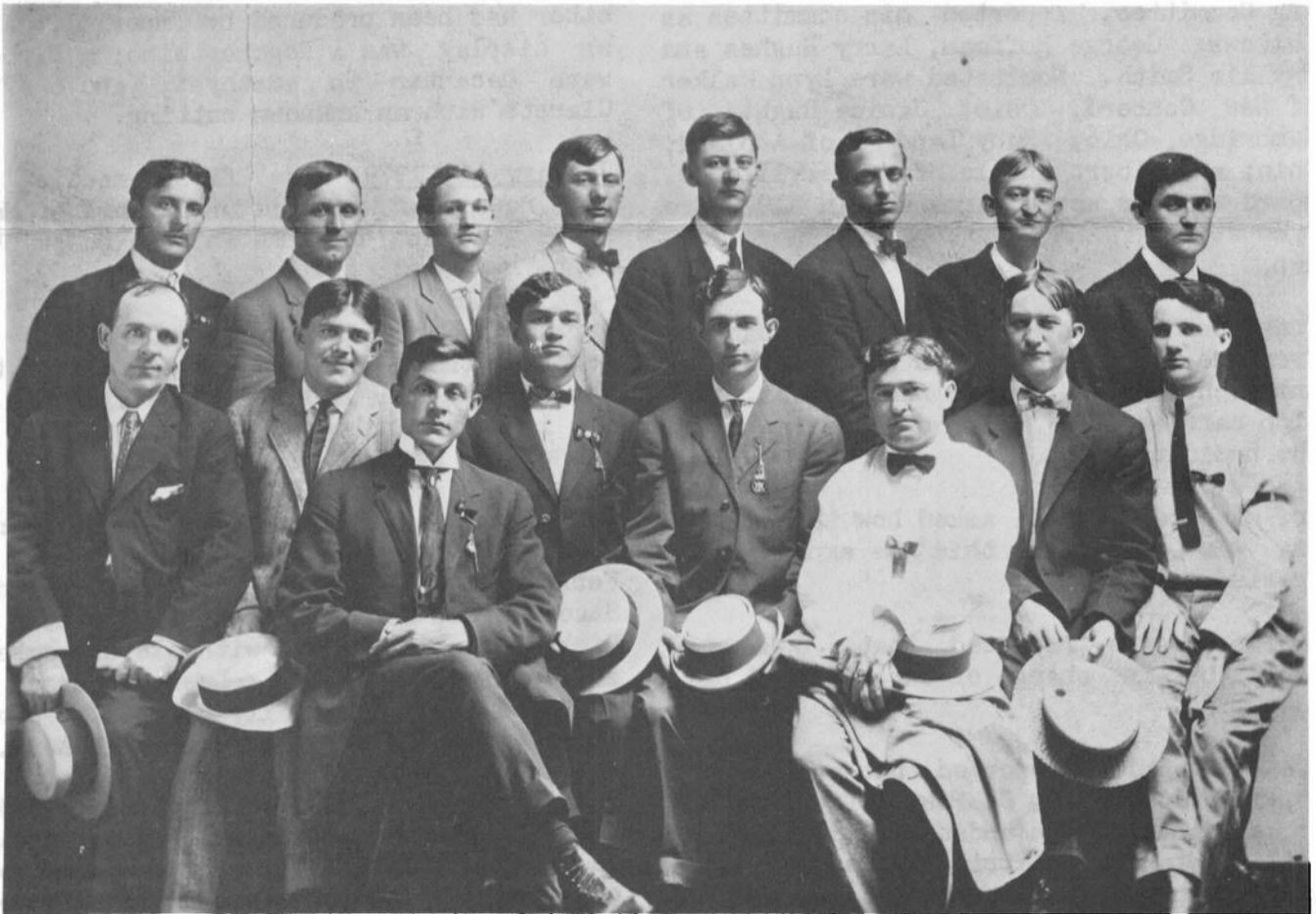
The California Cambridge Collectors met on February 16th, at the home of Betty and Herb Wanser, with 15 members and one guest present.

Betty Wanser presented a program and display on Cambridge Bar Ware. Displayed on the table among the bar items were six lovely heatherbloom #1203, 6 oz. shot glasses (some of them were signed); and two different styles of cordial Decanter sets in Farber Brothers chrome holders, complete with locks and keys.

Our monthly raffle was followed by "Show & Tell". Shared that evening was the large Buzz Saw Cologne in crystal; a #156 crystal Oyster Plate; a moonlight blue 8" Draped Lady Flower Holder on a #3 base; a Rosepoint #3400 Line Ball Jug; a ritz blue Cologne; a Rosepoint pressed foot, carmen bowl, Wine; a #3400 Line Gloria etched Candy Dish; and the last item, a 3", #1 Swan that "maybe" is heatherbloom. Much discussion followed the appearance of the Swan with comparison to known heatherbloom items.

Our next meeting will be held March 16th in the home of Joe and Linda Svehla, with Joe presenting a program on Figural Flower Holders.

submitted by Paula Ashby  
Corresponding Secretary



AMERICAN FLINT GLASSWORK DELEGATES TO CONVENTION HELD AT NEWARK, OHIO (YEAR?)

SEATED (L-R): 1. ??; 2. Bill Tracy; 3. Joe Ball (Nat'l. Officer); 4. Otha "Doc" Mosser; 5. Orrie Mosser; 6. ?? (Union Organizer); 7. Andrew Degenhart; 8. ??.  
STANDING (L-R): 1. Scottie Simon; 2. ??; 3. ??; 4. John Degenhart; 5. Charlie Degenhart; 6. Wilbur McElhaney; 7. Louis (?) Degenhart; 8. "Shooter" Brenon.  
- - - - - Photo supplied us courtesy of Tom Mosser, Cambridge, Ohio

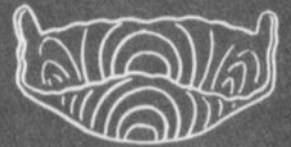




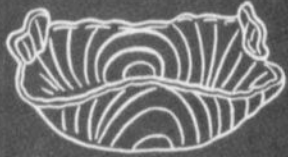
No. C-201 — ICE BUCKET WITH HANDLE AND TONGS



No. C-145 — 5" LEMON PLATE



No. C-147 4" SQUARE BONBON

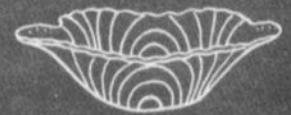


No. C-154 6" BONBON, SQUARE

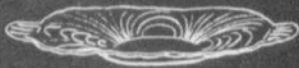
# Caprice



No. C-136 — 7" TALL COMPORT



No. C-144 — 4" JELLY



No. C-152 — 6" LEMON PLATE



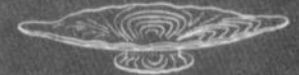
No. C-207/213 6-PIECE SMOKER SET



No. C-102 — 9" PICKLE



No. C-207 CIGARETTE BOX AND COVER



No. C-131 8" LOW FOOTED PLATE



No. C-125 12" 3-PART CELERY AND RELISH



No. C-36 — 13" CAKE PLATE



No. C-122 — 8" 3-PART RELISH



No. C-133 — 6" LOW FOOTED BONBON, SQUARE



No. C-65 — 11" OVAL BOWL



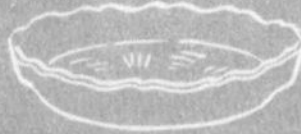
No. C-117 — 3 OZ. OIL



No. C-67 — 2 1/2" CANDLESTICK



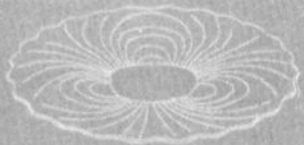
No. C-124 — 8 1/2" 3-PART  
CELERY AND RELISH TRAY



No. C-13 — 3 1/2" COASTER



No. C-37 — 6" OVAL TRAY



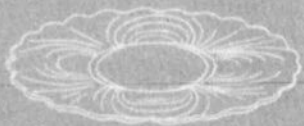
No. C-28 — 14" PLATE



No. C-183 — 80 OZ. BALL JUG



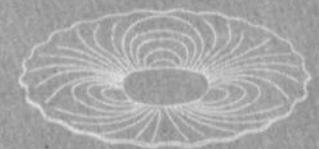
No. C-120 — 2-PART RELISH



No. C-30 — 16" PLATE



No. C-81  
11 1/2" SHALLOW BOWL



No. C-26 — 11 1/2" PLATE



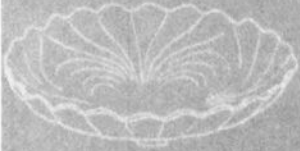
No. C-66 — 8" CANDLESTICK



No. C-129  
3-PIECE MAYONNAISE SET



No. C-62 — 12 1/2" BELLED BOWL



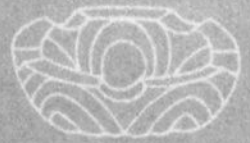
No. C-81  
13 1/2" SHALLOW BOWL



No. C-216 - 5" ASH TRAY



No. C-22 - 11" CABARET PLATE



No. C-214 - 3" ASH TRAY



No. C-23 - 14" CABARET PLATE



No. C-213  
2 1/4" ASH TRAY OR NUT CUP



No. C-67  
12 1/2" CRIMPED BOWL



No. C-215 - 8" ASH TRAY



No. C-54 - 10 1/2" BELLED BOWL



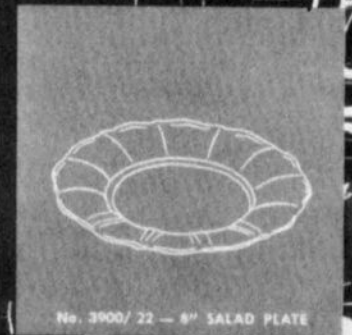
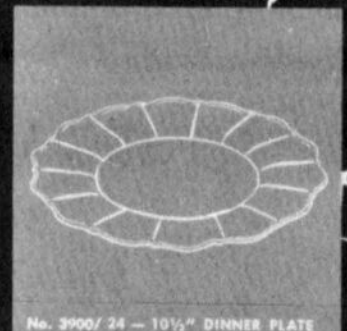
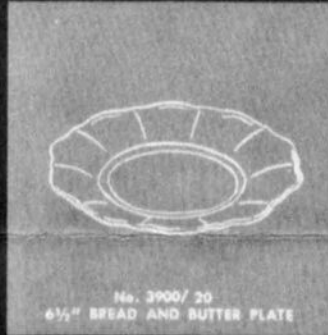
No. C-145  
CANDY BOX AND COVER

# Caprice





# Corinth



THE CAMBRIDGE GLASS COMPANY, CAMBRIDGE, OHIO, U.S.A.



# T Shirts by Brandt

AN IDEAL GIFT FOR THE CAMBRIDGE COLLECTOR  
 A YELLOW T-SHIRT WITH A BLACK CAMBRIDGE SEAL!

FIRST QUALITY — SPECIAL \$7.50 each  
 (includes postage and handling)

The T-Shirt you saw at the Cambridge  
 Convention is now available in men's and  
 women's sizes!

PHONE: 305-764-2063

ORDER NOW: Send your check or money order (\$7.50 for each shirt) to:

T-Shirts by Brandt, 1305 N. W. 1st Avenue, Fort Lauderdale, Florida 33311

Please specify size when ordering: WOMEN: sm., med., lg. MEN: med., lg., x-lg.

## GEORGE HOFFMAN, ANTIQUES

(P. O. Box 614)

129 SOUTH 4TH STREET  
 NEWARK, OHIO 43055

TELEPHONE  
 614-345-8550

- |   |          |
|---|----------|
| 1. #1321 Decanter, 28 oz., w/#7966 (4) 1 oz. Cordials, amethyst (set) -----               | \$ 55.00 |
| 2. #3400/45 Bowl, ftd., 11", carmen -----   | 45.00    |
| 3. #3400/86 Pickle, 8-3/4", 2-hdld., etched Elaine - marked -----                         | 20.00    |
| 4. #3400/38 Ball Jug, 80 oz., royal blue -----  | 45.00    |
| 5. #1239 Vase, 14", ftd., crystal -----   | 20.00    |
| 6. #3400 Salt & Pepper, ball shaped, etched Chantilly (set) -----                         | 15.00    |
| 7. #3143/39 Jug, 82 oz. w/#3143/50 (4) 13 oz. Tumblers, Gyro Optic, pistachio (set) ----- | 90.00    |
| 8. #3400/101 Jug, 76 oz., emerald green -----   | 40.00    |
| 9. #187 Decanter, 35 oz., Caprice, peachblo --  | 60.00    |
| 10. #1203 Tumbler, 8 oz., royal blue - marked -   | 15.00    |
| 11. #3900/118 Jug, 32 oz. w/#3900/118 (4) Tumblers, Gyro Optic, moonlight blue (set)-     | 45.00    |
| 12. #3400/15 Comport, small, 4", peachblo -----   | 7.00     |
| 13. #1236 Ivy Ball, 8", ftd., amber -----   | 30.00    |
| 14. #3900/19 Mayonnaise, etched Rosepoint -----   | 30.00    |
| 15. Gadroon Relish, 4-compt., etched Rosepoint-   | 45.00    |
| 16. #130 Comport, 7", low ftd., Caprice, peachblo -----                                   | 20.00    |
| 17. #3400/851 Ice Pail w/tongs, etched Rosepoint -----                                    | 75.00    |
| 18. #1236 Ivy Ball, 8", ftd., crown tuscan -----  | 52.50    |
| 19. #3500/39 Sandwich Plate, 11", ftd., etched Rosepoint -----                            | 75.00    |
- SHIPPING \$2 -- OHIO RESIDENTS ADD 4½% SALES TAX -- SASE

# OBSESSION IN DEPRESSION

THE AMERICAN DEPRESSION ERA COLLECTOR

Published for the buying, selling and trading  
 of Depression Glass.

1 year .....\$7.00  
 2 years .....\$13.00  
 CANADIAN RATES \$9.00 PER YEAR



Payable to:  
 Obsession  
 20415 Harvest Ave.  
 Lakewood, Calif. 90715

All issues of the "Obsession" will be mailed on the 25th of each month

NAME .....

ADDRESS .....

CITY ..... STATE ..... ZIP .....

# 1979 AUCTION

NATIONAL CAMBRIDGE



COLLECTORS INC.

## RESULTS

1.	30.00	
2.	15.00	ea.
3.	25.00	pr.
4.	32.50	
5.	45.00	
6.	25.00	pr.
7.	15.00	Ameth
	12.50	Green
	5.00	MGold
8.	30.00	set
9.	12.50	
10.	10.00	
11.	9.00	
12.	25.00	
13.	20.00	pr.
14.	55.00	
15.	5.00	ea.
16.	17.50	
17.	30.00	
18.	20.00	
19.	22.50	
20.	15.00	
21.	25.00	
22.	27.50	
23.	27.50	
24.	30.00	
25.	35.00	pr.
26.	45.00	
27.	22.50	set
28.	25.00	
29.	30.00	
30.	14.00	ea.
31.	21.00	(1)
	15.00	(1)
	10.00	(1)
32.	16.00	ea.
33.	8.00	
34.	10.00	
35.	18.00	
36.	15.00	
37.	35.00	
38.	11.00	
39.	15.00	
40.	16.00	ea.
41.	17.50	ea.
42.	16.00	ea.
43.	30.00	
44.	35.00	
45.	42.50	pr.
46.	10.00	
47.	60.00	
48.	75.00	
49.	10.00	(1)
	8.00	(1)
50.	7.50	
51.	12.50	
52.	22.50	set
53.	72.50	
54.	5.00	
55.	5.00	
56.	30.00	Blue
57.	15.00	
58.	9.00	
59.	17.50	
60.	8.00	ea.
61.	15.00	
62.	35.00	
63.	5.00	
64.	24.00	(2)
	98.00	(7)
65.	27.50	pr.
66.	42.50	set
67.	17.50	
68.	60.00	
69.	17.50	
70.	15.00	
71.	25.00	
72.	35.00	
73.	25.00	
74.	190.00	
75.	300.00	set
76.	52.50	
77.	55.00	
78.	35.00	
79.	5.00	
80.	100.00	set
81.	17.50	
82.	27.50	
83.	22.50	pr.
84.	27.50	pr.
85.	30.00	set
86.	10.00	
87.	20.00	
88.	15.00	ea.
89.	35.00	
90.	15.00	pr.
91.	47.50	
92.	4.00	ea.
93.	5.00	
94.	27.50	
95.	155.00	ea.
96.	20.00	
97.	2.00	
98.	35.00	
99.	21.00	
100.	26.00	
101.	25.00	
102.	17.50	pr.
103.	3.00	ea.
104.	11.00	
105.	15.00	X
106.	45.00	set
107.	15.00	X
108.	17.50	
109.	35.00	
110.	15.00	
111.	25.00	
112.	27.50	
113.	4.00	ea.
114.	30.00	
115.	20.00	
116.	8.00	
117.	3.00	
118.	20.00	
119.	15.00	
120.	45.00	
121.	22.50	
122.	25.00	
123.	12.50	X
124.	10.00	ea.
125.	32.50	
126.	50.00	
127.	60.00	
128.	15.00	X
129.	15.00	X
130.	45.00	set
131.	6.00	
132.	10.00	
133.	7.00	ea.
134.	8.00	
135.	8.00	ea.
136.	45.00	
137.	55.00	
138.	37.50	
139.	2.50	
140.	27.50	
141.	10.00	
142.	30.00	
143.	100.00	
144.	40.00	
145.	17.50	
146.	17.50	
147.	17.50	
148.	20.00	
149.	80.00	ea.
150.	33.00	
151.	330.00	set
152.	5.00	
153.	20.00	pr.
154.	3.00	ea.
155.	10.00	ea.
156.	15.00	
157.	20.00	
158.	77.50	set
159.	60.00	
160.	65.00	
161.	20.00	
162.	52.50	
163.	15.00	
164.	20.00	
165.	55.00	
166.	10.00	(1)
	15.00	(2)
	5.00	(1)
167.	12.50	
168.	22.50	
169.	150.00	
170.	15.00	ea.
171.	22.50	
172.	20.00	set
173.	10.00	
174.	35.00	
175.	6.00	(1)
	5.00	(1)
176.	20.00	
177.	7.00	
178.	3.00	ea.
179.	9.00	ea.
180.	4.00	ea.
181.	2.00	
182.	4.00	
183.	20.00	set
184.	25.00	
185.	22.50	ea.
186.	90.00	
187.	42.50	
188.	65.00	
189.	80.00	pr.
190.	15.00	pr.
191.	50.00	set
192.	17.50	set
193.	14.00	set
194.	12.50	
195.	17.50	
196.	22.50	
197.	23.00	
198.	10.00	
199.	35.00	pr.
200.	7.00	pr.
201.	36.00	(3)
	11.00	(1)
	20.00	(2)
	5.00	(1X)
202.	20.00	pr.
	(Peachblo)	
203.	30.00	
204.	5.00	
205.	30.00	
206.	20.00	
207.	35.00	
208.	60.00	
209.	12.50	
210.	15.00	set
211.	4.00	
212.	32.50	Green
213.	12.50	set
214.	11.00	X
215.	35.00	
216.	20.00	
217.	60.00	
218.	22.50	
219.	35.00	pr.
220.	11.00	
221.	27.50	ea.
222.	60.00	
223.	27.50	
224.	27.50	
225.	75.00	set
226.	45.00	(5)
	6.00	(1)
227.	25.00	
228.	160.00	
229.	17.50	
230.	27.50	set
231.	17.50	pr.
232.	17.50	pr.
233.	15.00	ea.
234.	70.00	(1)
	55.00	(1)
235.	27.50	
236.	60.00	set
237.	9.00	
238.	25.00	
239.	20.00	
240.	45.00	
241.	17.50	
242.	22.50	
243.	15.00	pr.
244.	15.00	
245.	47.50	
246.	12.50	
247.	67.50	
248.	50.00	set
249.	27.50	
250.	27.50	
251.	12.00	
252.	20.00	
253.	17.50	
254.	120.00	
255.	10.00	
256.	40.00	
257.	Not Camb.	
258.	9.00	pr.
259.	17.50	pr.
260.	16.00	set
261.	9.00	(2)
262.	9.00	(1)
	24.00	(4)
263.	27.50	
264.	14.00	pr.
265.	5.00	
266.	22.50	
267.	17.50	
268.	10.00	pr.
269.	12.50	pr.
270.	40.00	
271.	3.00	ea.
272.	8.00	
273.	11.00	
274.	20.00	
275.	10.00	
276.	12.00	(2)

### LATE ADDITIONS:

49A.	Amber tank- ard & 5 tumblers	55.00
61A.	Caprice 2 div. relish	7.00
61B.	Caprice candy basket	7.00
99A.	Pistachio nude cocktail	85.00
111A.	NearCut Feather bowl 10"	15.00
111B.	NearCut Feather deep bowl	37.50
162A.	8½" Swan lt. green	35.00 X
166A.	Mt. Vernon 3oz. tumbler, mocha	5.00
212A.	Candlelight double candlestick	17.50
214A.	Diane gold encrusted 12", 4 ftd. bowl & single ring candlesticks	75.00
215A.	Elaine 3500 cordials (2)	ea. 20.00
215B.	Lily of the Valley #3106 high goblets (2)	ea. 35.00
246A.	6" star ashtray	9.00

All items marked  
with an X were  
found to be  
damaged.



# Classified

4th Annual

## NATIONAL CAMBRIDGE COLLECTORS

# ANTIQUÉ SHOW & SALE

( & 5th Annual NCG Convention )

SHENANDOAH INN

INTERSTATE 70 · EXIT 186 · 7 MILES EAST OF  
CAMBRIDGE, OHIO

**JUNE 22, 23, 24, 1979**

### HOURS

FRIDAY, JUNE 22nd	6:00 - 9:00
(PREVIEW ADMISSION \$3.50)	
SATURDAY, JUNE 23rd	11:00 - 6:00
SUNDAY, JUNE 24th	12:00 - 6:00
(ADMISSION \$1.75)	

OFFERING CAMBRIDGE AND OTHER FINE GLASSWARE  
ALONG WITH A GENERAL LINE OF ANTIQUES

**FOOD                  DOOR PRIZES                  PARKING**

WANTED: Unusual CAMBRIDGE CAPRICE pieces in crystal, blue, pistachio, cobalt, amber, amethyst, ruby, amberina, forest green, smoke, teal blue, yellow, mandarin gold, and Alpine pieces in the above colors. E. A. Vimmer, P. O. Box 235, Westchester, Illinois 60153.

WANTED: From 1903 CAMBRIDGE CATALOG (Bennett's). Items from following NEARCUT Patterns: #2500; #2501; #2502; #2503; #2504; #2510 (pg. 28, besides items pictured want also Pitcher, Tumblers, Cake Stand, Bowls, etc. in both blue and clear); and #2589. Write: Deen A. Warren, c/o Cat's Meow, Box 27001, Diamond Sta., Oakland, Calif. 94602 or call 415-531-5197.

FOR SALE: 265 pieces CAMBRIDGE GLASS. Complete set of Rosepoint, including RARE Punch Bowl and many extra pieces. Mrs. Joseph Kasper, 121 N. 12th St., Byesville, Ohio 43723. Phone: 614-432-3547.

FOR SALE: ROYAL BLUE Sugar and Creamer, 3400 Line. Best Offer! J. Husband, 317 Hancock St., Braintree, Mass. 02184.

MAIL BID: #1352 Green FROG PITCHER (ref: NCC 30-34, pg. 33-20). Bids must be in by April 15th. Harry Bolon, R. R. #2, Cambridge, Ohio 43725. Phone: 614-432-3635.

*"Tact is the unsaid part of what you think; its opposite, the unthought part which you say." HENRY VAN DYKE*

This

Ad

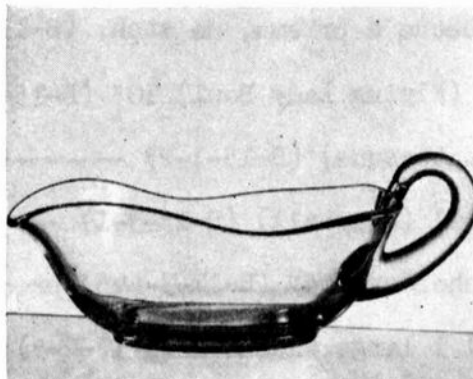
sent

us

from

EDITH

Gracefully shaped gravy/sauce boat in clear crystal has simple lines to coordinate with formal and informal settings. Cambridge Glass, Cambridge, O.



ZIMMERMAN

CROCKERY & GLASS JOURNAL for June, 1957

# ESTHER WRIGHT

## MAIL

P. O. Box #361  
9200 Charlotte Highway  
Portland, Michigan 48875

## BID

CAMBRIDGE CRYSTAL CAPRICE  
(98 pieces)

Goblets, 7-3/4" (10)  
Sherbets, 5-3/4" (10)  
Cordials (?) 4-3/4" (2)  
Bowl, 4 1/2" x 4 1/2" x 2"  
Mayo Set (tray, 5" x 2-3/4" bowl, spoon)  
Bowls, 7", flared, fluted edges, ftd. (3)  
Bowl, 10 1/2", 4 ftd., flat  
Plates, 8 1/2" (12)  
#42, 3-pc., Sugar, Cream and Tray  
#130, Compote, 6"  
#124, 3 compartment Relish/Celery, 8 1/2"  
#170, 6 1/2" Club shape  
#172, 6 1/2" Spade shape  
Plate, 15", 3 ftd.  
Dish, 8", flat, ftd., w/Silver overlay  
#67, 2 1/2", low Candlesticks (pair)  
#639, Cambridge Arms Candlesticks (pair)  
#70, 7" Candlesticks w/prisms (pair)

Glasses, 6" thin, short stem (4)  
Glasses, 6" thin, footed (4)  
Wine, (?) 5 1/4" (1)  
Flat Tray, 6 1/2" x 5"  
#120, 6 1/2" 2 compartment Relish  
#100, Oil (stopper damaged)  
#183, Jug, 80 oz.  
#17 Cups & Saucers (12)  
#4, Cream and Sugar (2 sets)  
#122, 3 compartment Relish, 8"  
Bowl, 13" x 8 1/2", 4 ftd., deep  
#171, 6 1/2" Diamond shape  
Bowl, 7", ftd., deep  
Plates, 12", flat, 3 ftd. (2)  
Bowl, 13"  
Bowl, 5 1/2"  
#1537B Peg Nappies for Arms (2)  
#1563, 4 Candle Arms (pair)

Bids on the entire lot are preferred, but others will be considered. Will include 4 Rosepoint Wines (?) FREE to party taking all! This is a collection of forty years, and the right to reject any or all unreasonable bids is hereby reserved.

POSTAGE AND INSURANCE EXTRA! Please enclose SASE for check return and notification of outcome. All pieces are in MINT condition. ----- BIDS WILL CLOSE APRIL 20, 1979!

## A. SPRINGBORN

2382 Warwick Road, Melbourne, Florida 32935

Phone 305-254-7439

ALL ITEMS ARE CROWN TUSCAN

1. Urn, 11", gold encrusted Rosepoint etching (B-24-1-2) ----- \$ 200.00
2. Urn, 11", gold and floral decoration (B-9-1-2) ----- 175.00
3. Figure Candlesticks, 9", gold stippled (B-9-2-1&3) pr. ----- 175.00
4. Figure Candelabrum w/bobeche & prisms, no etch. (B-13-3-4&5) pr.----- 195.00
5. Flower or Fruit Center (Flying Lady Bowl) 10" (B-15-2-3) ----- 150.00
6. Figure Ashtray, 6 1/2" (Statuesque) (B-15-1-2) ----- 95.00
7. 4" ftd. Candleholder Bowl (Seashell) (B-15-3-1) ----- 90.00
8. Two-lite Dolphin Candleholders, 5" (B-17-3-4&5) pr. ----- 100.00
9. Cosmetic Jars (Yardley) 1 large, 1 small (B-17-2-5) pr. ----- 20.00

SATISFACTION GUARANTEED - POSTAGE AND INSURANCE EXTRA!

# DEALERS



# DIRECTORY

<p>ANTIQUE ALLEY 24815 Broadway Bedford, Ohio 44146 216-232-7739 ---- Marie Spagnola CAMBRIDGE GLASS ROYAL DOULTON</p>	<p>BENICIA ANTIQUE SHOP 305 First Street Benicia, California 94510 OPEN 11 AM - 5 PM Closed Monday</p>	<p>CHARLES MIKULIK Box 416 Elizabeth, N. J. 07207 Phone 201-372-1101 BY APPOINTMENT ONLY!</p>
<p>CHURCH STREET ANTIQUES 6 Church Street Boston, Massachusetts 02116 George or Frank --- 617-426-1048 CAMBRIDGE, HEISEY, GENERAL LINE</p>	<p>Z. E. LOPES - 707-745-0978 VISIT HISTORIC BENICIA and its 28 shops Off Interstate #80 ----- ----- North of San Francisco</p>	<p>Always buying CAMBRIDGE BLUE CAPRICE in blown or unusual pieces only.  CARRY MOST TYPES OF ANTIQUES</p>
<p>D &amp; D ANTIQUES 184 East Kossuth Street (GERMAN VILLAGE) Columbus, Ohio 43206 DICK SLIFKO ----- 614-443-6020</p>	<p>GREEN ACRES FARM 2678 State Route 310 North Pataskala, Ohio, 43062 Sat. &amp; Sun. 1-6 PM ---- W. Bryan CAMBRIDGE &amp; HEISEY - 614-927-1882</p>	<p>FINDER'S KEEPER'S ANTIQUES P.O. Box 303 P.O. Box 16023 Dayton, O. Columbus, O. 45401 43216 513-254-2937 614-965-1906 SPECIALIZING IN CAMBRIDGE GLASS!</p>
<p>SWISS HILLS COLLECTIBLES Mary &amp; Wilbur Henderson 303 Guilford Avenue Woodsfield, Ohio 43793 Mail &amp; Shows -- 614-472-1133 SPECIALIZING IN CAMBRIDGE GLASS!</p>	<p>THE MOUSE HOUSE ANTIQUES Route 22 East Cambridge, Ohio 43725 Shirlee Bistor --- 614-432-3132 SPECIALIZING IN GLASSWARE!</p>	<p>HOBBY HOUSE ANTIQUES Rt. #1, Cambridge, Ohio - 43725 614-432-6971 -- Lena Barnes Take Rt. #209 W. From Cambridge To RT. #658 - NORTH 1½ MILES</p>
<p>THIS 'N' THAT PLACE 101 South Street Chagrin Falls, Ohio -- 44022 Lue Koerper ----- 216-247-4938 OPEN THURS.-SAT. -- 10 AM - 5 PM</p>	<p>GEORGE HOFFMAN ANTIQUES 129 South 4th Street Newark, Ohio 43055 --- 614-345-8550 ---</p>	<p>D'MARIE'S ANTIQUES US Rt. 1 - just South of Rt. 606 Thornburg, Virginia 22565 703-582-6220 ----- Jim Rankin OPEN EVERY DAY 10 AM to 6 PM</p>
<p>'OUR GLASS ANTIQUES Box 27, Wills Point, Tex. 75169 20th CENTURY COLLECTIBLES fea- turing CAMBRIDGE GLASS! Shows- No Lists - SASE Please - PAUL &amp; GINNY HENDERSON -- 214-563-6971</p>	<p>OLD TOLL GATE ANTIQUES 600 North Avenue Milan, Illinois 61264 SPECIALIZING IN HAVILAND CHINA MATCHING SERVICE</p>	<p>OLDE TOWNE ANTIQUES 307 W. St. Louis Street Lebanon, Illinois 62254 Edith Zimmerman -- 618-537-4567 GENERAL LINE ANTIQUES</p>
<p>YOU CAN ADVERTISE YOUR ANTIQUe SHOP HERE! 1 inch - \$6 for six months</p>	<p>Use Schlegers book numbers or send saucer for pattern match. SASE APPRECIATED Marie Baker ----- 309-787-2392 GENERAL LINE OF ANTIQUES</p>	<p>YOU CAN ADVERTISE YOUR ANTIQUe SHOP HERE! 1 inch - \$6 for six months</p>
<p>1886 HOUSE East Schodack, N. Y. 12063 MAIL and SHOWS Laurie Cruise - 518-477-5895 CAMBRIDGE-NORITAKE-AZALEA-D.G.</p>	<p>THE GLASS CUPBOARD 39 Shire Oaks Drive Pittsford, New York 14534 Marcia Ellis 716-586-7596 CAMBRIDGE ONLY --- SASE FOR LIST</p>	<p>M &amp; M ANTIQUES &amp; COLLECTIBLES 310 N. Main - Box 417 Canton, Kansas 67428 The Martin's ----- 316-628-4705 SPECIALIZING IN CAMBRIDGE GLASS!</p>
<p>YOU CAN ADVERTISE YOUR ANTIQUe SHOP HERE! 1 inch - \$6 for six months</p>	<p>EVELYN M. ALLEN 135 Cynthia Street Heath, Ohio 43055 Mail Order &amp; Shows 614-522-1635 SPECIALIZING IN CAMBRIDGE GLASS!</p>	<p>YOU CAN ADVERTISE YOUR ANTIQUe SHOP HERE! 1 inch - \$6 for six months</p>



12th ANNUAL  
CAMBRIDGE, OHIO

# Antique Show and Sale

APR 28 10:00 A.M. - 9:00 P.M.

APR 29 NOON - 6:00 P.M.

NATIONAL GUARD ARMORY  
N. 10th ST. - McFARLAND DR.

A QUALITY SHOW WITH QUALITY DEALERS

FOOD BY SILVER COURT OF THE AMARANTH

CHARLES UPTON - MANAGER

R.F.D. 5 CAMBRIDGE, OHIO 43725

PH - 614 - 439 1983

INFORMATION ON THE

1979 CONVENTION

WILL BE IN NEXT  
MONTH'S "CRYSTAL BALL"

WATCH FOR IT!!

SEE PAGE 14 FOR

## 1979 AUCTION

NATIONAL CAMBRIDGE



COLLECTORS INC.

### RESULTS

National Cambridge Collectors, Inc.  
Post Office Box 416  
Cambridge, Ohio 43725

FIRST-CLASS MAIL  
U.S. POSTAGE  
**PAID**  
So. Vienna, Ohio  
45369  
Permit No. 15

**FIRST CLASS MAIL**