

Cambridge



Crystal Ball

ISSUE NO. 69

JANUARY 1979

Published monthly by the National Cambridge Collectors, Inc.
To encourage and to report the discovery of the elegant and boundless product
of the Cambridge Glass Company, Cambridge, Ohio



Packing Room, a very important department, done only by those of long experience. Very few breakage complaints are received, which testifies to their ability.

MEMBERSHIP RENEWAL NOTICE
If the date on your 1 - 79
address label is - -
This is your LAST ISSUE of the
CRYSTAL BALL. Please renew NOW!

with best wishes for
a very *Happy New Year*
Bill

CAMBRIDGE CRYSTAL BALL

Official publication of National Cambridge Collectors, Inc., a non-profit corporation with tax exempt status. Published once a month for the benefit of its members. Membership is available for individual members at \$10 per year and additional members (12 years of age and residing in the same household) at \$3 ea. All members have voting rights, but only one CRYSTAL BALL will be mailed per household.

Back issues of the CRYSTAL BALL are available to members only, at a cost of 60¢ ea. or 12 issues for \$7.

1978-79 Officers & Committee Chairpersons

PRESIDENT _____ William C. Smith
VICE-PRESIDENT _____ George W. Hoffman
SECRETARY _____ Janice Y. Hughes
TREASURER _____ Ruby Landman
SERGEANT-AT-ARMS _____ George W. Hoffman
BUDGET & FINANCE _____ William C. Smith
BY-LAWS _____
CONVENTION _____ George W. Hoffman
MEMBERSHIP _____ Josephine A. Barstow
MUSEUM _____ Arnold Lynd
PROGRAM & ENTERTAINMENT - Charles A. Upton
PROJECT _____
PUBLICITY _____ Donald E. Armbrecht
STUDY GROUP ADVISORY _____ Janice Y. Hughes

1979 CAMBRIDGE AUCTION _____ Lynn Welker

CRYSTAL BALL Editor _____ Phyllis D. Smith

CLASSIFIED ADVERTISING RATES

5¢ per word \$1.00 minimum

We cannot mix type size in classified advertisements. Abbreviations and initials will count as words. Payment in full must accompany all ads.

DISPLAY ADVERTISING RATES

	Members	Non-Members
1/8 page _____	\$ 4.00 - - -	\$ 6.00
1/4 page _____	7.00 - - -	10.00
1/2 page _____	12.00 - - -	18.00
3/4 page _____	17.00 - - -	25.00
Full page _____	22.00 - - -	33.00

DEALERS DIRECTORY

1" ad _____ \$6.00 for 6 months

Cambridge CRYSTAL BALL assumes no responsibility for items advertised and will not be responsible for error in price, description or other information.

Advertising copy must be in our hands by the 15th of each month to assure publication in our next issue. Advertisements containing reproductions will not knowingly be accepted unless clearly stated.

PLEASE ADDRESS ALL CORRESPONDENCE TO

Cambridge CRYSTAL BALL
National Cambridge Collectors, Inc.
P. O. Box #416
Cambridge, Ohio 43725

PLEASE NOTIFY US IMMEDIATELY OF ANY CHANGE IN YOUR ADDRESS!

Please enclose a self-addressed, stamped envelope when requesting information!!

STUDY Club News

STUDY GROUP #2 - CAMBRIDGE, OHIO

The Cambridge Squares Study Group met in the home of Lena Barnes on November 26th. There were six members and three guests present.

The topic for discussion was Paperweights, with 24 different styles and designs on display. Two were of the Cambridge Glass factory, three cartoons, one Masonic, one Centennial marked 1803-1953, one Centennial marked 1898-1948, one of the Deep Cut School marked 1843-1931, and several with names.

"Show & Tell" items included a Mt. Vernon lamp; moonlight blue puff box with Gloria etching; an ebony hat; a powder horn; a crystal Georgian Ivy Ball; Weatherford dessert dishes; miniature Buzz Saw sugar, creamer and covered butter; and a #3400 Line frosted Ball decanter and barrel glasses with "Just a Swallow" written on them in silver overlay.

Mrs. Barnes also displayed a stool that was used in the etching department at the Cambridge Glass factory.

We are sorry to report that Roy and Doris Isaacs are leaving the Study Group and are moving to California soon. We wish them well and our "Thanks" for all their assistance. We are pleased to have two new members, Dale and Joan Snode of Cambridge.

The next meeting will be in January at the home of Charles and Marybelle Moorehead.

Submitted by Janice Hughes
Secretary

STUDY GROUP #4 - CLEVELAND, OHIO

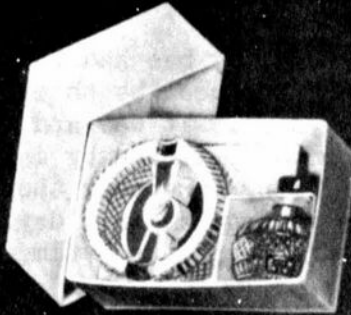
The Cambridge Arms Study Group met in the home of Bob and Lynette Frederick on November 16th. There were five members present.

Meeting dates were discussed and it was

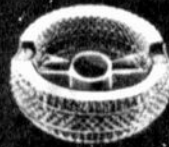
continued on page 6



SMOKERS ITEMS



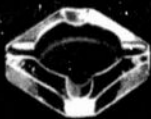
1625/1624—2 pc. Cigarette Lighter Set
(in Display Box)



1624—3½ in. Ash Tray



1626/722—2 pc. Cigarette Lighter Set
(in Display Box)



P. 721—2½ in.
Ash Tray



1626
Cigarette Lighter



P. 721—2½ in.
Ash Tray

1626/721—3 pc. Lighter Set
(Packed in Display Box)



1456—2½ in.
Ash Tray



1625
Cigarette Lighter



1456—2½ in.
Ash Tray

1625/1456—3 pc. Lighter Set
(Packed in Display Box)



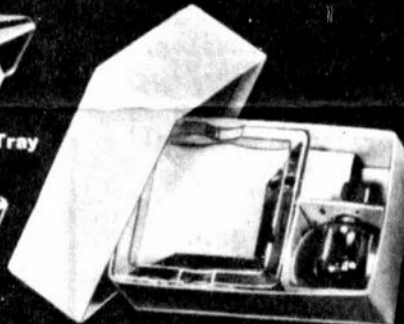
P. 731—6½ in. Star Ash Tray



P. 726—5 in. Star Ash Tray



P. 727—4 in.
Star Ash Tray



1626/725—2 pc. Cigarette Lighter Set
(in Display Box)



P. 722—3½ in. Ash Tray



P. 725—3½ in. Ash Tray



P. 729—4 in. Ash Tray



P. 724 Ash Tray
2½ x 3½ in.



1720—3 in.
Ash Tray



1721—4 in.
Ash Tray



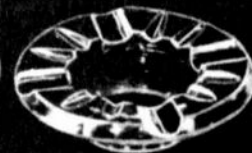
P. 730—6 in. Ash Tray



643—2 pc. Ash Receiver



643—2 pc. Ash Receiver (showing parts)



BOOKS FOR SALE

All of the available reference books relating to Cambridge glass can be ordered directly from the Club.

Address your orders for any of the following to:

BOOKS
National Cambridge Collectors, Inc.
P. O. Box 416
Cambridge, Ohio 43725

Please add \$1.00 (P & I) on each book order.
(Not required for Price List only orders)

Ohio residents please add 4½% State Sales Tax.

by National Cambridge Collectors, Inc.

1949 - 1953 CAMBRIDGE GLASS CO. CATALOG REPRINT
(300 page reprint of original catalog)
Hardbound with Price Guide \$14.95

1930 - 1934 CAMBRIDGE GLASS CO. CATALOG REPRINT
(250 page reprint of original catalog)
Hardbound with Price Guide \$14.95

1978 PRICE GUIDE
for 1930-1934 catalog reprint \$2.00

by Mary, Lyle, and Lynn Welker

CAMBRIDGE GLASS CO.
(120 pages of reprint from 8 old catalogs) \$6.95

CAMBRIDGE GLASS CO. BOOK II
(119 pages of reprint from old catalogs) \$6.95

CAMBRIDGE, OHIO GLASS IN COLOR II
(15 color plates w/ descriptions and notes) \$5.95

by Harold and Judy Bennett

THE CAMBRIDGE GLASS BOOK
(96 pages with 59 color plates)
Paperback \$7.95

1903 CAMBRIDGE GLASS CO. CATALOG REPRINT
(106 page reprint of an original catalog) \$7.50

by Charles and Mary Alice Upton

1979 PRICE GUIDE to the CAMBRIDGE GLASS BOOK
(Prices for each item in Bennett book) \$2.00

Whimsies

by Phyllis Smith

Every glass company has had their share of "whimsies" produced by their employees over the years. It was and probably still is a common practice by many to do this sort of thing whenever there was a slack period during the work day. Many workers used their lunch time in this manner.

It isn't very hard to find a "whimsy" as they are available at almost every Show or Flea Market. But, finding one that can be credited as having been made at a particular glass company is another thing entirely.

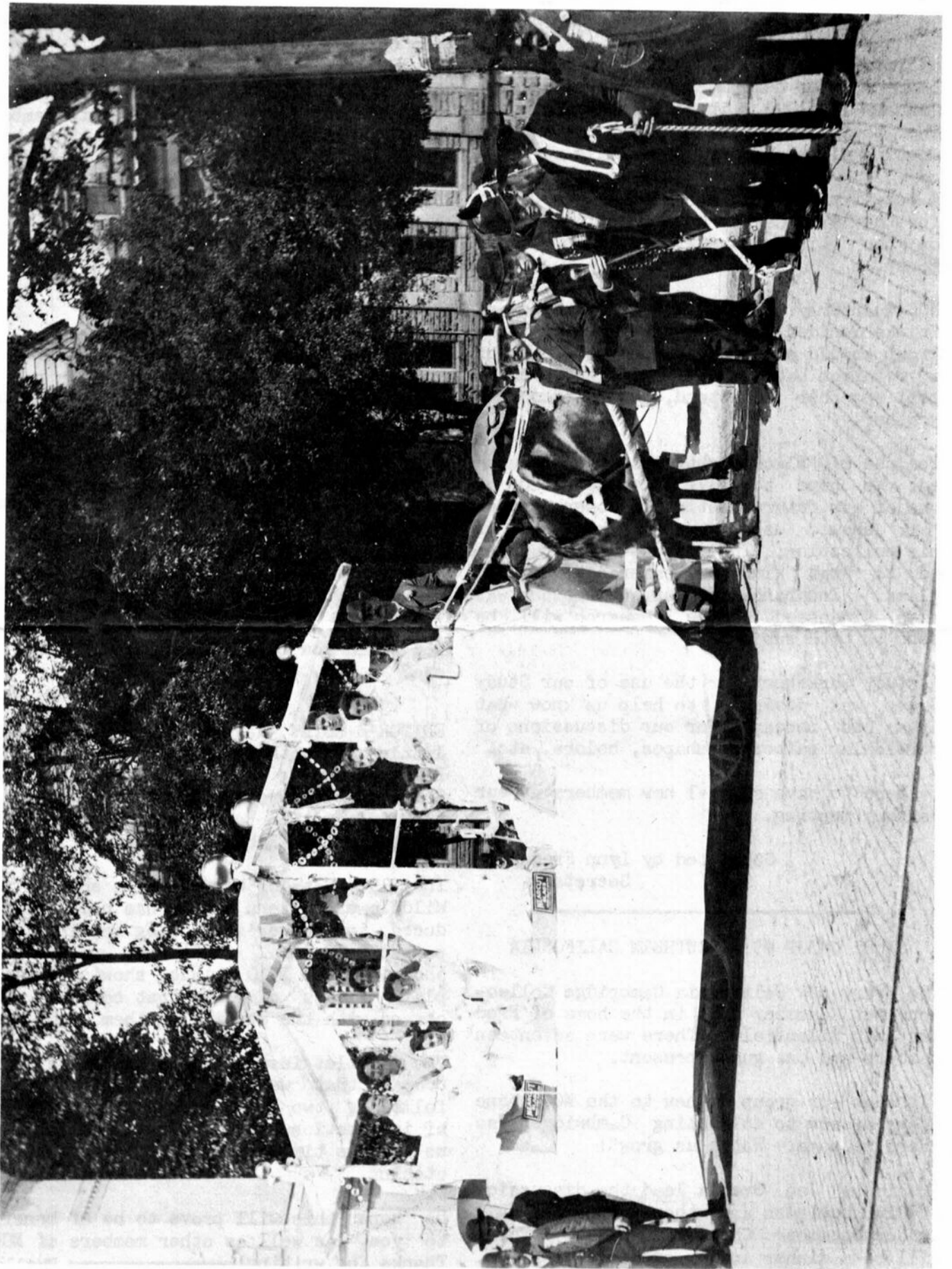
Chester and Naomi Gamble (shown in photo below) from Cuyahoga Falls, Ohio, are more fortunate than most of us, since they have not only found a Cambridge Glass whimsy, but at the same time they acquired a photograph that gives proof positive as to its place of manufacture. (please see photo on next page)

Naomi is holding in her hands the very same cane that is being held by the gentleman on the far right side of the picture. The back of the photo contains a handwritten inscription that reads as follows: "This is the Float that won prize in Labor Day Parade - Cambridge Glass Company - September 8, 1906 - Rachel". Rachel is the name of one of the ladies on the float and was also the mother of the man from whom the Gamble's purchased both the cane and the photo.

Be sure to note the "NEARCUT" signs on the floor of the float and the glass chains adorning the roof supports.



CHESTER AND NAOMI GAMBLE



STUDY Club News

continued from page 2

decided there would be no meeting in December. The next meeting will be held on January 18, 1979, in the Frederick home. The topic to be discussed at the January meeting will be Cambridge animals.

A tentative schedule of meetings was set up for the 1979 year. Meetings will be held on the third Thursday of almost every month.

NCC Quarterly Meetings were discussed and it was decided that someone from our Study Group should attend every one. Perhaps on a rotation basis or perhaps a group could get together to attend, depending on the weather.

The use of "Black Light" was then discussed. We hope to have a demonstration at one of our future meetings. Joseph Andrejcek showed us pictures he had taken of his collection. The discussion then turned to what kind of cameras to use for glass. Insurance for our collections was also discussed. Some research will be done on both subjects.

A study worksheet for the use of our Study Group was designed to help us know what areas to research for our discussions of particular patterns, shapes, colors, etc.

We hope to have several new members at our January meeting.

Submitted by Lynn Frederick
Secretary

STUDY GROUP #5 - SOUTHERN CALIFORNIA

The very new California Cambridge Collectors met November 24th in the home of Fred and Ruth Eilenfield. There were seventeen members and one guest present.

Although our group is new to the NCC, none of us is new to collecting Cambridge, so "Here we come - Watch us grow"!

President Joe Svehla lead the discussion of Club business and then turned the talk to our December Christmas Party. There will be a dinner and an exchange of gifts.

The members are still deciding on their future study projects with some signing for their favorite that evening.

All pressing Club business finished, we then had our "Show and Tell", with members talking about their "finds". Shown and discussed that evening were: a pink Melon Boy; a forrest green Flying Nude; a carmen Torchier; an amber, royal blue and emerald green Cordial decanter set in a Farber-Brothers chrome holder with lock and key; a 4" footed crown tuscan Ashtray; and an 8" crown tuscan Swan with gold trim.

We closed the evening with refreshments and lots of glass talk.

Submitted by Paula Ashby
Corresponding Secretary

we get letters

Would you tell me if the "Crystal Ball" has ever featured the "Wildflower" pattern? If so which edition was it in? If not would you consider it for a future issue?

Zane Bourisseau, Ohio

EDITOR'S NOTE: Regretfully there has been little or nothing printed in the CRYSTAL BALL concerning the "Wildflower" etching. The principal reason being that very little information concerning this pattern has become available to NCC.

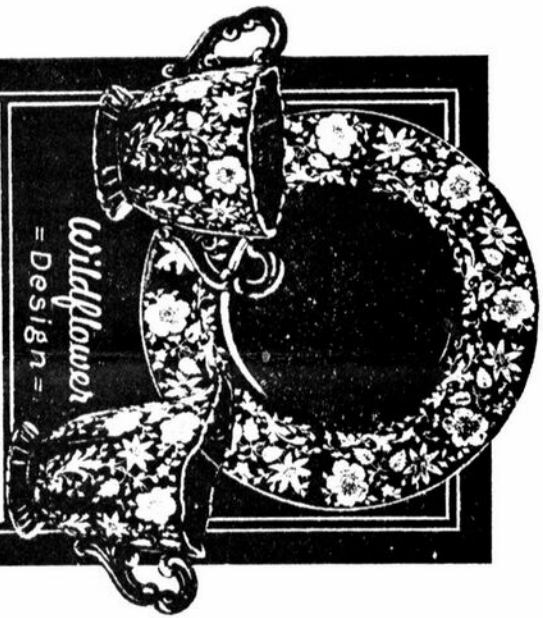
The 1940 Catalog has one page showing the Wildflower pattern and it has been reproduced in Welker's Catalog Reprint I, on page 57. Several additional pages are shown in the 1940 Catalog showing various plain pieces of glass that could be purchased with the etching on them.

The pamphlet issued by the Cambridge Glass Company that we are reproducing on the following two pages is the only other bit of information that we have available to us at this time concerning this beautiful etching.

Do hope this will prove to be of benefit to you, as well as other members of NCC. Thanks for writing _____ Phyllis



Three piece Table Center
in "Wildflower"



Wildflower
= Design =

WILDFLOWER is the name given to this beautiful new etching created by The Cambridge Glass Company.

In its modern treatment the graceful "Wildflower" offers a theme for the most fastidious and unique table decoration.

Wildflower represents a new treatment in etching. The stems, leaves and flowers with the satin background give a very pleasing and delightful effect.

This pattern will be available in open stock for many years affording opportunity for addition and replacement.

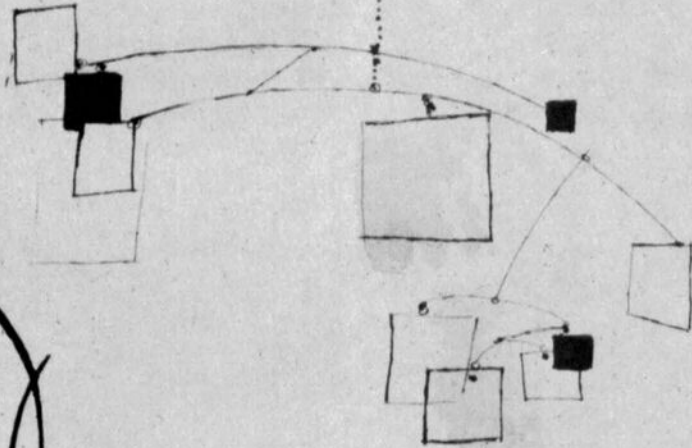
The Cambridge Glass Company
Cambridge, Ohio





THE CAMBRIDGE GLASS COMPANY, CAMBRIDGE, OHIO, U.S.A.

Cambridge



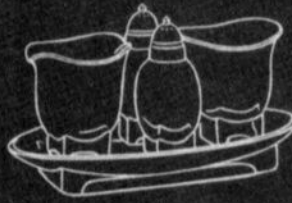
Square



No. 3797/29
4-PIECE BUFFET SET



No. 3797/69
2 LITE CANDLESTICK



No. 3797/105
5-PIECE CONDIMENT SET



No. 3797/24
9 1/2" TIDBIT PLATE



No. 3797/100 — 4 1/2 OZ. OIL



No. 3797/103 — 11" CELERY



No. 3797/104
4-PIECE CONDIMENT SET



No. 3797/81
10" SHALLOW BOWL



THE CAMBRIDGE GLASS COMPANY, CAMBRIDGE, OHIO, U. S. A.



No. 3797/495
3 1/4" SQUARE CANDLESTICK



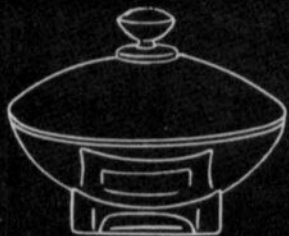
No. 3797/493
2 3/4" SQUARE CANDLESTICK



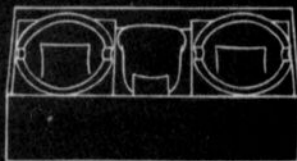
No. 3797/492
1 3/4" SQUARE CANDLESTICK



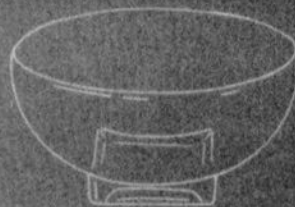
No. 3797/164 - 7" BONBON



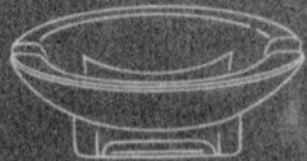
No. 3797/165
CANDY BOX AND COVER



No. 3797/152
3-PIECE SMOKER SET



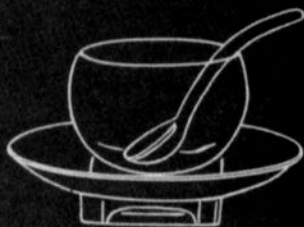
No. 3797/476
11 1/4" PUNCH BOWL



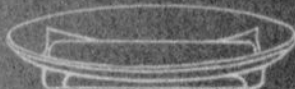
No. 3797/130 - 6 1/4" ASH TRAY



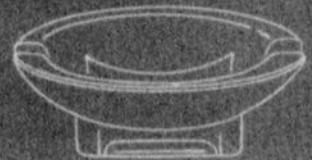
No. 3797/82
12" SHALLOW BOWL



No. 3797/129
3-PIECE MAYONNAISE SET



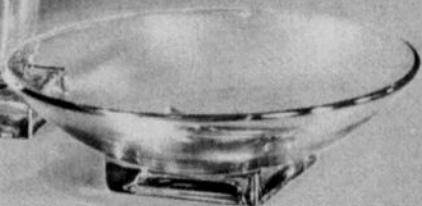
No. 3797/37 - 8" OVAL TRAY



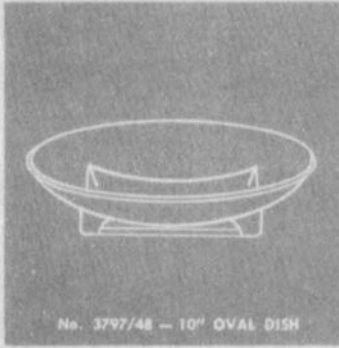
No. 3797/151 - 3 1/2" ASH TRAY



No. 3797/78
9 1/2" FOOTED VASE



No. 3797/57
11" SALAD BOWL



No. 3797/48 — 10" OVAL DISH



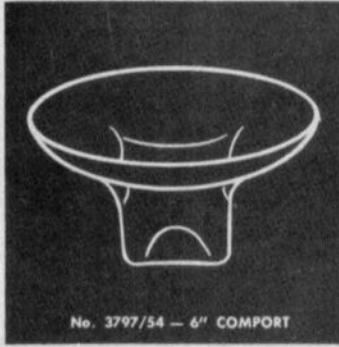
No. 3797/49 — 9" SALAD BOWL



No. 3797/15
TEA CUP AND SAUCER



No. 3797/16 — 4 1/2" DESSERT



No. 3797/54 — 6" COMPORT



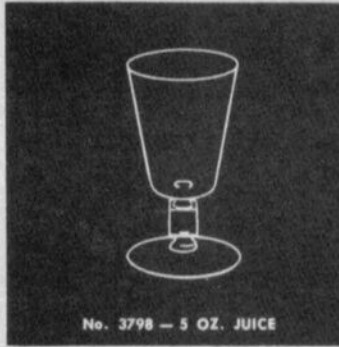
No. 3797/57
11" SALAD BOWL



No. 3797/17
COFFEE CUP AND SAUCER



No. 3797/18 — COCKTAIL ICER



No. 3798 — 5 OZ. JUICE



No. 3798 — WINE

Cambridge Square



THE CAMBRIDGE GLASS COMPANY, CAMBRIDGE, OHIO, U. S. A.

WHAT ARE YOU LOOKING FOR?

WATCH FOBBS

CLOCKS

POCKET WATCHES

RELIGIOUS MEDALS

FOUNTAIN PENS

MEDALS & BADGES

SHAVING MUGS

EARLY SAFETY RAZORS

FANCY STRAIGHT RAZORS

OILS & PRINTS

PEN KNIVES

MEASURING INSTRUMENTS

WOODEN & MECHANICAL PENCILS

OLD KEYS

SHOE HORNS

WORLD'S FAIR ITEMS

BUTTON HOOKS

ICE PICKS

OLD CRYSTAL

SILVER & STERLING

LADIES COMPACTS

OLD JEWELRY

CANES

PAPER MEMORABILIA

DEPRESSION GLASS

WAR RELICS

----- EACH IS A SEPARATE COLLECTION -----

WILL TRADE ANY PART OF - OR ALL THESE COLLECTIONS FOR:

CAMBRIDGE - BLUE CAPRICE

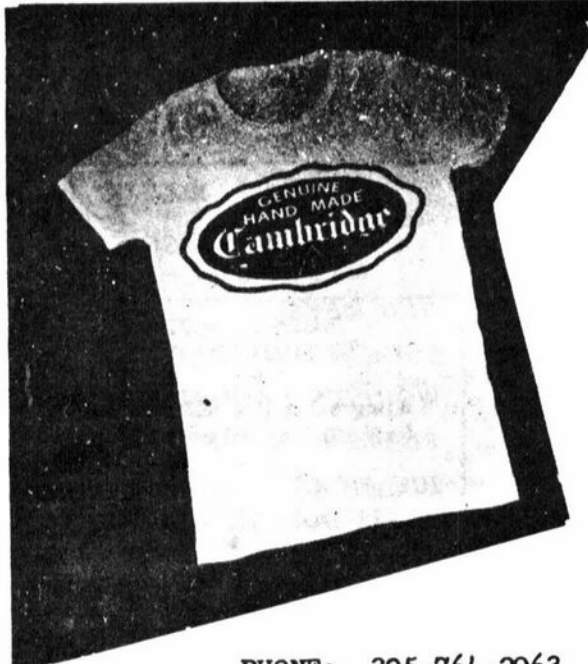
(blown or unusual pieces only)

o r

OLD POST CARDS

CHARLES MIKULIK
BOX 416

201-372-6344
ELIZABETH, N.J. 07207



T Shirts *by Brandt*

AN IDEAL GIFT FOR THE CAMBRIDGE COLLECTOR
A YELLOW T-SHIRT WITH A BLACK CAMBRIDGE SEAL!

FIRST QUALITY — SPECIAL \$7.50 each
(includes postage and handling)

The T-Shirt you saw at the Cambridge
Convention is now available in men's and
women's sizes!

PHONE: 305-764-2063

ORDER NOW: Send your check or money order (\$7.50 for each shirt) to:

T-Shirts by Brandt, 1305 N. W. 1st Avenue, Fort Lauderdale, Florida 33311

Please specify size when ordering: WOMEN: sm., med., lg. MEN: med., lg., x-lg.

* auction *

Plans are moving right along for our 1979 All-Cambridge Glass Auction to be held on March 3, 1979, at the Holiday Inn, Cambridge, Ohio.

Be sure to get your list of consignments into the Auction Committee as soon as possible. Now that the Holidays are over you probably have some spare time to go thru your glass and pick out the pieces you can bring yourself to part with ——— remember — all profits from this Sale are earmarked for the Museum Fund, so let's all pitch in and do our part!

There will be a cut-off at 300 lots of glass, so be sure to get your consignments in early! See page 3 of last month's CRYSTAL BALL for full details!

The DEADLINE for having your list of consigned glass to the Auction Committee is —

JANUARY 31, 1979

Start making your plans now to attend!!

QUARTERLY MEETING

The February Quarterly Meeting will be held on Friday evening, March 3, 1979, at 8 PM. If you are planning to attend the Auction, come early and attend both functions. More details next month!

ROCK CRYSTAL

Harvest

(1053)



P430
12 in. Bowl

DEALERS



DIRECTORY

<p>ANTIQUÉ ALLEY 24815 Broadway Bedford, Ohio 44146 216-232-7739 ---- Marie Spagnola CAMBRIDGE GLASS ROYAL DOULTON</p>	<p>BENICIA ANTIQUE SHOP 305 First Street Benicia, California 94510 OPEN 11 AM - 5 PM Closed Monday</p>	<p>CHARLES MIKULIK Box 416 Elizabeth, N. J. 07207 Phone 201-372-1101 BY APPOINTMENT ONLY!</p>
<p>CHURCH STREET ANTIQUES 6 Church Street Boston, Massachusetts 02116 George or Frank --- 617-426-1048 CAMBRIDGE, HEISEY, GENERAL LINE</p>	<p>Z. E. LOPES - 707-745-0978 VISIT HISTORIC BENICIA and its 28 shops Off Interstate #80 ----- ----- North of San Francisco</p>	<p>Always buying CAMBRIDGE BLUE CAPRICE in blown or unusual pieces only. CARRY MOST TYPES OF ANTIQUES</p>
<p>D & D ANTIQUES 184 East Kossuth Street (GERMAN VILLAGE) Columbus, Ohio 43206 DICK SLIPKO ----- 614-443-6020</p>	<p>GREEN ACRES FARM 2678 State Route 310 North Pataskala, Ohio, 43062 Sat. & Sun. 1-6 PM ---- W. Bryan CAMBRIDGE & HEISEY - 614-927-1882</p>	<p>FINDER'S KEEPER'S ANTIQUES P.O. Box 303 P.O. Box 16023 Dayton, O. Columbus, O. 45401 43216 513-254-2937 614-965-1906 SPECIALIZING IN CAMBRIDGE GLASS!</p>
<p>SWISS HILLS COLLECTIBLES Mary & Wilbur Henderson 303 Guilford Avenue Woodsfield, Ohio 43793 Shows Only -- 614-472-1133 SPECIALIZING IN CAMBRIDGE GLASS!</p>	<p>THE MOUSE HOUSE ANTIQUES Route 22 East Cambridge, Ohio 43725 Shirlee Bistor --- 614-432-3132 SPECIALIZING IN GLASSWARE!</p>	<p>HOBBY HOUSE ANTIQUES Rt. #1, Cambridge, Ohio - 43725 614-432-6971 - Frank & Lena Take Rt. #209 W. From Cambridge To RT. #658 - NORTH 1 1/2 MILES</p>
<p>THIS 'N' THAT PLACE 101 South Street Chagrin Falls, Ohio -- 44022 Lue Koerper ----- 216-247-4938 OPEN THURS.-SAT. -- 10 AM - 5 PM</p>	<p>GEORGE HOFFMAN ANTIQUES 129 South 4th Street Newark, Ohio 43055 ----- 614-345-8550 -----</p>	<p>D'MARIE'S ANTIQUES US Rt. 1 - just South of Rt. 606 Thornburg, Virginia 22565 703-582-6220 ----- Jim Rankin OPEN EVERY DAY 10 AM to 6 PM</p>
<p>'OUR GLASS ANTIQUES Box 27, Wills Point, Tex. 75169 20th CENTURY COLLECTIBLES fea- turing CAMBRIDGE GLASS! Shows- No Lists - SASE Please - PAUL & GINNY HENDERSON -- 214-563-6971</p>	<p>OLD TOLL GATE ANTIQUES Route #5, Box 7X Milan, Illinois 61264 SPECIALIZING IN HAVILAND CHINA MATCHING SERVICE</p>	<p>OLDE TOWNE ANTIQUES 307 W. St. Louis Street Lebanon, Illinois 62254 Edith Zimmerman -- 618-537-4567 GENERAL LINE ANTIQUES</p>
<p>S & J ANTIQUES 5616 Hensel Woods Road Gahanna, Ohio 43230 Sue & Jack Rettig - 614-855-1711 CAMBRIDGE GLASS OUR SPECIALITY</p>	<p>Use Schleigers book numbers or send saucer for pattern match. SASE APPRECIATED Marie Baker ----- 309-787-2392 GENERAL LINE OF ANTIQUES</p>	<p>WOLFE'S GLASS EMPORIUM 330 Woodlawn Avenue Cambridge, Ohio 43725 OPEN BY APPOINTMENT - JOHN WOLFE 614-432-2590 OR 614-262-9353</p>
<p>KILPATRICK'S ANTIQUES (Lu, Dort and Pat) S. E. Corner Public Square Troy, Ohio 45373 Res. (513) 335-1798 Shop 339-8754 WE BUY ONE PIECE OR COLLECTIONS!</p>	<p>THE GLASS CUPBOARD 39 Shire Oaks Drive Pittsford, New York 14534 Marcia Ellis 716-586-7596 CAMBRIDGE ONLY --- SASE FOR LIST</p>	<p>M & M ANTIQUES & COLLECTIBLES 310 N. Main - Box 417 Canton, Kansas 67428 The Martin's ----- 316-628-4705 SPECIALIZING IN CAMBRIDGE GLASS!</p>
<p>YOU CAN ADVERTISE YOUR ANTIQUÉ SHOP HERE! 1 inch - \$6 for six months</p>	<p>EVELYN M. ALLEN 135 Cynthia Street Heath, Ohio 43055 Mail Order & Shows 614-522-1635 SPECIALIZING IN CAMBRIDGE GLASS!</p>	<p>YOU CAN ADVERTISE YOUR ANTIQUÉ SHOP HERE! 1 inch - \$6 for six months</p>



National Cambridge Collectors, Inc.

P. O. Box 416, Cambridge, Ohio 43725

A nonprofit organization dedicated to the preservation and study of Cambridge Glass

You Are Cordially Invited To Become A Member Of The

NATIONAL CAMBRIDGE COLLECTORS, INC.

Benefits derived from membership include: receipt of our club publication, The Cambridge CRYSTAL BALL; informative Quarterly Meetings; Antique Shows; Auctions; and other special events.

The Cambridge CRYSTAL BALL is published the first of each month. This newsletter contains educational and interesting articles, questions and answers, information on reproductions and reissues, notices of all club functions, classified advertisements, dealers directory, and many other features of interest to collectors of Cambridge Glass.

Yearly dues are \$10.00 for Individual Members and \$3.00 for each Associate Member. All members have voting rights, but only one issue of the CRYSTAL BALL will be mailed per household.

Name (please print) _____ \$ 10.00

Mailing Address _____

City _____ State _____ Zip _____

Associate Members: (Must be at least 12 years of age and living in the same household.)

1. Name _____

2. Name _____

3. Name _____

Total number of Associate Members _____ @ \$ 3.00 each _____ \$ _____

TOTAL AMOUNT ENCLOSED: \$ _____

Please make check payable to: NATIONAL CAMBRIDGE COLLECTORS, INC.

Recommended by _____

Notice

All advertising, articles, and Study Group information to be included in the February, 1979 issue of the CRYSTAL BALL must be in our hands no later than

JANUARY 5, 1979!!!

DATES TO REMEMBER

QUARTERLY MEETING
March 2, 1979

ALL-CAMBRIDGE GLASS AUCTION
March 3, 1979

1979 CONVENTION & ANTIQUE SHOW
June 22, 23, 24, 1979

National Cambridge Collectors, Inc.
Post Office Box 416
Cambridge, Ohio 43725

FIRST-CLASS MAIL
U.S. POSTAGE
PAID
So. Vienna, Ohio
45369
Permit No. 15

FIRST CLASS MAIL

"Seems like every time history repeats itself, the price doubles."

—William R. Lewis

NATIONAL CAMBRIDGE COLLECTORS
ANNUAL CAMBRIDGE GLASS AUCTION



AUCTIONEER: Craig Connelly

LOCATION: Cambridge Holiday Inn
Intersection I70 & Route #209 North
Cambridge, Ohio

TIME: March 3, 1979 Preview: 9:30 A. M. Auction: 11:00 A. M.

All glass guaranteed to be Cambridge. The auction committee has attempted to check all glass to be auctioned. All pieces should be examined immediately and returned before five pieces are sold if the article is not perfect or as represented. There will be a few pieces sold with minor damage. These pieces are indicated in the catalog.

TERMS: Cash or check with proper identification day of sale. All sales are subject to Ohio Sales tax. $4\frac{1}{2}\%$ sales tax will be charged. Dealers may sign an exemption form if the items purchased are for resale in which case, no tax will be charged.

CATALOG INSTRUCTIONS: References used will be abbreviated as follows: N.C.C. 30-34-National Cambridge Collectors' Catalog I
N.C.C. 49-53-National Cambridge Collectors' Catalog II
WI- Welker's Cambridge Glass Co. Catalog Reprint I
WII-Welker's Cambridge Glass Co. Catalog Reprint II
The number in parenthesis () at the end indicates the amount of items of that particular listing to be sold.

MAIL BIDS: All bids must be accompanied by a check for the full amount bid. Bids will be executed secretly, and the bidder will pay only the final price not the full amount of the mail bid. Please include a stamped, self-addressed envelope with your bids. You will be notified if you were the successful bidder. If not, your check will be returned and the final selling price, noted. Ohio residents please include $4\frac{1}{2}\%$ Sales tax or your Vendor's #. If you wish to have the piece(s) shipped to you, please include a separate check for adequate shipping and insurance. All pieces will be shipped the week immediately following the auction. If you do not wish to have the piece(s) shipped, please indicate where and when you will pick up the piece(s). All mails bids should be addressed to: Lynn Welker
2 East Main Street
New Concord, Ohio 43762

To be eligible: Bids must be received by March 2, 1979

Motel Reservations: Phone 614-432-7313 Rooms rented will help us defray the cost of the auction room. Please park in the space indicated for the auction. Lunch available at the auction.

QUARTERLY MEETING: Friday March 2, 1979 8:00 P. M. at the Holiday Inn. Program will be Nude stemware and a preview of the auction glassware. Bring a friend and your Show & Tell glass.

Additional information: Phone 614-826-4418.

Bring this catalog to the auction with you. Additional copies: \$1.00 postpaid.

1. Light Emerald etched Imperial Hunt Scene tumbler, gold encrusted.
2. #3126 (shape) Carmen cocktails, Farber holders, (2)
3. #3 Moonlight Blue 5" star candlesticks, WI, p. 5.
4. #1042 Crystal 6½" Swan, N.C.C. 49-53, p. 23.
5. #1236 Royal Blue 8" ivy ball, crystal stem & foot, N.C.C. 49-53, p. 27.
6. #609 Crystal fork & spoon, original labels, N.C.C. 30-34, p. J.
7. #317 Georgian 5 oz. tumbler, 1 each: Amethyst, Emerald Green, Mandarin Gold, WII, p. 37.
8. #1095 Crystal sugar & creamer on Ebony tray, N.C.C. 30-34, p. 42.
9. #3400/11 Gold Krystol 6" mayo. dish only, Etch Gloria, N.C.C. 30-34, p. 73
10. Yardley jar, 2³/₄" across, flesh colored opaque, original lid.
11. #135 Mandarin Gold 5" Corinth comport, N.C.C. 49-53, p. 40B.
12. #14 Heliotrope 10" bowl, WL, p. 105.
13. #41 Emerald Cascade sugar & creamer, N.C.C. 49-53, p. 227.
14. #3011/25 Crystal Nude stem ivy ball, potic, WI, p. 44.
15. #1369 Amethyst 2½ oz. tumblers, melon shape (match decanter-WII, p. 16, #1369) (4)
16. #1371 Crown Tuscan Bridge Hound, original label, WI, p. 28.
17. #16 (flattened) Crown Tuscan Seashell comport, WI, p. 46.
18. Light Emerald meat platter, Etch 732 (N.C.C. 30-34, p. 28 for etching)
19. Gold Krystol crackle shot glass
20. Gold Krystol crackle 5¼" tumbler.
21. Royal Blue marmalade, Farber chrome cover & holder, spoon marked S.E.B. Sterling plate, Bennett Pl. 32, Row 1, #4.
22. #3126 (shape) Royal Blue 4½ oz. claret, Farber chrome holder.
23. #3400/156 Royal Blue decanter, crystal stopper, WII, p. 16.
24. #674 Peachblo 13" bowl, Etch #732, signed, N.C.C. 30-34, p. 31.
25. #628 Peachblo candlesticks, Etch #732, N.C.C. 30-34, p. 31.
26. Heliotrope perfume atomizer, gold encrusted etching, orig. fittings.
27. Emerald 3 pc. smoker set, #SS35 base, Crystal #1712 cover, 1-#1712 Emerald ashtray, N.C.C. 49-53, p. 152.
28. Royal Blue candlecup, Farber chrome filigree holder.
29. #3400/1240 Crystal 12" oval bowl, rock crystal cut Achilles, 4 ftd.
30. #319 Light Emerald Georgian 9 oz tumblers 3(2 signed), N.C.C. 30-34, p. 44.
31. #319 Moonlight Blue Georgian 9 oz. tumblers, N.C.C. 30-34, p. 44, (3).
32. #319 Mandarin Gold Georgian 9 oz. tumblers, N.C.C. 30-34, p. 44, (2).
33. #319 Peachblo Georgian 9 oz. tumbler, signed, N.C.C. 30-34, p. 44.
34. #319 Dark Amber Georgian 9 oz. tumbler, N.C.C. 30-34, p. 44.
35. #319 Dark Emerald Georgian 9 oz. tumbler, N.C.C. 30-34, p. 44.
36. #319 Amethyst Georgian 9 oz. tumbler, N.C.C. 30-34, p. 44.
37. #1114 Crystal 6½" Bashful Charlotte flower figure, N.C.C. 30-34, p. 49.
38. #674 Light Emerald 12½" bowl, signed, N.C.C. 30-34, p. 63(no cutting).
39. #74 Martha Washington Crystal 7"- 4 compartment relish, Sterling Silver gadroon border, WI, p. 79.
40. #968 Light Emerald cocktail icer & liner, Etch #731 (tiny chip on one liner), N.C.C. 30-34, p. 44, (4).
41. #1402/4 Royal Blue Tally-Ho 10 oz. Lunch goblet, N.C.C. 30-34, p. 32-33.
42. #1402/3 Royal Blue Tally-Ho 5 oz. low stem juice, N.C.C. 30-34, p. 32-33.
43. #5 Azurite 7¼" bowl, gold encrusted fruit trim, WI, p. 105.
44. #56 Ebony ftd. bowl, gold encrusted border, WI, p. 106.
45. #68 Ebony 10" candlesticks, match above bowl, WI, p. 102.
46. #1380 Crystal 26 oz decanter, portrait decor, original label, WII, p. 17
47. #3011/3 Amethyst Nude stem champagne, N.C.C. 30-34, p. 34-2.
48. #3011/7 Amethyst 4½ oz. Nude stem claret, N.C.C. 30-34, p. 34-2.
49. #597 Light Emerald 8³/₈" Decagon plates, Etch #732, encrusted Nanking green enamel, N.C.C. 30-34, p. C, (2).

50. #3797/54 Crystal 6" Cambridge Square comport, N.C.C. 49-53, p. 36H.
51. #1402/94 Amber Tally-Ho 12" celery, N.C.C. 30-34, p. 33-4.
52. Peachblo creamer, sugar (signed) & tray.
53. #1307 Crown Tuscan candlestick, gold encrusted D995-Chintz, rare acid stamp Crown Tuscan signature, N.C.C. 30-34, p. 33-30.
54. Light Emerald sugar, Etch #704, signed, N.C.C. 30-34, p. A.
55. #931 Light Emerald 5½" individual cake tray, signed, N.C.C. 30-34, p.38.
- The following items (56-63) are all Crystal Caprice;
56. #33-14" cabaret plate, N.C.C. 49-53, p. 2.
57. #66-13" oval crimped bowl, N.C.C. 49-53, p. 2.
58. #136-7" comport, N.C.C. 49-53, p. 3.
59. #165-6" 3 toed candy and cover, N.C.C. 49-53, p. 3.
60. #206 3" ashtrays, triangle shape, WI, p. 74, (4).
61. #82-13½" cupped bowl, 4 footed, N.C.C. 49-53, p. 2.
62. #70 Alpine 7" candlesticks with prism, WL, p. 6.
63. #41 Alpine sugar, WI, p. 75.
- The following items (64-69) are all Moonlight Blue Caprice;
64. #32-2¼" nut dish, 3 toed individual, WI, p. 47, (2 have labels), (9).
65. #96 Salt & pepper, glass lids, WI, p. 74.
66. #97-3 piece salt & pepper set, WI, p. 74.
67. #207 Cigarette box, 3½" X 2½", WI, p. 74.
68. #236-8" rosebowl, 4 footed, large size, WII, p. 35.
69. #26-11½" plate, 4 footed, scratched, N.C.C. 49-53, p. 2A.
70. #151 Mandarin Gold Caprice 5"-2 handled jelly, N.C.C. 49-53, p. 227.
71. #26 Pistchio (pale green) Caprice 12" plate, 4 toed, N.C.C.49-53, p.2A.
72. #1043 Crystal 8½" swan, N.C.C..49-53, p. 23.
73. #1040 Crystal (sun colored) 3" swan, N.C.C. 49-53, p. 152.
74. Rubina 10½" basketweave vase, rare.
75. Heliotrope Ram's Head bowl & Doric column candlesticks (gold trim on the bowl), Welker Color I, Pl. 6, Row 2, #2. Rare
76. Heliotrope Laurel Wreath 8" plate, gold trim, matches above.
77. Heliotrope 10" Doric column lamp.
78. #278 Crown Tuscan 11" vase, WI, p. 49.
79. #27 Everglades Crystal creamer, WII, p. 19.
80. #320 Heatherbloom 7 oz. old fashioned, cut flute (small crack on one), signed, N.C.C. 30-34, p. 44, (5).
81. #1203 Carmen 7 oz. old fashioned, WII, p. 10.
82. #1121 Light Emerald ice pail w/tongs, Etch #695, signed, N.C.C.30-34, p46.
83. Amber sugar & creamer, Farber holders.
84. Forest Green sugar & creamer, Fraber holders.
85. #3400/6 Peachblo cheese & cracker, Etch AppleBlossom, gold encrusted medallions, signed, N.C.C. 30-34, p. 1.
86. #880 Dianthus Pink tumbler holder only, N.C.C. 30-34, p. 31-18.
87. #3400/92 Amethyst 32 oz. ball decanter (damage to bottom of stopper), N.C.C. 49-53, p. 16.
88. #1506/4 Mocha 5" novelty basket, plate shape, signed, WI, p. 34, (2)
89. #575 Crown Tuscan 9" cornucopia vase, N.C.C. 49-53, p. 32.
90. #41 Mandarin Gold Cascade sugar & creamer, N.C.C. 49-53, p. 227.
91. #787 Light Emerald 9½" vase Etch Martha, WI, p. 90.
92. #3175 Pink Georgian sherbet, original labels, WII, p. 37, (2).
93. #3175 Mandarin Gold Georgian sherbet, WII, p. 37.
94. #3500 Carmen long bowl goblet, crystal stem & foot, N.C.C. 30-34, p.33-9
95. #1040 Amberina 3" swan, signed, Style II, WI, p. 26, rare, (2)
96. #3400/106 Forest Green marmalade w/cover, N.C.C. 30-34, p. 33-7.
97. #3900/123 Crystal 7" Corinth relish or pickle, N.C.C. 49-53, p. 39.
98. #628 Crystal candlestick with #1563 candle arm, N.C.C. 49-53, p. 158.

99. #34 Crown Tuscan 3" Seashell ashtray, enamel rose decor, WI, p. 47.
100. #33 Crown Tuscan \$' Seashell ashtray, enamel rose decor, WI, p. 47.
- The following items (101-134) are all NEARCUT:
101. #2631 Marjorie water bottle, signed, WII, p. 99.
102. #2631 Marjorie sugar & creamer, WII, p. 108.
103. #2631 Marjorie handled custard or punch cup, WI, p. 114, (4).
104. #3200 Cut Wild Rose 6" nappy, 2 handled, scratched, WI, p. 118.
105. #2699 Buzz Saw #272-9" nappy, signed, WI, p. 116.
106. #2699 Buzz Saw #272-9" nappy & (6) #269-5" nappies, signed, WI, p. 116.
107. #2699 Buzz Saw #1 sugar & lid, chip on pattern, signed, WI, p. 116.
108. #2699 Buzz Saw #1 spooner, unsigned, WI, p. 116.
109. #2699 Buzz Saw #97 celery, tall handled, signed, WI, p. 116.
110. #2699 Buzz Saw 10½" shallow bowl, signed.
111. #2651 Feather whiskey tumbler, WII, p. 108.
112. #2651 Feather 10" salver (cakestand), signed, WII, p. 105.
113. #2651 Feather sherbets, signed, WII, p. 109, (3).
114. #2651 Feather 8" tall comport, signed, Bennett, p. 71, Row 2, #1.
115. #2651 Feather wine, gold border trim.
116. #2660 Wheat Sheaf sugar base (no lid), signed.
117. #2351 Handled custard or punch cup, WII, p. 101.
118. #2780 Strawberry creamer, signed, WII, p. 100.
119. #2780 Strawberry spooner, signed, WII, p. 100.
120. #2780 Strawberry butter & cover, signed, WII, p. 100.
121. #2780 Strawberry 10½" celery tray, signed, WII, p. 100.
122. #2780 Strawberry 9" belled nappy, signed, WII, p. 100.
123. #2780 Strawberry 7½" cupped nappy, signed, WII, p. 100.
124. #2780 Strawberry jelly comport, unsigned, (2).
125. #2780 Strawberry 4" nappy marigold carnival, signed, WII, p. 100.
126. #2780 Strawberry 6½" nappy, green carnival, signed, WII, p. 100.
127. #2766 Thistle 4" nappy, amethyst carnival, signed, WII, p. 100,
(nappy A for shape only).
128. #2695 Star bowl, signed.
129. #2676 Oval orange bowl, signed.
130. #2647 Dorothy punch bowl & 8 cups, signed, WII, p. 107.
131. Nearcut bowl, unidentified pattern, signed.
132. LaTouraine 7¼" X 4¼" oblong dish, signed.
133. #140 candy mug, WII, p. 111, (2).
134. #2892 Guernsey Semi-Colonial 11" celery tray, WII, p. 98.
135. Amber 3 footed dresser boxes, original green celluloid lids, sgd, (2).
136. #1066 Carmen ivy ball, crystal stem & foot, N.C.C. 49-53, p. 152D.
137. #1090 Ebony 7" comport, silver encrusted D975 Adams, N.C.C.30-34, p.31-10.
138. #1040 Mandarin Gold 3" swan, N.C.C. 49-53, p. 152.
139. #605 Crystal coaster, WI, p. 23.
140. #9403 Crystal 12 oz. tumbler, D987 Sport novelty, N.C.C. 30-34, p. 31-20
141. #156 Crystal oyster plate, WII, p. 38.
142. #35 Emerald Seashell cigarette box & cover, N.C.C. 49-53, p. 151.
143. #1044 Peachblo 10" swan, signed, N.C.C. 30-34, p. 48.
144. #278 Crystal 11" vase, Wood Lily silk screen decor, N.C.C. 49-53, p. 157C
145. #3500 Crystal long bowl goblet, Flower & basket silk screen gold
decor, N.C.C. 30-34, p. 33-9.
146. Yardley jar, original lid, flesh colored opaque.
147. Cornflower Blue 9¼" bowl, ribbed panel pattern, signed.
148. Cornflower Blue 2½" ashtray, hat shaped.
149. #3011 Crown Tuscan Nude stem cocktail with Gold Krystol bowl,
N.C.C. 49-53, p. 148A, (2).
150. #56 Azurite 9¼" footed bowl, WI, p. 106.

151. #3500/25 Moonlight Blue Ram's Head bowl, N.C.C. 30-34, p. 33-11,
& matching candlesticks (similar to N.C.C. 30-34, p.33-15, #3500/31).
152. #1630 Peachblo 12 oz. tumbler, Etch #732, N.C.C. 30-34, p. 49.
- The following items (153-157) are all Willow Blue Decagon:
153. #979 sugar & creamer, signed, N.C.C. 30-34, p. 24.
154. #597-8³/₈" plates, signed, N.C.C. 30-34, p. 22, (9).
155. #865 cup & saucer (cups unsigned, saucers signed), N.C.C. 30-34, p.20 (8)
156. #870-11" center handled sandwich tray, N.C.C. 30-34, p. 19 for shape.
157. #1084-13" service tray, signed, N.C.C. 30-34, p. 26.
158. Primrose console set, 3¹/₂" bowl, 9" candlesticks, Bennett Pl. 4, Row 2.
159. Primrose 14" vase lamp, Bennett, Pl. 2, Row 3, #2.
160. #3011/13 Pistachio Nude stem brandy, N.C.C. 30-34, p. 34-2.
161. #1221 Crystal 5 oz. swan punch cup, N.C.C. 49-53, p. 19.
162. #1043 Light Emerald 8¹/₂" swan, signed, N.C.C. 30-34, p. 48.
163. Cambridge Square Crystal cigarette holder, Etch Vanadium advertising.
164. #925 Experimental blue opaque saucer only, signed, N.C.C. 49-53, p.8B.
- The following items (165-183) are all Mt. Vernon:
165. #52 Amber 40 oz. decanter & stopper, N.C.C. 30-34, p. 32-26.
166. #22 Amber 3 oz. footed tumbler, N.C.C. 30-34, p. 32-36 (matches above)(4
167. #22 Forest Green 3 oz. footed tumbler, N.C.C. 30-34, p. 32-36.
168. #22 Royal Blue 3 oz. footed tumbler, N.C.C. 30-34, p. 32-36.
169. #52 Carmen 40 oz. decanter & stopper, N.C.C. 30-34, p. 32-36.
170. #22 Carmen 3 oz. footed tumblers, N.C.C. 30-34, p. 32-26(matches above)(2
171. #21 Carmen 5 oz. footed tumbler, N.C.C. 30-34, p. 32-26.
172. #8 Gold Krystol sugar & creamer, N.C.C., p. 32-26.
173. #12 Amber 5¹/₂" ivy ball, (minor flaw top of base), WI, p. 81.
174. #2 Violet 6¹/₂ oz. tall shertet, Welker Color I, Pl. 6, Row 3, #1, rare.
175. #1 Amber 10 oz. goblet, N.C.C. 49-53, p. 4, (2).
176. #1 Royal Blue 10 oz. goblet, N. C. C. 49-53, p. 4.
177. #1 Crystal 10 oz. goblet, N.C.C. 49-53, p. 4.
178. #21 Crystal 5 oz. footed tumbler, N.C.C. 49-53, p. 4, (8).
179. #27 Crystal 3 oz. wine, N.C.C. 49-53, p. 4 (6).
180. #22 Crystal 3 oz. footed tumbler, N.C.C. 49-53, p. 4 (12).
181. #20 Crystal 12 oz. footed tumbler, N.C.C. 49-53, p. 4.
182. #72 Crystal 8" coupe salad, N.C.C. 30-34, p. 32-25A.
183. #31 (tinted) fruit saucer & #19-6" plate, N.C.C. 30-34, pp.32-26&27.
184. #6004 Carmen vase, crystal foot, WI, p. 51.
185. Carmen cocktails, Farber holders, (2).
186. #3400/38 Heatherbloom 80 oz. ball jug, optic, N.C.C. 30-34, p.33-7, rare.
187. #1570 cheese preserver & cover, original label, N.C.C. 49-53, p. 28.
188. #3011/25 Crytal Nude stem ivy ball, optic, WI, p. 44.
189. #647 Crown Tuscan 6" double candlesticks, gold encrusted Etch
Rosepoint, color variation, N.C.C. 49-53, p. 11.
190. #3400 low sugar & creamer, Farber holders, lid, & tray (crack 1 holder).
191. Gold Krystol luncheon set: 10-#865 cup, 9-#865 saucer, 7-#597-
8³/₈" plate, all signed, N.C.C. 30-34, pp. 20 & 22.
- The following items (192-195) are all Amber Etch Cleo:
192. #865 Decagon cups (4), 3 signed & saucers (2), N.C.C. 30-34, p. 10.
193. #815 Decagon 7¹/₂" plates, N.C.C. 30-34, p. 21, (3).
194. #870 Decagon 11" center handled sandwich tray, N.C.C. 30-34, p.19 (shape)
195. #94 Sweet pea vase, 7" across X 5" high, WI, p. 100.
196. #31 Crystal 16" Everglades plate, N.C.C. 30-34, p. 33-29B.
197. #26 Crystal Everglades footed sugar, WI, p. 26.
198. #487 Peachblo 12" oval cracker set plate only, Etch #732, N.C.C. 30-34, p.31
199. #3400 Milk Glass handled jug salt & pepper, Brass Farber holders,
original Farber labels, rare.

200. #2 Crystal 4" star candlesticks, N.C.C. 49-53, p. 11.
201. #317 Carmen Georgian 5 oz. tumblers (1 chip base), WII, p. 37, (7).
202. #138 Peachblo sugar & creamer, gold encrusted trim, N.C.C. 30-34, p.34.
203. #3500 Royal Blue 4" X 7" divided rectangular dish, Farber chrome lid and filigree base.
204. Willow Blue center handled condiment tray for salt/pep or cruets.
205. #2368 Azurite 10" vase, red enamel and gold trim, WI, p. 103.
206. #18 Crystal 11½" Seashell (flattened to plate), 3 toed, WI, p. 46.
207. #12 Heliotrope 12½" shallow, cupped bowl, WI, p. 105.
208. #3011/2 Carmen Nude stem table goblet, N.C.C. 30-34, p. 34-2.
209. #1401 Amber 8 sided dresser box, original green celluloid lid.
210. #533 Light Emerald mayo set (no ladle), unknown etch, signed, N.C.C. 30-34, p. 31 for shape.

The following items (211-223) are etchings on Crystal:

211. Appleblossom 7" (Tally-Ho blank) liner plate, saucer ring.
212. Betty #281-12" vase, N.C.C. 30-34, p. 51.
213. Diane #3900/129 2 part mayo (no ladle), N.C.C. 49-53, p. 67.
214. Diane #3400-11"-2 handled oval 3 compartment relish (minor nick).
215. Elaine #3500/37-8" comport, 2 handled, N.C.C. 30-34, p. 33-10.
216. Portia #147-8 oz. marmalade and cover, WI, p. 23.
217. Portia 12" square cocktail shaker, chrome top, spout, & stopper.
218. Portia #1402/22-10½"-3 compartment bowl (Tally-Ho blank), WII, p. 42.
219. Portia #647 candlesticks 6" 2 light, N.C.C. 49-53, p. 11.
220. Roselyn #3500/54-6", 2 handled, footed bonbon, N.C.C. 49-53, p. 90D.
221. Rosepoint 3121 stem 12 oz. footed iced teas, N.C.C. 49-53, p. 49, (6).
222. Rosepoint #278-11" vase, N.C.C. 49-53, p. 48.
223. Wildflower #1620-9" footed vase, WI, p. 29.
224. #30 Crown Tuscan 9"-3 compartment relish, 4 toed, signed, WI, p. 48.
225. #3400/119 Royal Blue 12 oz. ball jug decanter, N.C.C. 49-53, p. 16 & (6) #1341 Royal Blue 1 oz. cordials, N.C.C. 49-53, p. 25.
226. #319 Royal Blue Georgian 9 oz. tumblers, N.C.C. 30-34, p. 44, (6).
227. #308 Heliotrope 4½" ball vase, N.C.C. 30-34, p. 33-20 for shape.
228. Rubina 7" footed bowl, signed, Bennett, Pl. 4, Row 2, #4.
229. #870 Light Emerald 11" center handled sandwich tray, N.C.C.30-34, p. 19.

The following items (230-233) are Light Emerald Etch Cleo:

230. 3 piece oval mayonnaise set.
231. #867 Decagon footed sugar & cremaer, N.C.C. 30-34, p. 24.
232. #979 Decagon sugar & creamer, N.C.C. 30-34, p. 24.
233. #3060-9 oz. goblet, optic, (2).
234. #274 Crown Tuscan 10" bud vase, enamel roses & gold, WI, p. 49.
235. #31 Crown Tuscan Seashell 8" oval dish, 4 footed, N.C.C. 49-53, p. 30.
236. #3400/113 Amber 35 oz. ball jug decanter, Farber chrome pedestal base (damage to bottom of stopper), WII, p. 16, & (4) Amber #3126 shape cocktails, Farber stem holders.
237. #319 Mandarin Gold Georgian 12 oz. tumbler, original label, WII, p. 37.
238. #3400/67 Crystal 12"-5 part relish, engraved flowers, Sterling Silver filigree trim, N.C.C. 30-34, p. 75 for shape.
239. #1040 Mandarin Gold 3" swan, N.C.C. 49-53, p. 152.
240. #1040 Ebony 3" swan, (StyleII), signed, N.C.C. 49-53, p. 23, rare.
241. #96 Amber ½ pound candy jar, WI, p. 101.
242. #847 Light Emerald ice tub w/tongs, signed, N.C.C. 30-34, p.46 shape.
243. #942 & #943 Light Emerald sugar & cover (handle damage) & creamer, N.C.C. 30-34, p. 39.
244. Light Emerald 9³/₄" bowl, unknown design, large signature.
245. #1233 Royal Blue 9½" vase, crystal stem & foot, WI, p. 50.
246. #72 Crystal Cascade 6"-2 light candlestick, N.C.C. 49-53, p. 69.

247. #3500/55 Ebony 6" basket, 2 hdd, gold flower decor, WI, p. 17.
248. #1321 Amber 28 oz. decanter, N.C.C. 49-53 & (4) #3400/92
Amber 2½ oz. barrelss, optic, N.C.C. 49-53, p. 25.
- The following items (249-251) are all Gold Krystol Etch Apple Blossom:
249. #3400/59-9" pickle tray, signed, N.C.C. 30-34, p. 5.
250. #3400/11-6" mayo only, signed, N.C.C. 30-34, p. 2.
251. #3400/56-5½" fruit saucer, signed, N.C.C. 30-34, p. 5.
252. #55 Amber Heirloom 10 oz. ftd. stein, crystal handle, N.C.C.30-34,p.32-24
253. #55 Amber Heirloom 10 oz. ftd. stein, same as above.
254. #3011 Amethyst Nude stem ashtray, N.C.C. 30-34, p. 34-2.
255. Carmen 7¼" plate.
256. #3400/38 Amber 80 oz. ball jug, optic, crystal handle, N.C.C.30-34p33-7.
- ~~257. #16 Ebony 7½" bowl, floral decor, signed, WI, p. 105.~~
258. #2 Moonlight Blue 4" star candlesticks, WI, p. 5.
259. #1094 Light Emerald sugar & creamer, N.C.C. 30-34, p. 24.
260. Light Emerald sugar & creamer on center handled tray.
261. #25 Forest Green Evergaldes 8" plates, scratched, N.C.C 30-34,p33-25 (2)
262. #317 Peachblo Georgian 9 oz. tumblers, N.C.C. 30-34, p. 44, (5)
263. Cheese preserve & cover, 7½" across X 5" high.
264. #2 Crystal 4" star candlesticks, N.C.C. 49-53, p. 11.
265. #317 Crystal Georgian 9 oz. tumbler, N.C.C. 30-34, p. 44.
266. Peachblo 7" plate, signed, Etch Lady Blowing Bubbles.
267. Light Emerald covered dresser compact, early Etch Wildflower, Patent.
268. Peachblo sugar & creamer, sugar signed.
269. #941 & #943 Peachblo sugar & creamer, Etch #732, N.C.C. 30-34, p. 39.
270. #124 Peachblo pitcher (no lid), Etch #732, N.C.C. 30-34, p. 47 shape.
271. #3109 Peachblo 3½ oz. cocktails, N.C.C. 49-53, p. 155, (6).
272. #2899 Ebony 3" flower holder, Patent mark, N.C.C. 30-34, p. 49.
273. #2899 Gold Krystol flower holder (domed top) Pat. mark, same refer.
274. #984 Light Emerald Decagon 10" bowl, 2 handled, unknown ethcing
& gold trim, signed, N.C.C. 30-34, p. 19.
275. 1973 Crystal Cambridge Collectors' Caprice 8½" plate.
276. 1974 Blue Cambridge Collectors' Caprice 8½" plate, (2).

There may be a few additional items sold that are not included in the catalog. All damage is indicated. Please read descriptions carefully when using this catalog for mail bidding.