

Cambridge



Crystal Ball

ISSUE NO. 68

DECEMBER 1978

Published monthly by the National Cambridge Collectors, Inc.
To encourage and to report the discovery of the elegant and boundless product
of the Cambridge Glass Company, Cambridge, Ohio



Holiday Greetings

And Every Good Wish for The New Year

MEMBERSHIP RENEWAL NOTICE

If the date on your address label is -- 12-78
This is your **LAST ISSUE** of the
CRYSTAL BALL. Please renew NOW!

Your Officers, Board of Directors,
and Crystal Ball Staff

CAMBRIDGE CRYSTAL BALL

Official publication of National Cambridge Collectors, Inc., a non-profit corporation with tax exempt status. Published once a month for the benefit of its members. Membership is available for individual members at \$10 per year and additional members (12 years of age and residing in the same household) at \$3 ea. All members have voting rights, but only one CRYSTAL BALL will be mailed per household.

Back issues of the CRYSTAL BALL are available to members only, at a cost of 60¢ ea. or 12 issues for \$7.

1978-79 Officers & Committee Chairpersons

PRESIDENT ----- William C. Smith
VICE-PRESIDENT ----- George W. Hoffman
SECRETARY ----- Janice Y. Hughes
TREASURER ----- Doris J. Isaacs
SERGEANT-AT-ARMS ----- George W. Hoffman
BUDGET & FINANCE ----- William C. Smith
BY-LAWS -----
CONVENTION ----- George W. Hoffman
MEMBERSHIP ----- Josephine A. Barstow
MUSEUM ----- Arnold Lynd
PROGRAM & ENTERTAINMENT - Charles A. Upton
PROJECT -----
PUBLICITY -----
STUDY GROUP ADVISORY ---- Janice Y. Hughes

1979 CAMBRIDGE AUCTION ----- Lynn Welker

CRYSTAL BALL Editor ----- Phyllis D. Smith

CLASSIFIED ADVERTISING RATES

5¢ per word \$1.00 minimum

We cannot mix type size in classified advertisements. Abbreviations and initials will count as words. Payment in full must accompany all ads.

DISPLAY ADVERTISING RATES

	Members	Non-Members
1/8 page -----	\$ 4.00 - - -	\$ 6.00
1/4 page -----	7.00 - - -	10.00
1/2 page -----	12.00 - - -	18.00
3/4 page -----	17.00 - - -	25.00
Full page -----	22.00 - - -	33.00

DEALERS DIRECTORY

1" ad ----- \$6.00 for 6 months

Cambridge CRYSTAL BALL assumes no responsibility for items advertised and will not be responsible for error in price, description or other information.

Advertising copy must be in our hands by the 15th of each month to assure publication in our next issue. Advertisements containing reproductions will not knowingly be accepted unless clearly stated.

PLEASE ADDRESS ALL CORRESPONDENCE TO

Cambridge CRYSTAL BALL
National Cambridge Collectors, Inc.
P. O. Box #416
Cambridge, Ohio 43725

PLEASE NOTIFY US IMMEDIATELY OF ANY CHANGE
IN YOUR ADDRESS!

Please enclose a self-addressed, stamped envelope when requesting information!!

Club News

National Cambridge Collectors, Inc.
Quarterly Meeting
November 11, 1978
Bakers Restaurant, Norwich, Ohio

The meeting was called to order at 8:10 PM by President Smith. In attendance were 45 Club members and 9 Board members. The minutes of the August 27, 1978, meeting were read by Janice Hughes and approved.

The Treasurers report was given by Janice Hughes showing the Club has a balance of \$3,139.46 and the Museum Fund \$31,447.76. The two Certificates of Deposit earned \$157.67 this quarter and \$1,050.59 for the year.

President Smith reported there was a problem with the mold for the Bookends, but as soon as it is ready, they will be made in Smoke.

President Smith introduced Florence and Joseph Lipper from Queens, Long Island, New York.

COMMITTEE REPORTS

BY-LAWS: No report.

CONVENTION: Chairman George Hoffman reported that Harold and Mildred Willey will be in charge of the Display Room, he has a possible speaker and the location will be the Shenandoah Inn, Old Washington, Ohio.

CRYSTAL BALL: Editor Phyllis Smith reported she is now using a First Class Permit, if anyone does not receive a CRYSTAL BALL, please advise. She would welcome comments pro or con.

MEMBERSHIP: Chairman Jo Barstow reported we now have 557 \$10 members, 213 \$3 members, 5 Honorary members, for a total of 775. President Smith advised if anyone needed membership applications for a meeting or show we would furnish same.

STUDY GROUP ADVISORY: Chairman Janice Hughes reported we now have three new

continued on page 13

* auction information *

The 1979 N. C. C. ALL-CAMBRIDGE GLASS Auction will be held March 3, 1979, at 11 AM, in the Holiday Inn, Cambridge, Ohio. Our Auctioneer will be Craig Connelly from Granville, Ohio. All glass to be sold will be guaranteed to be Cambridge and the proceeds will benefit N.C.C. Lunch will be available in the Auction room.

Reservations are now being accepted for rooms for N.C.C. members and others wishing to attend the Auction. Every room rented will help defray the cost of the Auction facilities. Room reservations may be made by phoning the Holiday Inn at 614-432-7313.

CONSIGNMENTS: Consignments for the Auction are now being accepted. Consigned glass should be in good condition and must be Cambridge Glass. A 20% Consignment Fee will be charged by N.C.C. with all proceeds going to the Museum Fund. Glass for consignment must be received by the Auction Committee no later than January 31, 1979.

You may, however, send us a detailed list (with references) of those items to be consigned and not bring the items until the Quarterly Meeting in February.

DROP OFF POINTS for consigned glass are as follows:

Lynn Welker, New Concord, Ohio, 614-826-4418.

Frank Wollenhaupt, Dayton, Ohio, 513-254-2937.

Janice Hughes, Cambridge, Ohio, 614-432-7823.

Jack Rettig, Gahanna, Ohio, 614-855-1711.

Bill Smith, Springfield, Ohio, 513-323-3888.

George Hoffman, Newark, Ohio, 614-345-8550.

Please do not consign items badly damaged or pieces that are definitely not Cam-

bridge. The Auction Committee does reserve the right to reject pieces for Auction because of damage, duplication, or questionable origin.

We must have your glass (or your detailed list) by JANUARY 31, 1979, in order to insure that the Catalog reaches each member prior to the Auction. You may consign as many pieces as you wish - there is no maximum.

CATALOG: Each member household will receive a detailed, referenced, catalog of each item to be auctioned. Mail bidding will be accepted as usual. A check for each item, plus postage must accompany your mail bid. Bids will be executed in secret. The item will be mailed out the week following the Auction or your check will be returned if you are not the successful bidder. Please enclose SASE with your bids.

We hope to have between 250 and 300 pieces of glass to auction. If we receive 300 pieces, the consignments will be cut off. We will try to sell 60 pieces an hour so the Auction should end by 4 PM.

Plan now to attend as this is always a fun event. More details will appear in the next issue of the CRYSTAL BALL.

Lynn Welker
Auction Chairman



PHOTO TAKEN AT PREVIOUS AUCTION!

QUARTERLY MEETING REPORT

by Phyllis Smith

The National Cambridge Collectors, Inc. held their Quarterly Meeting on November 11, 1978 at Bakers Restaurant, Norwich, O. The minutes of this meeting have been reproduced beginning on page 2 of this issue and we direct your attention to them. This report will deal directly with the Program for the evening, entitled "Cambridge Candlesticks".

As has become the custom, the Program and Entertainment Committee, headed by Charles Upton, presented yet another outstanding program, much to the enlightenment and the enjoyment of the 54 members who were in attendance. This color slide program was beautifully presented by David Rankin and Lynn Welker.

"Candleholders by Cambridge", is an extremely large and seemingly endless field of study. There were approximately 83 slides and most of them were of different sticks. Even so, there were many candleholders produced by the Cambridge Glass Company that were not shown

There was no real attempt to show the different colors or decorative treatments that can be found for each candleholder. It was more the purpose of the Committee to allow us a view of as many different patterns and styles as possible.

Lynn did an excellent job of providing the



CHARLES UPTON IS SHOWN HERE WITH A LOVELY ROYAL BLUE TALLY-HO COCKTAIL SHAKER!

narrative for each slide as it was shown us by David. Lynn's presentation included such information as the Company's name and pattern number for each stick, as well as, descriptions of known colors and decorations for each stick as it was shown.

It is most regrettable that it is not possible to describe in such limited space the entire program for the benefit of our many members who could not be in attendance.

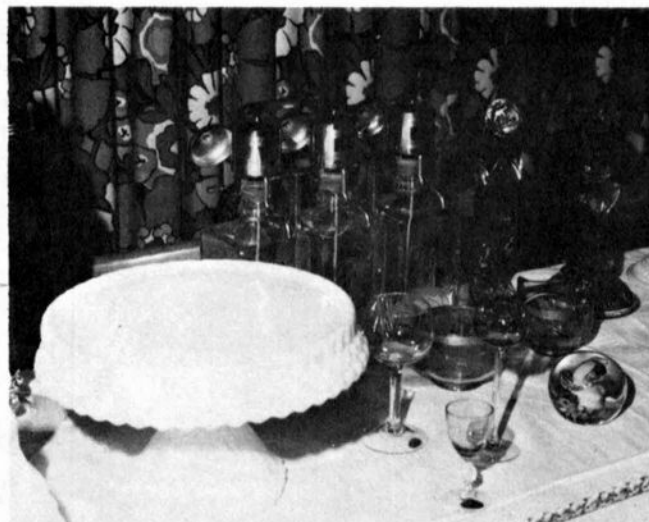
This slide presentation will no doubt be added to our other slide programs for rent by N.C.C. It has been suggested that these programs be shown during our Convention in 1979, and it is hoped that our Convention Chairman will be able to make arrangements for this to take place.

After the Candlestick slide presentation, we were treated to another group of slides by Frank Wollenhaupt. These slides were taken during our 1978 Convention in our Display Room. They were breath-taking.

Charles Upton and David Rankin handled the "Show and Tell" portion of the program by describing the many items on display. As is always the case a few of the items presented for identification were not Cambridge glass, but the majority were.

To mention just a few of the more outstanding pieces, we must begin with the milk glass Virginian cake stand. This has been seen in catalogs, but it was the only one that those present had seen in person. Many have been seen in crystal, but this was a first for milk glass. Also numbered among the unusual was a flat tumbler with the rare "Vichy" etching; a set of three whiskey decantors in their own carrying case, complete with pump tops (see NCC 49-53, pg. 187 for bottles); and perhaps most rare of all was a plainware creamer and sugar, etched Blue Willow in the blue bell color and trimmed with gold.

The next Quarterly Meeting will be held in February, 1979 (date will be set later), and it is hoped that it will be our Book-end Dinner. The mold work has not been completed as yet, hence the delay in this very special project. Definite details will be forthcoming as soon as arrangements can be completed.



THE PHOTOS SHOWN ON THIS PAGE ARE OF THE DISPLAY TABLES PRESENT AT THE QUARTERLY MEETING.
"SHOW AND TELL ITEMS ARE ALSO INCLUDED. (photos provided courtesy of David Rankin)



MOUNT VERNON



111—5½ in. 2 Lite Candelabrum
(No. 19 Bobeches & 16 No. 1—2½ in. Prisms)



86—Sugar & Cream



150—10½ in. Ftd. Cake Salver



1607—9 in.
Hurricane Lamp



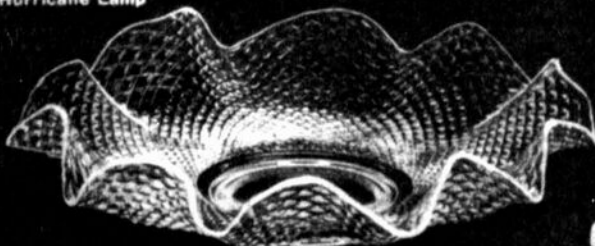
1612—9½" 1 Lite Candelabrum
(29 bobeches—10 No. 10 prisms)



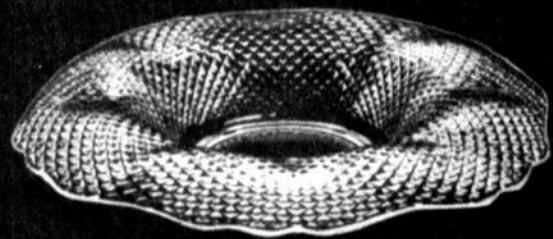
131—4½ in. Candelabrum
(No. 27 Bobeche & 6 No. 4 Prisms)



110—5 in. 2 Lite
Candlestick



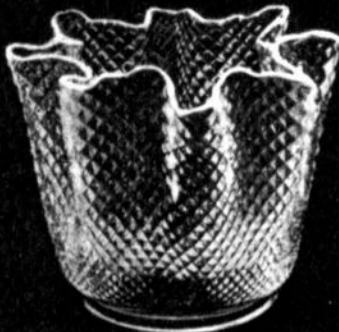
116—13 in. Shallow Bowl, Crimped



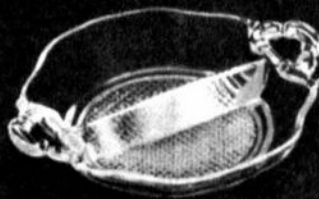
117—12 in. Rolled Edge Bowl, Crimped



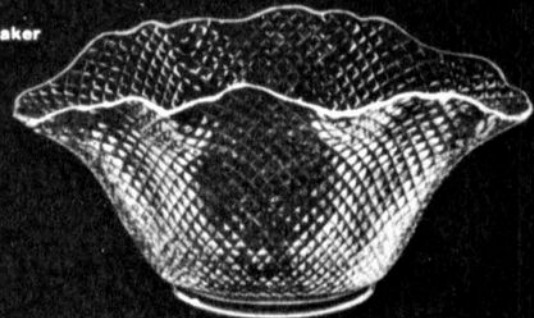
88—Salt & Pepper Shaker
(Glass Top)



119—6 in. Bowl or Vase, Crimped



106—6 in. 2 Hdl. 2 Part Relish



118—12 in. Oblong Bowl, Crimped

UNIQUE LADIES ??

by Phyllis Smith

Something just a little bit different, or perhaps "unique" would be a better word, has surfaced for us to speculate on for awhile.

The two photo's shown below, show an 8½" Draped Lady (#518) Figure Flower Holder, in gold krystal. But if you will notice, she is a bit different from all the other Ladies we have seen, since she is in two pieces. Evidently she has been cut out of her flower ring and polished so she'll fit down into the ring and sit flat on a table or in a bowl, such as the case may be.



This particular Lady is owned by Shirley and Austin Hartsock from Maryland, and was purchased recently from Connecticut.

Some additional facts that make this information just a bit more interesting was the discovery at our Quarterly Meeting that Chester and Noami Gamble from here in Ohio, have recently purchased three similar Ladies. The difference being the fact that their Ladies do not have the flower holder rings.

All three of their Ladies are in the dark pink color. Two of them are the 13" (#513) Draped Lady and the third one is the Two-Kid (#509) Flower Holder. Their Ladies were purchased in Ohio from a man whose parents had been employed by the Cambridge Glass Company many years ago.

It is easy to imagine all types of explanations concerning these Ladies, the easiest being that they were mistakes that were ground down and taken home by the workers. Or they could have been made intentionally for use as lamps. But whatever the reason, they are unique and one more interesting bit of information for us to ponder.

If there are still other Ladies living with any of our members, please let us hear from you concerning their color and style.

? Question ?

How many of you watched "THE STING" on T-V a few weeks ago? How many of you noticed the two Crown Tuscan Flying Lady bowls sitting on the bar in one scene and a Carmen one in a later scene?

Please write and let us know!

Janice Hughes
Secretary

*One way to break a bad habit
is to drop it.*

BOOKS FOR SALE

All of the available reference books relating to Cambridge glass can be ordered directly from the Club.

Address your orders for any of the following to:

BOOKS
National Cambridge Collectors, Inc.
P. O. Box 416
Cambridge, Ohio 43725

Please add \$1.00 (P & I) on each book order.
(Not required for Price List only orders)

Ohio residents please add 4½% State Sales Tax.

by National Cambridge Collectors, Inc.

1949 - 1953 CAMBRIDGE GLASS CO. CATALOG REPRINT
(300 page reprint of original catalog)
Hardbound with Price Guide \$14.95

1930 - 1934 CAMBRIDGE GLASS CO. CATALOG REPRINT
(250 page reprint of original catalog)
Hardbound with Price Guide \$14.95

1978 PRICE GUIDE
for 1930-1934 catalog reprint \$2.00

by Mary, Lyle, and Lynn Welker

CAMBRIDGE GLASS CO.
(120 pages of reprint from 8 old catalogs) \$6.95

CAMBRIDGE GLASS CO. BOOK II
(119 pages of reprint from old catalogs) \$6.95

CAMBRIDGE, OHIO GLASS IN COLOR II
(15 color plates w/ descriptions and notes) \$5.95

by Harold and Judy Bennett

THE CAMBRIDGE GLASS BOOK
(96 pages with 59 color plates)
Paperback \$8.95

1903 CAMBRIDGE GLASS CO. CATALOG REPRINT
(106 page reprint of an original catalog) \$7.50

by Charles and Mary Alice Upton

1979 PRICE GUIDE to the CAMBRIDGE GLASS BOOK
(Prices for each item in Bennett book) \$2.00

1958 catalog

By order of your Board of Directors, the 1958 Catalog distributed by the reopened (1955-1958) Cambridge Glass Company will be reproduced in the CRYSTAL BALL.

Beginning with this issue and continuing for the next 39 months, this 1958 catalog will be reproduced in its entirety at the rate of four (4) pages per month.

These pages will be run in sequence exactly as they appear in the original catalog and will be situated in such a manner as to be easily removed and assembled into a complete catalog at such time as our members would so desire.

Consideration has been given to distributing a cover and indexing (dividers) pages for this catalog, but a definite decision will be reached by your Board of Directors at a later date.

Most sincere thanks and appreciation are hereby extended to Mr. Tom Mosser, Mosser Glass Company, Cambridge, Ohio, for his generosity in sharing this 1958 catalog with N.C.C.

STUDY CLUB??

The following members are interested in forming a Study Group in their area. If you share a similar interest, please get in touch with the member nearest you.

Virginia Dutcher, Hide-A-Way Hills, Ohio.
Joyce Dawson, Oregon.

JoAnne Wegman, Cleveland, O. 216-351-0799.

Raymond W. Pyle, Mentor, Ohio.

Shirley Ladouceur, Central New York,
Syracuse or Rochester.

Kenneth Cook, North Central Indiana,
219-653-2511.

Beverly Hanson, California.

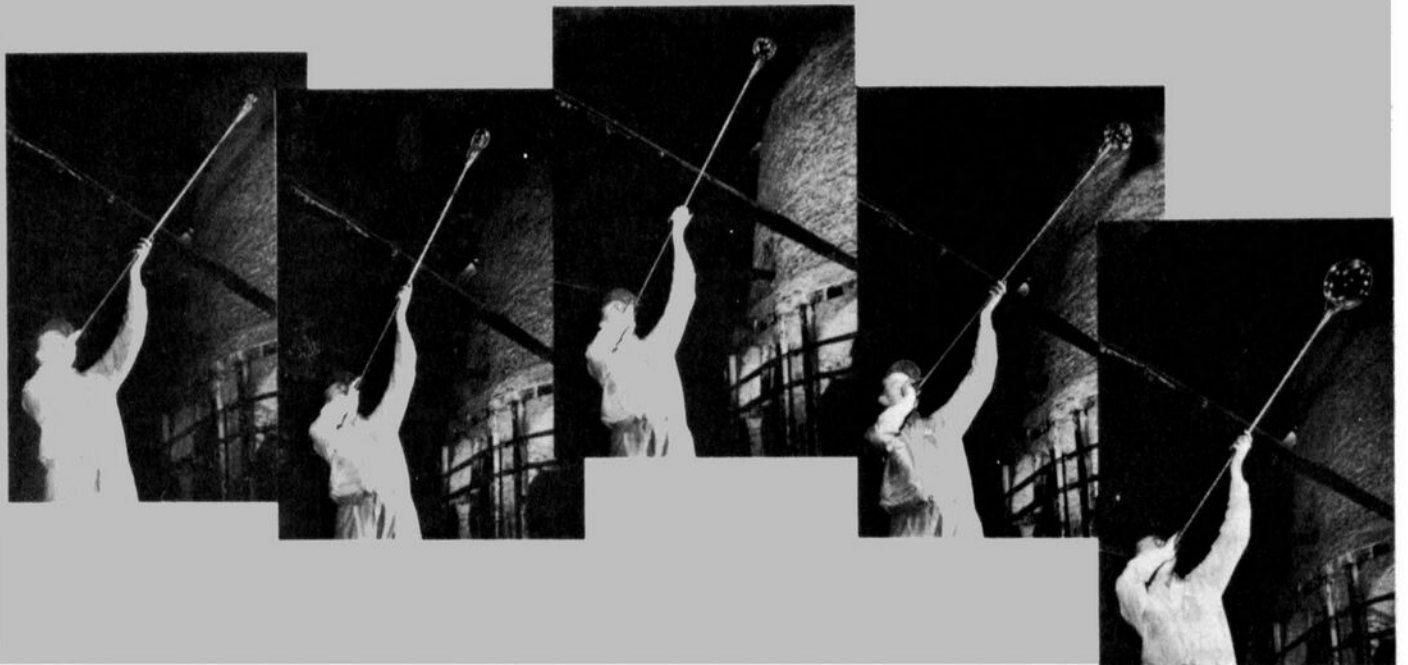
John Grubb, Williamsburg, Virginia.

Clara K. Brown, Burton/Flint, MI. area.

Please send your inquiries c/o N. C. C.,
P. O. Box 416, Cambridge, Ohio 43725.

Fine handmade
table glassware

by



THE CAMBRIDGE GLASS COMPANY, CAMBRIDGE, OHIO, U. S. A.

Alphabetical Index

Accessories	148	Modern	152
Achilles	89	Mt. Vernon	127
Adonis	95	Old English	116
Allegro	124	Old Master	116
Ardsley	91	Orion	113
Arlington	131	Paisley	74
Aurora	123	Pristine	26
Barsemble	119	Punch Sets	50
Bexley	90	Queen Mary	145
Blue Danube	117	Regency	128
Cadet	107	Rondo	102
Cambridge Arms	69	Rose Point	78
Cambridge Rose	91	Gold Edge	158
Cambridge Square	6	Gold Encrusted	158
Candelabra	62	Roses	94
Candlesticks	60	Roxbury	99
Caprice	14	Salt-Pepper	64
Cascade	122	Simplicity	144
Castleton	125	Smokers' Items	46
Chantilly	76	Sonata	36
Charleston	130	Star	107
Connoisseur	132	Starburst	115
Corinth	20	Starlite	115
Croesus	95	Sugar-Cream	64
Crown	113	Swans	53
Danube, Blue	117	Tempo	98
Decanters	48	3109 Line	136
Dunkirk	138	3121 Line	139
Epergnés	54	3139 Line	140
Festoon	117	3779 Line	141
Flame	114	3600 Line	142
Flight	114	3625 Line	143
Floral Arrangers	59	Today	134
Formal	118	Tomorrow	94
Gadroon	129	Triumph	154
Georgian Line	39	Trumpet	137
Gifts	40	Tumblers	56
Glendale	112	Vases	66
Harvest	110	Victory	153
Heirloom	133	Wedding Band	156
Invitation	135	Wedding Rings	96
Jefferson	126	Wildflower	79
King Edward	92	Gold Edge	158
Laurel Wreath	104	Gold Encrusted	158
Lynbrook	108		

Index

PATTERNS, PLAIN

Cambridge Square	6, 7, 8, 9, 10, 11, 12, 13
Caprice	14, 15, 16, 17, 18, 19
Corinth	20, 21, 22, 23, 24, 25
Pristine	26, 27, 28, 29, 30, 31, 32, 33, 34, 35
Sonata	36, 37, 38

MISCELLANEOUS

Candelabra	62, 63
Candlesticks	60, 61
Decanters	48, 49
Epergnes	54, 55
Floral Arrangements	59
Georgian Line	39
Gifts	40, 41, 42, 43, 44, 45
Punch Sets	50, 51, 52
Salt-Pepper-Cream-Sugar	64, 65
Smokers' Items	46, 47
Swans	53
Tumblers	56, 57, 58
Vases	66, 67, 68

CAMBRIDGE ARMS

69, 70, 71, 72

ETCHED DESIGNS

Chantilly	76, 77, 79, 81, 83, 84, 85, 86, 87
Paisley	74, 75
Rose Point	78, 79, 81, 82, 83, 84, 85, 86, 87
Wildflower	79, 80, 81, 82, 83, 84, 85, 86, 87

ROCK CRYSTAL, ENGRAVED

Achilles	89
Adonis	95
Ardley	91
Barsemble	119
Bexley	90
Blue Danube	117
Cadet	107
Cambridge Rose	91
Croesus	95
Crown	113
Festoon	117
Flame	114
Flight	114

Formal	118
Glendale	112
Harvest	110, 111
King Edward	92, 93
Laurel Wreath	104, 105, 106
Lynbrook	108, 109
Old English	116
Old Master	116
Orion	113
Rondo	102, 103
Roses	94
Roxbury	99, 100, 101
Star	107
Starburst	115
Starlite	115
Tempo	98, 100, 101
Tomorrow	94
Wedding Rings	96, 97

STEMWARE, PLAIN

3109 Line	136
3121 Line	139
3139 Line	140
3600 Line	142
3625 Line	143
3779 Line	141
Allegro	124
Arlington	131
Aurora	123
Cascade	122, 123
Castleton	125
Charleston	130
Connoisseur	132
Dunkirk	138
Gadroon	129
Heirloom	133
Invitation	135
Jefferson	126
Mt. Vernon	127
Queen Mary	145
Regency	128
Simplicity	144
Today	134
Trumpet	137

ACCESSORIES for Cambridge Arms, Candelabra, Epergnes, Hurricane Lamps

148, 149

GOLD & PLATINUM DECORATIONS

Modern	152
Rose Point — Gold Edge	158, 159
Rose Point — Gold Encrusted	158, 159
Triumph	154, 155
Victory	153
Wedding Band	156, 157
Wild Flower — Gold Edge	158, 159
Wild Flower — Gold Encrusted	158, 159

*There is hardly anything in the world
that some man cannot make a little worse
and sell a little cheaper, and the people
who consider price only are this man's
lawful prey.—JOHN RUSKIN*

Club News

continued from page 2

Study Groups. Study Group #3 in Broward and Dade Counties, Florida with 9 members; Study Group #4 (Cambridge Arms) in the Cleveland, Ohio, area with 5 members; and Study Group #5 in Southern California with 20 members. She then introduced Lynette Frederick and Jo Anne Wegman from the Cleveland Study Group.

MUSEUM: Chairman Arnold Lynd reported the AT&T proposal is not feasible at this time. The A. J. Bennett property is for sale and his committee will inspect it on Monday, November 13th.

AUCTION: Chairman Lynn Welker reported the Auction will be the first weekend in March, 1979, at the Holiday Inn in Cambridge. Craig Connelly will be the Auctioneer. All instructions will be in the December CRYSTAL BALL.

President Smith then recognized the other Board Members present, Jack Rettig, Frank Wollenhaupt and Ruby Landman.

President Smith introduced Don Armbrecht from Avon Lake, Ohio, as the new Board member to fill the vacancy created by the resignation of David McFadden. He then advised that Doris Isaacs, Board member and Treasurer would be resigning soon as she will be moving to California.

OLD BUSINESS

None.

NEW BUSINESS

Phyllis Smith advised she had free copies of the Depression Glass Daze for anyone interested and that the Editor had offered new subscriptions to N.C.C. members at a discount.

Arnold Lynd auctioned off three Decagon plates with #731 etching in green enamel for the Cambridge Squares Study Group. Purchasers were Don Armbrecht, Mrs. U. D. Rankin and John Woellert.

President Smith introduced Charles Upton, Program Chairman. He introduced David

Rankin, who showed slides of candlesticks and Lynn Welker, who did the narration. Frank Wollenhaupt then showed slides of the 1978 Display Room.

Dave Rankin and Charles Upton described the items on the Show and Tell table.

Janice Hughes reported two stems had been donated to the Museum by Mr. & Mrs. Floyd L. Hoffman of Tarrytown, N. Y., and a Cordial by Mr. George Hoffman, Newark, Ohio.

President Smith reminded the Board members of the next meeting on December 10th in the home of Margaret Cohagen.

A motion was made by Frank Wollenhaupt to adjourn at 9:50 PM.

Janice Hughes
Secretary

STUDY Club News

The Cambridge Squares Study Group met at the home of Gerald and Jo Barstow on October 8th. There were eight members and one guest present.

The topic for discussion was Farber Decanters, with 10 different styles on display. The Study Group will attempt to feature "decanters" in CRYSTAL BALL articles. (After we learn how to take a decent picture.)

Nine new goblets for the Museum were displayed.

Show & Tell items included a #2503 5" jelly compote; a toothpick holder (?); 3400 Line bitters bottle in amethyst with porcelain stopper; 32 oz. Pristine #101 cocktail shaker; and an 8" optic rose bowl.

The next meeting will be at the home of Lena Barnes on November 12th. The topic for discussion will be on paperweights and Near Cut decanters.

submitted by Janice Hughes

Vickie McCartney

P. O. Box 644
Flagler Beach, Florida 32036

Phone: 904-445-3737

1. 3500/67 - 12" Diane, 6 pc. relish, Gadroon line, crystal _____ \$ 40
2. 3500/15 - Rosepoint, ind. cream & sugar, Gadroon line, crystal _____ \$ 25
3. Caprice, cream & sugar on 8" tray, crystal _____ \$ 15
4. Decagon #877 - 11½" comport, green with Cleo etching _____ \$ 23
5. #1105 - 34 oz. cocktail shaker, green with Cleo etching (no top) _____ \$ 20
6. Georgian tumblers, amber, 9 oz. (15) _____ each \$ 6

MAIL BIDS - Bids close December 15, 1978!

1. Green Carnival, 10" crimped, Inverted Strawberry bowl, marked Near Cut.
2. Crystal Seagull Flower Holder, 10".
3. Pair cry. 6½" Calla Lilly Candleholders.
4. Crystal Nude Stem w/amethyst Bud Vase (Bennett-44-1). (2)

POSTAGE AND INSURANCE EXTRA!



The folks who live
at our house
are joining in to say.....

'We wish the folks
at your house
a Happy Holiday'



The Smiths
Bill, Phyllis
Ed and Mark

Classified

FOR SALE: CROWN TUSCAN - #3400/91 3-hdd. 3-compt. relish w/gold trim \$16. #3500/57 3-compt. candy and cover, w/gold trim \$35. Seashell 7" comport w/lake scene, roses, gold Charlton label \$70. Seashell #49, 10" belled vases w/Charlton (barber pole) blue roses and gold \$160 pr. Seashell 14" plate with 16 small and 1 large spray of Charlton roses in center. Much gold \$105. WANTED: All Rubina, Sunset and Rock Crystal engraved #541. R. Pyle, 7295 Maple St., Mentor, Ohio 44060 - 216-255-6001.

WANTED: Anything in CAMBRIDGE WILDFLOWER etching. Any color or type of decoration. Send description and price to: Virginia Dutcher, R.R.#1, Box 21, Hide-A-Way Hills, Ohio 43107.

WANTED: CAMBRIDGE DECAGON, etched #731 (Rosemary?), light emerald green. Shown in Welker I, page 85. Need open sugar shown in Weatherman's II, page 39 at bottom. Any pieces pattern #731 or plain would be considered. Also Decagon pink and blue plain or any pattern would be considered. Mint pieces only. Judy Barnes, Route #2, Oswego, Kansas 67356.

WANTS TO BUY: Deep Etched "MARJORIE" by Cambridge. Walt Brammer, 9700 Upton Road, Bloomington, Minnesota 55431.

MUDDLERS

MUDDLERS

WANTED

CAMBRIDGE MUDDLERS - ESPECIALLY #3
also

COLORED OLD-FASHIONED GLASSES MARKED CAMBRIDGE

Describe and price first letter. _____

_____ All letters answered!

Henry Ziegler

174 South Mountain Drive
New Britain, Ct. 06052

MUDDLERS

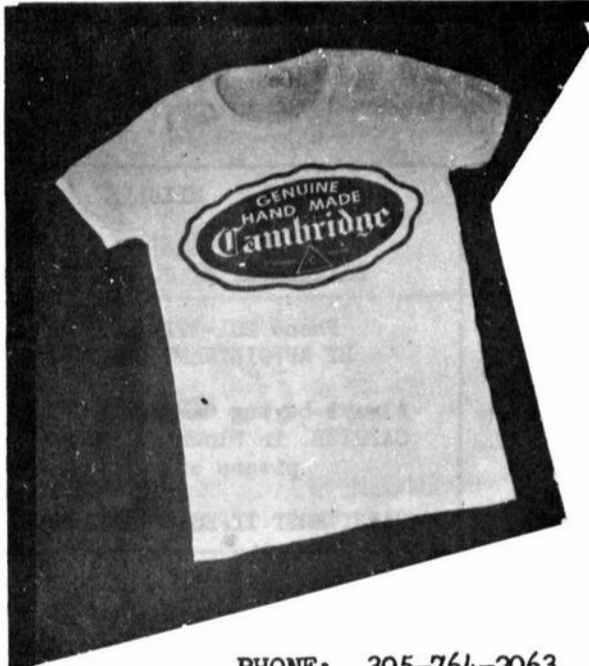
MUDDLERS

DEALERS



DIRECTORY

<p>ANTIQUÉ ALLEY 24815 Broadway Bedford, Ohio 44146 216-232-7739 --- Marie Spagnola CAMBRIDGE GLASS ROYAL DOULTON</p>	<p>BENICIA ANTIQUE SHOP 305 First Street Benicia, California 94510 OPEN 11 AM - 5 PM Closed Monday Z. E. LOPES - 707-745-0978 VISIT HISTORIC BENICIA and its 28 shops Off Interstate #80 --- --- North of San Francisco</p>	<p>CHARLES MIKULIK Box 416 Elizabeth, N. J. 07207 Phone 201-372-1101 BY APPOINTMENT ONLY! Always buying CAMBRIDGE BLUE CAPRICE in blown or unusual pieces only. CARRY MOST TYPES OF ANTIQUES</p>
<p>CHURCH STREET ANTIQUES 6 Church Street Boston, Massachusetts 02116 George or Frank --- 617-426-1048 CAMBRIDGE, HEISEY, GENERAL LINE</p>	<p>GREEN ACRES FARM 2678 State Route 310 North Pataskala, Ohio, 43062 Sat. & Sun. 1-6 PM --- W. Bryan CAMBRIDGE & HEISEY - 614-927-1882</p>	<p>FINDER'S KEEPER'S ANTIQUES P.O. Box 303 P.O. Box 16023 Dayton, O. Columbus, O. 45401 43216 513-254-2937 614-965-1906 SPECIALIZING IN CAMBRIDGE GLASS!</p>
<p>D & D ANTIQUES 184 East Kossuth Street (GERMAN VILLAGE) Columbus, Ohio 43206 DICK SLIPKO --- 614-443-6020</p>	<p>THE MOUSE HOUSE ANTIQUES Route 22 East Cambridge, Ohio 43725 Shirlee Bistor --- 614-432-3132 SPECIALIZING IN GLASSWARE!</p>	<p>HOBBY HOUSE ANTIQUES Rt. #1, Cambridge, Ohio - 43725 614-432-6971 - Frank & Lena Take Rt. #209 W. From Cambridge To RT. #658 - NORTH 1½ MILES</p>
<p>SWISS HILLS COLLECTIBLES Mary & Wilbur Henderson 303 Guilford Avenue Woodsfield, Ohio 43793 Shows Only --- 614-472-1133 SPECIALIZING IN CAMBRIDGE GLASS!</p>	<p>GEORGE HOFFMAN ANTIQUES 129 South 4th Street Newark, Ohio 43055 --- 614-345-8550 ---</p>	<p>D'MARIE'S ANTIQUES US Rt. 1 - just South of Rt. 606 Thornburg, Virginia 22565 703-582-6220 --- Jim Rankin OPEN EVERY DAY 10 AM to 6 PM</p>
<p>THIS 'N' THAT PLACE 101 South Street Chagrin Falls, Ohio --- 44022 Lue Koerper --- 216-247-4938 OPEN THURS.-SAT. --- 10 AM - 5 PM</p>	<p>OLD TOLL GATE ANTIQUES Route #5, Box 7X Milan, Illinois 61264 SPECIALIZING IN HAVILAND CHINA MATCHING SERVICE</p>	<p>OLDE TOWNE ANTIQUES 307 W. St. Louis Street Lebanon, Illinois 62254 Edith Zimmerman --- 618-537-4567 GENERAL LINE ANTIQUES</p>
<p>'OUR GLASS ANTIQUES Box 27, Wills Point, Tex. 75169 20th CENTURY COLLECTIBLES fea- turing CAMBRIDGE GLASS! Shows- No Lists - SASE Please - PAUL & GINNY HENDERSON --- 214-563-6971</p>	<p>Use Schleigers book numbers or send saucer for pattern match. SASE APPRECIATED Marie Baker --- 309-787-2392 GENERAL LINE OF ANTIQUES</p>	<p>WOLFE'S GLASS EMPORIUM 330 Woodlawn Avenue Cambridge, Ohio 43725 OPEN BY APPOINTMENT - JOHN WOLFE 614-432-2590 OR 614-262-9353</p>
<p>S & J ANTIQUES 5616 Hensel Woods Road Gahanna, Ohio 43230 Sue & Jack Rettig - 614-855-1711 CAMBRIDGE GLASS OUR SPECIALITY</p>	<p>THE GLASS CUPBOARD 39 Shire Oaks Drive Pittsford, New York 14534 Marcia Ellis 716-586-7596 CAMBRIDGE ONLY --- SASE FOR LIST</p>	<p>M & M ANTIQUES & COLLECTIBLES 310 N. Main - Box 417 Canton, Kansas 67428 The Martin's --- 316-628-4705 SPECIALIZING IN CAMBRIDGE GLASS!</p>
<p>KILPATRICK'S ANTIQUES (Lu, Dort and Pat) S. E. Corner Public Square Troy, Ohio 45373 Res. (513) 335-1798 Shop 339-8754 WE BUY ONE PIECE OR COLLECTIONS!</p>	<p>EVELYN M. ALLEN 135 Cynthia Street Heath, Ohio 43055 Mail Order & Shows 614-522-1635 SPECIALIZING IN CAMBRIDGE GLASS!</p>	<p>YOU CAN ADVERTISE YOUR ANTIQUÉ SHOP HERE! 1 inch - \$6 for six months</p>
<p>YOU CAN ADVERTISE YOUR ANTIQUÉ SHOP HERE! 1 inch - \$6 for six months</p>	<p>YOU CAN ADVERTISE YOUR ANTIQUÉ SHOP HERE! 1 inch - \$6 for six months</p>	<p>YOU CAN ADVERTISE YOUR ANTIQUÉ SHOP HERE! 1 inch - \$6 for six months</p>



T Shirts by Brandt

AN IDEAL GIFT FOR THE CAMBRIDGE COLLECTOR
A YELLOW T-SHIRT WITH A BLACK CAMBRIDGE SEAL!

FIRST QUALITY — SPECIAL \$7.50 each
(includes postage and handling)

The T-Shirt you saw at the Cambridge
Convention is now available in men's and
women's sizes!

PHONE: 305-764-2063

ORDER NOW: Send your check or money order (\$7.50 for each shirt) to:

T-Shirts by Brandt, 1305 N. W. 1st Avenue, Fort Lauderdale, Florida 33311

Please specify size when ordering: WOMEN: sm., med., lg. MEN: med., lg., x-lg.

Notice

All advertising, articles, and
Study Group information to be
included in the February, 1979
issue of the CRYSTAL BALL must
be in our hands no later than

← JANUARY 5, 1979!!! →

National Cambridge Collectors, Inc.
Post Office Box 416
Cambridge, Ohio 43725

FIRST-CLASS MAIL
U.S. POSTAGE
PAID
So. Vienna, Ohio
45369
Permit No. 15

FIRST CLASS MAIL



Best wishes
for the holidays!



*The
Crystal Ball
Index*

ISSUE #1 (May 1973)
thru
ISSUE #68 (December 1978)

National Cambridge Collectors, Inc.

By Luene B. Brandt
1979

AUTHOR/TITLE/TOPIC	ISSUE	PAGE	AUTHOR/TITLE/TOPIC	ISSUE	PAGE	AUTHOR/TITLE/TOPIC	ISSUE	PAGE
ADAMS, John M.			Martha	33	14	Bunny Box		
"Cambridge Carnival Glass"	57	3	Martha Washington	17	4	Picture	6	4
ADVERTISEMENTS Reproduced				20	4	Description	36	11
from catalogs and magazines			Maryland Rock Crystal	65	7	Butterfly - novelty figures ...	25	6
Apple Blossom etching	39	6	Moss Rose Nearcut	27	5	Cat Bottle - reproduction	29	6
Art Glass	28	5	Mt. Vernon	43	7	Cockatoo - flower holder	34	4
	29	5	Narcissus Vase	47	9	Dog Bottle - reproduction ...	29	6
Ashtrays	43	7	Nautilus	20	7	Dragon		
	46	10		47	11	Etching, description	3	6
Ashtrays, Stacking & Star ...	58	14	Nearcut #2658 (mugs)	21	5	Etching, picture	43	6
Bathware	42	8	Nearcut #2699 (Epergne)	30	6	Eagle		
Bennett (juicer)	23	6	Paul Revere Nearcut	22	7	Bookend	31	10
Blue Willow etching	29	5	Peacock Nearcut	7	6		66	9
Bordeaux etching	27	5	Perry Rock Crystal	46	12	Flower holder	34	4
Bookends	31	7	Portia etching	38	8	Figurals - color charts	58	10
Brettone etching	41	4	Radiant Rose Rock Crystal	57	11	Flower Holders - color chart .	61	11
Bridge Set	30	17	Ribbon Nearcut	17	5	Frog		
Buzzsaw Nearcut	30	6	Rock Crystal, 8 cuttings	65	6	Novelty figures	25	6
Cambridge, Christmas Greeting	32	8	Rock Crystal, 6 cuttings	65	7	Reproduction	29	6
Cambridge Arms	60	8	Roxbury Rock Crystal	65	6	Heron - flower holder	41	5
Candlelight etching	22	3	Rosepoint etching	20	6	Lion - bookend	66	9
	60	13		41	3	Monkey Lamp		
	61	10	Sea Shell	61	10	Description	3	7
Candy Bottle	5	7		26	8	Picture	53	4
Candy Box	30	17	Shaving Set	31	7	Owl Lamp		
Caprice	65	7	Statuesque (nude stem)	42	6	Picture	1	10
Chantilly etching	61	10	Stems	41	3	Description	3	7
Chelsea	27	4		46	12		29	4
Chesterfield Rock Crystal ...	43	3	Stradivari (Regency)	58	14	Picture	52	6
Cleo etching	26	7	Swans	40	8	Peacock		
	36	12	Tempo Rock Crystal	65	6	Etching	3	6
Color (Ebon)	40	7	Toy Mugs	3	6	Nearcut	7	6
Community	26	7		5	7	Pouter Pigeon - bookend	66	9
Cortland Rock Crystal	65	6	Tumblers	41	4	Scotty Dog		
Cranston Rock Crystal	43	3	Unknown Cutting	26	6	Bookend	58	14
Daffodil etching	65	13	Vase #2374	30	17		66	9
Daisy Nearcut	24	10	Vesta Rock Crystal	43	3	Decoration	41	4
Decanters (whiskey)	33	7	Virginian	40	7	Seagull		
	49	10	Weatherford	29	5	Flower holder	52	10
Decorations	28	4	Whitehall Rock Crystal	43	3		59	11
Deerfield Rock Crystal	65	6	Windsor etching	40	4	Squirrel		
Desk Set	31	7		45	10	Novelty figures	25	6
Diane etching	39	11	Ye Ole Ivy etching	45	10	Reproduction	29	6
	61	10	#3078 (beverage set)	54	13	Swan		
Dover Rock Crystal	65	6	ALADDIN - Crown Tuscan ...	23	10	Article w/pictures	36	5
Epergne	58	14	ALLEN, Evelyn			Collection	24	7
Etta etching	27	5	"A Little About Making Glass"	16	4	Picture	40	8
Farberware (4 pages)	60	9		17	7		44	12
	64	13	"How It Began"	1	2	Reproduction	23	3
Fluerette Rock Crystal	65	6	Membership Report	16	2		28	6
General (gift ideas)	58	14	... see Club News, "Profiles"			Turkey		
Gift to Clark Gable's			... see Club News, "Let's Get			Confusion	64	7
(news item)	31	9	Acquainted"			Rankin article	44	6
Glendale Rock Crystal	65	6	ALLEN, Harry & Evelyn			Rettig article	38	5
Gloria etching	41	8	"Why Do We Collect Cam-			Upton article	10	2
Hanover Rock Crystal	65	7	bridge Glass?"	10	6	Turtle		
Ice Tea Set	27	5	ANIMALS			Flower holder	35	8
Ivy Ball	58	14	Birds			Flower holder picture	64	4
Keg Set (whiskey)	29	4	Novelty figures	25	6	ANTIQUÉ SHOW		
King Edward Rock Crystal ..	43	3	Reproductions	35	3	... see Club News		
	65	7	Blue Jay - flower holder	60	6	APPLE BLOSSOM		
Lamps (Nearcut)	24	10	Bridge Hound			... see Etchings		
Larchmont Rock Crystal	65	6	Reproduction	19	2	ART GLASS		
LaTouraine Nearcut	25	4	Favors	23	11	Picture	28	5
Lexington Rock Crystal	46	12	Novelty figures	25	6		29	5
	65	7	Picture	54	7	Trademark	29	2
Lucia Rock Crystal	61	10				ASHTRAYS		
Lynbrook Rock Crystal	51	7				Advertisement	43	7
Manor Rock Crystal	65	7						
Marjorie Nearcut	22	7						
Marjorie etched	26	7						

AUTHOR/TITLE/TOPIC	ISSUE	PAGE	AUTHOR/TITLE/TOPIC	ISSUE	PAGE	AUTHOR/TITLE/TOPIC	ISSUE	PAGE
Caprice	46	10	Eagle - advertisement	31	10	Room	54	1
Nude stem	44	10	Lady Legs - NCC Commemorative	56	4	Decorating Department	3	1
Pictures	42	6	Reissue	64	13	Decorating Department - E. Side View	57	1
Reproduction	32	9	Scotty Dog - advertisement ..	58	14	Factory	1	4
"A SUPREME NOVELTY" (Turkey) by Dave Rankin ..	44	6	"BOOK IS DELIVERED" by Bill Smith	39	7	Factory - today	11	7
AUCTION INFORMATION ..			BORDEAUX ... see Etchings			Furnace Room Workers ...	6	1
..... see Club News			BRANDT, Luene and Dick ..	63	5	Grinding Department	67	1
AUDITOR'S REPORT			BRETTONE ... see Etchings			Mold Cleaning Shop - Section E.	8	1
..... see Club News			BRIDGE HOUND see Animals			Mold and Machine Shop ...	9	1
AURORA STEM #1066			BRIDGE SET - advertisement	30	17	New York Display Room ..	5	3
..... see "Stems"			BUDGET - proposed	5	8
AWARDS see Club News			Officers and Directors	2	4
BARNES, Lena			"BUFFALO HUNT SCENE" Everglades by Russel Vogelsong	52	11	Pressing Oil Bottles	65	1
..... see "Letters From Lena"			BULLFROG see Animals, Frog			Section of Shipping Dept. ..	7	1
BARREL SET (Keg Set)	29	4	BUNNY BOX ... see Animals			Selecting Room	6	8
BARSTOW, Jo			BUTTERFLY see Animals			Shop Making Caster Place .	64	1
"Open Letter to the Membership"	54	6	BUZZ SAW see Nearcut			CAMBRIDGE GLASS		
"Membership Report"	56	12	BY-LAWS AMENDMENTS ..			Discontinued	19	4
.....	60	14 see Club News		 see "Is It Cambridge"		
see Club News, "Let's Get Acquainted"	62	11	CALLA LILLY - reproduction	24	6	"CAMBRIDGE GLASS COLLECTORS HOLD GATHERING HERE" by Rose McAfee	63	4
BASHFUL CHARLOTTE ...			"CAMBRIDGE??" by Phyllis Smith	54	3	CAMBRIDGE MOLDS	31	5
..... see Flower Holders			CAMBRIDGE ARMS			"CAMBRIDGE NEARCUT CARNIVAL" by Russell Vogelsong	59	3
BASKETS - Nearcut	36	4	Advertisement	60	8	CAMBRIDGE PORTIERE ...	54	11
BATHROOM BOTTLES	36	8	Catalog Reprint	50	8	"CAMBRIDGE RAINBOW" by Lynn Welker . see Colors		
BATHWARE - advertisement .	42	8	51	9	"CAMBRIDGE RUBINA" by Russell Vogelsong		
"BEAWARE OF REISSUES" by Bill Smith	64	13	52	9 see Colors		
BELLS	66	10	Reproduction	53	9	CAMBRIDGE SIGN		
BENNETT, Arthur J.			CAMBRIDGE ART GLASS .			Advertising item	31	4
Coach House Manor Dedicated	5	7 see Art Glass			CAMBRIDGE SQUARE -		
Picture	6	6	CAMBRIDGE CARNIVAL GLASS	2	5 see Pressed Patterns		
News article	45	4	"CAMBRIDGE CARNIVAL GLASS" by John M. Adams	57	3	"CAMBRIDGE SQUARE BY IMPERIAL" by Gwen Shumpert	53	6
.....	61	1	by Charles Upton	11	7	CAMBRIDGE SQUARES STUDY CLUB see Club News		
BENNETT, Harold - Museum	3	10	"CAMBRIDGE CARNIVAL NEARCUT" by Russell Vogelsong	59	3	"CAMBRIDGE SWANS" by Frank Wollenhaupt	36	5
BENNETT JUICE EXTRACTOR			CAMBRIDGE COLORS			CAMPBELL, Gary and Mona "Where To Begin"	16	3
..... see Nearcut		 see Colors			CANDLEHOLDERS -		
BETTY			"CAMBRIDGE CONNOISSEUR" by Doris Isaacs	62	6	Pictures, etc.		
BIG X PITCHER	2	4	by Karen Isaacs	48	5	Calla Lilly - reproduction ...	24	6
.....	3	3	CAMBRIDGE FIGURALS COLOR CHART	58	10	Cambridge Arms		
.....	52	3	CAMBRIDGE FIGURAL FLOWER HOLDER COLOR CHART	61	11 see Cambridge Arms		
BINKLEY, Pat			CAMBRIDGE GLASS CO.			Cambridge Centerpieces	60	8
"Flowers & Frogs"	59	10	History			Cambridge Square	53	6
BIRDS			Circular Letter #183	20	5	Candelabra	48	11
BLOCK OPTIC see General History			Candelabrum #1441	33	11
..... see Pressed Patterns		 see Pioneering in Quality			Candelabrum #1268, #1274 .	6	3
BLOSSOMTIME see Etchings		 see Touch of History			Candlesticks, Candelabra, Epergnes and Epergnettes ..	67	8
BLUE JAY			Photos			Candlesticks - Quarterly Mtg	68	4
see Animals & Flower Holders			Barrel Making Department	4	3	Caprice	45	8
BLUE WILLOW . see Etchings			Corner of Chicago Display			46	8
BOARD OF DIRECTORS ...						Daffodil Etch on #3900/72 ..	51	5
..... see Club News						Daisy Nearcut #2760	50	12
BOOKS - Catalog Reprints ..						Dolphin - Mt. Vernon foot ..	29	5
..... see Club News, Projects						Dolphin - square foot	58	8
BOOKENDS						68	6
Information	4	3			 continued		
Catalog page - Eagle, Lady Legs, Lion, Pouter Pigeon, Scotty Dog, Tombstone	66	9						
Color Chart	58	10						

AUTHOR/TITLE/TOPIC	ISSUE	PAGE	AUTHOR/TITLE/TOPIC	ISSUE	PAGE	AUTHOR/TITLE/TOPIC	ISSUE	PAGE
Dolphin - two-lite	64	6	Cambridge Arms - 2 pages ..	50	8	CLUB NEWS & INFORMATION		
Doric Column	28	4		51	9	ANTIQUA SHOW		
Epergne	35	12		52	9	HIGHLIGHTS		
Everglades	44	12		53	9	Upton show - 1973	2	9
Farberware	37	7		54	9	Upton show - 1974	13	1
Hurricane Lamp			Cambridge Square	18	6	Upton show - 1975	26	10
Candlelight etching	22	9		53	7	N.C.C. show - 1976	39	10
Rosepoint etching	50	3	Candleholders - 6 pages	67	8	N.C.C. show - 1977	52	5
Hurricane Lamps	67	10	Candlelight etching	22	5	N.C.C. show - 1978	64	3
Martha	33	14	Caprice - 2 pages	44	9	AUCTION INFORMATION		
	63	12		45	7	& RESULTS		
Martha Washington	17	4	5 pages	46	4	Information 1974	16	8
Mt. Vernon	68	6	2 pages	47	7	List & results 1974	18	9
Nude Stem #3011	42	6		48	9	Information 1975	27	7
	57	9	Carmen Items	53	7	List & results 1975	30	7
	67	5	Farberware - Jewelers Catalog			Report 1975	30	4
Plymouth Nearcut #2630	39	12	4 pages	60	9	Information 1976	36	3
Pristine	35	9	Jugs - pitchers - 3 pages	65	10	List (insert) 1976	40	-
Pristine - table architecture ..	61	8	Kitchen Utensils Nearcut-3 pgs.	64	9	Results (insert) 1976	42	-
Sea Shell	58	5	Marjorie Nearcut #2631	16	7	Report 1976	42	4
	67	5		17	10	Information 1977	49	4
Sonata	53	7	Martha - 5 pages	63	9	List (insert) 1977	51	-
	65	5	Martha Washington	17	4	Results (insert) 1977	53	-
Stackaway Set - ashtrays	58	14	Mt. Vernon	68	6	Report 1977	53	4
Star	62	3	Nearcut Cutting #4072	12	5	Information	68	3
Virginian	30	14	Nearcut Design #2508	23	9	AUDITOR'S REPORTS		
	62	9	Nearcut Glass - Award	10	5	1973	13	3
CANDLELIGHT see Etchings			Nearcut Gothic Pattern	66	5	1974-75	26	8
CANDY BOXES AND TOY			Nearcut Specials	47	4	1975-76	39	4
CONTAINERS			Nearcut - Unknown Cutting .	65	9	1976	51	6
Bunny Box	6	4	Nude Stem #3011 - 2 pages ..	57	7	1977	63	6
Cambridge Square	53	6	Pristine - 2 pages	61	8	BOARD OF DIRECTORS		
Caprice	31	3	Rosepoint	4	5	Contest	19	6
	47	8	Sea Shell - 4 pages	58	4	Election Results		
Chelsea	27	4	Sea Shell - crown tuscan - 2 pgs.	67	4	1973-74	1	1
Farberware	60	12	Sonata - 2 pages	65	4	1974-75	13	2
Martha Washington	54	7	Star Candlesticks	62	3	1975-76	26	1
Nude Stem #3011	57	7	Stemware #3500 & #3121 -2 pgs.	55	5	1976-77	39	3
Pristine	53	7	Stratford Pattern	10	4	1977-78	51	8
Pristine w/Daffodil etching ..	51	5	Tally-Ho - 4 pages	59	5	1978-79	63	8
Pristine - apple shape	61	9	Unusual Service Accessories .	59	13	Minutes	14	2
Sea Shell	58	5		61	12	Nominee Resume		
Sonata	65	4	Virginian - 3 pages	62	8	1975	23	12
Toy Containers	3	6	1956-58 Catalog Reprint -			1976	37	4
	5	7	first 4 pages - Index	68	9	1977	49	5
Toy - mug, plate & tray	30	3	CATALOG Reprint (Books)			1978	61	4
Virginian	30	14 see Club News			Resignations & Replacements		
	62	8	CELESTIAL see Rock Crystal			Forsythe	20	3
#580 w/Rose Bud knob	30	17	CENTENNIAL .. see Pressed			Pavlov	31	4
#3500/97 w/Rosepoint etching	50	5	Patterns, Martha Washington			H. Allen	34	6
#3900/165 w/Candlelight etching	22	9	CHANTILLY ... see Etchings			Upton	42	5
#3900/165 w/Rosepoint etching	50	3	CHARLETON DECORATION	53	8	E. Allen	44	5
CAPRICE see Pressed Patterns				54	4	Coyle	48	7
CAPRICE ARTICLES				55	8	McFadden ... Armbrrecht	68	13
.. see "Patterns" by Bill Smith			CHEESE DISH	33	7	Budget - Proposed	20	4
CARNIVAL GLASS see Colors			CHEESE PRESERVER JAR -			BY-LAWS AMENDMENTS		
CARMEN			reproduction	30	15	changes to Art. VI; XII ..	24	4
CARTOONS by Phyllis Smith			CHELSEA			changes to Art. II; III; VI	28	2
"Marko and Puppy"	32	5 see Nearcut			changes to Art. VII	31	10
	34	9	CHESTERFIELD			changes to Art. I; VI; VII	34	2
	35	7 see Rock Crystal			CATALOG REPRINTS		
	36	13	CHINTZ see Projects		
CAT BOTTLE .. see Animals			"CHROME NUDE STRIPS" .			CONVENTION & DISPLAY		
CATALOG PAGES (Reprint)			by Jack and Sue Rettig	59	12	ROOM REPORTS		
Bells	66	10	CLEO			1st Convention 1974	13	4
Bookends	66	9 see Etchings					7
Buzz Saw Nearcut Epergne ..	30	6	"CLUB NEWS"					8
			by John Wolfe	3	5			

continued

AUTHOR/TITLE/TOPIC	ISSUE	PAGE	AUTHOR/TITLE/TOPIC	ISSUE	PAGE	AUTHOR/TITLE/TOPIC	ISSUE	PAGE
1st Convention 1974	10		Feb. 25, 1978	60	3		63	1
		11	June 25, 1978	64	2		64	1
	14	6	Aug. 27, 1978	66	2		65	1
2nd Convention 1975	26	10	Nov. 11, 1978	68	2		66	1
3rd Convention 1976	39	8					67	1
4th Convention 1977	52	5	MUSEUM			"PROFILES" by Evelyn Allen		
5th Convention 1978	63	4 see Bennett, Harold			Robert Coyle	22	1
	64	3	Catalog's acquired	31	4	William Smith	23	14
CONVENTION SCHEDULE OF EVENTS			Donations	55	3	Richard Pavlov	24	7
1974	12	9		66	8	PROJECTS		
1975	24	14	OHIO STATE FAIR REPORT			Books - catalog reprints		
1976	37	10	1975 by Smith	30	19	Catalogs acquired for		
1977	49	6	1976 by Rankin	42	3	museum	31	4
1978	61	6	1977 by Rankin	53	12	1930-34 information	34	1
			1978 by Rankin	65	2		35	3
CONVENTION SPEAKERS							36	2
1974 - Lucile Kennedy	13	4	PRESIDENT'S MESSAGE			1930-34 delivered	39	7
1975 - Eugene Henn	26	10	by Charles Upton	1	1	Price Guide #2	44	3
1976 - William C. Orme ...	39	8		2	1	1949-53 information	51	1
1977 - Robert Coyle	50	13		4	1		53	1
1978 - Gwen Shumpert	61	3		5	1		58	1
				6	2	1956-58 index	68	8
				7	2	Commemorative bookends		
"LET'S GET ACQUAINTED"				8	2	Information	55	1
by Phyllis Smith				9	2	Report	56	4
David McFadden & Frank				10	1	Display signs - masonite ...	28	3
Wollenhaupt	31	6		11	1	Display signs - acrylic	30	18
Charles Upton & Janice				12	2	Plates		
Hughes	32	4		13	4	1st Edition - adv.	1	6
Ed Ruby & Evelyn Allen .	33	6	by Robert Coyle	14	1	2nd Edition - adv.	12	3
Lynn Welker & David				15	1		17	11
Rankin	34	3		16	1		20	7
David Hardesty	35	4		17	1		21	4
John Wolfe	46	9		18	1		23	9
Doris Isaacs	47	3		19	1	2nd Edition - destroyed ...	56	11
John Rettig	48	7		20	1	"Report" by David Rankin .	26	13
Ruby Landman	50	7		21	1	QUARTERLY MEETING REPORTS		
George Hoffman	51	3		23	1	Nov. 10, 1974 by Wollenhaupt	20	9
Josephine Barstow	53	3		24	1	Nov. 23, 1975 by Smith	33	4
Arnold Lynd	56	3		26	1	Aug. 21, 1976 by Isaacs	42	3
Margaret Cohagen	66	3	by William Smith	27	1	Nov. 14, 1976 by Isaacs	44	4
				28	1	Feb. 20, 1977 by Isaacs ...	48	3
MEMBERSHIP				29	1	Aug. 5, 1977 by Smith	53	4
Report by Wolfe	3	5		30	1	Nov. 12, 1977 by Smith	56	4
Information	10	2		31	1	Feb. 25, 1978 by Smith	60	4
Report by E. Allen	16	2		33	1	Aug. 27, 1978 by Rankin ...	66	6
"Letter" from Barstow	54	6		34	1	Nov. 11, 1978 by Smith	68	4
Report by Barstow	56	12		35	1	"REFLECTIONS"		
	60	14		36	1	by Charles Upton	62	4
	62	11		37	1	STUDY GROUP INFORMATION		
MINUTES - ANNUAL & QUARTERLY				39	1	Affiliation information	2	2
Sept. 16, 1973	7	4		40	1	Affiliation requirements	5	1
Dec. 1, 1973	9	7		41	1		26	3
Feb. 10, 1974	11	2		42	1	Information	34	9
April 28, 1974	13	2		43	1	STUDY GROUP REPORTS		
Aug. 25, 1974	18	2		45	1	by #1 - "Hokey Pokeys"	11	3
Nov. 10, 1974	20	2		46	1		15	2
Special Meeting Notice	20	2		47	1		16	2
Feb. 9, 1975	23	2		48	1		17	2
May 4, 1975	26	2		49	1		20	3
Aug. 23, 1975	30	2		51	1		21	2
Nov. 23, 1975	33	2		52	1		22	2
Feb. 15, 1976	35	3		53	1		23	10
June 27, 1976	40	2		54	1		24	2
Aug. 21, 1976	42	9		55	1			
Nov. 14, 1976	45	2		58	1			
Feb. 20, 1977	48	2		59	1			
June 26, 1977	52	2		60	1			
Aug. 5, 1977	53	2		61	1			
Nov. 12, 1977	56	2						

..... continued

AUTHOR/TITLE/TOPIC	ISSUE	PAGE	AUTHOR/TITLE/TOPIC	ISSUE	PAGE	AUTHOR/TITLE/TOPIC	ISSUE	PAGE
by #1 - Hokey Pokeys	25	1		12	3	COYLE, Robert		
	26	3		13	10 see "Collectors Corner"		
	27	2		29	3 see Club News, President's		
	28	7	by Frank Wollenhaupt	14	7 see Club News, "Profiles"		
	30	19		15	4	CRANSTON see Rock Crystal		
	31	10		16	5	CROWN TUSCAN see Colors		
	32	8		17	3	CRYSTAL ART GLASS CO.		
	33	13		18	3 see "Is It Cambridge"		
	34	9		19	3	CUT WILD ROSE see Nearcut		
	35	10		20	9	DAISY		
	36	13		21	3 see Nearcut		
	37	11		22	3	DAFFODIL see Etchings		
	38	2		23	9	DECANTER		
	39	2		24	8 see Advertisements		
	40	10		25	7	DECANTER AND		
	43	2		26	5	TUMBLERS #3078	54	13
	46	2	COLORS			DECORATIONS	28	4
	47	2	Articles on Colors		 see Charleton	41	4
	49	2	by Russell Vogelsong		 see Japonica		
	50	2	Carnival - Nearcut	59	3 see Pomona		
	51	2	Crown Tuscan	67	3	DEERFIELD see Rock Crystal		
	53	11	Rubina and Carmen	65	3	DESK SET	31	7
	56	12	"Cambridge Carnival Glass"			DIANE		
	57	14	by John Adams	57	3 see Etchings		
	58	2	by Charles Upton	11	7	"DISCONTINUED CAM-		
by #2 - "Cambridge Squares"	22	2	"Cambridge Rainbow"			BRIDGE GLASS" by Charles		
	24	3	by Lynn Welker			Upton	19	4
	25	2	All Colors	32	7	DOG		
	30	19	Azurite	33	5 see Animals		
	31	10	Light Emerald Green	36	8	DOROTHY see Nearcut		
	32	8	Mandarin Gold	54	7	DRAGON		
	33	13	Rubina	35	7 see Animals & Etchings		
	34	9	Violet	49	3	DRAPED LADY		
	35	10	Windsor Blue	34	7 see Flower Holders		
	36	13	Caprice Colors	28	6	DRESDEN FIGURE	11	5
	37	11	. see "Patterns" by Bill Smith			EAGLE		
	38	2	Carmen "Cambridge Square"			see Animals & Flower Holders		
	40	10	by Gwen Shumpert	53	7	ELAINE		
	43	2	Carnival Glass Colors	2	5 see Etchings		
	44	2	"Colors In Cambridge"			EMPRESS SHAKER		
	45	9	by Jabe Tarter		 see Nearcut		
	47	2	Amberina	5	6	EPERGNE'S		
	48	12	Black	13	6 see Candleholders		
	49	2	Crown Tuscan	1	8	ETCHINGS		
	53	11	Crown - Yardley	7	3	Apple Blossom	39	6
	55	2	Mardi Gras	9	4	Betty	14	4
	56	11	Rubina	3	4	Bells w/various etchings	66	10
	57	2	Tomato	2	8	Blossomtime	35	8
	60	14	Ebon	40	7	Blue Willow	29	5
	61	2	General Information	3	6	"Legend of Blue Willow" ...	36	9
	62	2		4	2	Bordeaux	27	5
	63	2		5	2	Brettone	41	4
	68	13		23	10	Candlelight	22	4
				28	4		31	5
				29	4		60	13
				33	7		61	10
				36	12		48	5
				6	5		61	10
				39	5		34	6
							59	7
							14	4
							26	7
							33	7
							36	12
							51	4
							65	13
								continued
COCKATOO ... see Animals								
and Flower Holders								
COHAGEN, Margaret								
see Club News, "Let's Get Ac-								
quainted"								
"COLLECTORS CORNER"								
by Robert Coyle	1	3						
	2	7						
	3	3						
	5	5						
	6	4						
	7	4						
	8	4						
	9	3						
	10	8						
	11	4						
			COMMEMORATIVE					
		 see Club News					
			COMMUNITY ... see Nearcut					
			CONTINENTAL . see Pressed					
			Patterns, Martha Washington					
			CONVENTION see Club News					
			CORTLAND see Rock Crystal					

AUTHOR/TITLE/TOPIC	ISSUE	PAGE	AUTHOR/TITLE/TOPIC	ISSUE	PAGE	AUTHOR/TITLE/TOPIC	ISSUE	PAGE
Diane	14	4	FIRST CAMBRIDGE GLASS PIECE	2	3	HARVEST . see Rock Crystal		
	39	11	"FLOWERS & FROGS" by			HEIRLOOM see Pressed		
	61	10	Pat Binkley	59	10	Patterns, Martha Washington		
Dragon	43	6	"FLOWER HOLDERS"			HENDERSON, Paul		
Elaine	14	4	by Bill Smith			Puzzle - Colors	45	5
	31	2	Bashful Charlotte	19	5	Solution - Colors	46	3
	59	7	Blocks - #1500 Series	23	4	HERON see Animals		
"Etchings" by Phyllis Smith			Draped Lady	21	5	and Flower Holders		
Windsor	40	4	Eagle & Cockatoo	34	4	"GENERAL HISTORY OF THE CAMBRIDGE GLASS CO." by John Wolfe	1	4
Lorna	41	9	Flower Block #2899	20	8		2	4
#736	42	4	Geisha Girl	40	5		3	2
Dragon	43	6	Heron	41	5		4	2
#732	46	3	Mandolin Lady	38	3		5	2
Etching #704	37	8	Rose Lady	17	6	HISTORY		
Etching #742	39	6	Self-Arranging Block	22	8	see Cambridge Glass Co., History		
	39	13	Turtle	35	8	HOKEY-POKEY STUDY GROUP see Club News		
Etta	27	5	Vase Insert	33	10	HOFFMAN, George		
General Information	1	4	FLOWER HOLDERS AND BLOCKS			"Ivy Balls"	53	8
	3	6	Ballot	60	18	see Club News, "Let's Get Ac-		
	4	3	Base types & differences	17	6	quainted"		
Gloria	41	8	Blue Jay - photo	60	6	HOUSTON, Virginia		
	43	4	Color Chart	58	10	"Morning Meditations of a		
Grape #401	3	6	Color Chart - revised	61	11	Glassaholic"	61	7
Grape, White Enameled	25	5	Introduction - advertisement .	30	16	HUGHES, Janice		
Hunt Scene	33	12	Reproduction - Seagull &			"Open Letter To The Member-		
Lorna	41	9	Draped Lady	23	3	ship	40	9
Marjorie	3	8	Seagull	52	10	"Question"	68	7
	26	7		59	11	... see Club News, "Let's Get		
Martha	3	7	Two Kid - photo	60	7	Acquainted"		
	14	4	FLOWER POT #705	33	7	HUNT SCENE . see Etchings		
	43	4	FLYING LADY - Sea Shell . .			IMPERIAL GLASS CO.		
Paisley	63	2 see Pressed Patterns			Cambridge Square reproduc-		
Portia	14	4	FORSYTHE, Ruth "Patterns"			tions . see Pressed Patterns		
	38	8 see "Patterns"			Caprice reproductions -		
Rosepoint	4	5	FOUR LINES #2960 see Pressed Patterns		
	20	6 see Nearcut			Other reproductions		
	31	2	FROGS see "Is It Cambridge"		
	41	3 see Animals			"IN SEARCH OF A GEOR-		
	50	3	GADROON			GIAN TUMBLER" by Tom Gray	63	3
	55	4 see Pressed Patterns			"INTERVIEW - MARTHA		
	56	6	GEISHA . see Flower Holders			MITCHELL" by Russell		
	61	10	GEORGIAN TUMBLERS			Vogelsong	54	4
Whiskey Bottles	49	10	Description & picture	29	6	"INTERVIEW - VIRGIL		
Wildflower	35	8	Article by Tom Gray	63	3	SALTZ" by Charles Upton ...	23	5
Windsor	40	4	GINGER JAR & DOLPHIN			INVERTED STRAWBERRY .		
	45	10	Candlesticks #501	29	5 see Nearcut		
	52	3	GLENDALE see Rock Crystal			INVERTED THISTLE		
Ye Olde Ivy	35	2	GLORIA see Nearcut		
	45	10 see Etchings			"IS IT CAMBRIDGE"		
ETCHING PROCESS	14	5	GRAPE #401 .. see Etchings			by Dave McFadden		
	23	5	GRAPE, White Enameled ...			Introduction	17	8
ETTA see Etchings			Nude Stem cocktail - Imperial	18	5
EVERGLADES			GRAY, Tom			Bridge Hound - Guernsey ...	19	2
..... see Pressed Patterns			"In Search of a Georgian			Rosepoint - Imperial	20	7
FAIRS			Tumbler"	63	3	Miscellaneous - Imperial	21	4
..... see Club News			GUERNSEY GLASS CO. ...			Inverted Strawberry - Guernsey	22	9
FARBERWARE		 see "Is It Cambridge"			Miscellaneous - Imperial	23	3
Advertisement	64	13	"GWEN'S GLASSLINE"			Caprice & Cambridge Square -		
"Chrome Nude Strips"			by Gwen Shumpert	37	6	Imperial	24	6
by Jack & Sue Rettig	59	12	HANOVER see Rock Crystal			Jefferson Line - Imperial	25	6
"Farberware" by Bill Smith ..	60	8	"HAPPY NEW YEAR & HAPPY GLASS HUNTING"			Rock Crystal Engravings	27	3
"Gwen's Glassline"			by John Wolfe	9	5	3" Swan - Mosser	28	6
by Gwen Shumpert	37	6	HARDESTY, David . see Club		 continued		
"FEARSOME FOURSOME"			News, "Let's Get Acquainted"					
by McFadden & Wollenhaupt	27	6						
FEATHER								
..... see Nearcut								
FERNLAND								
..... see Nearcut								
FINANCIAL STATEMENTS .								
see Club News, Auditor's Report								

AUTHOR/TITLE/TOPIC	ISSUE	PAGE	AUTHOR/TITLE/TOPIC	ISSUE	PAGE	AUTHOR/TITLE/TOPIC	ISSUE	PAGE
Frog, Squirrel, Dog & Cat bottles - Mosser	29	6	LETTERS - see "We Get Letters" and "Questions & Answers"			MOSS ROSE ... see Nearcut		
Pharmaceutical Line - Variety Cambridge Molds owned - Mosser	30	15	"LETTERS FROM LENA" by Lena Barnes	23	11	MOSSER GLASS COMPANY ... see "Is It Cambridge"		
Miscellaneous - Crystal Art, Imperial & Mosser	31	5		24	7	MOUNT VERNON ... see Pressed Patterns		
Rock Crystal Engravings - LaFlo	32	5	LEXINGTON ... see Nearcut and Rock Crystal	25	3	MUSEUM ... see Club News		
#3 Cambridge Bird - Mosser	33	11	LILY OF THE VALLEY ... see Rock Crystal			NARCISSUS BULB VASE ..	47	9
ISAACS, Doris			LIONS ... see Animals			NAUTILUS ... see Pressed Patterns		
"Cambridge Connoisseur"	62	6	LORNA ... see Etchings			NEARCUT		
"Museum Donation"	55	3	LYND, Arnold ... see Club News, "Let's Get Acquainted"			Awards		
"Scrapbook Rambles"	58	14	LYNBROOK see Rock Crystal			Jamesstown Exposition 1907	2	4
... see Club News, "Let's Get Acquainted"			MADALINE ... see Nearcut			Golden West & American 1909	2	4
... see Club News, Quarterly Meetings			MANOR ... see Rock Crystal			St. Louis 1904	10	5
ISAACS, Karen			MAP of Cambridge, Ohio ...	12	6	Baskets	36	4
"Cambridge Connoisseur"	48	5	MARDI GRAS			Bennett Juicer	23	6
IVY BALLS			Information	5	3		64	9
Advertisement - Aurora Stems	58	14	"Colors In Cambridge"	9	4	Buzz Saw #2966		
#3011 Nude Stem	57	7	Information	25	3	Toy Dishes	8	3
"IVY BALLS"			Picture	42	4	Epergne, 3 piece	30	6
by George Hoffman	53	8	MANDOLIN LADY ... see Flower Holders			Article w/pictures	38	6
JAPONICA			MAJESTIC see Rock Crystal			Fake Caster Set	54	3
... see "Trademarks"			MANNEQUIN HEAD ...	30	4	... see Carnival		
Photo - covered urn	52	6		52	7	Candy Plate, Mug & Tray	30	3
Photo - vase	66	12	MARJORIE ... see Etchings and Nearcut			Carnival	11	7
JEFFERSON ... see Pressed Patterns			MARTHA ... see Etchings & Pressed Patterns				57	3
JENNY LIND ... see Pressed Patterns			MARTHA WASHINGTON ... see Pressed Patterns			Chelsea	59	3
JUGS ... see Catalog Pages			MARYLAND see Rock Crystal				4	4
JUICE EXTRACTOR ... see Nearcut			McAFEE, Rose			Community - picture	27	4
KEG SET ... see Advertisements			"Cambridge Glass Collectors Hold Gathering Here"	63	4	Community Colonial	33	5
KING EDWARD ... see Rock Crystal			McCARTNEY, Will Cameron			Cut Wild Rose	26	7
KITCHEN GLASSWARE ... see Nearcut			Nude Stem Description	16	6	Daisy - article	2	6
LABELS ... see "Trademarks"			Circular Letter #183	20	5	Daisy - lamp	6	5
LAFLO CUT GLASS CO. ... see "Is It Cambridge"			McFADDEN, Dave			Dorothy	24	10
LADY LEGS .. see Bookends			... see "Is It Cambridge"			Empress Shaker	23	6
LAMPS			... see Club News, "Let's Get Acquainted"			Feather #2651	52	4
Draped Lady	21	5	McFADDEN, Joy			... see Carnival	1	7
Hurricane	67	10	"Fearsome Foursome"	27	6	Ferland #2635		
Monkey	53	4	"Prices Here & There"	51	8	Toy Dishes	8	3
Nearcut	24	10	"Rock Crystal Engravings"	43	3	Article	9	6
Owl	30	5	"Rosepoint"	67	6	Forks #2696	11	5
	52	6	"MEMOS FROM THE FIRST CONVENTION" by Fran Pavlov	13	8	Four Lines #2960	32	5
LANDMAN, Ruby ... see Club News, "Let's Get Acquainted"			MESSAGE FROM THE PRESIDENT see Club News, Charles Upton, Robert Coyle, Bill Smith			General Information	35	5
LARCHMONT ... see Rock Crystal							1	4
LaTOURAINNE .. see Nearcut			MONKEY LAMP ... see Animals and Lamps			Gothic #2970	2	4
LAUREL WREATH ... see Rock Crystal			MONTROSE see Rock Crystal			Jelly Jars	66	4
"LET'S GET ACQUAINTED" by Phyllis Smith ... see Club News			"MORNING MEDITATIONS OF A GLASSAHOIC" by Virginia Houston	61	7	Kitchen Wares	34	8
						Picture	38	8
						Article	64	8
						Lamps	24	10
						LaTouraine	25	4
						Lexington #2860	40	6
						Article	58	12
						Madaline	22	6
						Marjorie		
						Catalog page	16	7
						... see Carnival		
						Moss Rose	27	5
						Paul Revere	22	7
						Peacock		
						Article	7	6
						Picture	52	7
						Plymouth #2630	39	12
						Red Sunflower		
						... see Daisy		
						Ribbon #2653	15	3
							23	7

continued

AUTHOR/TITLE/TOPIC	ISSUE	PAGE	AUTHOR/TITLE/TOPIC	ISSUE	PAGE	AUTHOR/TITLE/TOPIC	ISSUE	PAGE
NEARCUT continued			ORME, W. L. - Picture	6	6	Caprice		
Snowflake see Fernland			ORME, William C. see Club			Advertisement	65	7
Spoons #2694	32	5	News, Convention Speaker		 see "Is It Cambridge"		
Star #2656			OWL LAMP .. see Animals &		 see "Patterns", Caprice		
Picture	23	7	Lamps		 see "Stems"		
Article	24	12	"PATTERNS" by Ruth Forsythe			Block Optic	29	4
Stratford	41	6	Nearcut Feather	1	7	35	7	
Strawberry, Inverted			Cut Wild Rose	2	6	Everglades		
Article	3	5	Inverted Strawberry	3	5	Pictures	44	12
Reproduction information ..	22	9	Chelsea	4	4	49	3	
	23	10	Statuesque	5	4	Article - Buffalo	52	11
	33	11	Red Sunflower	6	5 see "Is It Cambridge"		
	56	9	Nearcut Peacock	7	6	Gadroon		
	64	13	Nearcut Toy Dishes	8	3	Picture	33	4
..... see Carnival			Snowflake - Fernland	9	6	54	7	
Sunburst	23	6	Stratford	10	4	58	12	
Thistle			Dresden Figure	11	5	Jefferson - reissued	25	6
Tomahawk #2561 see Carnival			#4072 Cutting	12	4	Jenny Lind - picture	49	3
Toy Dishes	8	3	First Convention Breakfast ..	13	7	Martha		
Wheat Sheaf #2660			Etchings	14	4	Advertisement	33	14
Article	16	3	Ribbon #2653	15	3	Catalog pages	63	9
	32	5	Wheat Sheaf #2660	16	3	Martha Washington		
..... see Carnival			Martha Washington	17	4	Article	17	4
#2340			Cambridge Square	18	6	Advertisement	20	4
#2508 - Article	23	8	Harvest	19	4	Centennial, Continental, Heir-		
#2588 Bowl	23	6	Rosepoint	20	6	loom, Victorian	31	3
#2658			Virginian	21	6	Mount Vernon		
#2666			Candlelight	22	4	Picture	30	19
#2693			Nearcut #2508	23	8	37	2	
"NEARCUT PATTERNS"			Star #2656	24	12	43	4	
by Phyllis Smith			Novelty Figures	25	6	Advertisement	43	7
Wheat Sheaf, Spoons, Forks .	32	5	Lily of the Valley	26	12	Picture	46	10
Jelly Jars	34	8	"PATTERNS" by Bill Smith			Taiwan Reproduction	54	3
Four Lines #2960	35	5	Caprice	44	8	Catalog page	68	6
Baskets	36	4	45	6	Nautilus	47	11	
Buzz Saw #2699	38	6	46	4	Pristine			
Plymouth #2630	39	12	47	6	Pictures	35	9	
Lexington #2860	40	6	48	8	Catalog pages	61	8	
Stratford	41	6	PAUL REVERE . see Nearcut			Rosepoint, pressed	67	6
Specials - bowls	47	4	PAVLOV, Fran			Sea Shell		
#2636	48	4	"Memos From The First Con-			Article	42	10
Specialties	49	7	vention"	13	8	58	3	
#2649, #2654 & Daisy #2760 .	50	12	PAVLOV, Richard -			Statuesque	57	10
Shakers	52	4 see Club News, "Profiles"			Flying Lady	57	7
Kitchen Items	64	8	PAISLEY			58	6	
Unknown # w/cutting	65	8	see Etchings			Catalog pages	67	4
Gothic #2970	66	4	PEACOCK .. see Animals &			Sonata	65	4
			Nearcut			Tally-Ho		
NEWSPAPER ARTICLES			"PIONEERING IN QUALITY			Article w/catalog pages	59	4
Reprint - Sept. 1, 1948	45	4	GLASSWARE AT CAM-			Cocktail Shaker	43	4
Bennett in Hall of Fame	61	1	BRIDGE" by J. M. Hammer		 see "Stems"		
Cambridge Convention 1978 .	63	4	Part I	26	5	Virginian		
"NOTES FROM YOUR EDITOR"			Part II	27	8	Article	21	6
by Phyllis Smith	30	15	Part III	29	3	Advertisement	30	14
	31	3	Part IV	30	3	40	7	
	32	8	Part V	31	8	Catalog pages	62	8
	33	11	Part VI	32	6	Weatherford		
	34	5	Part VII	33	8	Picture	29	5
	35	9	PLYMOUTH see Nearcut			33	9	
	37	3	POMONA DECORATION ..	3	6	POUTER PIGEON		
	38	7	PORTIA see Bookends		
NUDES			see Etchings			"PRICES HERE & THERE"		
OHIO STATE FAIR			PORTIERE - picture	54	11	by Phyllis Smith	42	5
..... see Club News			PRESSED PATTERNS			43	5	
"OPEN LETTER TO THE			Cambridge Square			44	11	
MEMBERSHIP"			Article	18	6	45	5	
by 1977 Display Room			Reissued	24	6	46	11	
Committee	47	9	53	6	47	10		
..... see Barstow, Jo		 see "Trademarks"			48	6	
..... see Hughes, Janice						49	8	

continued

AUTHOR/TITLE/TOPIC	ISSUE	PAGE	AUTHOR/TITLE/TOPIC	ISSUE	PAGE	AUTHOR/TITLE/TOPIC	ISSUE	PAGE
continued	52	3	RETTIG, Jack & Sue			"ROSE POINT"		
	54	11	"Chrome Nude Strips"	59	12	by Joy McFadden, Frank &		
	56	8	"The Last Breakfast"	13	11	Vicki Wollenhaupt	67	6
by McFadden & Wollenhaupt	51	8 see "Touch of History"			RUBINA		see Colors
PRISTINE see Pressed Patterns			RETTIG, Kit - "Photographic			RUBY, Ed ... see Club News,		"Let's Get Acquainted"
"PROFILES" by Evelyn Allen			View of the 1977 Convention	52	5			
..... see Club News, "Profiles"			and Show"			SALAD PLATE #596	30	17
PUZZLES			RIBBON		see Nearcut	SHUMPERT, Gwen		
Puzzle by Vicki Wollenhaupt	31	9	ROCK CRYSTAL			"Gwen's Glassline"	37	6
Solution	32	3	ENGRAVINGS			"Cambridge Square by		
Puzzle by Paul Henderson ...	45	5	Celestial	35	6	Imperial"	53	6
Solution	46	3	Chesterfield	27	3 see Club News,		Banquet Speaker
QUARTERLY MEETING			Cortland	65	6	SCOTTY DOG .. see Animals		and Bookends
INFORMATION see Club News			Deerfield	65	6			
"QUESTIONS & ANSWERS"	2	5	Dover	65	6	"SCRAPBOOK RAMBLES"		
"QUESTIONS & ANSWERS"			Fleurette	65	6	by Doris Isaacs	58	14
by Frank Wollenhaupt	23	10	Glendale	65	6	SEAGULL see Flower Holders		
	24	8	Hanover	65	7	"SEA SHELL" by Lynn Welker	58	3
	25	3	Harvest	19	4	SEA SHELL		see Pressed Patterns
	28	6	King Edward	65	7	"SEVENTY-FIVE & FIFTY		
	29	6 see "Is It Cambridge"			YEARS AGO"	35	4
	30	3	Larchmont	65	6	SHAVING SET	31	7
	31	3	Laurel Wreath	27	3	SILVER CITY - Caprice Reissue	48	8
	33	4	Lexington			SMITH, Bill		
	34	6	Advertisement	46	12	"BEaWare of Reissues"	64	13
	35	9 see "Is It Cambridge"	65	7	"Book Is Delivered"	39	7
	37	2	Lily of The Valley	26	12	"Farberware"	60	8
	39	5	Lucia	61	10	"Researching Magazines"	65	6
by Bill Smith	53	8	Lynbrook	51	7 see "Flower Holders"	 see "Patterns", Caprice
	54	5	Majestic		 see Club News, "Profiles"	 see Club News, President's
	56	9	Picture	36	8	SMITH, Phyllis		
RADIANT ROSE			Manor			"Banquet Speaker" Shumpert	61	3
..... see Rock Crystal			Advertisement	65	7	"??Cambridge??"	54	3
RANKIN, David			Bell	66	10	"Festive Weekend Planned" .	50	6
"A Supreme Novelty" (Turkey)	44	6 see "Is It Cambridge"			"Rankin Reduces Confusion"	64	7
"Convention Banquet"	14	6	Maryland	65	7	"Reprint Pays For Itself"	41	9
"Project Committee Report" .	26	13	Montrose, Bell	66	10	"Unique Ladies"	68	7
... see Club News, "Let's Get			Perry	46	12 see Cartoons	 see Club News, Auction,
Acquainted"			Radiant Rose	57	11 see Club News, Auction,		Convention, Quarterly
..... see "Trademarks"			Rondo	33	12	Meeting & Show Reports		... see Club News, "Let's Get
"RANKIN REDUCES			Roxbury	65	6	Acquainted"	 see "Etchings"
CONFUSION" by Phyllis Smith	64	7	Tempo	65	6 see "Nearcut Patterns"		see "Notes From Your Editor"
RANKIN, Sue			Thistle	33	11	... see "Prices Here & There"		
"Quarterly Meeting Report" .	66	6	Today	33	12	SNOWFLAKE ... see Nearcut		
see Club News, Ohio State Fair			Vesta	43	3	SONATA see Pressed Patterns		
Reports			Wedding Rings	14	4	SQUIRREL		see Animals
RED SUNFLOWER			Whitehall	43	3	STAR see Candleholders and		Nearcut
..... see Nearcut			#138 Engraving	35	11	STATUESQUE		see Stems
"REFLECTIONS"			#4072 Cutting	12	4	"STATUESQUE #3011"		
by Charles Upton	62	4	"ROCK CRYSTAL			by Lynn Welker	57	6
REGENCY			ENGRAVINGS"			STEMS		
..... see Stems			by Joy McFadden	43	3	Miscellaneous Stems	41	3
REISSUES			RONDO ... see Rock Crystal			Pristine	35	9
Cambridge Square	53	6	ROXBURY . see Rock Crystal		 continued		
Lady Legs	64	13	ROSE LADY					
Statuesque	42	6 see Flower Holders					
..... see "Is It Cambridge"			ROSE POINT .. see Etchings					
"REPRINT PAYS FOR ITSELF"			and Pressed Patterns					
by Phyllis Smith	41	9	"ROSE POINT - ITS					
"REPRODUCTIONS"			BEGINNINGS"					
by Russell Vogel song	58	12	by Lynn Welker	55	4			
RETTIG, Jack			"ROSE POINT"					
"Auction Report"	42	4	by Lynn Welker	56	6			
..... see Club News, "Let's Get								
Acquainted"								

AUTHOR/TITLE/TOPIC	ISSUE	PAGE	AUTHOR/TITLE/TOPIC	ISSUE	PAGE	AUTHOR/TITLE/TOPIC	ISSUE	PAGE
Regency see Stradivari			LaTouraine	25	4	VICTORIAN see Pressed		
Rose Point - pressed	67	6	Miscellaneous	26	6	Patterns, Martha Washington		
. see "Stems"			Chelsea, Moss Rose	27	4	VIRGINIAN see Pressed		
Simplicity #301	51	7	Azurite and Ebony	28	4	Patterns		
Statuesque #3011 Nude	57	6	Block Optic, Weatherford	29	4	VOGELSONG, Russell		
Description	16	6	Flower Holders	30	16	"Buffalo Hunt Scene"	52	11
Stradivari	33	10	Compact, Shaving, Desk Set	31	7	"Cambridge Nearcut Carnival"	59	3
Sweetheart	31	9	Smoking Items	32	9	"Cambridge Rubina"	65	3
Tally-Ho	59	4	Narrow Optic Items	33	7	"Crown Tuscan"	67	3
#1953	39	9	Unusual Dinnerware Pieces	35	11	"Martha Mitchell Interview"	54	4
#1957	65	4	Willow Blue - Decagon	36	12	"Reproductions"	58	12
#1958	57	11	Water Sets, Place Card	37	8	"WE GET LETTERS"		
#3077	33	7	Turkey	38	5	from NCC Members	18	9
#3106	55	4	Crystal w/ Ebony	39	6		22	8
#3121	55	6	Swans	40	8		34	13
#3122	39	11	Gloria Etching	41	8		40	9
#3500	55	5	Sea Shell Items	42	10		41	10
#3775	48	5	#3400 Ball Line, Etchings	43	4		41	10
"STEMS" by Frank &			Everglades and Swan	44	12		54	8
Vicki Wollenhaupt			Windsor & Ye Olde Ivy Etching	45	10		55	8
#3114	31	5	Mt. Vernon	46	10		56	10
#1066 Aurora	32	3	TOY DISHES	8	3		60	13
#1402 Tally-Ho	33	3	TOY CANDY CONTAINERS				61	10
	34	5 see Candy Boxes			WEATHERFORD . see Pressed		
Stradivari	35	6	"TRADEMARKS"			Patterns		
#3300	37	9	by David Rankin			"WELCOME TO THE HOW,		
Caprice	38	4	Introduction	23	3	WHEN AND WHERE		
#3115	39	13	Nearcut	24	9	COLUMN" by John Wolfe	1	4
#3500	40	3	Cambridge Paper Label	26	4	WEDDING RINGS .. see Rock		
#3011 Statuesque	42	6	Triangle C	27	3	Crystal		
#3122	44	3	Genuine Hand Made			WELKER, Lynn		
#3121 and #3126	45	3	Cambridge Paper Label	28	3	"Auction Information"	68	3
STRADIVARI see Stems			Specialty Labels - Art Glass	29	2	"Rose Point - Its Beginnings"	55	4
STRATFORD see Nearcut			Specialty Labels	31	2	"Rose Point"	56	6
STRAWBERRY, Inverted			Specialty Labels - 1950's	32	2	"Sea Shell"	58	3
. see Nearcut			Rock Crystal	33	12	"Statuesque #3011"	57	6
STUDY GROUPS			Ye Olde Ivy and Japonica	35	2	"Tally-Ho"	59	4
. see Club News			Gold and Acid Stamp - Crown	36	11 see Colors, "Cambridge		
SWANS see Animals			Paper Label - Update	42	8	Rainbow"		
. see "Cambridge Swans"			TRADEMARKS ARTICLE		 see Club News, "Let's Get		
. see "Touch of History"			by Charles Upton	9	2	Acquainted"		
SWEETHEART see Stems			TURKEY see Animals			WHEAT SHEAF . see Nearcut		
SYRUPS	31	8	TURTLE see Animals and			"WHERE TO BEGIN"		
TALLY-HO see Pressed			Flower Holders			by Gary and Mona Campbell	16	3
Patterns and Stems			TWO-KID see Flower Holders			"WHY DO WE COLLECT		
"TALLY-HO" by Lynn Welker	59	4	"UNIQUE LADIES"			CAMBRIDGE GLASS"		
TARTER, Jabe see Colors,			by Phyllis Smith	68	7	by Harry and Evelyn Allen	10	6
"Colors In Cambridge"			UPTON, Charles			WILDFLOWER .. see Etchings		
TEMPO see Rock Crystal			"Antique Trader Article"	6	2	"WILL THE REAL CAM-		
"THE LAST BREAKFAST"				7	2	BRIDGE TURKEY PLEASE		
by Jack & Sue Rettig	13	11		8	2	STAND UP" by Charles Upton	10	2
"THE LEGEND OF BLUE				9	2	WILLOW BLUE .. see Colors		
WILLOW"	36	9	"Cambridge Carnival Glass"	11	7	WINDSOR see Etchings		
THISTLE see Nearcut and			"Convention Report - 1974"	13	4	WINDSOR BLUE . see Colors		
Rock Crystal			"Discontinued Cambridge Glass"	19	4	WOLFE, John		
TODAY see Rock Crystal			"Interview With Virgil Saltz"	23	5	"Club News" Membership		
TOMAHAWK #2561			"Reflections"	62	4	Report	3	5
. see Nearcut			"Will The Real Cambridge			"Happy New Year & Happy		
TOMATO see Colors			Turkey Please Stand Up"	10	2	Glass Hunting in 1974"	9	5
"TOUCH OF HISTORY"		 see Club News, Presidents			"Welcome To How, When and		
by Jack & Sue Rettig		 see Club News, "Let's Get			Where Column"	1	4
Introduction	22	6	Acquainted"		 see Club News, "Let's Get		
Star and Ribbon	23	6	VANITY TRAY	30	15	Acquainted"		
Nearcut Lamps	24	10	VARIETY GLASS COMPANY		 see "General History of		
		 see "Is It Cambridge"			Cambridge Glass Co."		

— NOTES —

AUTHOR/TITLE/TOPIC	ISSUE	PAGE
WOLLENHAUPT, Frank		
"Cambridge Swans"	36	5
"Convention Banquet"	14	6
... see Club News, "Let's Get Acquainted"		
..... see "Collectors Corner"		
.. see "Questions & Answers"		
WOLLENHAUPT, Frank & Vicki		
"Rose Point" Pressed Pattern	67	6
..... see "Stems"		
WOLLENHAUPT, Vicki		
"Fearsome Foursome"	27	6
"Prices Here & There"	51	8
..... see Puzzles		
YARDLEY JARS		
Sachet Jar	14	7
Color	7	3
YE OLDE IVY ... see Etchings		

Back issues of the CRYSTAL BALL are available to members only, at a cost of 60¢ each or 12 issues for \$7.

PLEASE ADDRESS ALL CORRESPONDENCE TO
CAMBRIDGE CRYSTAL BALL
National Cambridge Collectors, Inc.
P.O. Box #416
Cambridge, Ohio 43725

FIRST CLASS MAIL

FIRST-CLASS MAIL
U.S. POSTAGE
PAID
So. Vienna, Ohio
45369
Permit No. 15