

# Cambridge



# Crystal Ball

ISSUE NO. 67

NOVEMBER 1978

Published monthly by the NATIONAL CAMBRIDGE COLLECTORS, Inc.  
To encourage and to report the discovery of the elegant and boundless product  
of the Cambridge Glass Company, Cambridge, Ohio



Photo circa 1924

The Cambridge Glass Co., Cambridge, Ohio

## GRINDING DEPARTMENT

Where the majority of ware is ground and cut on the bottom, tops or edges.

MEMBERSHIP RENEWAL NOTICE  
If the date on your 11 - 78  
address label is - -  
This is your LAST ISSUE of the  
CRYSTAL BALL. Please renew NOW!

Looking forward to seeing many of you at the  
Quarterly Meeting. To those who cannot be  
with us, may we send our Best Wishes to you  
for a most Happy Thanksgiving!

*Bill*



# CAMBRIDGE CRYSTAL BALL

Official publication of National Cambridge Collectors, Inc., a non-profit corporation with tax exempt status. Published once a month for the benefit of its members. Membership is available for individual members at \$10 per year and additional members (12 years of age and residing in the same household) at \$3 ea. All members have voting rights, but only one CRYSTAL BALL will be mailed per household.

Back issues of the CRYSTAL BALL are available to members only, at a cost of 60¢ ea. or 12 issues for \$7.

## 1978-79 Officers & Committee Chairpersons

PRESIDENT ----- William C. Smith  
VICE-PRESIDENT ----- George W. Hoffman  
SECRETARY ----- Janice Y. Hughes  
TREASURER ----- Doris J. Isaacs  
SERGEANT-AT-ARMS ----- George W. Hoffman  
BUDGET & FINANCE ----- William C. Smith  
BY-LAWS -----  
CONVENTION ----- George W. Hoffman  
MEMBERSHIP ----- Josephine A. Barstow  
MUSEUM ----- Arnold Lynd  
PROGRAM & ENTERTAINMENT - Charles A. Upton  
PROJECT -----  
PUBLICITY -----  
STUDY GROUP ADVISORY ---- Janice Y. Hughes

1979 CAMBRIDGE AUCTION ----- Lynn Welker

CRYSTAL BALL Editor ----- Phyllis D. Smith

## CLASSIFIED ADVERTISING RATES

5¢ per word \$1.00 minimum

We cannot mix type size in classified advertisements. Abbreviations and initials will count as words. Payment in full must accompany all ads.

## DISPLAY ADVERTISING RATES

	Members	Non-Members
1/8 page -----	\$ 4.00	\$ 6.00
1/4 page -----	7.00	10.00
1/2 page -----	12.00	18.00
3/4 page -----	17.00	25.00
Full page -----	22.00	33.00

## DEALERS DIRECTORY

1" ad ----- \$6.00 for 6 months

Cambridge CRYSTAL BALL assumes no responsibility for items advertised and will not be responsible for error in price, description or other information.

Advertising copy must be in our hands by the 15th of each month to assure publication in our next issue. Advertisements containing reproductions will not knowingly be accepted unless clearly stated.

PLEASE ADDRESS ALL CORRESPONDENCE TO

Cambridge CRYSTAL BALL  
National Cambridge Collectors, Inc.  
P. O. Box #416  
Cambridge, Ohio 43725

PLEASE NOTIFY US IMMEDIATELY OF ANY CHANGE  
IN YOUR ADDRESS!

Please enclose a self-addressed, stamped envelope when requesting information!!

# Club News

## Quarterly Meeting

As we go to press with this issue of the CRYSTAL BALL, last minute details are not yet completed for the November 11th, Quarterly Meeting and Second Annual Museum "Bookend" Project Dinner.

However, plans will be completed and the information will be in your hands either with this newsletter or via a separate mailing - whichever proves quicker!

Our Program Chairman Charles Upton and his committee consisting of Dave and Sue Rankin and Tom Gray, have what promises to be an exciting program for us. It is to be a slide presentation on Cambridge Candlesticks. Please feel free to bring any candlestick you may question or that you feel would add to the display. Also be sure to bring any items you wish to have identified during our Show and Tell session.

If it is not possible for you to attend the dinner, but you would like to attend the Quarterly Meeting, please feel free to do so. The Meeting will begin at approximately 8 PM.

As previously published, this Dinner and Meeting will be held on Saturday, November 11th, beginning at 6:30 PM. Baker's Restaurant & Motel is located 14 miles W of Cambridge on Old U.S. Route 40. Use the Norwich exit from I-70.

---

During the weekend of November 4 & 5, 1978, your President and Crystal Ball Editor (Bill & Phyllis Smith), have been invited to represent NCC in Cleveland, Ohio, at the Depression/Vintage Glass Show and Sale, sponsored by Western Reserve Depression Glass Club.

They will be taking new memberships, selling NCC books, and talking about Cambridge Glass to all who stop by and visit with them.

# Crown Tuscan

by Russell Vogelsong

Cambridge Crown Tuscan, a royal name in itself, is the subject of our first article.

Cambridge Coral was introduced in 1929. Beginning in 1936 it was renamed Crown Tuscan. Cambridge made pink opaque glass for 24 years and it was a very popular line. Today it is avidly sought by collectors across the country.

Colors in Crown Tuscan will vary from a light pink opaque to a very dark pink or coral and sometimes items will be found in an almost tan color.

Color variation is due to improper mixing of the chemical compounds made up for each batch of glass. It had to be mixed within 1 gram or the color would vary from batch to batch.

No item, in any of the Cambridge books or catalogues should be ruled as "Not made in Crown Tuscan", as over 5,000 molds were used to develop the Cambridge line.

Seashell patterns seem to have been the most popular line of Crown Tuscan. Examples are the Flying Lady bowl, Nautilus shell vases and compotes, sea shell ashtrays, cigarette boxes, etc. (see next two pages for other examples).

Crown Tuscan will be found decorated in a variety of ways, from platinum decorated to hand enameled. Etched and gold encrusted items seem to have been the most popular and these were special order items.

Often pieces are found acid stamped. The mark consists of: A Crown with the word "Tuscan" below it. Below the word Tuscan is a triangle enclosing the letter "C" (see example shown here).



CAMBRIDGE CORAL WAS PRODUCED 1929 to 1935 and CAMBRIDGE CROWN TUSCAN FROM 1936 to 1954!

(Reprinted from Vogelsong Newsletter, Vol. I, No. 1, July, 1971.)

A limited number of items have been found decorated in gold overlay and silver overlay, marked "Rockwell", from the Rockwell Silver Co., in Meriden, Conn. At this time we do not know if blanks were sent to Rockwell for Decoration and returned to the factory, or if they were purchased from Cambridge, decorated, and sold thru outlets, such as: Jewelry and Department stores, etc. If and when these questions are answered, we will report them.

Silk screen decoration seems to have been popular also, but was not quite as durable when constantly cleaned. Other pieces are known to have been etched and enameled in black, green and red.

There has been much discussion as to the items decorated at Cambridge. Recently we acquired a Crown Tuscan dish with the original label on the bottom which read, "Charlton Hand Decorated". We have also seen Fenton's Silver Crest Petticoat glass decorated exactly the same way and labeled "Charlton Hand Decorated". We can only assume that this was a small firm that bought glass blanks from different companies and decorated them.

The decoration consists of wreaths of roses and buds in red, green leaves and gold dots. Some have been found with a picture of a ship in harbor. We are sure many more designs and decorations will be found.

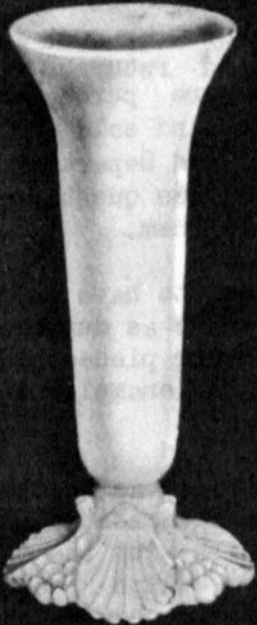
As we have traveled collecting Cambridge Glass, we have seen different pieces labeled Crown Tuscan that were not Crown Tuscan. The Cambridge Glass Co. was not the only manufacturer of pink opaque glass. We know that Fenton, Fostoria, Jeannette, Aladdin Lamp Co., and Westmoreland made this color and there may have been others.

Coloring in these items is sometimes found to be similar. None of these companies had any molds that would be confused with Cambridge. If you intend to collect Cambridge Glass of any type, I would advise you to send for books from the authors listed by us. Once you have studied these books and have seen Crown Tuscan, chances are you will not be mistaken when you see it.





# Seashell



49—10½ in. Belled Vase



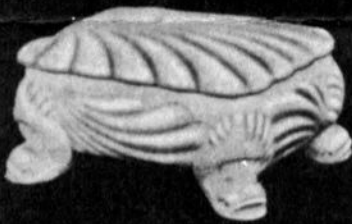
46—7½ in. Shell Flower Holder



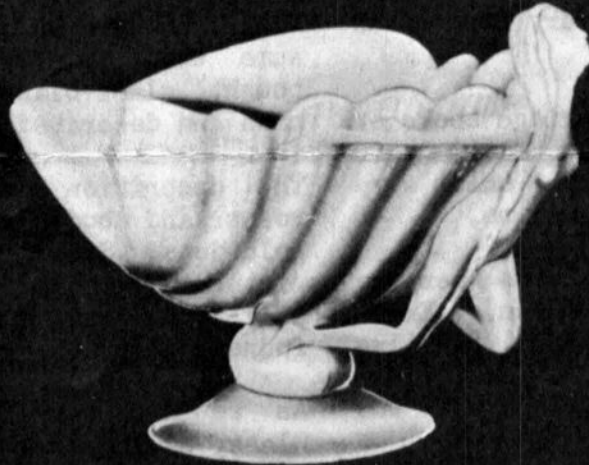
48—9 in. Belled Vase



34—3 in. 3 Toed Ash Tray



35 Cigarette Box & Cover



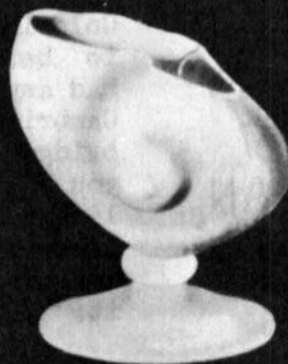
40—10 in. Flower or Fruit Center



33—4 in. 3 Toed Ash Tray



42—8 in. Flower Center



44—6 in. Flower Center



47—9½ in. Cornucopia Vase

JANUARY 1, 1940



*Seashell*



61—9 in. Candelabrum (3011)



110—4½ oz.  
Sea Food Cocktail



66—4 in. Ftd. Candlestick



60—9 in. Candlestick



11—7 in. Comport (figure)



647—6 in. 2 Holder Candlestick



10—5 in. Comport (figure)

# Rose Point



## The Cambridge Glass Company

by Joy McFadden, Frank and Vicki Wollenhaupt

ROSEPOINT by Cambridge! Most people who collect Cambridge immediately visualize that delicate etching when the word Rosepoint appears. Today, we wish to introduce you to what is considered the original Rosepoint.

A recent discovery of an original Cambridge advertisement (PHOTO #1) has helped to confirm speculation about an earlier style of Rosepoint. As you can see from this photo, this was a full line of stemware consisting of several sizes.

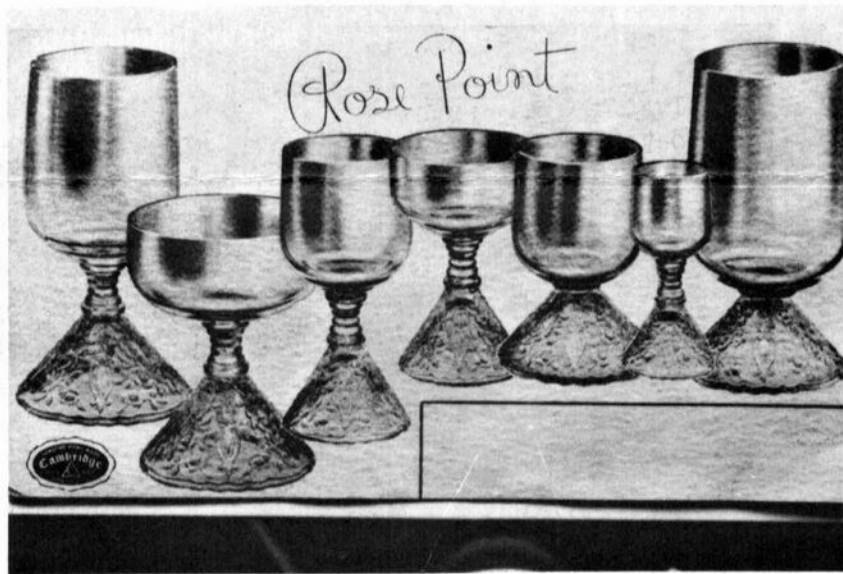


PHOTO #1

The Rosepoint pressed design appears on the cone shaped foot (PHOTO'S #2 & #3) and the bowl is plain, blown, and without design. This is in direct contrast to the more popular Rosepoint, where the design appears on the bowl in the form of an etching and the foot is plain.

This pressed design which appears on the cone shaped foot is on the top side and is raised, not indented. The authors are aware of this pressed style of Rosepoint being available in the colors of carmen, royal blue, amber and crystal. It should be noted that thus far the foot has been seen in crystal only. Of the seven styles shown, the authors have only seen goblets, sherbets and one cordial. This all crystal cordial was most unusual, in that it combined the pressed Rosepoint on the cone shaped foot, with the etched Rosepoint on the blown bowl.

We feel that the pressed Rosepoint was available at the very maximum, for a period of two years - 1932 to October, 1934. In late October, 1934, a circular letter from Mr. W. C. McCartney, Secretary and Sales Manager of the Cambridge Glass Company, was sent to all Salesmen, informing them of the introduction of the Rosepoint etching.

This letter read in part: "We want to be the first on the market with the Rose Point ETCHING for, no doubt, our coming out with this at this time will keep any other glass manufacturer from making a Rose Point Etching or at least using the name "Rose Point".

The Pope-Gosser China Company make a Rose Point Design on Dinnerware while R. Wallace & Sons make a design called "Rose Point" on Silverware, both of which are very striking and most beautiful. Pope-Gosser has applied for a design patent for the Rose Point design for dinnerware, R. Wallace have asked for one to use the design on silverware and we have application for a design patent for the Rosepoint for Glassware."

The Rosepoint etching was available to the general public in January, 1935 and proved to be one of the most popular lines ever produced by Cambridge.

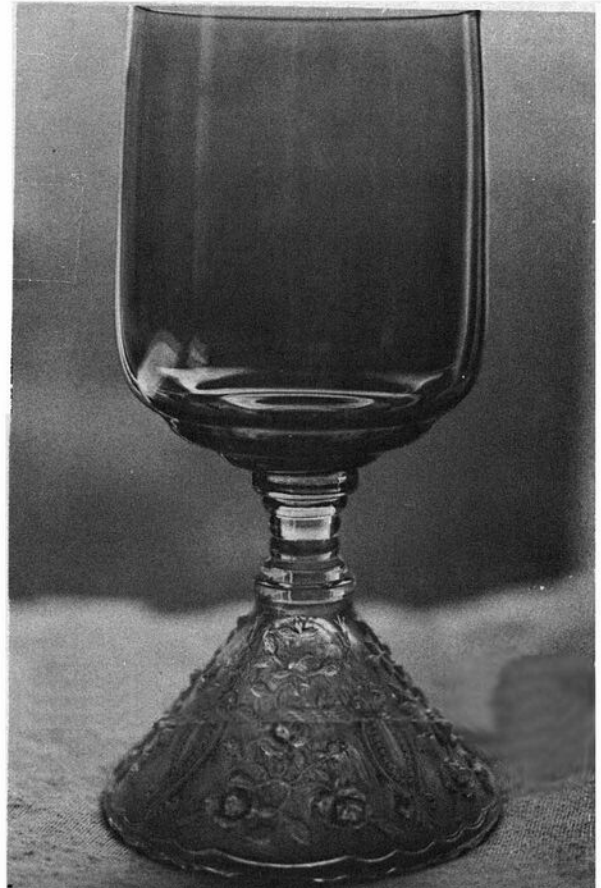


PHOTO #3



PHOTO #2

(Author's Note: We wish to thank Russ and Joanne Vogel song of Summit Art Glass Company, for the loan of their original advertisement used in Photo #1.)

EDITOR'S NOTE: Sincere thanks go to the author's for sharing this most informative article with us. This same article will also appear in the November, 1978, issue of "THE GLASS REVIEW". Joy, Frank and Vicki are Contributing Writers for this monthly magazine, published by Ben and Barbara Shaeffer, P. O. Box 2315, Costa Mesa, CA 92626.





Candelabra and Epergnes



1577—5 Lite Candlestick  
Height 6 in.  
Length 11 in.



1564—5 Lite Candelabra  
(26 Bobeche—8 No. 10 Prisms)



1566 Epergne  
(28 Bobeche—8 No. 10 Prisms—  
Arm & 2 Vases)



1565 Epergne





# The Cambridge Glass Company



## EPERGNES and EPERGNETTES (PATENT 19778 16) (PATENT 105954)



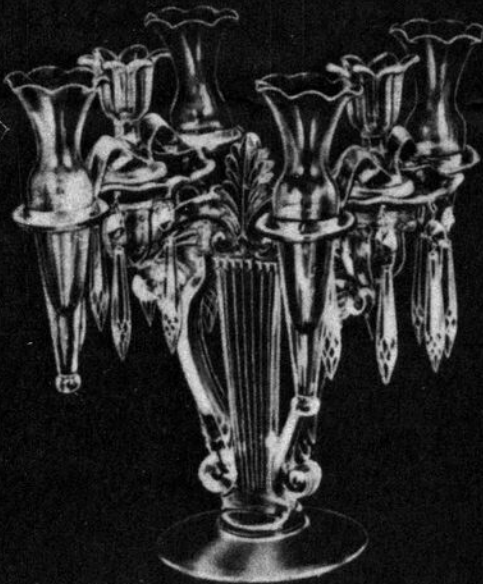
639 Epergne



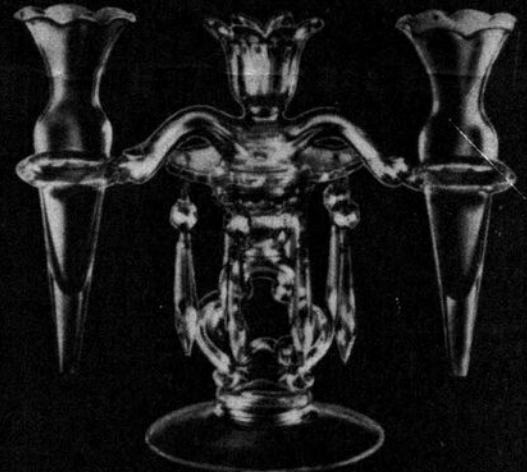
1441/8 Epergne



645 Epergne



1478 Epergne



654 Epergne



1357 Epergne



Caprice 75 Epergne



Caprice 76 Epergne

JANUARY 1, 1940



## HURRICANE LAMPS



1590 Twin Hurricane Lamp  
Height 9½ in.



1601  
Hurricane Lamp  
Height 8 in.



1603 Hurricane Lamp  
Height 10 in.

JANUARY 1, 1940



## CANDLESTICKS



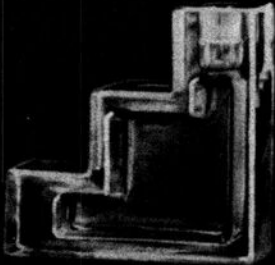
No. 1611—6 in. 2 lite



647—6 in. 2 Lite



Everglade 3—5 in. 2 lite



Pristine 496—5 in.  
Interchangeable Candlestick  
and Flower Trough



Caprice 74—4 in. 3 Lite



No. 1307—5 in. 3 lite



1457—6½ in. 3 Lite



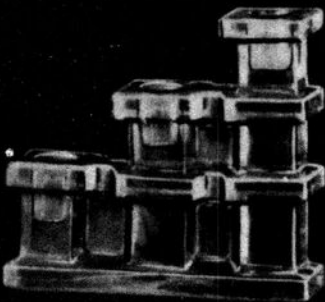
No. 638—6½ in. 3 lite



1338—6 in. 3 Lite



No. 1355—6½ in. 2 lite



Pristine 503—6 in. 3 lite



Martha 495—5½ in.  
2-Light



No. 1357—6½ in. 3 lite

JANUARY 1, 1940





## CANDELABRA



3121—7½ in.  
(No. 19 bobèche & 8 No. 3 Prisms)



506—3½ in.  
(No. 27 bobèche & 6 No. 6 prisms)



648/23—6 in.  
(No. 23 Bobèche & 5 No. 1 2½ in. Prisms)



1402/81—6½ in.  
(No. 23 bobèche & 5 No. 1 2½ in. Prisms)



649—5½ in.  
(No. 21 bobèche & 4 No. 1 2½ in. Prisms)



Caprice 70—7 in.  
w/No. 3 Prism



Virginian 499—7½ in.  
w/No. 4 Prism



Virginian 507—7 in.  
(No. 23 Bobèche & 5 No. 1 2½ in. Prisms)  
also  
Virginian 506  
(No. 19 Bobèche & 8 No. 1 2½ in. Prisms)



1270—6½ in.  
(No. 23 Bobèche & 5 No. 1 2½ in. Prisms)



3011—9 in.  
(No. 19 bobèche & 8 No. 1 3 in. Prisms)



497—5½ in. 1-Lite  
w/No. 4 Prism



505—5½ in.  
w/Bobèche & 9 No. 4 Prisms

JANUARY 1, 1940



## CANDELABRA



No. 1354/27—7 in. 3 lite  
(No. 27 bobeches & 18  
No. 5 Prisms)



No. 1354/19—7 in. 3 lite  
(No. 19 bobeches & 24 No. 1  
2½ in. Prisms)



No. 1358—7 in. 3 lite  
(No. 19 bobeches & 16 No. 1  
2½ in. Prisms)



No. 1354/23—7 in. 3 lite  
(No. 23 bobeches & 15 No. 1  
2½ in. Prisms)



1458/7½ in. 3 Lite  
(3 No. 19 Bobeches & 24 No. 1  
2½ in. Prisms)



1443—11 in. 3 Lite  
(No. 19 Bobeches & 24 No. 2 Prisms)



1441/1—9½ in. 2 Lite  
(No. 20 Bobeches & 20 No. 1  
3 in. Prisms)  
also 1441/2 furnished  
(No. 20 Bobeches & 20  
No. 2 Prisms)



No. 1356—7 in. 2 lite  
(No. 19 bobeches & 16 No. 1  
2½ in. Prisms)



1442—10½ in.  
(No. 19 Bobeches & 15 No. 1—3 in. Prisms)

JANUARY 1, 1940

# BOOKS FOR SALE

All of the available reference books relating to Cambridge glass can be ordered directly from the Club.

Address your orders for any of the following to:

BOOKS  
National Cambridge Collectors, Inc.  
P. O. Box 416  
Cambridge, Ohio 43725

Please add \$1.00 (P & I) on each book order.  
(Not required for Price List only orders)

Ohio residents please add 4½% State Sales Tax.

\*\*\*\*\*

by National Cambridge Collectors, Inc.

1949 - 1953 CAMBRIDGE GLASS CO. CATALOG REPRINT  
(300 page reprint of original catalog)  
Hardbound with Price Guide \$14.95

1930 - 1934 CAMBRIDGE GLASS CO. CATALOG REPRINT  
(250 page reprint of original catalog)  
Hardbound with Price Guide \$14.95

1978 PRICE GUIDE  
for 1930-1934 catalog reprint \$2.00

\*\*\*\*\*

by Mary, Lyle, and Lynn Welker

CAMBRIDGE GLASS CO.  
(120 pages of reprint from 8 old catalogs) \$6.95

CAMBRIDGE GLASS CO. BOOK II  
(119 pages of reprint from old catalogs) \$6.95

CAMBRIDGE, OHIO GLASS IN COLOR II  
(15 color plates w/ descriptions and notes) \$5.95

\*\*\*\*\*

by Harold and Judy Bennett

THE CAMBRIDGE GLASS BOOK  
(96 pages with 59 color plates)  
Paperback \$8.95

1903 CAMBRIDGE GLASS CO. CATALOG REPRINT  
(106 page reprint of an original catalog) \$7.50

\*\*\*\*\*

by Charles and Mary Alice Upton

1979 PRICE GUIDE to the CAMBRIDGE GLASS BOOK  
(Prices for each item in Bennett book) \$2.00

\*\*\*\*\*

## Classified

4th ANNUAL ANTIQUE SHOW and FLEA MARKET!  
Sunday, OCTOBER 29, 1978, 9 AM to 5 PM.  
Reynoldsburg High School, 6699 E. Livingston Ave., Reynoldsburg, Ohio. Dealers featuring HEISEY, CAMBRIDGE, DUNCAN-MILLER, ART GLASS, PRIMITIVES, FURNITURE and OTHER COLLECTIBLES. Sponsored by Reynoldsburg Heisey Collectors Club. Refreshments available. Admission 50¢.

WANTED: ROSEPOINT by CAMBRIDGE. Wines, clarets, cordials and sherbets. Write: L. J. Napoliello, Channel Club Towers, Channel Dr., Marmouth Beach, N.J. 07750.

## Notice

In order to schedule a January vacation, your Editor makes a special request!

PLEASE plan to have any articles, news notes, and advertising to be included in the FEBRUARY, 1979, issue of the CRYSTAL BALL in her hands, NO LATER THAN —

JANUARY 5, 1979

Anything received after that date will be published in the March, 1979 issue. THANKS for your cooperation!

## STUDY CLUB??

The following members are interested in forming a Study Group in their area. If you share a similar interest, please get in touch with the member nearest you.

Virginia Dutcher, Hide-A-Way Hills, Ohio.  
Joyce Dawson, Oregon.

JoAnne Wegman, Cleveland, O. 216-351-0799.  
Raymond W. Pyle, Mentor, Ohio.

Shirley Ladouceur, Central New York,  
Syracuse or Rochester.

Kenneth Cook, North Central Indiana,  
219-653-2511.

Beverly Hanson, California.

John Grubb, Williamsburg, Virginia.

Please send your inquiries c/o N. C. C.,  
P. O. Box 416, Cambridge, Ohio 43725.

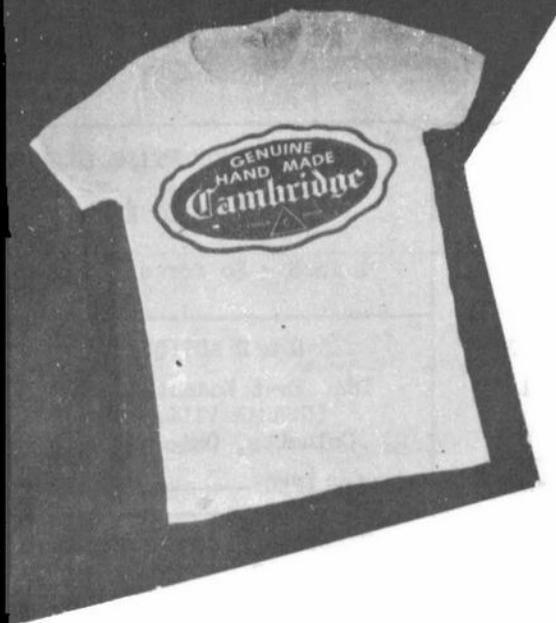


# DEALERS



# DIRECTORY

<p>ANTIQUE ALLEY 24815 Broadway Bedford, Ohio 44146 216-232-7739 ---- Mario Spagnola CAMBRIDGE GLASS ROYAL DOULTON</p>	<p>BENICIA ANTIQUE SHOP 305 First Street Benicia, California 94510 OPEN 11 AM - 5 PM Closed Monday</p>	<p>YOU CAN ADVERTISE YOUR ANTIQUE SHOP HERE! 1 inch - \$6 for six months</p>
<p>CHURCH STREET ANTIQUES 6 Church Street Boston, Massachusetts 02116 George or Frank --- 617-426-1048 CAMBRIDGE, HEISEY, GENERAL LINE</p>	<p>Z. E. LOPES - 707-745-0978 VISIT HISTORIC BENICIA and its 28 shops Off Interstate #80 ----- ----- North of San Francisco</p>	<p>D &amp; D ANTIQUES 184 East Kossuth Street (GERMAN VILLAGE) Columbus, Ohio 43206 DICK SLIFKO ----- 614-443-6020</p>
<p>YOU CAN ADVERTISE YOUR ANTIQUE SHOP HERE! 1 inch - \$6 for six months</p>	<p>GREEN ACRES FARM 2678 State Route 310 North Pataskala, Ohio, 43062 Sat. &amp; Sun. 1-6 PM --- W. Bryan CAMBRIDGE &amp; HEISEY - 614-927-1882</p>	<p>FINDER'S KEEPER'S ANTIQUES P.O. Box 303 P.O. Box 16023 Dayton, O. Columbus, O. 45401 43216 513-254-2937 614-965-1906 SPECIALIZING IN CAMBRIDGE GLASS!</p>
<p>SWISS HILLS COLLECTIBLES Mary &amp; Wilbur Henderson 303 Guilford Avenue Woodsfield, Ohio 43793 Shows Only -- 614-472-1133 SPECIALIZING IN CAMBRIDGE GLASS!</p>	<p>YOU CAN ADVERTISE YOUR ANTIQUE SHOP HERE! 1 inch - \$6 for six months</p>	<p>HOBBY HOUSE ANTIQUES Rt. #1, Cambridge, Ohio - 43725 614-432-6971 - Frank &amp; Lena Take Rt. #209 W. From Cambridge To RT. #658 - NORTH 1 1/2 MILES</p>
<p>HOFF - HAVEN ANTIQUES 21 Half Moon Lane Tarrytown, New York 10591 Shows-Mail-No Lists-914-631-2140 CAMBRIDGE, ROSE IN SNOW FOSTORIA</p>	<p>GEORGE HOFFMAN ANTIQUES 129 South 4th Street Newark, Ohio 43055 --- 614-345-8550 ---</p>	<p>D'MARIE'S ANTIQUES US Rt. 1 - just South of Rt. 606 Thornburg, Virginia 22565 703-582-6220 ----- Jim Rankin OPEN EVERY DAY 10 AM to 6 PM</p>
<p>OUR GLASS ANTIQUES Box 27, Wills Point, Tex. 75169 20th CENTURY COLLECTIBLES fea- turing CAMBRIDGE GLASS! Shows- No Lists - SASE Please - PAUL &amp; GINNY HENDERSON -- 214-563-6971</p>	<p>OLD TOLL GATE ANTIQUES Route #5, Box 7X Milan, Illinois 61264 SPECIALIZING IN HAVILAND CHINA MATCHING SERVICE</p>	<p>OLDE TOWNE ANTIQUES 307 W. St. Louis Street Lebanon, Illinois 62254 Edith Zimmerman -- 618-537-4567 GENERAL LINE ANTIQUES</p>
<p>S &amp; J ANTIQUES 5616 Hensel Woods Road Gahanna, Ohio 43230 Sue &amp; Jack Rettig - 614-855-1711 CAMBRIDGE GLASS OUR SPECIALITY</p>	<p>Use Schleigers book numbers or send saucer for pattern match. SASE APPRECIATED Marie Baker ----- 309-787-2392 GENERAL LINE OF ANTIQUES</p>	<p>WOLFE'S GLASS EMPORIUM 330 Woodlawn Avenue Cambridge, Ohio 43725 OPEN BY APPOINTMENT - JOHN WOLFE 614-432-2590 OR 614-262-9353</p>
<p>KILPATRICK'S ANTIQUES (Lu, Dort and Pat) S. E. Corner Public Square Troy, Ohio 45373 Res. (513) 335-1798 Shop 339-8754 WE BUY ONE PIECE OR COLLECTIONS!</p>	<p>THE GLASS CUPBOARD 39 Shire Oaks Drive Pittsford, New York 14534 Marcia Ellis 716-586-7596 CAMBRIDGE ONLY --- SASE FOR LIST</p>	<p>M &amp; M ANTIQUES &amp; COLLECTIBLES 310 N. Main - Box 417 Canton, Kansas 67428 The Martin's ----- 316-628-4705 SPECIALIZING IN CAMBRIDGE GLASS!</p>
<p>ROLLING ACRES ANTIQUES C. R. #33 (8th St. Rd.) Cambridge, Ohio 43725 Sandy Jenkins ----- 614-432-2570 CAMBRIDGE &amp; GENERAL LINE ANTIQUES</p>	<p>EVELYN M. ALLEN 135 Cynthia Street Heath, Ohio 43055 Mail Order &amp; Shows 614-522-1635 SPECIALIZING IN CAMBRIDGE GLASS!</p>	<p>JEWELL'S TREASURE BOX 6141 No. State 60, NW McConnelsville, Ohio 43725 (mail order or shows only) STERLING &amp; PLATE FLATWARE Specializing in Older Patterns</p>



# T Shirts by Brandt

AN IDEAL GIFT FOR THE CAMBRIDGE COLLECTOR  
A YELLOW T-SHIRT WITH A BLACK CAMBRIDGE SEAL!

FIRST QUALITY — SPECIAL \$7.50 each  
(includes postage and handling)

The T-Shirt you saw at the Cambridge  
Convention is now available in men's and  
women's sizes!

ORDER NOW: Send your check or money order (\$7.50 for each shirt) to:

T-Shirts by Brandt, 1305 N. W. 1st Avenue, Fort Lauderdale, Florida 33311

Please specify size when ordering: WOMEN: sm., med., lg. MEN: med., lg., x-lg.

CLEVELAND AREAS 2nd  
Depression / Vintage Glass Show and Sale

## FEATURING DEPRESSION GLASS

Heisey - Cambridge

Fostoria - New Martinsville - Duncan Miller

GUESTS: Gene Florence, Nora Koch  
Bill and Phyllis Smith

Sponsored by

WESTERN RESERVE DEPRESSION GLASS CLUB

AT THE GREAT HALL  
AIRPORT HOLIDAY INN

16501 Brookpark Road (Rt. 17)

Exit 10 Off Turnpike - Airport Exit N Off I - 71

Nov. 4, 1978 10 AM - 6 PM

Nov. 5, 1978 11 AM - 5 PM

Bring Items You  
Want Identified

Donation \$ 1.25  
25¢ Off With Ad

National Cambridge Collectors, Inc.  
Post Office Box 416  
Cambridge, Ohio 43725

FIRST-CLASS MAIL  
U.S. POSTAGE  
PAID

So. Vienna, Ohio  
45369  
Permit No. 15

FIRST CLASS MAIL



HAPPY THANKSGIVING!!