

# Cambridge



# Crystal Ball

ISSUE NO. 58

FEBRUARY 1978

Published monthly by the National Cambridge Collectors, Inc.  
To encourage and to report the discovery of the elegant and boundless product  
of the Cambridge Glass Company, Cambridge, Ohio

Thoughts from the President - - - -

With the holidays behind us, we now have time for serious consideration of recent activities as well as for some of our upcoming attractions.

We can now report that the bookend project was successful with a capital S, and that all of the bookends have been sold. The Project Committee can certainly take a bow for a job well done.

Discussion with our publisher the other day revealed that all of the first printing of our 1930-34 Reprint has been sold. We are now working on sales of the second printing which was delivered to him on January 9th. The first printing total was slightly over 4900 copies, and this second one just over 2100 copies. Sales are holding very well.

By the time this issue reaches you, copy for the 1949-1953 Reprint will be in the publishers hands. It will have a total of 302 pages, and it will picture almost 3000 items. Most of the items pictured in this book will be of the varieties that did not carry trademarks, other than paper labels, so it should prove to be very beneficial to most collectors as an identification aid. We are looking forward to it's release with much anticipation. The date of the release and the price will be announced as soon as these facts are known.

This month marks another regular Quarterly meeting and an additional opportunity for many of you to enjoy an informative program and discussion of Cambridge glass.

Our meeting will be held on February 25th, at Baker's Restaurant. This will be a Buffet dinner meeting, starting with a social hour at 6:00 PM, dinner at 6:45 PM, and the Quarterly meeting will follow at approximately 7:45 PM. A reservation form has been enclosed for your convenience.

If it is not possible for you to attend the dinner, please feel free to come for the meeting and program. Our Program Committee reports that the program will be a display and a discussion of Figural Flower holders. They hope to have examples of each style, base type, and color available for your study.

This would also be an excellent time for you to mark your calendar for the Convention and the Third Annual Antique Show and Sale. These events will be held June 23, 24, and 25th. The Show will be held at the Guernsey Catholic High School and most of the Convention activities will be held at the Cambridge Country Club. More details will be provided as they are firmed up.

Our Museum Committee is still working very hard trying to make 1978 "the Year of the Museum".

See you the 25th,  
*Bice*

#### MEMBERSHIP RENEWAL NOTICE

If the date on your address label is - - 2 - 78  
This is your LAST ISSUE of the  
CRYSTAL BALL. Please renew NOW!

# CAMBRIDGE CRYSTAL BALL

Official publication of National Cambridge Collectors, Inc., a non-profit corporation with tax exempt status. Published once a month for the benefit of its members. Membership is available for individual members at \$10 per year and additional members (12 years of age and residing in the same household) at \$3 ea. All members have voting rights, but only one CRYSTAL BALL will be mailed per household.

Back issues of the CRYSTAL BALL are available to members only, at a cost of 60¢ ea. or 12 issues for \$7.

## 1977-78 Officers & Committee Chairpersons

PRESIDENT ----- William C. Smith  
VICE-PRESIDENT ----- David B. Rankin  
SECRETARY ----- Janice Y. Hughes  
TREASURER ----- Doris J. Isaacs  
SERGEANT-AT-ARMS ----- David B. Rankin  
BUDGET & FINANCE ----- William C. Smith  
BY-LAWS ----- David B. Rankin  
CONVENTION -----  
MEMBERSHIP ----- Josephine A. Barstow  
MUSEUM ----- Arnold Lynd  
PROGRAM & ENTERTAINMENT - Charles A. Upton  
PROJECT ----- David G. McFadden  
PUBLICITY ----- John F. Rettig  
STUDY GROUP ADVISORY ---- Janice Y. Hughes

1978 ANTIQUE SHOW ----- Gerald R. Landman

CRYSTAL BALL Editor ----- Phyllis D. Smith

## CLASSIFIED ADVERTISING RATES

5¢ per word \$1.00 minimum

We cannot mix type size in classified advertisements. Abbreviations and initials will count as words. Payment in full must accompany all ads.

## DISPLAY ADVERTISING RATES

	Members	Non-Members
1/8 page -----	\$ 4.00	\$ 6.00
1/4 page -----	7.00	10.00
1/2 page -----	12.00	18.00
3/4 page -----	17.00	25.00
Full page -----	22.00	33.00

## DEALERS DIRECTORY

1" ad ----- \$6.00 for 6 months

Cambridge CRYSTAL BALL assumes no responsibility for items advertised and will not be responsible for error in price, description or other information.

Advertising copy must be in our hands by the 15th of each month to assure publication in our next issue. Advertisements containing reproductions will not knowingly be accepted unless clearly stated.

PLEASE ADDRESS ALL CORRESPONDENCE TO

Cambridge CRYSTAL BALL  
National Cambridge Collectors, Inc.  
P. O. Box #416  
Cambridge, Ohio 43725

PLEASE NOTIFY US IMMEDIATELY OF ANY CHANGE  
IN YOUR ADDRESS!

Please enclose a self-addressed, stamped envelope when requesting information!!

# STUDY *Club News*

## HOKEY-POKEYS

The Christmas meeting of the Hokey-Pokeys was held at the home of Joy and Dave McFadden in Galena, Ohio, on Saturday, December 17, 1977. All Hokey-Pokey's were present along with eight guests from the Cambridge Squares.

Once again we proved that desirable Cambridge glass can be obtained for \$5.00. Our gift exchange included: moonlight blue individual creamer and sugar in the Martha pattern; emerald green (light) candy jar with cover in Honeycomb pattern; frosted crystal Everglades vase; pair of moonlight blue 4" Star candleholders; crystal Cambridge Square creamer and sugar; crystal Cornucopia vase; pair of crystal 2½" Star candleholders; and two #3500 stem goblets with amber tops.

"Show and Tell" included sixteen items which were the basis of our discussion. We tried our best to identify each item as to color, pattern, decoration (if any), and year of production. We utilized all available catalogs and advertising in our efforts toward accuracy.

Some of the items examined included: a Nude stem claret etched #758; mulberry powder box with domed cover (no knob); an ebony Turtle flower block; a crystal Tally Ho comport with orange silk screen D1007 and platinum edge; crystal Martha Washington juice glass etched Vintage; and a crystal #3130 cordial rock crystal engraved #812 Cordelia.

Our next meeting will be held at the home of Vicki and Frank Wollenhaupt in Dayton, Ohio, on Friday, January 20, 1978.

Submitted by Sue Rankin

## CAMBRIDGE SQUARES

Next meeting will be held on Friday, January 20, 1978, in the home of Doris and Roy Isaacs, Cambridge, Ohio. The topic for study will be labels and trademarks.

Submitted by Doris Isaacs

---

# SeaShell

Made in Sea Shell Coral, Carmen, Amber,  
Royal Blue, Forest Green and Amethyst

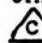
---

by Lynn Welker

The Seashell Line was one of Cambridge's most successful creations. It was introduced to the trade early in 1935 and was well received.

Early advertising described the line as a new Cambridge creation of marine motifs with shells predominating and including dolphin and sea maid motifs. The Seashell line was one of Cambridge's most enduring pressed patterns, including a large number of different shapes and colors. Seashell was developed into a large line of about 46 items at the height of its popularity in the 1940's. A somewhat reduced line was produced until the closing of the Cambridge Glass Company.

At one time, in the early 1940's, the line was produced entirely in crystal and was marketed as Krystolshell. All items known in the Seashell line are pictured on these pages, with the exception of two plates (mentioned later in this article) and the Nude Lady candlesticks pictured in last month's article on the Statuesque Line. The candlesticks and #40 Nude Lady flower or fruit center were incorporated in both lines and advertised as such by the Cambridge Glass Company.

Many of the shell shaped pieces in this line are signed in the mold with the . The plates and nude comports can be found signed to the side of the shell where the edge is flat (on top of the plate). The shell comports, bowls and ashtrays may be found signed inside the item where the flat edge of the shell curls upward. This mark was allowed to wear off the molds and was not replaced. Therefore, some of the later colors, such as mandarin gold, milk-glass and emerald green will not be signed in the Seashell items.

The Seashell Line was available in moonstone (crystal frosted on one side), crystal, crown tuscan, coral (pale transparent crown tuscan with fiery blue highlights), carmen, royal blue, amber, forest green and amethyst. However, these transparent colors are seldom seen in Seashell line items although they were production colors.

The following is a list of exceptions or additions to these colors of pieces in the Seashell Line:

#1 - 5" Bread and Butter plate: also milk-glass, experimental colors of medium blue opaque, dark blue opaque and pale custard. (A similar 5½" bread and butter plate not shown here, was manufactured. It was perfectly round - without the flat edge, and was produced in all the Seashell line colors as well as an experimental pale green opaque.)

#2 - 7" Salad plate: also milkglass.

#8 - 11" Salad bowl: also milkglass.

#9 - 13" Salad bowl, shallow: also experimental pale custard.

#11 - 7" Nude Comport: also windsor blue, mandarin gold and emerald green.

#110 - 4½ oz. Seafood Cocktail: also milk-glass.

#21 - 6" ftd. Candy Box and Cover: also windsor blue and milkglass.

#15 - 6" Comport and #16 - 7" Comport: also windsor blue and milkglass.

#18 - 10" 3-toed Bowl: also windsor blue, and experimental deep blue opaque.

#14 - 9" Comport and #12 - 8" Comport: also windsor blue and milkglass.

#17 - 9" 3-toed Bowl: also windsor blue and milkglass.

#47 - 9" Cornucopia Vase: also windsor blue.

#36 - Cigarette Box & Cover (small size):

continued on page 7

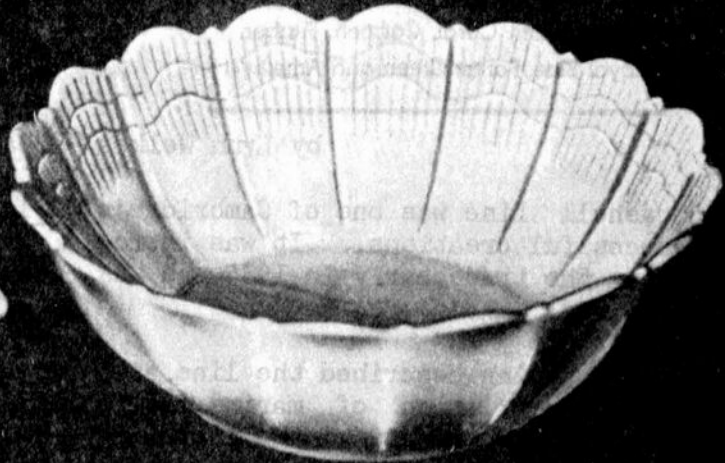




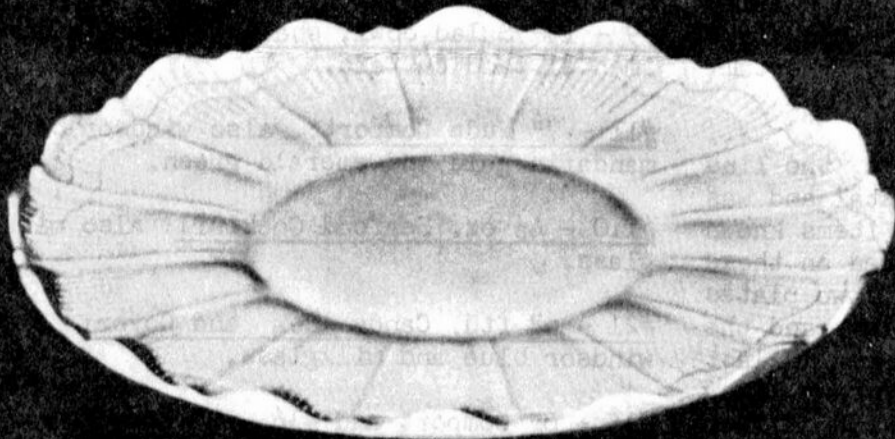
# Seashell



30-9 in. 4 Toed 3 Compt. Relish



8-11 in. Salad Bowl



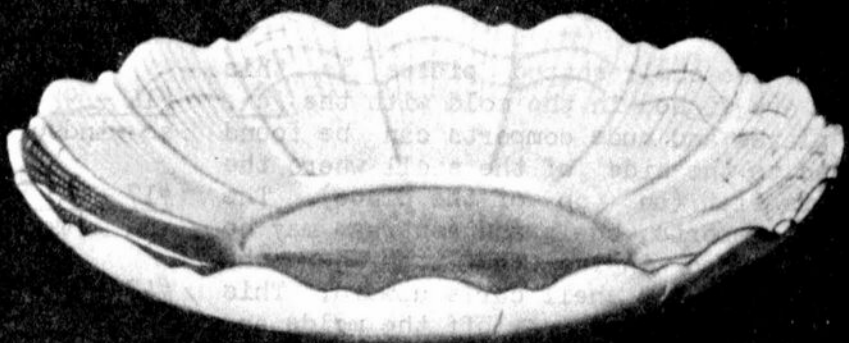
7-14 in. Sandwich Plate



1-5 in. B. & B. Plate



2-7 in. Salad Plate

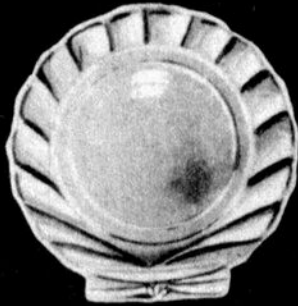


9-13 in. Salad Bowl, Shallow

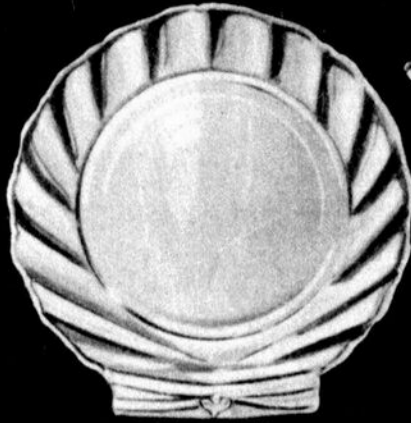
JANUARY 1, 1940



## KRYSTOLSHELL



1 5 in. B & B Plate



2-7 in. Salad Plate



10 5 in. Comport



11 7 in. Comport



66-4 in. Candlestick



110-4 1/2 oz. Sea Food Cocktail



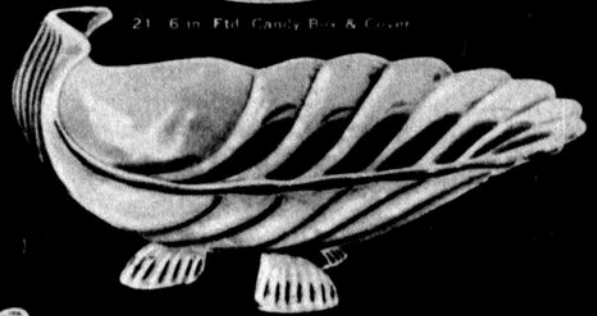
21 6 in. Ft'd. Candy Box & Cover



15 6 in. Comport



16 7 in. Comport



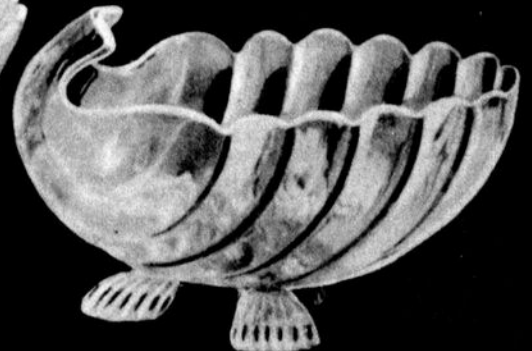
12 10 in. 3 Toed Bowl



14 9 in. Comport



12 8 in. Comport



17 9 in. 3 Toed Bowl

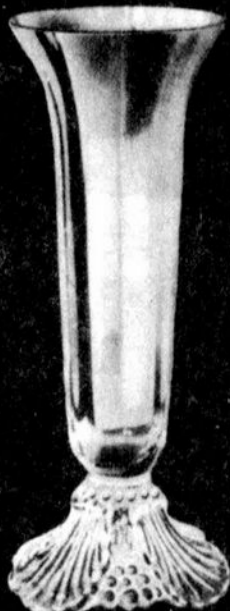
JANUARY 1, 1940



## KRYSTOLSHELL



47—9½ in. Cornucopia Vase



49—10½ in. Belled Vase



48—9 in. Belled Vase



36—Cigarette Box & Cover  
4 Toed 4½ x 3½ in.



35—Cigarette Box & Cover  
4 Toed 4½ x 3½ in.



34—3 in. 3 Toed Ash Tray



46—7½ in. Shell Flower Holder



44—6 in. Flower Center



32—2¼ in. 3 Toed Ind. Nut Dish



38—4½ in. 3 Toed Bon Bon



37—4 in. 3 Toed Ash Tray



33—4 in. 3 Toed Ash Tray



40—10 in. Flower or Fruit Center



42—8 in. Flower Center

JANUARY 1, 1940



continued from page 3

not produced in all production colors - only crystal, moonstone, windsor blue, moonlight blue and LaRosa pink.

#37 - Cigarette Box & Cover (large size): not produced in all production colors - only crystal, moonstone, moonlight blue, LaRosa pink, ebony, mandarin gold, emerald green and milkglass.

(Both cigarette boxes were also available in the Alpine finish, partially frosted on the pattern, as part of the Caprice Line.)

#46 - 7 $\frac{1}{2}$ " Shell Flower Holder (commonly called the Snail Vase): also milkglass and windsor blue.

#34 - 3" 3-toed Ashtray: not all Seashell colors, but crystal, crown tuscan, moonlight blue, pink, pistachio, mandarin gold and mocha.

#32 - 2- $\frac{3}{4}$ " 3-toed Individual Nut Dish: also windsor blue.

#33 - 4" 3-toed Ashtray: not all Seashell colors, but crystal, moonstone, moonlight blue, crown tuscan, coral, windsor blue, LaRosa pink, violet, mandarin gold, milkglass and emerald green.

(Ashtrays were also available in Alpine finish as a part of the Caprice Line.)

#40 - 10" Flower or Fruit Center: also windsor blue and moonlight blue.

#50 - 8" Dolphin Candlestick (also made with bobèche locks on the candlecups for bobèches and prisms): also ebony, milkglass and with flashing over crystal.

#70 - 7" Candlestick w/Prism (also part of the Caprice Line): only made in crystal, moonlight blue, LaRosa pink or any of the three with Alpine finish.

#70 - 3 $\frac{1}{2}$ " Turtle Flower Block: made only in crystal, crown tuscan and ebony.

#1269 - 6" 2-holder Candelabrum (also part of the Caprice Line): available with or without the bobèche locks - also heather-bloom, windsor blue, gold krystol, ebony, mandarin gold and emerald green.

#29 - 8 $\frac{1}{2}$ " 2-compartment Relish: no report of this being seen, however it was definitely made in crystal and moonstone.

#45 - 52oz. Jug (commonly called the Snail water pitcher): not known to have been made in crown tuscan or coral.

#1358 - 7" 3-holder Candelabrum w/Prism: only crystal, moonstone, moonlight blue.

#31 - 8 $\frac{1}{2}$ " Oval Shell: also windsor blue, mandarin gold, emerald green, milkglass.

#112 Sugar & Creamer, #111 - 5" Bon Bon, and Plate (not pictured, but made from the same mold as the Bon Bon): made only in crystal, moonstone and milkglass.

#213 - 2- $\frac{3}{4}$ " ftd. Ashtray (this was not actually a part of the Seashell Line, but was a part of the Caprice Line), a slot at the back edge of the shell was intended to hold a placecard: made only in moonstone, crystal, windsor blue, moonlight blue, LaRosa pink, milkglass, and Alpine finish.

(For pictures of #31, #112, #111, and #213 see page 9.)

The #17 and #18 3-toed shell bowls were made from the same mold. The #15 comport was definitely sold without a lid although it carries the ledges just inside the shell to hold a lid like the #21 candy box and cover. Both these and the #16 comport were all made from the same mold. The #12 and #14 comports were also made from one mold.

The #33 ashtray, #37 ashtray and #38 bon bon were all produced from the same mold and manipulated through the use of tools into the three different shapes. These ashtrays can be found with or without the shell detail inside them. The #32 2- $\frac{3}{4}$ " nut dish has the inner shell detail while the #34 3" ashtray seldom does. The #213 2- $\frac{3}{4}$ " ashtray lacks the shell detail always.

The #42 8" flower center was available in transparent colors with either a crystal or colored foot. One unusual variation is the #18 10" 3-toed bowl which has been

continued on page 9



# The Cambridge Glass Company



## KRYSTOLSHELL



50 8 in. Dolphin Candlestick



70-7 in. Candlestick w/Prism



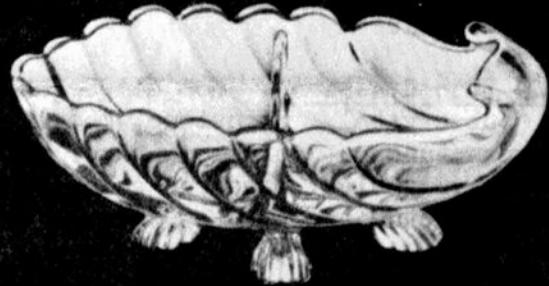
66-4 in. Ftd. Candlestick



70-3 1/2 in. Turtle Flower Block



1269-6 in. 2 Holder Candelabrum



29-8 1/2 in. 2 Compt. Relish



45-52 oz. Jug



1358-7 in. 3 Holder Candelabrum w/Prism

JANUARY 1, 1940

Cambridge, Ohio - - - U. S. A.

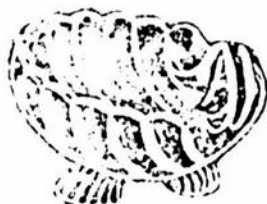
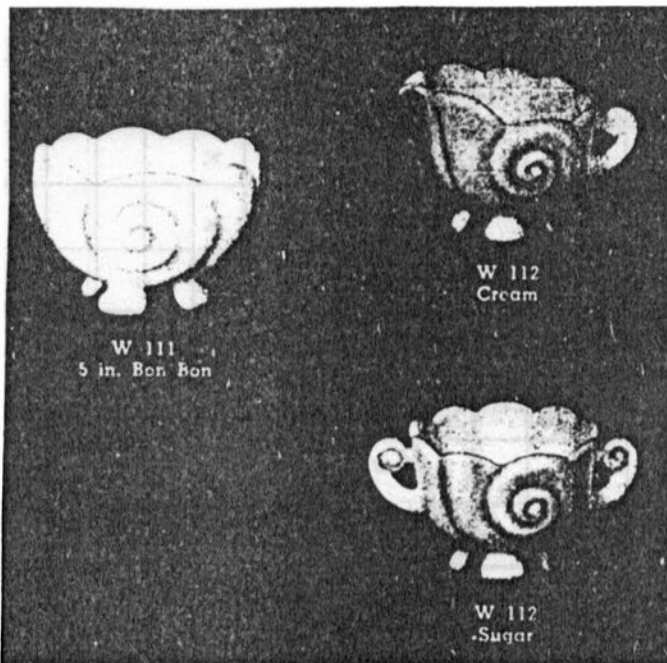


continued from page 7

seen in crystal with a fancy crimped or scalloped edge manipulated by a tool. The #33 4" and #213 2-3/4" ashtrays have been



SS 31  
8 in. Oval Dish. 4 Fid.



#213

seen with a candlecup inserted inside the shell. Both are in the windsor blue color.

Decorations on Seashell items are generally limited to the Charleton enamel floral designs, the main designs usually being roses (called Blue Mist), or a large gardenia, on crown tuscan or crystal.

Charleton decorations have been seen on a very few emerald green and milkglass Seashell pieces, but these should be considered rare.

One unusual decoration found on the #14 and #16 shell comport is of the typical Charleton enamel floral and gold trim with a center scene of a boat on a lake and a house done in enamel. Another unusual Charleton design was that of enamel violets on the #49 shell base vase. The decoration was trailed around the vase somewhat like the color on a barber pole. This decoration was very attractive and few examples are known.

Some milkglass and crown tuscan Seashell pieces were decorated with gold trim edges or gold stippling. One rare variation of this is a Seashell candy box and cover with gold trim edges and overall shaded blue enamel decor on crown tuscan. Crystal Seashell pieces may also be found with sterling silver decorations of flowers or clover. One shell ashtray is known with Lotus Glass Company decoration of all over etched and gold encrusted flowers.

The rarest pieces (those items hardest to find regardless of color) are the #38 4 1/2" 3-toed bon bon, #37 4" 3-toed ashtray, #29 8 1/2" 2-compartment relish, #70 turtle flower block, and the #45 52 oz. jug.

Of course, carmen, royal blue, and windsor blue items in the Seashell Line are considered rare and very desirable. Amber, amethyst and forest green pieces are seldom seen in this line despite the fact that these were production colors.

---

Happy Hunting and may your treasure trove include a raft of SEASHELL.



FIGURAL FLOWER FROGS	CRYSTAL	CRYSTAL SATIN	AMBER	AMBER SATIN	MOONLIGHT BLUE	MORNING BLUE SATIN	RITZ BLUE	WILLOW BLUE	CARMEN	EMERALD (MIXE) GREEN SATIN	EMERALD GREEN SATIN	FOREST GREEN	MAJESTIC GOLD	TEACHLO	TEACHLO SATIN	DIAMANT'S PINK	DIAMANT'S PINK SATIN	EBONY	CROWN TUSCAN	IVORY	MILK
8 1/2" DRAPED LADY #2	X	X	X	X	X	X	X	X	X	X	X	X	X	X	X	X	X	X	X	X	
#3	X	X										X	X								
OVAL	X													X							
13" DRAPED LADY #1	X	X	X	X				X		X	X			X	X	X	X		X		
#2	X	X	X	X	X	X				X	X			X	X	X	X		X		
6" BASHFUL CHARLOTTE #2	X	X								X	X			X	X	X	X				
11" BASHFUL CHARLOTTE #2	X	X						X		X	X			X	X	X	X			X	
ROSE LADY #1	X	X	X	X						X	X			X	X	X	X				
#2	X	X	X	X						X	X			X	X	X	X				
MANDOLIN LADY #2	X	X	X	X	X					X	X			X	X	X	X			X	
TWO KID #2	X	X	X	X	X			X		X	X			X	X	X	X			X	
GEISHA (2 BOW) SCREEN BASE	X		X				X							X						X	
GEISHA (1 BOW) SCREEN BASE	X																				X
9" HERON #3	X																				
13" HERON #2	X																				
BLUE JAY #3	X				X																
BLUE JAY CANDLE HOOK	X				X				X												
SEA GULL #2	X																				
EAGLE #2	X		X	X																	
BIRD (PENGUIN) #2	X																				
BUDDA IVORY BASE			X																		X
TURTLE	X																				X



# reproductions —

by Russell Vogelsong

We hear so much today of reproductions. Whether it is furniture, glassware, pottery or art. The finer things in life will always be reproduced. Glass companies of yesteryear were no exception. The Cambridge Glass Company chose to reproduce some of the finer antiques in glass, we believe you will find this article of interest.

Cambridge's first line offered was "NEARCUT", imitation cut glass. Few could afford cut glass of the period, but almost anyone could buy NearCut. With virtually hundreds of items to choose from, NearCut found a place in many homes, and is a popular collector's item in both clear and iridized (Carnival) colored crystal.

Another popular line was the Gadroon pattern (pressed) line of wares. It may be found in a variety of colors and etchings, and was a copy of the fine 300 year old silver service from England.



GADROON

The Cambridge Rams Head bowl was an exact replica of an old Wedgewood pattern bowl of England also.

The different size "Doulton" pitchers were also in the Cambridge line. These were a direct copy of the famous Royal Doulton pitcher, again copies from Englishware. (see Doulton Jug on next page)



LEXINGTON

Cambridge also used historic and romantic names to headline their wares. Lexington was the name of a heavy pressed line in honor of the Minute Men. Pictured in the "Lexington" section of the Cambridge catalog is the Bronze statue of a Minute Man and the stone engraved with the date 1630.

I am sure these historic names were used to give Cambridge Glass more buying appeal with the public.

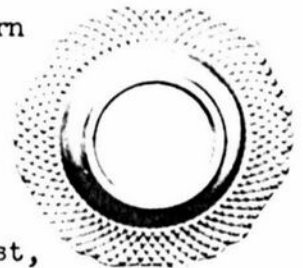
Mount Vernon was also advertised as an early American pressed pattern in the sawtooth type glass.



MARTHA WASHINGTON

Martha Washington was the name given to an early American thumbprint pattern, and it was a big seller.

So it is no different, as in years past, collectors held their breath, hoping that the Cambridge Glass Company, along with other glass companies, would not lower the value of their highly prized collections, by copies of old glassware.



MT. VERNON

collections,

(Reprinted from Vogelsong Newsletter Vol. I, No. 3, September 28, 1971.)

# FRANK MALONEY

40 Gray Street, Boston, Mass. 02116 ---- Phone - 617-426-1048

- |     |  |         |
|-----|--|---------|
| 1.  | #533 Mayonnaise bowl, dianthus pink, #760 etching -----  | \$10.00 |
| 2.  | #3400-67 12" Celery & Relish, crystal w/Wildflower etch., gold edge -  | 15.00   |
| 3.  | #274 10" Vase, moonlight blue, Betty etch, gold edge -----   | 25.00   |
| 4.  | #120 Caprice Relish, 6½" 2-compt., dianthus pink -----   | 12.00   |
| 5.  | #97 Wheat Sheaf tall Celery, small bottom nick (WI-117) -----  | 15.00   |
| 6.  | #532 6½" Comport, ivory (NCC-41) -----   | 25.00   |
| 7.  | #6004 12" Vase, royal blue with sticker -----  | 18.00   |
| 8.  | #101 32 oz. Cocktail Shaker, Wheat cutting -----   | 35.00   |
| 9.  | #7966 Rondo Goblet (3) ----- Each -----  | 7.50    |
| 10. | #1402 7" low ftd. Comport, crystal w/Elaine etch. -----  | 10.00   |
| 11. | #3120 9 oz. Goblet, dianthus pink bowl, crystal stem (3) Each -----  | 7.50    |
| 12. | #1090 7" tall Comport, crystal w/unknown cutting (NCC-27) -----  | 17.50   |
| 13. | #3450 Nautilus 3-pc. Set, amber Shakers, crystal Tray (NCC-34-1) ----  | 16.00   |
| 14. | #870 11" handled Sandwich Tray, amber w/Cleo etch. -----   | 8.00    |
| 15. | #P499 Calla Lily Candlesticks, mandarin gold ----- Pair -----  | 25.00   |
| 16. | Stradivari 3½ oz. Cocktail, dianthus pink bowl -----   | 10.00   |
| 17. | #3400/32 oz. Decanter & 6 #1901 2 oz. Tumblers, amber, orig. box ----  | 45.00   |
| 18. | Chantilly etch. on plain pulled Stems - 8 Cocktails, 8 tall<br>Sherbets/Champagnes, 8 Goblets ----- Each ----- | 10.00   |

INSURANCE AND POSTAGE EXTRA

3400/152. 76 oz. Jug



11" CARMEN JAPONICA VASE

MAIL BIDS!

(Minimum Offer \$750)

Offers accepted for 10 days following postmark date on this CRYSTAL BALL. (Ref: shape only - NCC Reprint, page 51, #278 - has Japonica acid stamp.)

Doris Isaacs, R.D.#5, Cambridge, Ohio 43725.- Phone 614-439-3241.

## 10th Annual Antiques Show and Sale

Sponsored by

Beta Sigma Phi Sorority of Reynoldsburg, Ohio

Saturday, March 11, 1978 - 11 a.m. - 9 p.m.

Sunday, March 12, 1978 - 12 Noon - 6 p.m.

Arts and Crafts Building—Ohio State Fairgrounds

Exit 17th Ave. I-71 Columbus, Ohio

Show Chairman  
Mrs. Murray Youtz  
1519 Loxdale Drive

Reynoldsburg, Ohio 43068

Benefit: Reynoldsburg Police Dept. and Friends of Pickerington Park

SNACK BAR

Donation \$1.25

Show Manager  
George Hoffman  
129 S. Fourth Street  
Nowark, Ohio

# SCRAPBOOK RAMBLES

by Doris Isaacs

In looking through an old Scrapbook that belongs to a dear friend, we came upon the two advertisements shown here.

The one showing "Gifts in Crystal" bears the date December, 1941 and a note that it was found in that particular copy of the "Ladies Home Journal" magazine.

The other ad had neither date nor notation as to where it was found. The best we can do on dating it is to say that it is probable that it appeared in a magazine sometime in 1949 or 1950.

**BRILLIANT CAMBRIDGE**

**GIFTS  
IN CRYSTAL**



Ivy Ball

Scotty Book Ends

Cocktail Shaker

Tall Compot

Star Ash Tray

Epergne

The choice of hand-made Cambridge crystal is ever a joy to both donor and receiver. Its richer brilliance is fascinating to the eye—its lovely modern designs are thoroughly smart in the most meticulous setting. Moderately priced at your Cambridge dealer's. The Cambridge Glass Company, Cambridge, Ohio.

**Cambridge**  
HAND-MADE CRYSTAL

## — Classified —

**MAIL BID:** 8" PINK SWAN, marked, feather detail, small nick on rim of bottom. No hold back - will be sold to highest bidder. Please send SASE with bid to: F. J. Baldock, 21 Dencaster Drive, Rome, Georgia 30161. BIDS CLOSE Feb. 20, 1978!!

**FOR SALE:** DECAGON DINNERWARE, plate etched Cleo, peachblo - 6 #865 cups and saucers, 7 #815 7½" plates, #979 sugar and creamer, 1 #870 11" center handled sandwich tray, and 7 #3077 footed tumblers, all for \$200. Eight (8) 9 oz. GEORGIAN TUMBLERS, amber, \$7.50 each. ROUND DINNERWARE, amber - 5 salad plates, 8 dessert plates, 4 cups and saucers (NCC 34 & 35), all for \$55. Will trade for items in #3400 Dinnerware, plate etched #744 Apple Blossom, peachblo. All Mint - Postage and Insurance Extra - SASE. Joe R. McCartney, P. O. Box 644, Flagler Beach, Florida 32036 - Phone 904-445-3737.

**WANTED:** BY COLLECTOR - anything in clear Diane or moonlight blue Caprice. Especially need 6½" and 9½" plates, salt and pepper, tall goblets and sherbets in Caprice. Also need #3122 low sherbets and wines, and cups and saucers in Diane. Donald Rugenstein, Route 5, Seymour, Ind., 47274.

**DUAL-PURPOSE  
4 PIECE  
STACKAWAY  
ASH TRAY SET**  
\$2.00 Postpaid

**NOW! An Ash Tray...  
NOW! A Candleholder**

These excitingly new ash trays stack away conveniently—always ready for use—and can be stacked twelve high. They are versatile too—turn them upside down and they "pinch-hit" as candleholders. Choice of three colors—clear crystal, Christmas green, or golden topaz. A set of four (one color to the set) at only \$2.00 postpaid. Check, Money Order, currency. No C.O.D.'s please. State color when ordering.



**NORTHWOODS' GIFTS**  
P. O. Box 25, Edina Branch, Minneapolis 10, Minn.



# DEALERS



# DIRECTORY

<p><b>ANTIQUÉ ALLEY</b> 24815 Broadway Bedford, Ohio 44146 216-232-7739 ---- Marie Spagnola CAMBRIDGE GLASS ROYAL DOULTON</p>	<p><b>BENICIA ANTIQUE SHOP</b> 305 First Street Benicia, California 94510 OPEN 11 AM - 5 PM Closed Monday</p>	<p><b>BUSY · BEE ANTIQUES</b> 1044 Dublin Road Columbus, Ohio 43215 Robert Cain 614-486-8320 CAMBRIDGE ---- BROWSER'S WELCOME</p>
<p><b>CHURCH STREET ANTIQUES</b> 6 Church Street Boston, Massachusetts 02116 George or Frank --- 617-226-1048 CAMBRIDGE, HEISEY, GENERAL LINE</p>	<p><b>Z. E. LOPES - 707-745-0978</b> VISIT HISTORIC BENICIA and its 28 shops Off Interstate #80 ----- ---- North of San Francisco</p>	<p><b>D &amp; D ANTIQUES</b> 184 East Kossuth Street (GERMAN VILLAGE) Columbus, Ohio 43206 DICK SLIFKO ----- 614-443-6020</p>
<p><b>THE DARROW COLLECTION</b> Highway 1A and Jungle Hut Road Flagler Beach, Florida 32036 Phone 904-445-3805 Mail Address: Rt. #1, Box 167 St. Augustine, Florida 32084</p>	<p><b>GREEN ACRES FARM</b> 2678 State Route 310 North Pataskala, Ohio, 43062 Sat. &amp; Sun. 1-6 PM ---- W. Bryan CAMBRIDGE &amp; HEISEY - 614-927-1882</p>	<p><b>FINDER'S KEEPER'S ANTIQUES</b> P.O. Box 303 P.O. Box 16023 Dayton, O. Columbus, O. 45401 43216 513-254-2937 614-965-1906 SPECIALIZING IN CAMBRIDGE GLASS!</p>
<p><b>SWISS HILLS COLLECTIBLES</b> Mary &amp; Wilbur Henderson 303 Guilford Avenue Woodsfield, Ohio 43793 Shows Only -- 614-472-1133 SPECIALIZING IN CAMBRIDGE GLASS!</p>	<p><b>HERITAGE ANTIQUES</b> Rt. #5, Cambridge, Ohio - 43725 614-439-3241 Take N. 8th St. Rd. (County Rd. #33) TURN LEFT AT RAILROAD TRACK</p>	<p><b>HOBBY HOUSE ANTIQUES</b> Rt. #1, Cambridge, Ohio - 43725 614-432-6971 - Frank &amp; Lena Take Rt. #209 W. From Cambridge To RT. #658 - NORTH 1½ MILES</p>
<p><b>HOFF - HAVEN ANTIQUES</b> 21 Half Moon Lane Tarrytown, New York 10591 Shows-Mail-No Lists-914-631-2140 CAMBRIDGE, ROSE IN SNOW FOSTORIA</p>	<p><b>GEORGE HOFFMAN ANTIQUES</b> 129 South 4th Street Newark, Ohio 43055 --- 614-345-8550 ---</p>	<p><b>D'MARIE'S ANTIQUES</b> US Rt. 1 - just South of Rt. 606 Thornburg, Virginia 22565 703-582-6220 ----- Jim Rankin OPEN EVERY DAY 10 AM to 6 PM</p>
<p><b>'OUR GLASS ANTIQUES</b> 20th CENTURY COLLECTIBLES featuring CAMBRIDGE GLASS Paul &amp; Ginny Henderson - Box 134 Iselin, NJ 08830 -- 201-283-3181</p>	<p><b>OLD TOLL GATE ANTIQUES</b> Route #5, Box 7X Milan, Illinois 61264 SPECIALIZING IN HAVILAND CHINA MATCHING SERVICE</p>	<p><b>PRESIDENTIAL COIN &amp; ANTIQUE CO</b> 6222 Little River Turnpike Alexandria, Virginia - 22312 Gail B. Levine ---- 703-354-5454 WANT LISTS SOLICITED-OPEN 6 DAYS</p>
<p><b>S &amp; J ANTIQUES</b> 5616 Hensel Woods Road Gahanna, Ohio 43230 Sue &amp; Jack Rettig - 614-855-1711 CAMBRIDGE GLASS OUR SPECIALITY</p>	<p>Use Schleigers book numbers or send saucer for pattern match. SASE APPRECIATED Marie Baker ----- 309-787-2392 GENERAL LINE OF ANTIQUES</p>	<p><b>PUMPHOUSE ANTIQUES</b> 111 E. Main St., Box 433 West Branch, Iowa 52358 Closed Monday - Sept. thru May 319-643-2879 - or - 319-337-5096 OUR SPECIALTY GLASS EARLY &amp; LATE</p>
<p><b>A. SPRINGBORN</b> P. O. Box E. G. #962 Melbourne, Florida - 32935 Shop #34, Webster, Florida OPEN EVERY MONDAY 305-254-7439</p>	<p><b>THE GLASS CUPBOARD</b> 39 Shire Oaks Drive Pittsford, New York 14534 Marcia Ellis 716-586-7596 CAMBRIDGE ONLY --- SASE FOR LIST</p>	<p><b>M &amp; M ANTIQUES &amp; COLLECTIBLES</b> 310 N. Main -- Box 417 Canton, Kansas 67428 The Martin's ----- 316-628-4705 SPECIALIZING IN CAMBRIDGE GLASS!</p>
<p><b>WOLFE'S GLASS EMPORIUM</b> 330 Woodlawn Avenue Cambridge, Ohio 43725 John Wolfe ----- 614-432-2590 WED. &amp; FRI. 1-5PM or APPOINTMENT</p>	<p><b>THIS 'N' THAT PLACE</b> 101 South Street Chagrin Falls, Ohio -- 44022 Lue Koerper ----- 216-247-4938 OPEN THURS.-SAT.---10 AM - 5 PM</p>	<p><b>YOU CAN ADVERTISE YOUR ANTIQUÉ SHOP HERE!</b> 1 inch - \$6 for six months</p>

# National Cambridge Collectors, Inc.

P. O. Box 416, CAMBRIDGE, OHIO 43725



*A nonprofit organization dedicated to the preservation and study of Cambridge Glass*

**You Are Cordially Invited  
To Become A Member Of The  
NATIONAL CAMBRIDGE COLLECTORS, INC.**

Benefits derived from membership include: receipt of our club publication, The Cambridge CRISTAL BALL; informative Quarterly Meetings; Antique Shows; Auctions; and other special events.

The Cambridge CRISTAL BALL is published the first of each month. This newsletter contains educational and interesting articles, questions and answers, information on reproductions and reissues, notices of all club functions, classified advertisements, dealers directory and many other features of interest to collectors of Cambridge glass.

Yearly dues are \$10.00 for Individual Members and \$3.00 for each Associate Member. All members have voting rights, but only one issue of the CRISTAL BALL will be mailed per household.

Name (please print) \_\_\_\_\_ \$ 10.00

Mailing Address \_\_\_\_\_

City \_\_\_\_\_ State \_\_\_\_\_ Zip \_\_\_\_\_

Associate Members: (Must be at least 12 years of age and living in the same household.)

1. Name \_\_\_\_\_
2. Name \_\_\_\_\_
3. Name \_\_\_\_\_

Associate Members @ \$ 3.00 each \$ \_\_\_\_\_

Please make check payable to: National Cambridge Collectors, Inc.

TOTAL AMOUNT ENCLOSED: \$ \_\_\_\_\_

Recommended by \_\_\_\_\_

## WATCH!



YOUR CALENDAR FOR THESE IMPORTANT N.C.C. DATES. YOU WON'T WANT TO MISS ANY OF THESE IMPORTANT EVENTS!

**SATURDAY, FEBRUARY 25, 1978 - N.C.C. Quarterly Meeting.** Social hour begins at 6 PM — Dinner at 6:45 PM, and Meeting at 7:45 PM. To be held at Bakers Restaurant, on Route #40, at Exit #164 (Norwich).

**1978 NCC CONVENTION and 3rd ANNUAL ANTIQUE SHOW and SALE.** To be held the weekend of June 23, 24, and 25, 1978. MARK YOUR CALENDAR NOW! Complete details will be coming soon!!

NATIONAL CAMBRIDGE COLLECTORS, INC.  
P. O. Box #416  
Cambridge, Ohio 43725

**FIRST CLASS MAIL**