

Cambridge



Crystal Ball

ISSUE NO. 56

DECEMBER 1977

Published monthly by the National Cambridge Collectors, Inc.
To encourage and to report the discovery of the elegant and boundless product
of the Cambridge Glass Company, Cambridge, Ohio



MERRY CHRISTMAS TO ALL

and Sincere Good Wishes for Happiness

All Through the Coming Year

Your Officers, Board of Directors,
and Crystal Ball Staff



CAMBRIDGE CRYSTAL BALL

Official publication of National Cambridge Collectors, Inc., a non-profit corporation with tax exempt status. Published once a month for the benefit of its members. Membership is available for individual members at \$10 per year and additional members (12 years of age and residing in the same household) at \$3 ea. All members have voting rights, but only one CRYSTAL BALL will be mailed per household.

Back issues of the CRYSTAL BALL are available to members only, at a cost of 60¢ ea. or 12 issues for \$7.

1977-78 Officers & Committee Chairpersons

PRESIDENT ----- William C. Smith
VICE-PRESIDENT ----- David B. Rankin
SECRETARY ----- Janice Y. Hughes
TREASURER ----- Doris J. Isaacs
SERGEANT-AT-ARMS ----- David B. Rankin
BUDGET & FINANCE ----- William C. Smith
BY-LAWS ----- David B. Rankin
CONVENTION -----
MEMBERSHIP ----- Josephine A. Barstow
MUSEUM ----- Arnold Lynd
PROGRAM & ENTERTAINMENT - Charles A. Upton
PROJECT ----- David G. McFadden
PUBLICITY ----- John F. Rettig
STUDY GROUP ADVISORY ----- Janice Y. Hughes

1978 ANTIQUE SHOW ----- Gerald R. Landman

CRYSTAL BALL Editor ----- Phyllis D. Smith

CLASSIFIED ADVERTISING RATES

5¢ per word \$1.00 minimum

We cannot mix type size in classified advertisements. Abbreviations and initials will count as words. Payment in full must accompany all ads.

DISPLAY ADVERTISING RATES

| | Members | Non-Members |
|-----------------|---------------|-------------|
| 1/8 page ----- | \$ 4.00 - - - | \$ 6.00 |
| 1/4 page ----- | 7.00 - - - | 10.00 |
| 1/2 page ----- | 12.00 - - - | 18.00 |
| 3/4 page ----- | 17.00 - - - | 25.00 |
| Full page ----- | 22.00 - - - | 33.00 |

DEALERS DIRECTORY

1" ad ----- \$6.00 for 6 months

Cambridge CRYSTAL BALL assumes no responsibility for items advertised and will not be responsible for error in price, description or other information.

Advertising copy must be in our hands by the 15th of each month to assure publication in our next issue. Advertisements containing reproductions will not knowingly be accepted unless clearly stated.

PLEASE ADDRESS ALL CORRESPONDENCE TO

Cambridge CRYSTAL BALL
National Cambridge Collectors, Inc.
P. O. Box #416
Cambridge, Ohio 43725

PLEASE NOTIFY US IMMEDIATELY OF ANY CHANGE IN YOUR ADDRESS!

Please enclose a self-addressed, stamped envelope when requesting information!!

Club News

National Cambridge Collectors, Inc.
Quarterly Meeting and
First Commemorative Dinner
November 12, 1977
Bakers Restaurant, Norwich, Ohio

The meeting was called to order at 8:20 PM by President Smith. In attendance were 11 Board members, special guests Mr. and Mrs. Tom Mosser, and 72 Club members and guests from three states. The minutes of the August 5th Quarterly meeting were read by Janice Hughes and approved. The Treasurer's Report was given by Doris Isaacs, showing the Club has a balance of \$3,779.05 and the Museum Fund \$16,580.46.

OLD BUSINESS:

President Smith advised the pricing is almost complete on the 1949-54 Catalog Reprint and will be submitted to the publisher soon.

NEW BUSINESS:

President Smith advised that Mr. Charles Upton will be the Chairman for the Nominating Committee. The committee is incomplete at this time, but names will be given to the Secretary later.

COMMITTEE REPORTS:

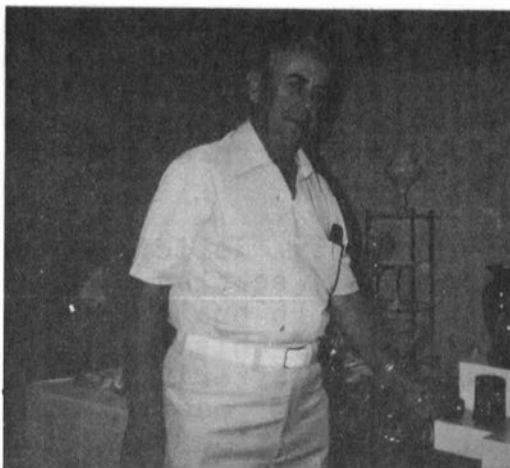
BY-LAWS: No report.

CRYSTAL BALL: Editor Phyllis Smith reported the CRYSTAL BALL is now mailed to 400 members and since the Dealers Directory page is almost filled, it has been moved to an inside page. She stated that she would welcome suggestions for future articles, more prices for the Prices - Here & There column, and hopes to start a column on personal collections of members soon.

continued on page 11

Let's Get Acquainted

by Phyllis Smith



Let us introduce you to one of our newest members of the Board of Directors -- Mr. Arnold Lynd.

Arnold was elected to serve on the Board of Directors in June of this year. He was appointed to the job of Museum Chairman in July and has been diligently working toward our goal of making this our "Year of the Museum". In his report at the November Quarterly meeting, he expressed his expectations of having a new address for N.C.C. before another year comes to an end.

A life time fruit grower, Arnold is owner of Lynd's Fruit Farm, Inc., Pataskala, Ohio. He is the third generation of his family to be in this business, and his children have followed him in becoming the fourth generation.

He and his lovely wife Dorothea are the parents of three sons and one daughter, ranging in age from 24 to 35. On September 23rd, next year, they will celebrate their 39th Wedding anniversary.

A busy man, Arnold never agrees to take a job unless he feels he has the necessary time to devote to seeing it through.

In the past he has held positions of responsibility in many organizations. Some of these include:

Past Master of the Pataskala Lodge #404 F. & A.M. (he is a 32° Mason, belonging to both the Shrine and the Scottish Rite); Past President of the Ohio State Horticulture Society; and Past President of his local School Board, on which he has served for the past 12 years. He is also a member of the International Apple Institute, and his local Zoning Board.

Besides the positions he now holds in N.C.C., he is serving as Chairman of the Board for the Ohio State Fruit Growers Marketing Association, and is a Director of the Highlands Golf Club. He also serves his Church as Trustee, Deacon and Sunday School Superintendent.

Arnold's interests are many, and varied. He and Dorothea are both collectors of glass, as well as cast iron toys and banks, Indian artifacts and coins. They enjoy traveling, and Arnold is an avid golfer.

They have a lovely collection of Cambridge glass and at present, Arnold is most interested in collecting the #1321, 28 oz., footed, Decanter with the matching #7966, 2 oz. Sherry glasses. He has these sets in several different colors and would like to have them in all of the Cambridge colors and decorations.

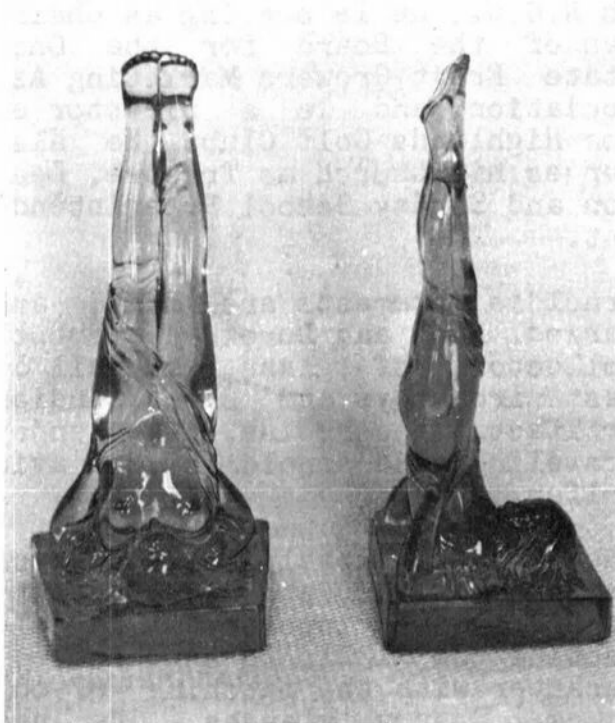
It has been a pleasure introducing you to this fine gentleman and we feel sure that it will be an even greater pleasure having him introduce us to our new N.C.C. Home one day in the not too distant future!

(EDITOR'S NOTE: Until such time as we have a new member appointed to the Board of Directors, this will conclude this series of articles. This is the 19th interview, and the 15th article of a series that began in November, 1975. It has been our hope to help our members feel better acquainted with those who serve them.)

Commemorative Dinner and

by Phyllis Smith

The November Quarterly Meeting and First Commemorative Dinner, was held on the evening of November 12, 1977. Eighty-five members and guests turned out for this most enjoyable and successful affair.



LADY LEG BOOKEND COMMEMORATIVES
(photo by Kit Rettig)

The new Lady Leg Bookend Commemorative is a truly lovely piece of glass (see photo). It is in a beautiful shade of blue. This is not a true Cambridge color, but it is very close to Bluebell (Tahoe, Ritz, or whatever name you have been calling this color). They are plainly marked on the front and back of the base with the following: front - CAMBRIDGE 1977, and back - N.C.C. (M) NO 1. Since these were never made by Cambridge in anything other than crystal and crystal frosted, there should be absolutely no problem on identification.

The Project Committee is to be congratulated for doing such a terrific job of putting everything together in such a short period of time and in such an extremely fine fashion.

After a truly delicious Buffet dinner, we all settled down for a reasonably short business meeting. (The minutes of this meeting begin on page 2.) After the business portion of the meeting was concluded, President Smith turned the balance of the evening over to our Project Chairman Dave McFadden and Program and Entertainment Chairman Charles Upton.

Dave showed slides of the Lady Legs being made, from the gathering of the molten glass, through the molding process, and ending as they were removed from the annealing lehr and packed into their individual boxes. This is a very fascinating procedure and the pictures were most interesting.



Being greeted at the door by Joy McFadden and Sue Rettig (backs to camera), were (right to left) Myrl and Dick Hill, Cambridge, Ohio, Mark Smith, Springfield, Ohio, and Marge and Roger Seaton, Cambridge, Ohio.

Quarterly Meeting Report

The balance of the evening was spent viewing approximately 105 colored slides of Cambridge glass stemware. Charles Upton and his committee had prepared a most educational program that was narrated by Lynn Welker. Besides the slides, they also had a table full of 100 different stems made by the Cambridge Glass Company. It is impossible to describe this excellent program so that those of you who could not be present can receive benefit from it. The best that can be done is to let you be aware of the fact that if at all possible, this program will be repeated during the 1978 Convention.



STEMS, STEMS AND MORE STEMS!

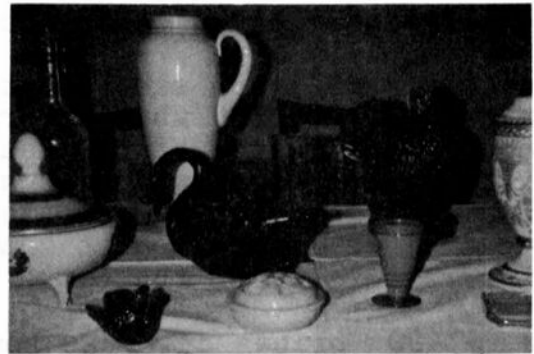
The picture above is poor in quality, but it will give you some small idea of the quantity of stems that were shown.



Our "Show & Tell" portion of the program, also led by Lynn Welker, included some extremely rare and lovely items. The photos at the bottom of this page show some of the more unusual finds. The small swan was in a Tangerine color and is the only one known to exist. The larger swan was dark emerald green, signed, has the older style feather detail and is also the only one known to exist. The turkey is in Bluebell, and the tall handled Tally-Ho cocktail shaker (without its top) was in the lovely Windsor Blue color. This is the first piece that anyone had seen (other than candlesticks) in Windsor Blue that was not in the Seashell Line.

The Whiskey bottle to the left of the cocktail shaker was in crystal Crackle glass. The little Stratford or Mt. Vernon two handled salt was in pink and had the plain rather than sawtooth top. The little sherbet had a pink top and a light blue foot, the small juice glass was in Pomona green and the flower frog was Azurite. The Blue Willow etching was on an Ivory candy box and the covered Urn was crown tuscan with gold etching. The Nude stem was in crown tuscan with an amethyst top.

As anyone who was there will tell you, it was a terrific evening, extremely well planned and very much appreciated and enjoyed by all present. If you missed this one, now is the time to resolve not to miss the next one!!



Rose Point



by
Lynn Welker

Our discussion this month will involve a closer look at the major lines the Cambridge Glass Company used for their Rose Point etching. There were three and they included the #3400, #3500 and #3900 Lines.

Having covered Rose Point stemware last month, we will examine table pieces such as plates, cups, saucers, creamers and sugars, in this article.

We have no way of proving which Line was first introduced with the Rose Point etching. Both the #3400 and the #3500 Lines were in production when Rose Point was first introduced in early 1935. However we do know that the #3900 Line did not come into use for Rose Point etching until the late 1940's.

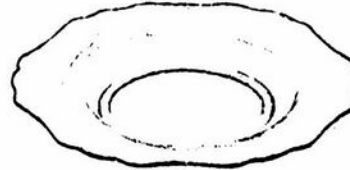
The #3400 cup and saucer are the most available of those made in Rose Point. The cup features a four cornered effect which begins from the bottom of the cup, raising to four points almost at the top of the cup. The edge of the cup consists of a series of four scallops separated by three small curves which coincide with the corner points molded on the cup.

The saucer has the same effect in six corner points which form a star in the bottom of the saucer. Six scallops separated each by three smaller curves decorate the edge of the saucer just as the four scallops do on the cup.

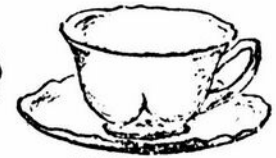
The #3400 plates drop the corner

points or star effect typical of the Line, but retain the six scallops separated by three small curves on the edge. Plates available in this Line with Rose Point etching were the #60 6" bread and butter, #176 7½" salad, #62 8½" salad (luncheon), #63 9½" dinner and the #64 10½" service. The 7½" and 8½" plates are easiest to find, the 6½" and 9½" plates are quite hard to find and the 10½" service plate is very rare.

3400 Dinnerware



3400(1)-7½" Tea Plate



3400(2)-Cup and Saucer



3400(3)-Sugar



3400(4)-Creamer

The creamer and sugar show the corner effect of the #3400 Line as well as the fancy filigree handle which is so distinctive to the #3400 serving pieces.

The #3500 Line in Rose Point is the hardest to find in plates, cups and saucers. The cup has a pedestal foot with ribs at the bottom of the bowl. The top edge is scalloped with bumps separated by straight lines embossed around both the top and bottom edges. These bumps are always found on the Gadroon Line which gives its name to the #3500 Line.

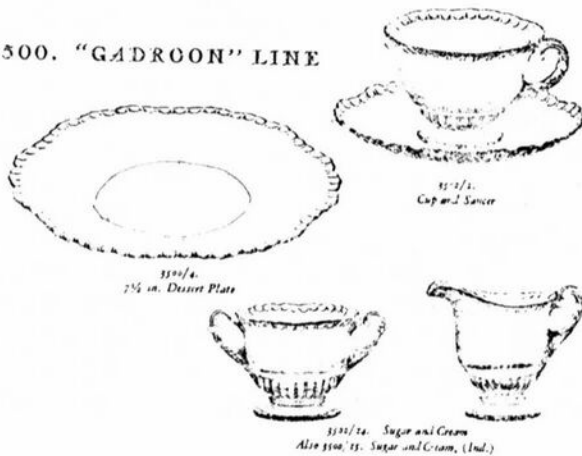
The saucers and plates have the same six scallop effect as does the #3400 Line, but again as on the cups, the edge has the embossed Gadroon border. The plates known in Rose Point in the #3500 Line are the #3 6" bread and butter, #167 7½" salad and #5 8½" salad (luncheon). The 8½" plate is seen occasionally, whereas the 6" and 7½" plates are seldom seen. No dinner plate in this Line in Rose Point has been reported, but

it is possible. Let us hear from you if you have one.

The creamer and sugar possess all the characteristics of the #3500 Line, including the pedestal foot, scalloped border with Gadroon edge and figured handles which end in leaves.

The last Line to be introduced with Rose Point etching was #3900. However, this Line is not seen as often as the #3400 in Rose Point.

3500. "GADROON" LINE



The #3900 Line cup has four large scallops separated by three points. The body of the cup has ten optic lines molded into it. The saucer has ten scallops separated by ten points on the edge which lead into ten optic lines on the top.

The 6 1/2" bread and butter plate and the 8" salad (luncheon) have a series of twelve scallops, twelve points and twelve optic lines. The 10 1/2" dinner plate has fourteen scallops, fourteen points and fourteen optic lines. As you can see, this line varies much more than the #3400 and #3500 Lines.

The creamer and sugar in the #3900 Line show the simplistic lines and optic molding common to the Line. However, the plain handles on the sugar and creamer are unusual to this Line, whose serving pieces usually have the fancy filigree handle shown on the #3900 Line cup.

THE 3900 LINE



If you are collecting Rose Point, do not be concerned about maintaining only one Line of shapes in your collection. Sets in Rose Point collected when it was being made often contain all three of the major blank lines. We have even seen cups in the #3400 Line that were originally sold with the #3500 Line saucers and vice versa.

You may want to stick to one line such as all #3400 cups, saucers and plates, but the serving pieces are just as lovely mixed as they were when they were originally sold that way.

The #3500 Line stemware was originally matched to the #3500 Line tableware. However, the #3500 Line stemware was still being made in Rose Point long after the #3500 Line plates, cups and saucers were discontinued.

Happy Rose Point Hunting!

On the Sick List

GOOD NEWS!!! Amanda Springborn is able to be up and about some. She isn't 100% yet, but she is well on her way. She isn't up to writing notes just now, so has asked us to send everyone most sincere THANKS from both she and Albert, for all your cards, notes and Prayers!

Keep up the good work Amanda, and best wishes for the New Year!

PRICES here & there

by N.C.C. Members
and Phyllis Smith

Before this year comes to an end, I would like to take a few seconds of your time to say THANKS to all of you who have taken the time and effort to write and share your "buys" with us. As I have said many times - without your help, this column just could not be!

From the Western part of the country we have received the following prices: a #3400/119 amethyst 12 oz. Cordial decanter with 4 #1341 1 oz. cordials for \$5 for the set; a pair of crystal two-lite candlesticks in Everglades for \$15; a #3400/96 3-piece oil and vinegar set in crystal for \$5 and an individual Martha Washington sugar in crystal for \$2.50.

From the Southwest comes the news that 10 oz. and 12 oz. #3121 stems were purchased for \$12 each and an 8" plate for \$8. All three pieces had Rose Point etching. A crystal individual creamer and sugar in the Corinth pattern \$5; an amber #732 etched cheese bottom for \$2; and a #3500/161 plate with Lynbrook cutting for \$7.50.

Our Cambridge Carnival Glass collector has been kind enough to send us the following information.

"Here are a few prices of Cambridge Carnival glass pieces from the Rose Presznick Auction, Oct. 9, near Cleveland.

Cambridge Cologne bottle, #2660, marigold, \$240. I have seen several of these in green Carnival and occasionally one in clear pressed glass but this is the only one I know of in marigold.

Inverted Strawberry, large compote purple, \$275. Buzz Saw cruet, lg. size (4 oz.), green \$350. Buzz

Saw cruet, small (2 oz.) green, no stopper, \$90. Inverted Thistle, creamer, purple \$130.

Several other pieces at this Auction were called Cambridge, but I didn't recognize them or know on what basis they were so attributed so I didn't include them."

The following pieces were purchased by one of our new reporters, in the midwest: pair of dark green Calla Lily candlesticks for \$6.50; and two - Two-Kid Flower Holders, one crystal \$25 and one Ivory \$26.

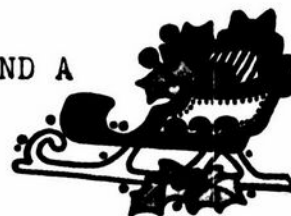
From one of our reporters here in Ohio comes news of the following buys made at an Auction: a seashell nude stem comport (small) in crystal \$20; royal blue Tally-Ho cordial \$22.50; nude stem goblet with carmen bowl \$45; pair of nude stem candlesticks in crown tuscan \$120 and three Bridge Hounds, one crown tuscan \$25, one Ritz blue (chipped) \$25 and one Smoke \$58.

Another Ohio reporter tells us they purchased two Bridge Hounds, one crown tuscan \$18 and one amber for \$16. It was also reported to us that amber and amethyst seem to be the most common colors to be found in these dogs.

From northeastern Ohio comes this report: three-section Gadroon relish, etched Rose Point \$7.50; an Ivory mayonnaise was left setting for \$35; a vase to fit in Cambridge Arms holder etched Chantilly \$1; moonlight blue Caprice coaster \$3; and left setting an ebon Cambridge Square ashtray for \$25.

Out of room for now - will be back with you again next year! Until then, here's hoping that Santa is good to you and brings you lots of Cambridge Glass!

MERRY CHRISTMAS AND A
HAPPY NEW YEAR!



QUESTIONS & ANSWERS

by Bill Smith

? Recently in the Auction reports it was mentioned that a Wildflower, amber, vase was Rare. Can you tell me is any gold encrusted amber, Wildflower unusual, or was it that particular blank? We have a beautiful console set in this pattern.

Jane Rogers, Missouri

ANSWER Webster defines the word RARE as "not frequently found", which certainly applies in this instance. The frequency of etchings found on colored glass is considerably less than etchings found on crystal. Of those etched colored pieces, even a smaller number are found gold encrusted.

? I have been referred to you for information, by the Imperial Glass Corp. I have acquired a toothpick holder in pink slag, Inverted Strawberry pattern. It is signed inside "Near Cut".

Would appreciate any information you could give me as to approximate age and value. Any help you could give me would be sincerely appreciated.

Mrs. Bill Haeft, Wisconsin

ANSWER This slag toothpick was produced some time during the last five to ten years by the Guernsey Glass Co., Cambridge, O. The original wholesale price was \$1 each. To our knowledge the Cambridge Glass Company never made a toothpick as a part of their Inverted Strawberry, Near-Cut Line.

(EDITOR'S NOTE: It is hoped that in the very near future we can begin a series of articles dealing with these confusing items being produced in Inverted Strawberry, Thistle, etc.)

The following questions have been sent to us by

Joy Servos, Texas

? Is it possible to get a better view of the Maryland cutting? I just can't tell enough from the picture in Welker's I - pg. 54.

ANSWER This pattern is shown in the McLean Catalog Reprint on pages 125-127. Unfortunately this catalog is no longer available. However, the new NCC 1949-54 Catalog Reprint will include a better view of this pattern. It should be available soon after the first of the year.

? I have a center handled tray that looks like the Plainware #168 (Welker's I, pg. 101) in a different color of blue. I know the moonlight blue, cobalt blue, and ritz blue, but this is more of a medium color. Could you tell me what it is?

ANSWER If your piece is a medium opaque blue, it is called Azurite. If it is a transparent blue, it is possible that it is any one of several colors. I am sorry, but I would have to have a better description in order to give a more accurate answer.

? Are the Cambridge Glass Auctions for members only. I did not see any ads for it in the Depression Daze or the Rainbow Review. I did not see any ads for it like the ones for the Show and Convention.

ANSWER No, they are definitely not limited to members only. They are open to the general public.



we get letters

In my heart of hearts, I just KNOW there are at least six or maybe even eight of the Moonlight Blue Caprice dinner plates just hoping to be taken out of old musty, long ago, packed away boxes; or, off of shelves bulging with unused, unloved, maybe, even unwanted glassware. What will it take to spread the word that this beautiful blue Caprice is sought for a specific occasion in a specific, loving, caring home?!? Any and all help in securing these plates for 89 year old Olive Frick and her devoted family will surely further true Christmas happiness for all who respond! Com'on! What's say all Cambridge-ites unit to spread some real Christmas Cheer! Let's join forces and get those six to eight dinner plates for Olive. I BET IT CAN BE DONE!!

Nancy Johnson, Oklahoma

I thought I'd let you know of some Georgia prices seen recently, many of which have contributed to our growing collection. 1) Frosted 3" swan (C), red beak, black feet (chip on wing) \$28, looks great in our show case. 2) Decorated crown tuscan covered candy dish \$30, sold to us. 3) Pair of crown tuscan Nude candleholders \$250, left in booth. 4) Crystal 8" swan, chipped wing and foot, fat neck and head \$3.50, debated too long, gone. 5) Pair of Gadroon crown tuscan candleholders \$100, left in booth. 6) Pair of crown tuscan oval seashells decorated (one quite worn) \$65, left. 7) Peach-blo glass, gold etched hunt scene (mint condition) \$4.50, sold to us of course. 8) 2½ oz. ruby Georgian tumbler (C) \$9, it joined our son Scott's collection.

Too numerous to count are Imperial swans called "Cambridge" by the dealers, various nudes in various styles "called Cambridge", and

anything with roses marked Rose Point. Now before everyone makes a mad dash for the "promised" land of Georgia, these prices aren't found every time you shop. Many dealers have book price or higher many label everything "Cambridge" that isn't, and sometimes you can strike gold and get a real sleeper.

Which brings to mind my husband Bill. Why, you ask, didn't he write? Well at a flea market last Sunday he saw a 9" Royal Blue Rams Head bowl with a \$60 price tag on it, but the dealer said he'd take \$45. Bill grabbed it, whispered hoarsely "buy that blue bowl", and clutched it to his chest. Four days later his eyes are blood-shot from staring at it, his strength is going fast as he can't put it down to eat, the fingers are bloody stumps from rubbing it, and he croaks incessantly "buy that blue bowl"!

Now, I need to know, did they make a cover for that "blue bowl", so I can put his ashes in?

Meg Turner, Georgia

In the September 11, 1977 Antique Trader, you showed a Monkey Lamp sold at the Cambridge Glass Auction. I am wondering if anyone else has discovered they have a lamp.

I have one I bought at an Auction three or four years ago in London Mills, Illinois. It was from an old Hotel. I would appreciate knowing when it was made. I feel very lucky for being able to buy it for less than \$20.

Phyllis Brown, Illinois

(EDITOR'S NOTE: We do not have an exact date as to when this Monkey Lamp was first produced, but it is assumed that it was approximately the same time as the Owl lamp, which was in early 1925.)

Club News

continued from page 2

MEMBERSHIP: Chairman Jo Barstow reported we now have 391 \$10 members, 145 \$3 members and 5 Honorary members for a total of 541.

PUBLICITY: Chairman Jack Rettig stated he would welcome any new advertising ideas. Sue Rettig announced an additional nine \$3 members were received during registration.

MUSEUM: Chairman Arnold Lynd advised that he has been checking on property and NCC should be having a new address soon. The Secretary reported since August 5 we have sold 37 copies of the 1930-34 Catalog Reprint and 33 copies of the other books. Also, Ed Ruby has donated a 4½ oz. oyster cocktail with the Sweetheart stem and Lena Barnes has donated a light emerald green, narrow optic, pulled stem goblet with original label to the Museum.

PROJECT: Chairman Dave McFadden reported a total of 260 Bookends were made, 5 were destroyed, so he took delivery on 255. Approximately 60 are left at this time and will be offered for sale at a price of \$32.50 each. A total of 1,174 Second Year Commemorative plates were destroyed with approximately 60 left to be sold. Slides were shown of the plates being destroyed and the Bookends being made at the Mosser Glass Company, Cambridge, Ohio.

Mr. McFadden then presented one Bookend each to Tom Mosser, Kit Rettig and Charles Upton for their services to NCC, Inc.

During the break-in and test period of the Bookend mold, Champaign colored glass was used. Approximately twenty-five Bookends were run in this color. Of this number Mr. Mosser retained one pair, donated one pair to the NCC Museum,

and all others were destroyed.

Mr. McFadden thanked his committee consisting of Jack and Sue Rettig, Frank and Vicki Wollenhaupt and Joy McFadden, for helping make the Bookend Project a success. He then introduced Charles Upton, Program Chairman. Mr. Upton thanked his committee consisting of Joy and Dave McFadden, Frank and Vicki Wollenhaupt, Doris Isaacs and Lynn Welker for their help in preparing the program.

A very informative slide program on "Stems" was presented by Lynn Welker. There was also a display of all the stems, plus Show and Tell items.

A motion was made by Frank Wollenhaupt to adjourn at 9:45 PM.

Janice Hughes, Secretary

STUDY Club News

CAMBRIDGE SQUARES

The Cambridge Squares Study Group met on October 30, in the home of Charles and Marybelle Moorehead. There were twelve members and two guests present.

Two new stems purchased by the group for the Museum, were examined and admired. They were a #3011 Nude stem with Heatherbloom bowl, and a #3700 Line blank in crystal.

Bill and Phyllis Smith were our guests, and Bill presented a most informative program on Cambridge baskets. Using copies from old catalogs, he identified patterns and gave approximate dates of issue.

There were approximately 40 baskets on display. They included:

continued on page 12

CAMBRIDGE SQUARES

continued from page 11

two sizes of Community pattern in ebony with enameled roses; several different colors in Georgian; one with Rose Point etching; one in Rubina, a #2800/231 made from the Community toothpick; several in various Near-Cut patterns and a most unusual #3000 design which would be hard to recognize without study. There were four of the large #4030 baskets, and several in opaque colors.

Several rare and unusual items were on our "Show and Tell" table this month. There was a set of 8 of the #9403 12 oz. tumblers as shown on page 31-20 of the NCC 1930-34 Catalog Reprint. Also a dark emerald green 8" signed swan, a satin finish blue Weatherford bowl with silver decoration, a pr. of Mt. Vernon milk glass candleholders, and a #3400 ftd. flip bowl with Rose Point etching.

Our next meeting will be held in the home of Dave and Judy Hardesty on November 18th. Topic for discussion will be the Seashell Line.

Submitted by Doris Isaacs

HOKEY-POKEYS

The Hokey-Pokey Study Club held their meeting in the home of Bill and Phyllis Smith, Springfield, O. on Friday evening, October 21st. There were six members present.

It was decided that we would direct our efforts to the purchase of a variety of Cambridge glass items to be donated to the Museum. The criteria being pieces that can be set in a space no larger than four inches square.

"Bring and Brag" consisted of a Pinch decanter in Bluebell, and a small Bunny Box in pink.

Next meeting will be held in the

home of Dave and Sue Rankin, Englewood, Ohio on November 18th.

Submitted by Phyllis Smith

MEMBERSHIP REPORT

by Jo Barstow

Our Membership Drive is progressing, but not nearly as well as I would like to see it!

From August 1st to October 31st, we added 66 new members to our membership rolls. This would be just wonderful if it weren't for the fact that we have also dropped 16 delinquent members! If anyone has any suggestions as to how we can improve these numbers, please let us hear from you.

The following members have been doing their part by signing up new members during the months of Aug., Sept., and Oct. They are: in the lead is Doris Isaacs who has signed up 6 new members. Right behind her are Bill & Phyllis Smith, and Finder's Keeper's Antiques who have signed up 5 each. Bob Cain, Arnold Lynd, Charles Upton and Jack Rettig have each signed up 2 new members; and George Hoffman, Steve Horner, Janice Hughes, Nancy Johnson and Mrs. William E. Nelson have all signed up 1 new member each.

Before anyone writes to say that they didn't see my name on this list, let me apologize here and now and say that I am working to correct this situation. My name WILL appear in the next up-date.

PLEASE, won't you do your part and let us add your name to this list? Be sure you sign your name to the application so we can give you credit, and THANKS for your help!

MEMBERSHIP RENEWAL NOTICE

If the date on your address label is - - 12 - 77
This is your LAST ISSUE of the
CRYSTAL BALL. Please renew NOW!

HARRISON'S ANTIQUES

26 Johnston's Lane
 Mercersburg, PA. 17236

PHONE: (717) 328-2451 after 6:00 PM

POSTAGE & INSURANCE EXTRA

ALL MINT CONDITION

SATISFACTION GUARANTEED

1. CROWN TUSCAN Console Set, #1240 12" Bowl & Pr #1307 Candelabra, Gold Encrusted Diane Etch, CROWN TUSCAN ACID STAMP SIGNATURE (all 3 pcs signed)-----\$225.00
 2. 9½" Dolphin Candlesticks, Emerald Green -----(Pr)--- 100.00
 3. RUBINA 10" Vase, Basket Weave ----- 110.00
 4. EBONY 10" Vase, decorated w/Gold Roses ----- 50.00
 5. AZURITE 3-PC Mayonaise Set (bowl, underplate, & ladle) ----- 50.00
 6. EVERGLADE 12" Bowl, Moonlight Blue, Tulips (bowl turned up, flared)----- 50.00
 7. EVERGLADE 12" Bowl, Crystal, Tulips -----(edge turned down)----- 30.00
 8. EVERGLADE 12" Bowl, Ftd Oval, Crystal----- 20.00
 9. #1138 SEA-GULL Flower Holder ----- 22.00
 10. CAPRICE, Alpine, Moonlight Blue, 12" Bowl, flared w/2-lite candlesticks--- 60.00
 11. CAPRICE, 8" Oval Bowl, Moonlight Blue ----- 20.00
 12. CAPRICE, Cup & Saucer, Moonlight Blue -----(3 Sets)-(Ea)- 15.00
 13. IVORY 9" Candlestick (B4-2-4)----- 25.00
 14. CROWN TUSCAN 5" 2-lite Dolphin Candlestick ----- 40.00
 15. 10" Crystal Swan (Mkd) ----- 50.00
 16. 4" Crystal Swan (Mkd) -----(2 Ea)--- 15.00
 17. 3" Pink Swan (Mkd) -----(3 Ea)--- 22.00
 18. Swan Punch Mug, 5 Oz, Crystal ----- 18.00
- FOLLOWING ALL ROSEPOINT, CRYSTAL
19. 12 Oz Ftd Tumblers, #3500 Stem -----(8 Ea)--- 18.00
 20. 7 Oz Tall Sherbet, #3500 Stem -----(4 Ea)--- 16.00
 21. 10 Oz Ftd Tumblers, #3500 Stem -----(2 Ea)--- 17.00
 22. 6 Oz Tall Sherbet, #3121 Stem -----(6 Ea)--- 12.50
 23. #3500- Dresser Tray, Oval, 12½" ----- 35.00
 24. #3400-647 2-lite candlesticks -----(Pr)--- 47.50
 25. #3400-67 12" 5-Compt Celery & Relish -----(2 Ea)--- 38.00
 26. #3500/55 6" 2-Hdl Square Basket -----(3 Ea)--- 22.50
 27. #3400/35 11" 2-Hdl Plate ----- 22.50
 28. 12" 2-Hdl Plate ----- 22.50
 29. 3400/1181 6" Flate ----- 12.50
 30. #3500-14 Cream & Sugar -----(1 Set)--- 38.00

SHOP HERE FOR CHRISTMAS GIFTS!

BOOKS FOR SALE

National Cambridge Collectors, Inc. is proud to announce that you can now order all of the available reference books on Cambridge glass directly from the Club.

Ohio residents add 4½% sales tax -- and send with your order to:

BOOKS
National Cambridge Collectors, Inc.
P. O. Box #416
Cambridge, Ohio 43725

1930-1934 CAMBRIDGE GLASS CO.
CATALOG REPRINT
by National Cambridge Collectors
(250 page reprint of
original catalog)
Hardbound with Price Guide - \$14.95

THE CAMBRIDGE GLASS BOOK
by Harold and Judy Bennett
(96 pages with 59 color plates)
----- \$ 9.95

1975 PRICE GUIDE TO
THE CAMBRIDGE GLASS BOOK
by Charles and Mary Alice Upton
(Prices for each item in
Bennett Book) - - - \$ 1.75

CAMBRIDGE GLASS COMPANY
by Mary, Lyle and Lynn Welker
(120 pages of reprints from
eight old catalogs) - - \$ 6.95

CAMBRIDGE GLASS CO. BOOK II
by Mary, Lyle and Lynn Welker
(119 pages of reprints from
old catalogs) - - - - \$ 6.95

CAMBRIDGE, OHIO GLASS IN COLOR II
by Mary, Lyle and Lynn Welker
(15 color plates with descriptions
and notes) - - - - - \$ 5.95

1903 CAMBRIDGE GLASS COMPANY
CATALOG REPRINT
by Harold and Judy Bennett
(106 page reprint of
original catalog) - - - \$ 7.50

DOROTHY KRAUSS

55 Finner Avenue

Asheville, North Carolina 28804

- 1 - #3111 stem in Heatherbloom
(WII-52)
(a) Low ftd. tumbler or iced
tea, set of 4 ----- \$ 70
(b) 10 oz. goblet. 3 @ \$22 ea.
set of 4 ----- \$ 85
(c) 7 oz. tall champaign or
sherbet, set of 4 ----- \$ 65
(d) Low ftd. sherbet. 1 @ \$17
set of 4 ----- \$ 60
- 2 - #3130 stem, gold krystal
w/Apple Blossom etching.
(a) Goblet (2) each ----- \$ 17
(b) Low ftd. water or soda
(3) each ----- \$ 15
- 3 - #3121 stem, Rosepoint etching
(WII-65) (3) each ----- \$ 22
- 4 - #3400/647 candlestick, Rose-
point etching (WI-38) pair --- \$ 55
- 5 - #3011 Nude candlestick
w/bobeche & prisms, frosted
(WI-45) pair ----- \$195
- 6 - #3011 Nude Farber candlestick
w/carmen cup - pair ----- \$ 95
- 7 - Doric candlestick, heliotrope.
Chip on one. Buy one - get
one free - pair ----- \$ 35
- 8 - #2 Everglades 5" candlestick,
crystal w/satin finish (WI-71)
pair ----- \$ 30
- 9 - #3400/647 candlestick, crystal
6" (WI-38) pair ----- \$ 17
- 10 - #1545, 3-lite candelabra w/
bobeche & prisms (WI-11) 1 --- \$ 45
- 11 - #3900/72, 2-lite candlestick
w/Chantilly etching (McL-6) 1- \$ 25
- 12 - #3400/627, 4" candlestick
(WI-38) 1 ----- \$ 6
- 13 - #70, 7" Caprice candlestick
w/prisms (WI-6) pair ----- \$ 22
- 14 - #3400/646 candlestick, gold
krystal w/Apple Blossom
etching (WI-38) 1 ----- \$ 12

POSTAGE AND INSURANCE EXTRA -----

----- FIVE (5) DAY RETURN PRIVILEGE!

DEALERS



DIRECTORY

| | | |
|---|--|--|
| <p>ANTIQUÉ ALLEY 24815 Broadway Bedford, Ohio 44146 216-232-7739 ---- Marie Spagnola CAMBRIDGE GLASS ROYAL DOULTON</p> | <p>BENICIA ANTIQUE SHOP 305 First Street Benicia, California 94510 OPEN 11 AM - 5 PM Closed Monday</p> | <p>BUSY BEE ANTIQUES 1044 Dublin Road Columbus, Ohio 43215 Robert Cain 614-486-8320 CAMBRIDGE ---- BROWSER'S WELCOME</p> |
| <p>CHURCH STREET ANTIQUES 6 Church Street Boston, Massachusetts 02116 George or Frank --- 617-426-1048 CAMBRIDGE, HEISEY, GENERAL LINE</p> | <p>Z. E. LOPES - 707-745-0978 VISIT HISTORIC BENICIA and its 28 shops Off Interstate #80 ----- ----- North of San Francisco</p> | <p>D & D ANTIQUES 184 East Kossuth Street (GERMAN VILLAGE) Columbus, Ohio 43206 DICK SLIFKO ----- 614-443-6020</p> |
| <p>THE DARROW COLLECTION Highway 1A and Jungle Hut Road Flagler Beach, Florida 32036 Phone 904-445-3805 Mail Address: Rt. #1, Box 167 St. Augustine, Florida 32084</p> | <p>D'MARIE'S ANTIQUES Rt. #1, c/o Eastern Antique Mart Thornburg, Virginia 22565 703-582-5755 ----- Jim Rankin OPEN DAILY - EXCEPT MONDAY</p> | <p>FINDER'S KEEPER'S ANTIQUES P.O. Box 303 P.O. Box 16023 Dayton, O. Columbus, O. 45401 43216 513-254-2937 614-965-1906 SPECIALIZING IN CAMBRIDGE GLASS!</p> |
| <p>MARY & WILBUR HENDERSON 303 Guilford Avenue Woodsfield, Ohio 43793 Shows Only -- 614-472-1133 SPECIALIZING IN CAMBRIDGE GLASS!</p> | <p>HERITAGE ANTIQUES Rt. #5, Cambridge, Ohio - 43725 614-439-3241 Take N.8th St.Rd.(County Rd.#33) TURN LEFT AT RAILROAD TRACK</p> | <p>HOBBY HOUSE ANTIQUES Rt. #1, Cambridge, Ohio - 43725 614-432-6971 - Frank & Lena Take Rt.#209 W.From Cambridge To RT. #658 - NORTH 1 1/2 MILES</p> |
| <p>HOFF - HAVEN ANTIQUES 21 Half Moon Lane Tarrytown, New York 10591 Shows-Mail-No Lists-914-631-2140 CAMBRIDGE, ROSE IN SNOW FOSTORIA</p> | <p>GEORGE HOFFMAN ANTIQUES 129 South 4th Street Newark, Ohio 43055 --- 614-345-8550 ---</p> | <p>MARGARET LANE ANTIQUES 2 E. Main Street New Concord, Ohio 43762 Lynn Welker ----- 614-826-4418 CAMBRIDGE GLASS MATCHING SERVICE</p> |
| <p>OUR GLASS ANTIQUES 20th CENTURY COLLECTIBLES featuring CAMBRIDGE GLASS Paul & Ginny Henderson - Box 134 Iselin, NJ 08830 -- 201-283-3181</p> | <p>OLD TOLL GATE ANTIQUES Route #5, Box 7X Milan, Illinois 61264 SPECIALIZING IN HAVILAND CHINA MATCHING SERVICE</p> | <p>PRESIDENTIAL COIN & ANTIQUE CO 6222 Little River Turnpike Alexandria, Virginia - 22312 Gail B. Levine ---- 703-354-5454 WANT LISTS SOLICITED-OPEN 6 DAYS</p> |
| <p>S & J ANTIQUES 5616 Hensel Woods Road Gahanna, Ohio 43230 Sue & Jack Rettig - 614-855-1711 CAMBRIDGE GLASS OUR SPECIALITY</p> | <p>Use Schleigers book numbers or send saucer for pattern match. SASE APPRECIATED Marie Esker ----- 309-787-2392 GENERAL LINE OF ANTIQUES</p> | <p>PUMPHOUSE ANTIQUES 111 E. Main St., Box 433 West Branch, Iowa 52358 Closed Monday - Sept. thru May 319-643-2879 - or - 319-337-5096 OUR SPECIALTY GLASS EARLY & LATE</p> |
| <p>A. SPRINGBORN P. O. Box E. G. #962 Melbourne, Florida - 32935 Shop #24, Webster, Florida OPEN EVERY MONDAY 305-254-7439</p> | <p>THE GLASS CUPBOARD 39 Shire Oaks Drive Pittsford, New York 14534 Marcia Ellis 716-586-7596 CAMBRIDGE ONLY --- SASE FOR LIST</p> | <p>M & M ANTIQUES & COLLECTIBLES 310 N. Main -- Box 417 Canton, Kansas 67428 The Martin's ----- 316-625-4705 SPECIALIZING IN CAMBRIDGE GLASS!</p> |
| <p>WOLFE'S GLASS EMPORIUM 330 Woodlawn Avenue Cambridge, Ohio 43725 John Wolfe ----- 614-432-2590 WED. & FRI. 1-5PM or APPOINTMENT</p> | <p>THIS 'N' THAT PLACE 101 South Street Chagrin Falls, Ohio -- 44022 Lue Koerper ----- 216-247-4938 OPEN THURS.-SAT.---10 AM - 5 PM</p> | <p>YOU CAN ADVERTISE YOUR ANTIQUÉ SHOP HERE! 1 inch - \$6 for six months</p> |

NOTICE

Due to the upcoming Holidays, our deadline for receiving advertising and copy must be changed from the 15th to the 10th during the months of DECEMBER and JANUARY. Your cooperation will be appreciated!

THANKS!

It has been called to our attention by several of the advertisers in our Dealers Directory, that they have been very pleased with the response they have received from YOU - our members!

They have requested that we extend to all of you their most sincere THANKS for your support, and All Best Wishes for a MERRY CHRISTMAS and A HAPPY NEW YEAR!

Local Man Gives Lecture At College

BRADFORD, MASS. — John C. Wolfe II of Cambridge lectured students and guests of Bradford College Oct. 27 on "Cambridge Glass: History and Art Value."

He was assisted in his lecture by Ms. Joellen James, also of Cambridge.

Wolfe is a founding member of the National Cambridge Collectors, Inc. and has a large personal collection of Cambridge Glass. He also sells the glass in his antique shop in Cambridge, Wolfe's glass Glass Emporium.

The lecture was held in conjunction with a showing of the college's collection of rare Sandwich Glass during Bradford's 175th anniversary year.

Bradford College is located 30 miles north of Boston and was formerly Bradford Junior College.

Wolfe lectured at the college at the invitation of John Trayte Goodall, formerly of Cambridge, and presently assistant to the president for college resources at Bradford.

— Classified —

WANTED: 89 YEARS YOUNG Senior Citizen needs 8 Caprice, moonlight blue dinner plates to complete her Christmas Dinner glassware. Reasonable prices will be paid. Call or write: Nancy A. Johnson, 1647 East 44, Tulsa, Oklahoma 74105, 918-742-5424. Prompt response is essential as the plates are destined for San Francisco!

FOR SALE: CAMBRIDGE: Lion book-end \$100; Swan, 10", pink, signed, with feather detail \$150; Swan 8", mandarin gold \$125; Sea Gull figure flower holder \$37.50; Blue Jay figure flower holder \$75; Draped Lady figure flower holder \$60; #3400 Creamer and Sugar, carmen \$35; Cut Wild Rose, punch cups \$10 each; #3400/90 Rosepoint relish \$25; 3-part Relish, etched Chantilly w/Sterling Silver base \$22; 3-piece Mayonnaise Set w/Elaine etching \$32. Satisfaction Guaranteed!! Postage and Insurance extra!! SWISS HILLS COLLECTIBLES, Mary & Wilbur Henderson, 303 Guilford Ave., Woodsfield, Ohio 43793, 614-472-1133.

NATIONAL CAMBRIDGE COLLECTORS, INC.
P. O. Box #416
Cambridge, Ohio - 43725

FIRST CLASS MAIL

Reprinted from The Daily Jeffersonian
Cambridge, Ohio

