

Cambridge



Crystal Ball

ISSUE NO. 54

OCTOBER 1977

Published monthly by the National Cambridge Collectors, Inc.
To encourage and to report the discovery of the elegant and boundless product
of the Cambridge Glass Company, Cambridge, Ohio



The above photo is a print taken from the booklet "A Souvenir" published by the Cambridge Glass Company, circa 1924. This booklet has been loaned to us courtesy of William C. Orme, Chemist for Cambridge Glass Company, and grandson of Arthur J. Bennett. Wouldn't it be grand if we could have a glass display such as this in our very own Museum? All the more reason to work toward making this our ---

MEMBERSHIP RENEWAL NOTICE

If the date on your address label is -- 10 - 77
This is your LAST ISSUE of the
CRYSTAL BALL. Please renew NOW!

"Year of the Museum"

Bice

CAMBRIDGE CRYSTAL BALL

Club News Quarterly Meeting

Official publication of National Cambridge Collectors, Inc., a non-profit corporation with tax exempt status. Published once a month for the benefit of its members. Membership is available for individual members at \$10 per year and additional members (12 years of age and residing in the same household) at \$3 ea. All members have voting rights, but only one CRYSTAL BALL will be mailed per household.

Be sure to draw a red ring around the 12th on your November calendar. This is the date for our Quarterly meeting and it is a VERY SPECIAL day for Cambridge Collectors.

Back issues of the CRYSTAL BALL are available to members only, at a cost of 60¢ ea. or 12 issues for \$7.

We do not have full particulars as this issue is going to press, but there will be an "insert" included before it is mailed to you.

1977-78 Officers & Committee Chairpersons

PRESIDENT ----- William C. Smith
VICE-PRESIDENT ----- David B. Rankin
SECRETARY ----- Janice Y. Hughes
TREASURER ----- Doris J. Isaacs
SERGEANT-AT-ARMS ----- David B. Rankin
BUDGET & FINANCE ----- William C. Smith
BY-LAWS ----- David B. Rankin
CONVENTION -----
MEMBERSHIP ----- Josephine A. Barstow
MUSEUM ----- Arnold Lynd
PROGRAM & ENTERTAINMENT - Charles A. Upton
PROJECT ----- David G. McFadden
PUBLICITY ----- John F. Rettig
STUDY GROUP ADVISORY ---- Janice Y. Hughes

We do know that this will be a dinner meeting and that you will not want to miss it. Your Project and Program & Entertainment committees, with the sanction of your Board of Directors, have come up with a most exciting new project. Be sure to read your "insert" and follow their suggestions carefully.

1978 ANTIQUE SHOW ----- Gerald R. Landman
1978 CAMBRIDGE AUCTION -----

Besides the "new project", your Program committee will present a most educational program on Cambridge Stems.

CRYSTAL BALL Editor ----- Phyllis D. Smith

Be sure you make your reservations EARLY!!

CLASSIFIED ADVERTISING RATES

5¢ per word \$1.00 minimum

We cannot mix type size in classified advertisements. Abbreviations and initials will count as words. Payment in full must accompany all ads.

DISPLAY ADVERTISING RATES

	Members	Non-Members
1/8 page -----	\$ 4.00 - - -	\$ 6.00
1/4 page -----	7.00 - - -	10.00
1/2 page -----	12.00 - - -	18.00
3/4 page -----	17.00 - - -	25.00
Full page -----	22.00 - - -	33.00

DEALERS DIRECTORY

1" ad ----- \$6.00 for 6 months

On the Sick List

We were saddened by the recently received news that one of our well known members, Mrs. Albert P. (Amanda) Springborn, suffered a brain hemorrhage on August 10th. She was operated on twice and is now recovering and taking therapy. It will be several months before she will be active again.

Anyone wishing to drop her a get well note may send it in care of NCC, P.O.Box 416, Cambridge, Ohio 43725, and it will be forwarded on to her.

Our best wishes for a speedy and complete recovery are being sent to you Amanda.

We are happy to report that after five months, your President Bill Smith, is off the disabled list and has returned to work full time.

As with any heart patient he must exercise caution, but the prognosis looks very good at this time.

Cambridge CRYSTAL BALL assumes no responsibility for items advertised and will not be responsible for error in price, description or other information.

Advertising copy must be in our hands by the 15th of each month to assure publication in our next issue. Advertisements containing reproductions will not knowingly be accepted unless clearly stated.

PLEASE ADDRESS ALL CORRESPONDENCE TO

Cambridge CRYSTAL BALL,
National Cambridge Collectors, Inc.
P. O. Box #416
Cambridge, Ohio 43725

PLEASE NOTIFY US IMMEDIATELY OF ANY CHANGE IN YOUR ADDRESS!

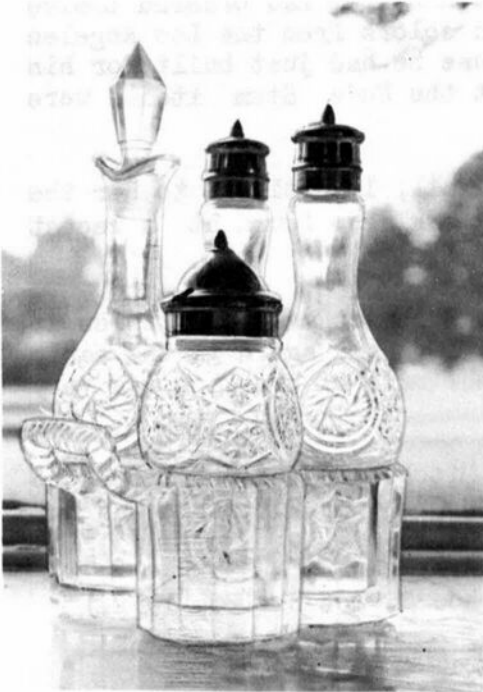
Please enclose a self-addressed, stamped envelope when requesting information!!

CAMBRIDGE ??

by Phyllis Smith

The Caster Set in the photo below looks exactly like the Cambridge Near-Cut Buzz Saw pattern - right? WRONG! It really doesn't look anything like Buzz Saw. But,

P
H
O
T
O
B
Y



K
I
T
R
E
T
I
G

DON'T BE FOOLED - IT IS NOT CAMBRIDGE!

when you first see it and pick up one of the bottles and note the word "NEARCUT" on the bottom, you do have a few doubts, for a few seconds at least.

After you look more closely, you realize it can not possibly be Cambridge Buzz Saw for several reasons. The most obvious one being that the "saw blades" are turning in the wrong direction.

The quality is not very good and it has the definite appearance of cheap, inferior, workmanship. It is most definitely a reproduction and one of which we should all be aware.

This set was brought to our attention at the Convention and our experts all agreed that it was definitely not Cambridge Glass! We



BUZZ SAW

don't know who is making it, and it really isn't important. The important thing is for us to be aware of such reproductions and not make the mistake of buying them.

The two Mt. Vernon individual creamers below look very much alike, but one is Cambridge and the other one was made in Taiwan. Can you tell the difference?

If you guessed the one on the right to be Cambridge, you are absolutely right and may go to the head of the class. Aside from the fact that it just has a better look about it, what other differences can you note?

First of all, study the handles, note the more distinct scroll work on the top of the one by Cambridge. Also notice the spout and the base. There are definite differences, but it takes study to recognize them.

If you could hold the two pieces of glass in your hands, there would be absolutely no question in your mind as to which one was the reproduction, BUT, if you see the reproduction on a table at a show or flea market, it may be a different story. The quality of the piece from Taiwan is very poor, as is its color. These are known to have been made in pink, green, amber and crystal.



WHICH ONE IS CAMBRIDGE?

It is sad that this type of reproduction is being made, but it happens to any item of value, and Cambridge glass as we all know is becoming more valuable every day.

About the only way you can protect yourself from these unscrupulous manufacturers of such merchandise is to study, study and then study some more. Until such time as we do become "expert", we need to remember

"If the quality isn't there -- BEWARE!!"

Martha Mitchell Interview

by Russell Vogelsong

Mary Martha Mitchell, former secretary to Mr. A. J. Bennett, President of the Cambridge Glass Company, has furnished us with two good bits of information this month.

She related how, many years ago, William Randolph Hearst had ordered twelve dozen each of all Nude Stem items in assorted colors from the Los Angeles show room for placement in a new Malibu Beach house he had just built for his long time mistress Marion Davies. They both felt the Nude Stem items were quite sheik.

While discussing Nude Stem items with Miss Mitchell, I mentioned to her the discovery of two table goblets in Pistachio crackle glass, found at a recent show.

Miss Mitchell went on to explain that crackle glass was made only twice at the Cambridge Glass Company. Once in the early 1940's and again in the early 1950's. Both times they had little success as the rate of breakage was very high.

Crackle glass was never a regular line and Miss Mitchell dated the Pistachio crackle glass Nude table goblets as made in the 1940's, as Pistachio was not made in later years.

(Reprinted from Vogelsong Newsletter Vol. II, No. 3, October 30, 1972.)

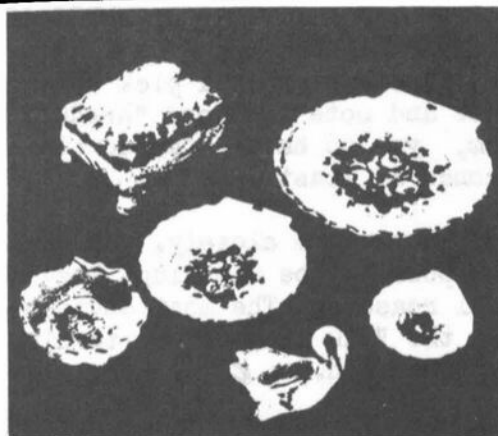
Additional Facts

An additional answer to the question on "Charleton" by Jack Roads, in last month's issue, pg. 8, is the photo at right.

This bit of advertising turned up in the most recent research efforts, of the Hokey-Pokeys Study Club. This advertisement was found in the May, 1952, issue of Crockery & Glass Journal.

This further proves that "Charleton" was the name used for the process of application and each pattern evidently had a number as well as a name. It will be interesting to see if other pattern names such as this "Blue Mist" will now come to light.

FLASH!! One of our members informs us of the fact that they know the location of an ivy ball with mandarin gold top and amber foot and stem. Needless to say, they would not give us "its" home address!



"Charleton"®

presents the ultimate in glass accessories . . .

Coral Shell

enhanced by a new, hand painted pattern . . .

Blue Mist

Abels, Wasserberg & Co., Inc.

24 EAST 26th STREET, NEW YORK 10, N. Y.
Chicago: Space 1330 Los Angeles: Grand Rapids: 15th Floor
Merchandise Mart March - Fairchild 503 Beak Shops 27 W. Seventh St.

CROCKERY & GLASS JOURNAL for May, 1952

QUESTIONS & ANSWERS

by Bill Smith

? Did Cambridge make a condiment tray (middle dish separate, with five sections) to sit on candleholder? I bought one in Kentucky and it's very nice glass, but must sit on something. I thought it might be part of the "Cambridge Arms".

Joyce Dawson, Oregon

ANSWER Yes, Cambridge did make such a tray. It is #3500/67, 12", 7 piece Peg Relish set. You may find a picture of it on page 20 of Welker's Reprint I.

The following questions of general interest were sent to us by Mrs. E. J. Price, Texas.

? What colors are known to have been made by Cambridge in the standing covered Turkey?

ANSWER Crystal, crystal frosted, dark emerald green, royal blue, amber, mandarin gold, light emerald green, dianthus pink, bluebell (tahoe?) and carmen.

? Did they (Cambridge) make a very small covered turkey salt? I recently purchased three, one in vaseline and two in crystal. The lady said they were Cambridge. They have the waffle base just like the large waffle based turkey and highly detailed.

ANSWER No, Cambridge did not make the salt you describe. The marker is unknown at this time, but it is thought possible they were made by L. E. Smith.

? Do you consider a Cambridge turkey to be scarce?

ANSWER Yes!! Probably VERY RARE would be more correct.

(For detailed information on how to tell a Cambridge turkey from all the rest, refer to the December, 1976, Issue No. 44 of the CRYSTAL BALL. On page 6, the article by Dave Rankin gives full details.)

The following questions were sent to us by Don and Kathy Eikhoff, Michigan.


? Were any of the different sizes of Cambridge swans, particularly the 9" size, reproduced in camphor glass? We saw one identical to the one shown in the Bennett book (plate 42, row 1, #3). It was not marked, but had the coral beak and black emphasis on the webbed feet. The frosted glass had more of a yellowish tone than the one in the Bennett book.

ANSWER At this time, we do not know of any repros with the coral and black emphasis.

? Did the Cambridge Glass Company ever combine the Caprice pattern with any etching they chose? A dealer showed us a sugar that had the Caprice pattern on the bottom half leading into the etching on the top half.

ANSWER Etching on Caprice - yes. Example: Rosepoint on foot of #1338, 3-lite candlesticks. Have no idea what the sugar was, but feel sure it was not Caprice. Have never seen Caprice on bottom and plain with etching on top.

? What style or pattern would a 10 inch fruit bowl with fourteen panels be? Would it be considered plainware? Friends of ours gave us one in Ritz Blue. It has the larger, older mark. We've also seen it in amethyst, selling for \$42.50.

ANSWER Pattern name or number is not known at this time. The large  marking and colors in which this bowl has been found, would indicate that it was from the 1926 to 1928 production period.

An Open Letter To The Membership

Dear Fellow Members,

As a new member of your Board of Directors, and as your new Membership Chairman for the coming year, I am sending out a PLEA TO ALL MEMBERS, to make a vow for next year's Convention. That vow is, to dedicate yourself to do everything you can, to see to it that our membership grows as never before, in this 1977-78 year!

I have committed myself to the task of increasing our membership by at least 100% and in order to do this, I must have help from each and every one of you. This is not an impossible task! On the contrary, the way Cambridge glass is growing in popularity, it should be a relatively easy one, but WE MUST ALL PULL TOGETHER.

How can you help? What can you do to make this our greatest year yet? It is really quite simple! JUST SIGN UP AT LEAST ONE NEW MEMBER! It won't really be hard to do and I can tell you the very best place for a lot of you to start. Is your wife or husband a member now? If not, then your problem is solved - just send in their name, your membership number and a check for \$3. See how easy it can be? Now then for those of you who have already signed up your husband or wife, don't despair, there are plenty of others you can sign up! How about your mother, father, sister, brother, aunt, uncle, grandparents, next door neighbor, a very dear friend, your business partner, your friendly Antique dealer - the list is endless. You will find a membership application at the top of the last page of this CRYSTAL BALL. If you need another (and I certainly hope that you will), please drop me a note and I will see to it that you receive it immediately. Be sure to write your name on the application where it says "recommended by", so we will know who to thank.


At this very moment we are standing on the threshold of seeing our dream of a Cambridge Glass Museum, owned and operated by National Cambridge Collectors, Inc., become a reality. It is the hope of your Board of Directors that this year will surely become the "Year of the Museum", as our President Bill Smith has so aptly dubbed it. Won't you PLEASE join with us in doing everything we can to help?

What a thrill it will be at our 1978 Convention when Bill asks for everyone that has signed up at least one new member during the year, to please stand, and we can ALL stand and be counted! I know it can happen, and I am counting on each of you to help me see to it that it does happen!

I'm planning to hear from you and you can depend on hearing from me, as I keep you up to date and informed of our progress. We have an exciting year ahead of us. Please do your part for our Membership Drive, and start making your plans now to be with us for our Convention next June - hopefully in our new Museum.

It isn't just a Dream - it can become a reality with YOUR help!

Sincerely yours,


Jo Barstow
Membership Chairman

JAB/ps

Cambridge RAINBOW

by Lynn Welker

Just right for a rainy autumn day is this month's color, Mandarin Gold.

Mandarin gold is a medium yellow color, brighter than the earlier gold krystal, but, paler than the vibrant, vasoline colored topaz. Mandarin gold survived about nine years as a production color, but it was not manufactured in large quantities, as were other popular Cambridge colors such as amber, royal blue, dark emerald green and carmen.

Growing out of the color gold krystal, an announcement in the August, 1949, issue of China, Glass and Lamps, first introduced "Mandarin" as one of the "Cambridge Glass Company's new colors". This author assumes that there was a slight formula change as the mandarin gold is a bit deeper color than gold krystal.

Mandarin gold was produced in most of the popular lines of the 40's and 50's. These included: Tally-Ho, Cascade, Corinth, Gyro Optic, Mt. Vernon, Martha Washington, Seashell, Pristine, Georgian, Caprice, #3500 (Gadroon) and #3400. Only selected pieces from each line were produced in mandarin gold, not the entire line. As an example, Caprice was offered in plates, cups and saucers, sugar and creamer, bowls, candlesticks and other miscellaneous pieces.

Several of the major stem lines were offered in mandarin gold, often with a crystal stem and foot. Examples include: #3111, #3121, #3122, #3130, #3500 (these stems are usually seen w/Rosepoint etching), #1066 (Aurora, commonly called "golf ball" stem), #1401 (Jefferson), and the Stradivarius (Regency). The #1066 line can be found with the bowl, stem and foot all in mandarin gold.

Mandarin gold pieces with etchings and decorations are seldom found, whereas etchings and gold decorations are often found on its forerunner, gold krystal.

There are several nice figural items to be found in mandarin gold, but these are not easy to find and usually command very high prices.

The #3011 Nude stemware was made in mandarin gold, although few pieces are seen today. The exception being the 3 oz. cocktail and the 1 oz. brandy (later referred to as a cordial). The large seashell top nude comport was made entirely in mandarin gold, and is considered extremely scarce.

Swans were produced in the 3", 6½" and 8½" sizes. There is also the possibility that the 4½" and 10" swans were made, but none have surfaced to my knowledge. Swans made in mandarin gold are all of the latest style by Cambridge rather than the earlier styles with feather detail.

The Bridge Hound pencil or cigarette holder, the Blue Jay candelabra figure, the 8" Dolphin candlesticks with square base, the 8½" and 13½" Draped Lady figure flower holders, the Blue Jay figure flower holder and the covered Turkey box, are all to be found in mandarin gold. There are other possibilities of figural items to be found in this color, but these are the only ones we have seen or heard of to date. If you know of others, please write so we may share this information with others.

Put some sunshine in your life - - - -
- - - - - Collect Mandarin Gold ! !

"Mount Vernon" "Martha Washington"



TALLY = HO



3400

"GADROON"



518 Figure Flower Holder



we get letters

To All Members: We were able to attend the '77 Convention and think the Club and everything was just wonderful. People who live in the nearby area are fortunate, also do most of the work, and are to be commended. Hope our Club has a nice museum someday. Again, thanks for nice time while there. Everyone was so friendly we felt right at home.

Joyce Dawson, Oregon

We're parents again, this time it's triplets. One is called 1st Prize, one is called 2nd Prize and last is 3rd Prize. We're parents of three ribbons won at the Cuyahoga County Fair.

Steve placed nine pieces in the fair and won 1st place in the Cambridge category with his Flying Lady Nude bowl with enameled gardenias. He also took 2nd place with an amber Melon decanter including six 3 oz. matching tumblers. He took 3rd place in the fair's Ruby category by entering a carmen 6 oz. Tally-Ho punch cup. Needless to say, he's been beaming every since.

There was other Cambridge also entered in the fair and a three toed crown tuscan nut dish walked away with 3rd place in the nut dish category. Another piece was a miniature royal blue gadroon basket which was precious, but which did not take a prize.

We were impressed with the display and I don't mind telling you, I have an "ear-to-ear-grinning" proud husband.

Sue and Steve Horner, Ohio

Congratulations Sue & Steve!! We're proud for you also.

I am a little "pokey" at times, especially to express my delight in having won the door prize. The darling candy dish will

scontinued in next column

always be such a nice reminder to my sister and me of the most enjoyable time we had at the 1977 Cambridge Convention.

The congeniality which prevailed throughout our three day attendance added to our weekend of fun and we left happy (but exhausted) with our newly acquired treasures.

We are anticipating meeting new acquaintances and old friends again in 1978. Thanks again.

Elsie Felker, Ohio

July 18, 1977

Mrs. Janice Hughes
c/o National Cambridge Collectors Inc.
Box 416
Cambridge, Ohio 43725

Dear Mrs. Hughes:

I'm so grateful for your complimentary ticket to the Cambridge Collectors meeting on June the 25th and 26th. We left town the 26th, and Bing was there and it was a mad exciting day or two for all of us. I do thank you for your tickets though.

And I want to tell you, I liked Heisey glass very much, but I was absolutely enchanted by Cambridge glass. The round shape is what got me. I love fat little people and fat little teapots, and fat little cruets - and Cambridge has a way of making them just to perfection.

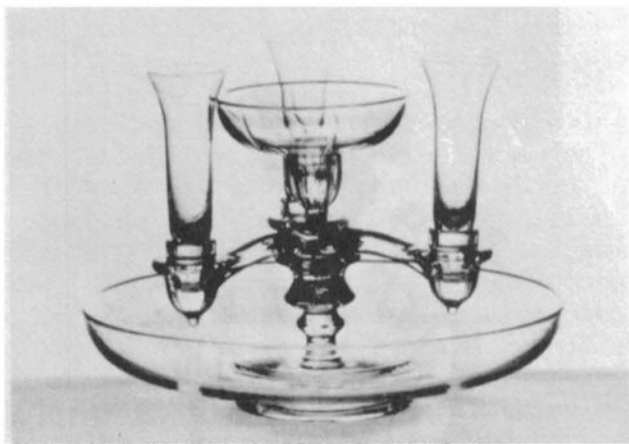
I hope your collection is large, and that you have a wonderful time with it.

Best wishes,

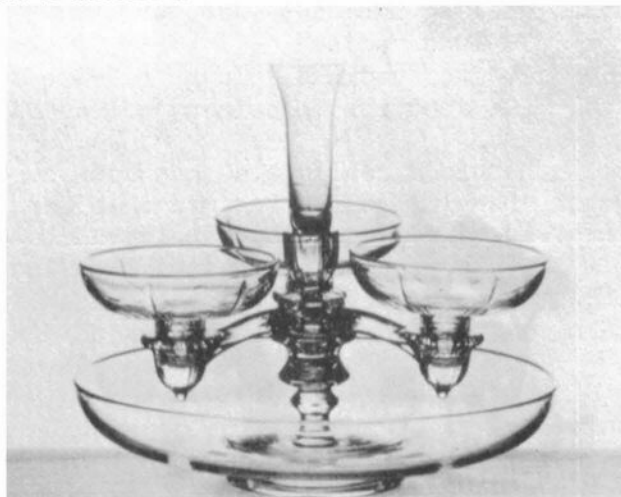
Kathryn Crosby



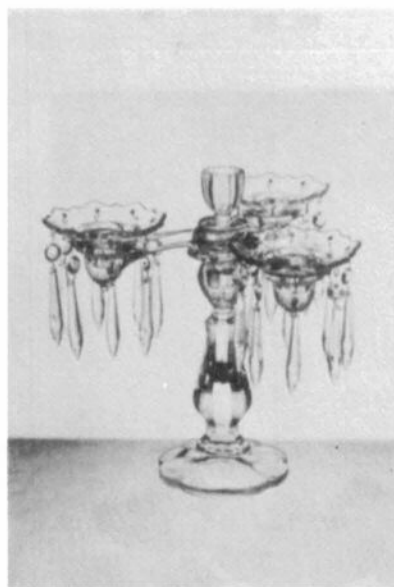
"CAMBRIDGE ARMS" Smart Table Appointments DESIGNS for DINING



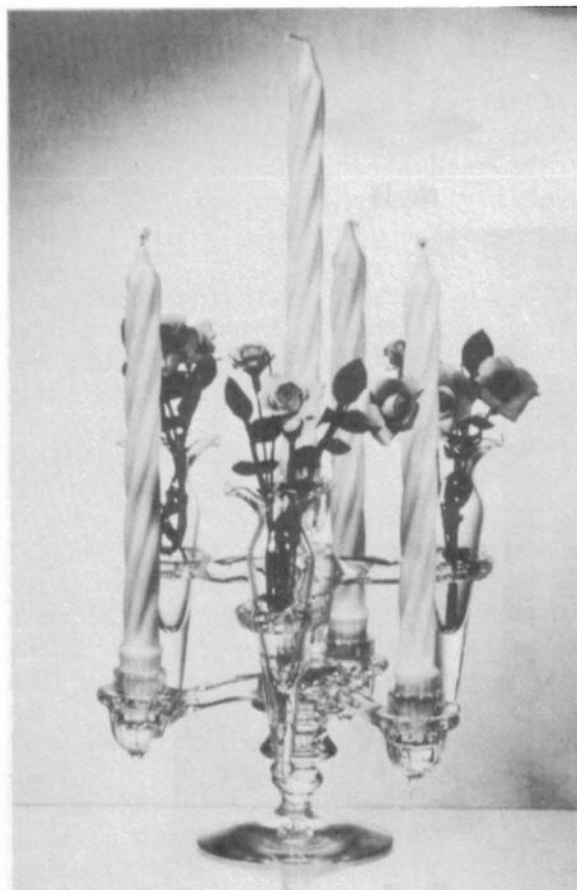
No. 31



No. 32



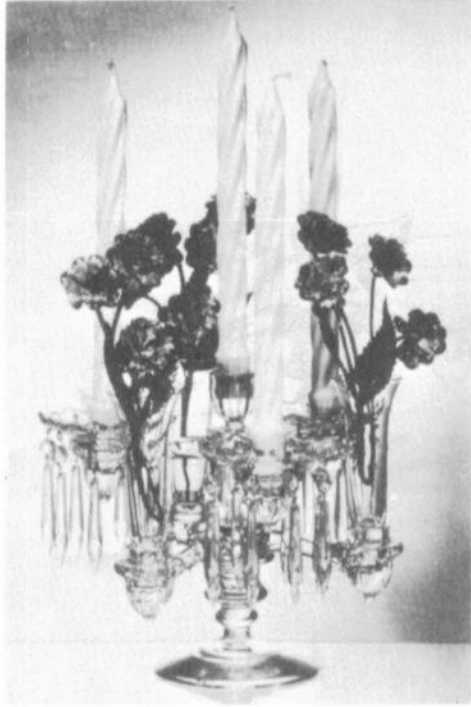
No. 653



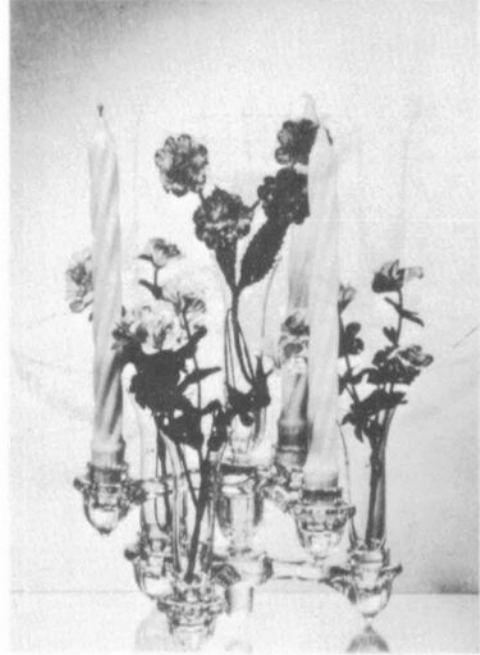
No. 5



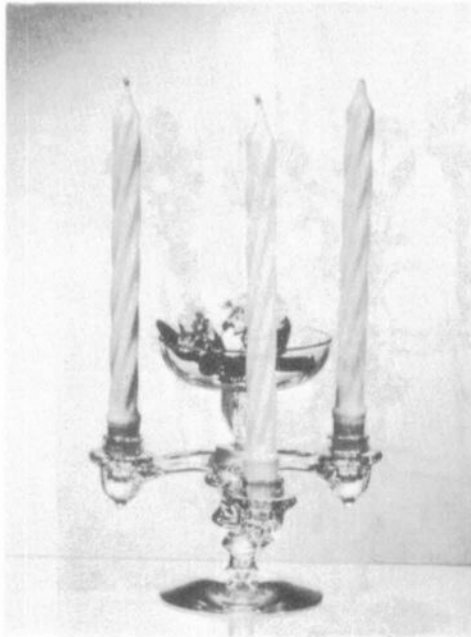
"CAMBRIDGE ARMS"
Smart Table Appointments
DESIGNS for DINING



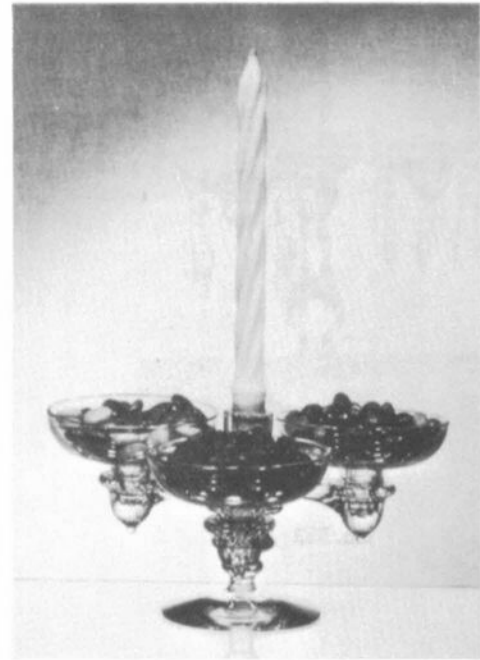
No. 16



No. 34



No. 12



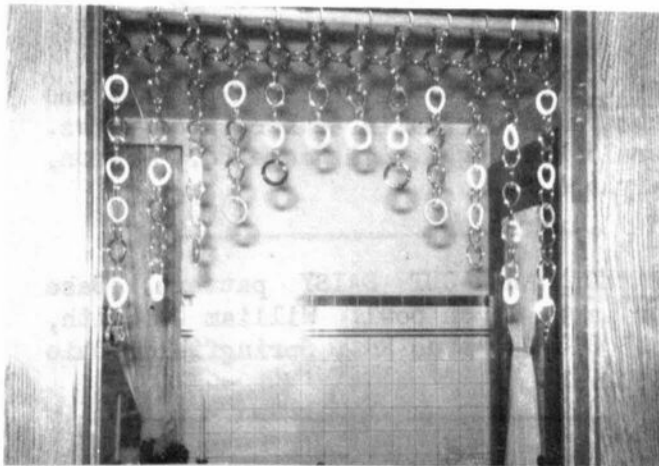
No. 33

PRICES here & there

by N.C.C. Members
and Phyllis Smith

During these past summer months, a lot of Cambridge glass has changed hands, and consequently a lot of prices have been established. It is the feeling of many that Cambridge prices are definitely on their way up, and it looks as if the sky will be the limit.

The more unusual and rare items are demanding and bringing high prices. A case in point is the unusual portiere shown in the photo below. It was purchased at an auction a couple of months ago for the sum of \$80. At the same auction, a double one sold for \$240. These portiere's have been hard to find until this summer, and a total of at least six single and three double ones have been brought out of hiding. Prices for all have ranged in the area of the prices mentioned above. It is almost a certainty that others will be found and that the prices will go up even more as soon as Cambridge collectors realize how lovely these look hanging in the doorway with the sunshine gleaming through them. They are truly beautiful!



CAMBRIDGE GLASS PORTIERE

The following prices have been received during the past few months, so along with the Auction prices you received last month this will give you a few more items of information.

At an auction in Ohio, one of our reporters sends us the news that a crystal triangle shaped Cambridge display sign sold for \$30, an amber bridge hound brought a

price of \$12, a moonlight blue Caprice candy dish went for \$15, and a crystal ice bucket in Caprice went home with someone for \$21.

Some Michigan prices are as follows: an 80 oz. ball jug in ebony w/crystal handle \$18, a 14 oz. Nautilus decanter in royal blue w/crystal handle and stopper \$8, a 5½" ftd. comport, Fernland pattern, marked NearCut \$3, a 11½" Feather bowl \$15, and a 12 oz. ftd. goblet, amber bowl with #1066 (Aurora) crystal stem and foot \$2.

Some northern Ohio prices included a large Thistle cream and sugar, signed NearCut \$65, Inverted Strawberry 12" plate with scalloped edges, signed NearCut \$20, a set of Farber cream and sugar in amethyst \$45, and Rosepoint goblets on #3121 stem sold for \$22 each.

A couple of prices from Pennsylvania show a Marjorie cruet, marked NearCut selling for \$9 and an unmarked Ribbon cruet bringing \$9 also. In New York a child's punch bowl in Wheat Sheaf unmarked NearCut sold for \$6.50

We seem to have received several prices on NearCut. Could this be an indication that interest in Cambridge NearCut is beginning to pick up. Hopefully this is the case.

One of our reporters sent us some "asking" prices from North Carolina. Rosepoint oval #3500, 13" bowl \$88.50, amber plates with unknown etching \$6.50 each, Inverted Strawberry open sugar \$45, and Rosepoint bread and butter plates were on "Sale" for \$10 each.

In Kentucky it seems that any stemware in Rosepoint starts at \$15 and up. A 4-ftd. crimped Rosepoint bowl was seen for \$37. A pair of ring stem etched Elaine candleholders sold for \$25.

This seems to be all we have for this issue. Hope to hear from more of you since autumn has arrived and you will have more time to write. Remember, without your support, this column cannot continue.

"The present is the period when the future pauses for a short while before becoming the past." Unknown

CLEVELAND AREAS FIRST
All Depression Era Glass
Show and Sale

Featuring Depression Glass

HEISEY - CAMBRIDGE - FOSTORIA - NEW MARTINSVILLE - DUNCAN MILLER

Sponsored by

WESTERN RESERVE DEPRESSION GLASS CLUB

NOV. 5, 1977 10 A.M.-6 P.M.

NOV. 6, 1977 11 A.M.-5 P.M.

at the
HOLIDAY INN—STRONGSVILLE, OHIO

I-71 and Rt.82 - Exit 10 off Turnpike

MEMBERS

Lynn Welker -- CAMBRIDGE

Louise Reem, Tom & Neila Eredshoft -- HEISEY
Addie & Everett Miller -- NEW MARTINSVILLE

DOOR PRIZES

Bring Items
You Want
Identified

ADMISSION \$1.00

For Information
Shirley Graff
4515 Grafton Rd.
Brunswick, Ohio
216-225-5005 44212

THIRD ANNUAL
Antique Show
&
Flea Market

sponsored by

REYNOLDSBURG HEISEY COLLECTOR'S CLUB

Sunday, October 30, 1977, 9 AM to 5 PM

at the

REYNOLDSBURG HIGH SCHOOL GYM
6699 E. Livingston Avenue
Reynoldsburg, Ohio

Dealers with Cambridge, Heisey, Duncan &
Miller, Art Glass, Primitives, Furniture
and other collectibles.

ADMISSION 50¢ --- REFRESHMENTS AVAILABLE

Classified

WANTED: ROSEPOINT, crystal - 2 cups and
saucers, 4 cocktails (aurora stem). Mrs.
Gerald Middaugh, 441 Range Rd., Towson,
Maryland 21204.

WANTED: NEAR-CUT DAISY pattern. Base
for large punch bowl. William C. Smith,
4003 Old Columbus Rd., Springfield, Ohio
45502.



"Pleasant words are like a honeycomb,
sweetness to the soul and health to
the body."
Prov. 16:24

THE DARROW COLLECTION

AIA and Jungle Hut Road, Flagler Beach, Florida 32036
(MAILING ADDRESS: Rt. 1, Box 167, St. Augustine, Florida 32084)

PHONE: 904-445-3805

1 - 9" Ster bowl, moonlight blue -----	\$70.00	21 - #1321, Decanter w/5 pulled stem sherry glasses, amethyst (WII-16) set -----	\$65.00
2 - #1388, 28 oz. Decanter, crystal w/royal blue handle and base (WII-16) -----	32.00	22 - Mt. Vernon, large cream and sugar #8, crystal (NCC-32-26) -----	16.00
3 - #3400/113, 35 oz. Decanter, royal blue (WII-16 and NCC-33-7) -----	45.00	23 - Mt. Vernon, individual salt #42, crystal (NCC-32-26) -----	4.50
4 - 5 Iced Tea in Farber holders, royal blue, dark green, crystal, amethyst and amber -----	35.00	24 - Pristine, 6 oz. tall sherbet (WII-48) -----	10.00
5 - 7 Sherbets in Farber holders, amber -----	40.00	25 - Bridge Set: crystal holder w/2 royal blue tumblers -----	28.00
6 - #1020 Cocktail Shaker, ebony w/Scottie D/987-S (NCC-31-27) -----	70.00	26 - #3500/47, two-hld. Candy dish w/gold Portia etching (WI-43) 2 ea. -----	6.00
7 - Round Dinnerware: 5 salads, 8 desserts, 4 cups and saucers, amber (NCC-34 & 35) -----	60.00	27 - #361, Ebony Salt and Pepper, w/crystal holder (McL-2D and WI-16) -----	16.00
8 - Georgian tumblers, amber (NCC-33-B-8) 8 ea. -----	8.00	28 - #70 Caprice candlesticks, moonlight blue (WI-6 and McL-2) pair -----	12.00
9 - 3", #1040 Swan, light emerald green (NCC-48) -----	28.00	29 - #1402/88, 11" Tally-Ho bowl, royal blue (NCC-33-3) -----	50.00
10 - 6½", #1042 Swan, crystal (NCC-48) -----	23.00	30 - Decagon, handled Sandwich, light emerald green -	11.00
11 - #18, Sea Shell bowl, crown tuscan (WI-40) -----	85.00	31 - Salt and Pepper in Farber Holders, amethyst -----	12.00
12 - 84 oz. Nautilus Jug, royal blue (NCC-34-1) -----	42.00	32 - #272, 10", ftd., Bud vase w/Rosepoint etching (WI-50) -----	35.00
13 - Base only for NearCut Marjorie #2631, punch bowl, 8½" across top rim (WII-107) -----	20.00	33 - Candlesticks, pink w/#732 etch. (NCC-31) pair -----	22.00
14 - #3400/4 Bowl, decorated, crown tuscan (NCC-34-10) -----	70.00	34 - #3600 Stem w/Chantilly etching: 5 - 7 oz. tall sherbets and 4 - 2½ oz. wines (1 of each is chipped) (WII-57) -----	60.00
15 - 3-lite Candlestick w/Diane gold etching (1) -----	22.00	35 - NearCut Feather #2651, pedestal cake stand (WII-105) -----	32.00
16 - #3500/64, Cadron divided relish w/Rosepoint etching (NCC-33-13 & WI-68) -----	32.50	36 - NearCut Feather #2651, comport -----	19.00
17 - #3900/19, ftd. Mayonnaise, no spoon, w/Rosepoint etching (CB-6'77-3) -----	25.00	37 - Old-Fashioned tumblers (6), amber, in Farber holders w/crystal muddlers (6) - on Farber tray (muddlers - Cambridge??) -----	45.00
18 - #3011, Nude Stem 3 oz. wine, crystal w/carmen top - rim never ground (NCC-34-2) 2 ea. -----	50.00	38 - #5900/166, 14" Sandwich w/Rosepoint etching (CB-6'77-3) -----	45.00
19 - Nautilus decanter, 28 oz., emerald green (NCC-34-1) -----	20.00		
20 - #W-125, Caprice, rose vases, milk glass, pair (WII-3) -----	18.00		

ALL ITEMS MINT UNLESS NOTED!! ----- POSTAGE AND INSURANCE EXTRA!! ----- PLEASE ENCLOSE SASE FOR REPLY OR CHECK RETURN!!

CHINA, GLASS & LAMPS August, 1933

The No. 3078 stemware line of the Cambridge Glass Co. at the right illustrates four sizes of half sham beverage tumblers. In capacity these are 15, 12, 5 and 2½ oz. The jug and decanter shown are supplementary pieces to a full stemware line. This line is in colors of crystal, forest green, royal blue, amber and amethyst. The tumblers illustrated may also be had in ruby.



SIDNEY PERRY

7848 HUNTINGTON FOREST DRIVE, HIXSON, TENN. - 37343

MAIL BIDS

Closing date on all bids: OCTOBER 31, 1977. Please include extra for Postage. All bidders will be notified. Please enclose a SASE for reply and check return.

YOUR SATISFACTION GUARANTEED OR RETURN FOR REFUND!

(The right to refuse unreasonable bids is hereby reserved.)

- 1 - #3011/40 Flying Lady bowl (WI-44) and 9" #3011 Nude Stem candlesticks (WI-45) in crystal w/original stickers.
- 2 - Tomestone bookends, peachblo, no etching (B-29-3-3e).
- 3 - #518, 8½" Draped Lady flower holder, crystal, have 3 (B-41-2-9).
- 4 - 11" Mandolin Lady flower holder, crystal (B-41-1-1).
- 5 - Same as #3, dianthus pink.
- 6 - Same as #3, moonlight blue.
- 7 - Same as #3, light emerald green, have 2.
- 8 - Same as #3, amber.
- 9 - #509, Two-Kid flower holder, light emerald green, satin finish (B-30-2-3).
- 10 - Same as #9, amber.
- 11 - Rose Lady flower holder, peachblo, old style tall base.
- 12 - #1114, 6", Bashful Charlotte flower holder, crystal (WI-35).
- 13 - #1115, 11" Bashful Charlotte flower holder, crystal (WI-35).
- 14 - #1123, Dresden Figure, crystal (B-46-2-3).
- 15 - 9 Champagne's w/gold Talisman Rose silk screen pattern.
- 16 - 6" Comport w/gold Talisman Rose silk screen pattern.
- 17 - #3011, 7" Nude Stem flared comport, crystal (B-44-4-6).
- 18 - #1299, 11" ftd. Vase, crystal, etched Wildflower (WI-50).
- 19 - 11" Vase, crystal, gold etching resembles Portia (?).
- 20 - #402, 12" Vase, pink w/Peacock etching (B-23-1-3).
- 21 - #3450, 28oz. Nautilus decanter, emerald green (B-38-2-3).
- 22 - 10" Cascade vase, mandarin gold (B-49-1-3).
- 23 - #21, 7½" Everglades "Daffodil" vase, heatherbloom (?) (WI-69).
- 24 - #300, Candy box and cover, pink w/green rose knob, 8½" high, signed (WI-30).
- 25 - #3400/4, 12", 4-toed bowl (WI-17), and #646, 5" candlesticks (WI-19), in mandarin gold.
- 26 - 8", Gyro Optic vase, green (WI-84 pattern only).
- 27 - #213, 2½" ftd. Caprice shell ash tray, crystal (WI-26).
- 28 - #6004, 6" ftd. Bud vase w/Wildflower etching and gold trim (WI-49).
- 29 - #1371, Bridge Hound cigarette holders: 1 in ebony and 1 in forest green (WI-28).
- 30 - #3500/25, 9" Ram's Head bowl, Gadron pattern, crystal (B-37-2-3).
- 31 - Inverted Strawberry, marked "NearOut", 9" bowl, emerald green, gold decoration.
- 32 - #207, 3½" x 3½", Caprice, cigarette box and cover, crystal (B-35-2-2 and WI-27).
- 33 - Luncheon Set, service for 8 - cups, saucers, dessert plates, all signed (L), mandarin gold (one saucer or plate is chipped). Pattern is #3400 Line.
- 34 - #3400/10, 11" Sandwich tray, center hdl., mandarin gold (WI-39).
- 35 - Buddha Lamp, crystal w/gold lamp parts.
- 36 - #3400/99, 6 oz. Oil and 3" hi. (?) Mustard bottom, both w/Rosepoint etching (WI-22 & 23).
- 37 - #124, 8½" Caprice, 3 section relish, pink (WI-76).
- 38 - Small Everglades 3 ftd., bowl, marked (L), pink frosted. Interesting piece!
- 39 - Cambridge Arms. Have 2 #1563 4 candle arms, 6 or 8 peg nappies and 1 peg vase, crystal (WI-2 & 3).
- 40 - 8" Cambridge Square bud vase, crystal (B-20-3-2).
- 41 - #274, 10" ftd. Vase, pink (B-15-3-3).
- 42 - #3500/15, ind. Gadron sugar and cream, mandarin gold.
- 43 - Candy dish, crystal frosted in Farber holder w/handle.
- 44 - Royal blue pieces in Farber holders: (1) water pitcher w/crystal handle; (2) creamer and sugar w/tongs; and (3) mayonnaise and relish w/spoon.
- 45 - Luncheon Set, Mt. Vernon, 14 piece service for 4 - cups, saucers, dessert plates, sugar and cream, crystal.
- 46 - Georgian Candy box w/lid & original sticker, peachblo.
- 47 - #130, 6" Caprice comport, moonlight blue (WI-75).
- 48 - #91, Caprice salt and pepper w/square bottom, crystal (WI-24).
- 49 - Tomato bowl and foot, has orangey-red opaque rim at top (B-25-2-3). Cambridge ??
- 50 - #1013, Decagon 12" bowl, marked (L), crystal w/ ? etching (WI-87).
- 51 - #326, bowl, crystal w/Diane etching, marked (L) (WI-65).
- 52 - 8" Ivory Vase (B-21-2-3). Note: 8" not 11" as shown. Cambridge ??
- 53 - 9½" Smoke Vase.

REFERENCES: Welker's Catalog Reprint I (WI-page no.); Bennett's The Cambridge Glass Book (B-plate-row-no.)

DEALERS



DIRECTORY

<p>ANTIQUÉ ALLEY 24815 Broadway Bedford, Ohio 44146 216-232-7739 ---- Marie Spagnola CAMBRIDGE GLASS ROYAL DOULTON</p>	<p>BENICIA ANTIQUE SHOP 305 First Street Benicia, California 94510 OPEN 11 AM - 5 PM Closed Monday</p>	<p>BUSY BEE ANTIQUES 1044 Dublin Road Columbus, Ohio 43215 Robert Cain 614-486-8320 CAMBRIDGE ---- BROWSER'S WELCOME</p>
<p>CHURCH STREET ANTIQUES 6 Church Street Boston, Massachusetts 02116 George or Frank --- 617-426-1048 CAMBRIDGE, HEISEY, GENERAL LINE</p>	<p>Z. E. LOPES - 707-745-0978 VISIT HISTORIC BENICIA and its 28 shops Off Interstate #80 ----- ----- North of San Francisco</p>	<p>D & D ANTIQUES 184 East Kossuth Street (GERMAN VILLAGE) Columbus, Ohio 43206 DICK SLIFKO ----- 614-443-6020</p>
<p>THE DARROW COLLECTION Highway 1A and Jungle Hut Road Flagler Beach, Florida 32036 Phone 904-445-3805 Mail Address: Rt. #1, Box 167 St. Augustine, Florida 32084</p>	<p>D'MARIE'S ANTIQUES Rt. #1, c/o Eastern Antique Mart Thornburg, Virginia 22565 703-582-5755 ----- Jim Franklin OPEN DAILY - EXCEPT MONDAY</p>	<p>FINDER'S KEEPER'S ANTIQUES P.O. Box 303 P.O. Box 16023 Dayton, O. Columbus, O. 45401 43216 513-254-2937 614-965-1906 SPECIALIZING IN CAMBRIDGE GLASS!</p>
<p>MARY & WILBUR HENDERSON 303 Guilford Avenue Woodsfield, Ohio 43793 Shows Only -- 614-472-1133 SPECIALIZING IN CAMBRIDGE GLASS!</p>	<p>HERITAGE ANTIQUES Rt. #5, Cambridge, Ohio - 43725 614-439-3241 Take N.8th St.Rd.(County Rd.#33) TURN LEFT AT RAILROAD TRACK</p>	<p>HOBBY HOUSE ANTIQUES Rt. #1, Cambridge, Ohio - 43725 614-432-6971 - Frank & Lena Take Rt.#209 W.From Cambridge To RT. #658 - NORTH 1 1/2 MILES</p>
<p>HOFF - HAVEN ANTIQUES 21 Half Moon Lane Tarrytown, New York 10591 Shows-Mail No Lists-914-631-2140 CAMBRIDGE, ROSE IN SNOW POSTORIA</p>	<p>GEORGE HOFFMAN ANTIQUES 129 South 4th Street Newark, Ohio 43055 --- 614-345-8550 ---</p>	<p>MARGARET LANE ANTIQUES 2 E. Main Street New Concord, Ohio 43762 Lynn Welker ----- 614-826-4418 CAMBRIDGE GLASS MATCHING SERVICE</p>
<p>OUR GLASS ANTIQUES 20th CENTURY COLLECTIBLES featuring CAMBRIDGE GLASS Paul & Ginny Henderson - Box 134 Iselin, NJ 08830 -- 201-283-3181</p>	<p>OLD TOLL GATE ANTIQUES Route #5, Box 7X Milan, Illinois 61264 SPECIALIZING IN HAVILAND CHINA MATCHING SERVICE</p>	<p>PRESIDENTIAL COIN & ANTIQUE CO 6222 Little River Turnpike Alexandria, Virginia - 22312 Gail B. Levine ---- 703-354-5454 WANT LISTS SOLICITED-OPEN 6 DAYS</p>
<p>S & J ANTIQUES 5616 Hensel Woods Road Gahanna, Ohio 43230 Sue & Jack Rettig - 614-855-1711 CAMBRIDGE GLASS OUR SPECIALITY</p>	<p>Use Schleigers book numbers or send saucer for pattern match. SASE APPRECIATED Marie Baker ----- 309-787-3292 GENERAL LINE OF ANTIQUES</p>	<p>PUMPHOUSE ANTIQUES 111 E. Main St., Box 433 West Branch, Iowa 52358 Closed Monday - Sept. thru May 319-643-2879 - or - 319-337-5096 OUR SPECIALTY GLASS EARLY & LATE</p>
<p>A. SPRINGBORN P. O. Box E. G. #962 Melbourne, Florida - 32935 Shop #24, Webster, Florida OPEN EVERY MONDAY 305-254-7439</p>	<p>THE GLASS CUPBOARD 39 Shire Oaks Drive Pittsford, New York 14534 Marcia Ellis 716-586-7596 CAMBRIDGE ONLY --- SASE FOR LIST</p>	<p>M & M ANTIQUES & COLLECTIBLES 310 N. Main -- Box 417 Canton, Kansas 67428 The Martin's ----- 316-628-4705 SPECIALIZING IN CAMBRIDGE GLASS!</p>
<p>WOLFE'S GLASS EMPORIUM 330 Woodlawn Avenue Cambridge, Ohio 43725 John Wolfe ----- 614-432-2590 WED. & FRI. 1-5PM or APPOINTMENT</p>	<p>THIS 'N' THAT PLACE 101 South Street Chagrin Falls, Ohio -- 44022 Lue Koerper ----- 216-247-4938 OPEN THURS.-SAT.---10 AM - 5 PM</p>	<p>YOU CAN ADVERTISE YOUR ANTIQUÉ SHOP HERE! 1 inch - \$6 for six months</p>

National Cambridge Collectors, Inc.

P. O. Box 416, CAMBRIDGE, OHIO 43725



A nonprofit organization dedicated to the preservation and study of Cambridge Glass

You Are Cordially Invited
To Become A Member Of The
NATIONAL CAMBRIDGE COLLECTORS, INC.

Benefits derived from membership include: receipt of our club publication, The Cambridge CRYSTAL BALL; informative Quarterly Meetings; Antique Shows; Auctions; and other special events.

The Cambridge CRYSTAL BALL is published the first of each month. This newsletter contains educational and interesting articles, questions and answers, information on reproductions and reissues, notices of all club functions, classified advertisements, dealers directory and many other features of interest to collectors of Cambridge glass.

Yearly dues are \$10.00 for Individual Members and \$3.00 for each Associate Member. All members have voting rights, but only one issue of the CRYSTAL BALL will be mailed per household.

Name (please print) _____ \$ 10.00

Mailing Address _____

City _____ State _____ Zip _____

Associate Members: (Must be at least 12 years of age and living in the same household.)

1. Name _____

2. Name _____

3. Name _____

Associate Members @ \$ 3.00 each \$ _____

Please make check payable to: National Cambridge Collectors, Inc.

TOTAL AMOUNT ENCLOSED: \$ _____

Recommended by _____

NATIONAL CAMBRIDGE COLLECTORS, INC.
P. O. Box #416
Cambridge, Ohio 43725

FIRST CLASS MAIL