

Cambridge



Crystal Ball

ISSUE NO. 53

SEPTEMBER 1977

Published monthly by the NATIONAL CAMBRIDGE COLLECTORS, Inc.
To encourage and to report the discovery of the elegant and boundless product
of the Cambridge Glass Company, Cambridge, Ohio

Thoughts from the President - - - -

For all practical purposes the summer has run it's course and it is now time to cast aside all of the thoughts of vacations and such and return to the old "salt mines".

With our auction now behind us, your Board and various committee chairpersons will be getting into harness to get plans rolling for our future endeavors.

All of the chairpersons have now been appointed with the exception of Convention, and most of these are busy getting their committees formed and efforts started. You will find a list of all of these people on page two in the publication masthead. Some of them possibly will be contacting you to help on their committees.

We have not as yet seen the final figures from the Auction, but all indications are toward another success. In general it was quite similar to last years auction in the number of people that attended, the number of buyers and the time involved. There is even some indications that the Club's profit will be substantially the same. This profit however comes from a smaller number of consignments that were generally of a higher quality than last year. The final figures will be passed on to you when they become available.

MEMBERSHIP RENEWAL NOTICE

If the date on your
Address Label is --

9-77

This is your last issue of the CRYSTAL
BALL! Don't miss a single issue - RE-
NEW YOUR MEMBERSHIP NOW!

FORM ENCLOSED FOR YOUR CONVENIENCE

Progress toward the new reprint catalog is gaining momentum. The initial lists have been put into the hands of pricing teams and many of the needed missing pages have been located. We cannot guess at a date for this material to be delivered to the printer as yet, but it will not be too far into the future. We have requested that the pricing teams have the information returned by the 15th of September. Some additional time will be required for the accumulation of the figures for the lately acquired pages.

Each time that we look at the material for this reprint, we are more convinced that this will be a highly worthwhile effort on the part of the Club, to all collectors of Cambridge glass.

Our new Project chairman has indicated the efforts of his committee will be toward a new realm of Projects for the Club. These are to be interesting and rewarding to you as members, as well as being money-makers for the Club.

The Museum chairman promises that his committee will be diligently seeking the ways and means of the establishment of our anxiously awaited Museum. This could easily be considered our most important priority, as such an establishment will provide us with a Club home. We would no longer be a Post Office Box Number, we would become an entity.

We will encourage maximum support for this committee in the hopes that they will make this become the "Year of the Museum".

Bill

CAMBRIDGE CRYSTAL BALL

Official publication of National Cambridge Collectors, Inc., a non-profit corporation with tax exempt status. Published once a month for the benefit of its members. Membership is available for individual members at \$10 per year and additional members (12 years of age and residing in the same household) at \$3 ea. All members have voting rights, but only one CRYSTAL BALL will be mailed per household.

Back issues of the CRYSTAL BALL are available to members only, at a cost of 60¢ ea. or 12 issues for \$7.

1977-78 Officers & Committee Chairpersons

PRESIDENT ----- William C. Smith
VICE-PRESIDENT ----- David B. Rankin
SECRETARY ----- Janice Y. Hughes
TREASURER ----- Doris J. Isaacs
SERGEANT-AT-ARMS ----- David B. Rankin
BUDGET & FINANCE ----- William C. Smith
BY-LAWS ----- David B. Rankin
CONVENTION -----
MEMBERSHIP ----- Josephine A. Barstow
MUSEUM ----- Arnold Lynd
PROGRAM & ENTERTAINMENT - Charles A. Upton
PROJECT ----- David G. McFadden
PUBLICITY ----- John F. Rettig
STUDY GROUP ADVISORY ---- Janice Y. Hughes

1978 ANTIQUE SHOW ----- Gerald R. Landman
1978 CAMBRIDGE AUCTION ----

CRYSTAL BALL Editor ----- Phyllis D. Smith

CLASSIFIED ADVERTISING RATES

5¢ per word \$1.00 minimum

We cannot mix type size in classified advertisements. Abbreviations and initials will count as words. Payment in full must accompany all ads.

DISPLAY ADVERTISING RATES

	Members	Non-Members
1/8 page -----	\$ 4.00 - - -	\$ 6.00
1/4 page -----	7.00 - - -	10.00
1/2 page -----	12.00 - - -	18.00
3/4 page -----	17.00 - - -	25.00
Full page -----	22.00 - - -	33.00

DEALERS DIRECTORY

1" ad ----- \$6.00 for 6 months

Cambridge CRYSTAL BALL assumes no responsibility for items advertised and will not be responsible for error in price, description or other information.

Advertising copy must be in our hands by the 15th of each month to assure publication in our next issue. Advertisements containing reproductions will not knowingly be accepted unless clearly stated.

PLEASE ADDRESS ALL CORRESPONDENCE TO

Cambridge CRYSTAL BALL
National Cambridge Collectors, Inc.
P. O. Box #416
Cambridge, Ohio 43725

PLEASE NOTIFY US IMMEDIATELY OF ANY CHANGE
IN YOUR ADDRESS!

Please enclose a self-addressed, stamped
envelope when requesting information!!

Club News

National Cambridge Collectors, Inc.
Quarterly Meeting
August 5, 1977
Howard Johnson's Motor Inn
Columbus, Ohio

The meeting was called to order at 8:05 PM by President Smith. In attendance were 12 Board members and 35 Club members from three states.

The minutes of the June 26th, Annual Meeting were read by Janice Hughes. A correction was made to delete the word "Quarterly" from the second line so it will read "Fourth Annual Meeting".

There was no Treasurer's report.

COMMITTEE REPORTS

BY-LAWS: No report.

CRYSTAL BALL: Editor Phyllis Smith reported two issues had been prepared and mailed since the Convention. She also requested additional writers.

MEMBERSHIP: Chairman Sue Rankin reported as of August 1, we have 367 \$10 members, 132 \$3 members, 2 Honorary members for a total of 501. Twenty-two members are delinquent.

PROJECT: Chairman Dave Rankin reported he would need volunteers for pricing teams to work on the new catalog reprint. Anyone interested should contact him after the meeting.

PUBLICITY: Chairman Jack Rettig reported articles regarding the Convention appeared in the Antique and Tri-State Traders. Other publications will carry it next month.

STUDY GROUP ADVISORY: No report.

MUSEUM: Chairman Larry Hughes reported 23 copies of the 1930-34 Catalog Reprint and 45 copies of other publications have been sold by the Museum committee since last report.

----- continued on page 11

Let's Get Acquainted

by Phyllis Smith



It is with pleasure that we introduce one of our newest Board members this month. Mrs. Josephine A. Barstow was elected to serve on your Board of Directors in June, and is already busy with her new job as Membership Chairman for the coming year.

Jo is not the type of gal to sit around and let someone else do all the work. She is always right there, willing and capable of tackling whatever needs to be done.

Born in Akron, Ohio, on April 30, 1929, Jo is the daughter of Everett and Beulah Clinton. She graduated from Kenmore High School in 1945 and was married to her husband Gerald in November of that same year.

Gerald is a self-employed carpenter who's business brought the Barstow family to Cambridge, Ohio, a little over two years ago. Since that time, Jo's interest in Cambridge glass has developed into what she terms as an "addiction".

She and Gerald are the proud parents of five grown children and two grandchildren. They have one son, Rick, 28, Dentist, married with a daughter. Their four daughters are: Vicki, 27, Nurse, married with a son; Lori, 21, single, student at Ohio State; and Christi, 20, and Joi, 19, who are both married.

next column please ---

Always a busy person, Jo has managed to keep herself involved in many activities and projects since the children are grown. Of course being wife and mother has always come first, but at various times she has also worked in Insurance sales, as a waitress, as a saleslady in an Antique Shop, and as a hospital volunteer.

Her latest endeavor has been to study for and to become a Real Estate Agent. Hopefully she will be able to help us in our search for a suitable home for N. C. C. in the form of a building for our Museum.

Jo became a member of N.C.C. in March 1976 and is also a member of the Cambridge Squares Study Club. She worked in the N.C.C. Booth at the 1976 Convention, and served as Registration Chairman for the 1977 Convention. She has worked on an index guide for the CRYSTAL BALL, and is now serving as our new Membership Chairman.

Besides her hobby of collecting Cambridge glass, she also likes to do craft projects and play golf and bowl. She has, in the past, been active in both bowling and golf leagues, holding various offices for each group.

She says that she had trouble deciding exactly what pieces she wanted to collect in Cambridge, so she started out with a center piece bowl, candlesticks, and a draped lady figure flower holder in peachblo. She has since graduated to collecting any and all figure flower holders, nude stem cocktails, and anything in carmen and royal blue. Her latest "thing" is smoker items. Seems as though she is absolutely correct when she says that she has become a "Cambridge Addict".

What we need is many more "addicts" just like Josephine! We'd have our Museum in no time at all!

Reminder !!

Our Treasurer, Doris Isaacs, has asked us to remind you that your Auction consignment fee is tax deductible. Perhaps you will want to keep this in mind and be sure to consign your glass to our Auction next year! ----- YOUR SUPPORT IS APPRECIATED!!

auction report

by Phyllis Smith



Auctioneers Craig Connelly and Larry Stickle take the final bid on the rare Primrose Soap Dish being held by Dave McFadden. (Photo by Kit Rettig)

Upon entering the Auction room on Friday evening, August 5th, to attend the N.C.C. Quarterly meeting, one had the very distinct feeling of walking into a lovely dream (in technicolor) and never wanting to wake up. The auction glass was so beautifully displayed that it defies description. You really had to be there to appreciate the outstanding array of lovely Cambridge glass.

Nothing but the highest praise will do for Auction Chairman Lynn Welker and his very able and talented committee consisting of Jack, Sue and Kit Rettig, Joy and Dave McFadden, and Vicki and Frank Wollenhaupt. They certainly deserve much thanks and appreciation for the tremendous job they accomplished in arranging this display for our benefit and enjoyment.

After the Quarterly meeting we all had the opportunity of examining the glass more closely, and to decide just what we wanted to bid on the following morning. (Please see page two of this issue for the Minutes of the Quarterly meeting.)

The Auction itself was held as scheduled on Saturday, August 6th. Auctioneer Craig Connelly and his apprentice Larry Stickle, did a commendable job of moving the 237 lots in approximately five hours. Well over a hundred spirited bidders kept things moving at a fairly rapid pace.

Probably the most surprising action involved the rare little soap dish in Primrose Community pattern, which brought \$110. It undoubtedly could have brought even more, as its new owner seemed to be very determined to have it, regardless of the cost!! It was a lovely piece and it has found a good home where it will be very well cared for, especially since it almost completes their set!



RARE Monkey Lamp brought \$550



Controlled Bubble Paperweight sold for \$60

Another outstanding piece that did not involve much in the way of bidding, was the very RARE Monkey Lamp. This unusual lamp was started at \$500, and immediately anyone not serious about buying it, was eliminated from the bidding. The next bid was \$550, and that is where it ended. Needless to say, the lovely lady that took it home with her was extremely happy. This was the only item in the auction that she really wanted, and fortunately for her, it was the one she bought!



Auction Chairman Lynn Welker



Rubina, Sunset, Royal Blue and Carmen!

Like all auctions, we had our surprising high's and low's. An extremely good buy was a 16 piece luncheon set in dark emerald green, Tally-Ho pattern, that sold for \$40. An equally surprising bid was \$42.50 for a 3½" light emerald green swan. There is no way to figure why prices go as they do at any auction -- it just seems to depend on what a person wants to buy at that particular moment and what they are willing to pay.

The prices that everything sold for are included with this issue of the CRYSTAL BALL. You can see for yourself just what each item brought. Do hope you saved your auction list that was mailed to you with your July issue.

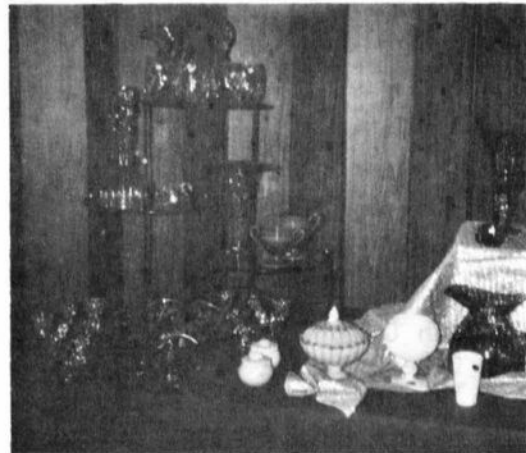
If you missed the Quarterly meeting and Auction this year, you missed an interesting meeting, wonderful fellowship (Cambridge collectors are the nicest people around), not to mention a really enjoyable time -- and most important of all, a lot of beautiful Cambridge glass!

This Auction was a tremendous effort on the part of many of our faithful members ---- without whom this event could not have happened. A very Special Thanks is extended to everyone who had a part in this annual Club project!

Now is the time to start making your plans to attend next year - we'll see you there!



President Bill Smith chats with the Jack Conner's family from Kentucky.



Pistachio, Light, Dark and Pomona Green, Crown Tuscan & Milk Glass!

CAMBRIDGE SQUARE *by Imperial*

photo's by Billy Shumpert

by Gwen Shumpert

A few years ago I walked into a Jewelry store in south Mississippi and saw sitting on a top shelf, covered with dust, a carmen "Cambridge Square" covered candy box. Needless to say, I almost had a light coronary!

The owner of the store said, "I've got some more things like this, if you are interested!". Was I EVER interested!!! Down from the shelf came two of the large ashtrays, and two pair of cupped candlesticks. They were all carmen "Cambridge Square", and some of ~~them~~ were complete with the black and gold foil label that is so distinctly "Cambridge".

My joy was unspeakable, that is, until I got my bifocals focused on that label. It did say "Genuine Handmade Cambridge",-- BUT it went further, it also said "by Imperial".

After the shock wore off, I decided that I was still fortunate. The items are beautiful and the color is magnificent! So, as they say, "until the real thing comes along I'll just be glad I found my Imperial Ruby "Cambridge Square".

Lucile Kennedy, Sales Manager for Lenox-Imperial Glass Company, Bellaire, Ohio, said that she thinks this line was made in 1969.



#165 - 7" Candy Box and Cover



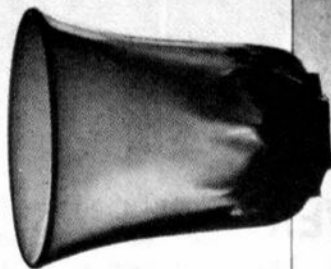
#150 - 6½" Ash Tray



#67 Cupped Candlestick

EDITOR'S NOTE: Cambridge Square was first introduced by the Cambridge Glass Co., (in crystal only) on May 14, 1952, by a circular letter to all dealers. Evidence that it was produced in Carmen at some later, unknown date, is shown by the "flyer" on the next page. (the original is in color) A 9½" vase in Carmen w/ crystal foot, is mentioned in a 1958 price list. In addition, Cambridge also produced Cambridge Square in their Ebony and Ebon colors. In addition to the three pieces mentioned in Gwen's article, Imperial also produced 11" and 6½" salad bowls, a 13½" plate, and a 10" oval dish in their Ruby color. They also made a candy box and cover in crystal.

Carmen



P-572



P-569



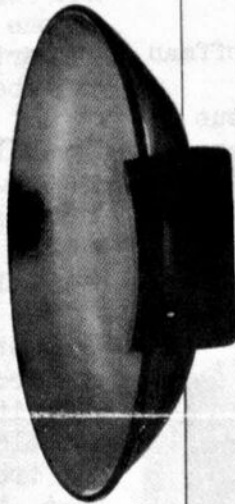
1321



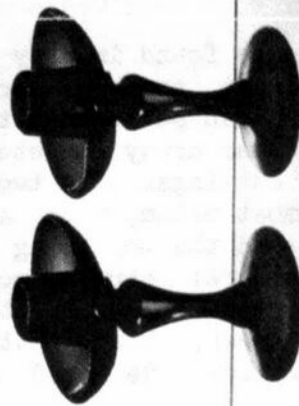
S-100



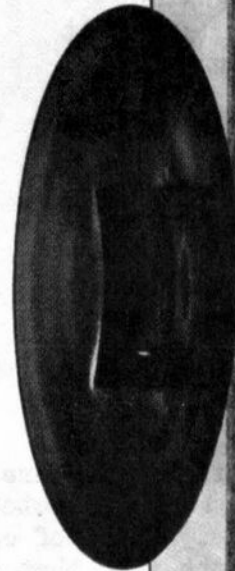
CS-48



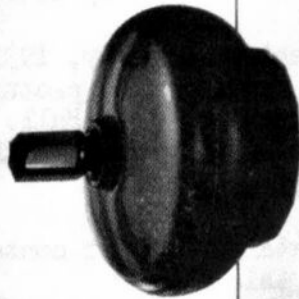
CS-81



S-121



CS-26



P-306



The Cambridge Glass Company

CAMBRIDGE, OHIO

All items furnished in CARMEN (Red) or CRYSTAL.

ivy balls

by George Hoffman

An advertisement in the May, 1931 issue of China, Glass and Lamps, pictures an all crystal #1236 footed Ivy Ball. This is the first known reference to this lovely piece of Cambridge glass.

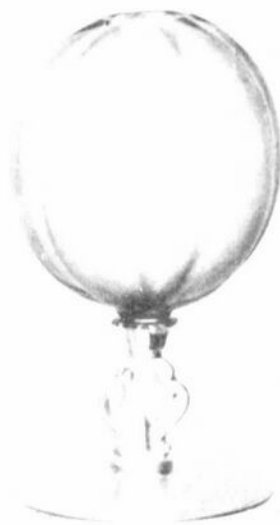
The 1930-34 Catalog Reprint contains three pictures of this Ivy Ball. Page 31-8 pictures it in crystal, page 32-9 lists it as a two-tone "Quick Seller" and page 34-11 shows it in crown tuscan.

Ivy Balls greatly enhance the lovely Cambridge color spectrum - either on display or in use. They are most decorative and also practical for use. As their name implies, they were used most often for growing ivy, either in water or dirt. Many of the ones we find today are water stained, or "sick", as many collectors call the unsightly stain. This of course is added testimony to the fact that they were well accepted and used by the housewife of that time.

Ivy Balls can be found in many different colors and almost endless decorations. In crystal, they can be found either plain or with an endless array of etchings and rock crystal cuttings. The two-tone effect is found most often, with a crystal stem and foot and the top being in any of the following colors: carmen, royal blue, dianthus pink, peachblo, light emerald green, forest green, ebony, heatherbloom, gold krystol, willow blue, and moonlight blue.

The foot and top are the same color on the crown tuscan ivy balls with a variety of gold encrusted decorations. We know of one

next column please ---



1236 Ivy Ball

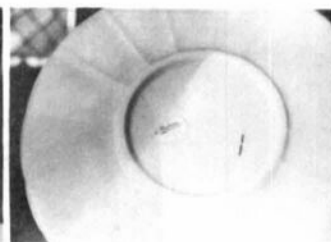
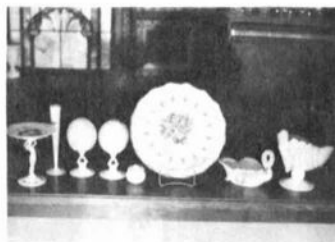
with a flashed or sprayed on type finish. Solid color ivy balls, other than crown tuscan and crystal, have not been found as of this writing, but they certainly are not beyond the realm of possibility. If anyone has such a piece or has seen one, we certainly would be interested in hearing about it.

Ivy Balls were evidently a popular item as they were in production for many years. The every day use that they were submitted to is probably the reason they are not very plentiful today.

Undoubtly they were easily knocked over and broken. Since they were not an expensive item, (a 1940 Price Guide lists them at \$16.50 per dozen) they evidently were not treated with the same Tender Loving Care that their owners shower upon them today.

QUESTIONS & ANSWERS

I have a 14" Crown Tuscan Seashell design plate with hand painted roses on it. On the back is a Gold foil paper label which reads "Charleton - hand decorated". Then there are numbers written in pencil under these words. The plate is also stamped "HAND PAINTED". Enclosed is small photos of plate described. Now, who and where is Charleton? Could you answer this in newsletter? --- Jack Roads, Calif.



ANSWER: Charleton is the pattern or decoration name as applied to hand painted pieces decorated by the Abels, Wasserberg and Company. This company used many blanks (mostly Crown Tuscan) from Cambridge as well as blanks from other companies.



Gold Foil Label



**"CAMBRIDGE ARMS"
Smart Table Appointments
DESIGNS for DINING**



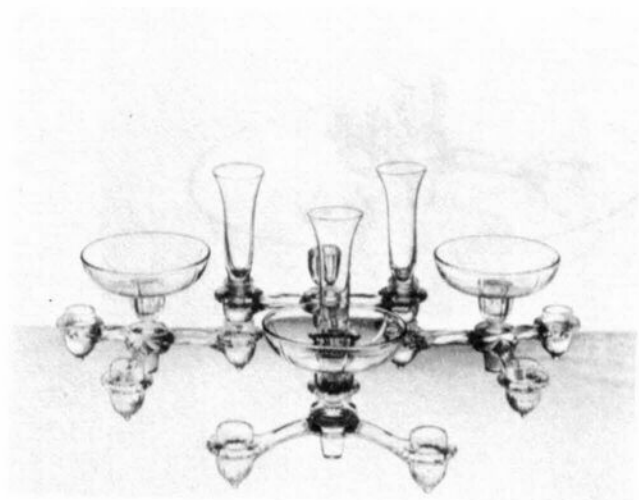
No. 22



No. 23



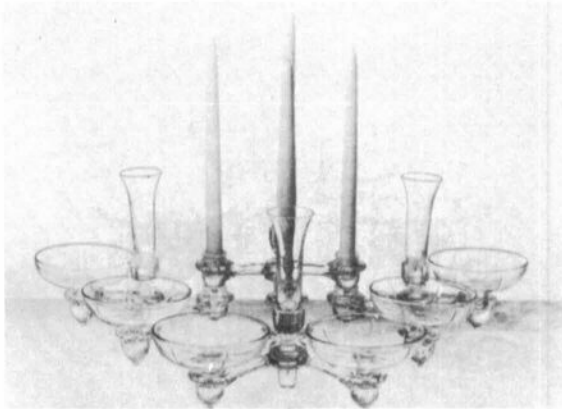
No. 26



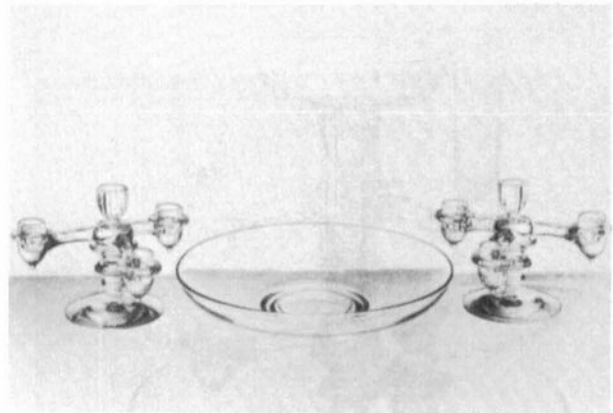
No. 25



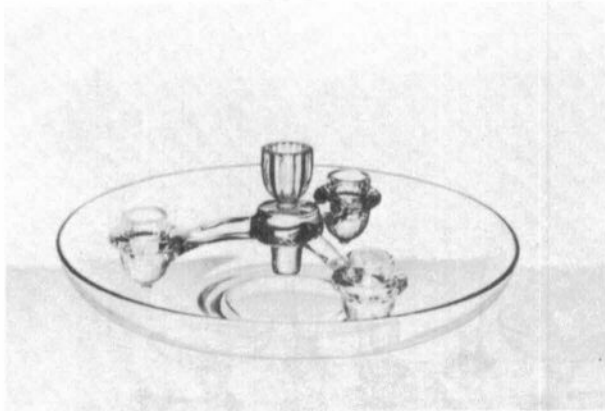
"CAMBRIDGE ARMS" Smart Table Appointments DESIGNS for DINING



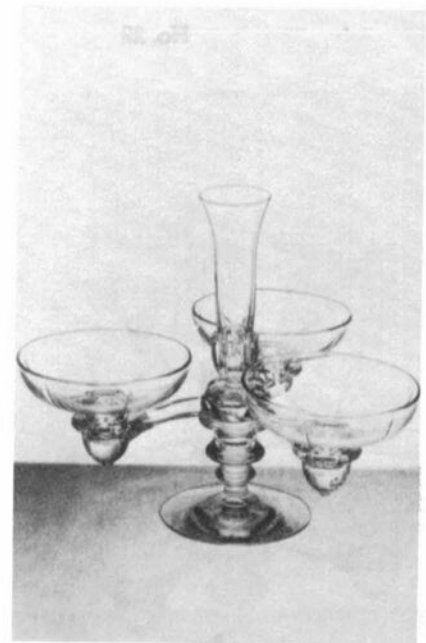
No. 27



No. 28



No. 30



No. 29

Club News

continued
from page 2

SPECIAL COMMITTEES

1977 ANTIQUE SHOW: David McFadden reported 650 attended the Show and that the net profit was \$1,528.41.

1977 AUCTION: No report.

OLD BUSINESS

None.

NEW BUSINESS

Janice Hughes reported the following has been donated to the Museum. An unfinished Nude stem, amber, brandy from Wilbur and Mary Henderson; an early picture of the Cambridge Glass Company factory from John Wolfe; and \$5 from Charles Upton, which he had received as commission for selling some glass.

President Smith opened the floor for discussion on the Auction merchandise.

Chairman Lynn Welker advised that several people would be handling the Mail Bids during the Auction. He also stated there would be four additional items added to the end of the Auction list.

The "Show & Tell" items were discussed by Lynn Welker.

President Smith reminded the Board members of a meeting at 9 AM Saturday.

A motion was made by Frank Wollenhaupt to adjourn at 8:45 PM.

Janice Hughes
Secretary

STUDY Club News

CAMBRIDGE SQUARES

The Cambridge Squares met at the home of Roy and Doris Isaacs, July 22nd, for their regular meeting and picnic.

next column please ---

It was decided to continue buying glassware for the Museum since the price and selection is probably better now than it will be later. A new tip board was started to earn more funds for this project. Charles Upton donated the Blue Willow dinner plate back to the Study Group since he turned out to be the winner from the previous tip board. The plate will be traded for a prize of comparable value, to be given this time. Four additional goblets have been purchased since the Convention.

Topics for future study were discussed. The topic for the evening was stems. Charles Upton and Doris Isaacs presented fifty stems for inspection with only a few duplicates. These were identified and compared with similarities and differences shown and discussed.

On the "Show and Tell" table were an etched Marjorie covered pitcher and syrup; several unusual goblets; a crystal Tuxedo cordial with carmen foot; a Star bread plate (ref: Bennett 1903 Reprint, pg. 38); and several fragments of glass dug from the dump at the old Cambridge Glass plant.

Next meeting will be at the home of David and Judy Hardesty.

Submitted by Doris Isaacs

HOKEY-POKEYS

The July meeting of the Hokey-Pokeys was held at the home of Joy and Dave McFadden in Galena, Ohio on Saturday, July 9th.

All members were present and our discussion centered around the results of our extensive research. Prior to the meeting several photographic printing sessions had been held in preparation for our review. Based on prior experience it will take a year or more to assimilate this new research material and of course, as in the past, any new information will be shared through the CRYSTAL BALL.

Our next meeting will be held on Saturday, September 24, 1977, at the home of Frank and Vicki Wollenhaupt in Dayton, Ohio.

Submitted by Sue Rankin

BOOKS FOR SALE

National Cambridge Collectors, Inc. is proud to announce that you can now order all of the available reference books on Cambridge glass directly from the Club.

Ohio residents add 4½% sales tax -- and send with your order to:

BOOKS
National Cambridge Collectors, Inc.
P. O. Box #416
Cambridge, Ohio 43725

1930-1934 CAMBRIDGE GLASS CO.
CATALOG REPRINT
by National Cambridge Collectors
(250 page reprint of
original catalog)
Hardbound with Price Guide - \$14.95

THE CAMBRIDGE GLASS BOOK
by Harold and Judy Bennett
(96 pages with 59 color plates)
----- \$ 9.95

1975 PRICE GUIDE TO
THE CAMBRIDGE GLASS BOOK
by Charles and Mary Alice Upton
(Prices for each item in
Bennett Book) - - - - \$ 1.75

CAMBRIDGE GLASS COMPANY
by Mary, Lyle and Lynn Welker
(120 pages of reprints from
eight old catalogs) - - \$ 6.95

CAMBRIDGE GLASS CO. BOOK II
by Mary, Lyle and Lynn Welker
(119 pages of reprints from
old catalogs) - - - - \$ 6.95

CAMBRIDGE, OHIO GLASS IN COLOR II
by Mary, Lyle and Lynn Welker
(15 color plates with descriptions
and notes) - - - - - \$ 5.95

1903 CAMBRIDGE GLASS COMPANY
CATALOG REPRINT
by Harold and Judy Bennett
(106 page reprint of
original catalog) - - - \$ 7.50

— Classified —

FIND a good selection of CAMBRIDGE GLASS among the many thousands of pieces of 20's and 30's colored glassware advertised each month in the DEPRESSION GLASS DAZE. Many top notch, nationally prominent dealers advertise with us each month! SPECIAL OFFER TO READERS OF THE CRYSTAL BALL!! Subscribe NOW for 12 months at \$5.50 and receive 15 issues! Write: DAZE, Box 57CCB, Otisville, Mich. 48463. Cash with orders, we cannot bill but we do accept BAC & MC.

FOR SALE: NUDE STEMS (4), #3011/2 table goblets, #3011/11 cocktails, amethyst. Oyster cocktails (3), crystal, original stickers. Perfect --- more available. BEST OFFER! Mrs. C. L. Leeper, 801 E. Hamilton, Kirksville, Missouri 63501 - 816-665-5655.

State Fair Report

by Sue Rankin

Once again Cambridge glass triumphed at the Ohio State Fair. Fifty-two pieces of Cambridge glass were entered in 14 classes and won 38 ribbons as follows: 6 First, 11 Second, 8 Third, 8 Fourth, 5 Fifth.

This year National Cambridge Collectors, Inc., was the sponsor of the Carmen (Red) class. First place went to Bill Smith for his Carmen Everglade leaves bowl. This is a truly stunning piece and certainly stood out in a class filled with lovely pieces. Even though entries in this class were not limited to Cambridge pieces, all winners in the class were Cambridge glass. This just goes to show that although we Cambridge collectors are prejudiced in our belief that Cambridge Carmen is the most beautiful, the judge fully agreed with us.

Members who entered their glassware in the Fair this year include the McFaddens, Rankins, Smiths, Uptons, and Wollenhaupt. Next year we hope to see even more Cambridge glass entered at the State Fair and ribbons going to Cambridge.

Pump House Antiques

111 East Main Street

P. O. Box 433

WEST BRANCH, IOWA 52358

Residence Phone: 319-337-5096 Business Phone: 319-643-2879

1 - #3400, Mandarin Gold, 12" bowl, shallow, ruffled, 4 toed -----	\$ 25.00
2 - Crystal, Seagull figure flower holder -----	42.00
3 - 4" Star candleholders, flat (pair) -----	12.00
4 - Emerald green, Mt. Vernon #52 Decanter w/crystal stopper and 4 - 2 oz. ftd. wines (set) -----	85.00
5 - Mt. Vernon, 1 oz. ftd. cordials (set of 6) -----	32.00
6 - #3077 Tally-Ho, amber w/gold Imperial Hunt Scene etch, on hdl. Decanter and 5 matching ftd. wines (set) -----	145.00
7 - Individual Caprice, creamer & sugar, ftd. (set) -----	18.00
8 - Martha Washington, carmen (amberina) 6" Comport, 2 1/4" low ftd.-	18.00
9 - Calla Lily candleholder (1) -----	18.00
10 - #3900, 2-lite candleholders, etched Rosepoint (pair) -----	55.00
11 - #3400 Ball Jug, royal blue w/crystal hdl. -----	65.00
12 - #942, pink creamer and sugar w/lid (pair) -----	12.00
13 - Cut Wild Rose, creamer & sugar - ref: 1930-34 Catalog, pg. J, very beautiful pattern same as #3200 Punch bowl (pair) -----	55.00
14 - #3078, amber, Shrimp cocktails w/inserts (3) (each set) -----	7.50
15 - Caprice, cruet w/stopper -----	32.00
16 - 10" bowl, light blue opaque, shape ref: Bennett Color Book, plate 2, row 2, #5, no base -----	30.00

Reference for following 5 items: Welker Catalog Reprint II

17 - #2631 Marjorie Near Cut large A nappy - pg. 99 -----	24.00
18 - #2631 Marjorie Near Cut ftd. sherbets - pg. 109 (3) (each) ---	4.50
19 - #2760 Daisy Near Cut 8" pickle dish - pg. 95 -----	9.00
20 - #2759 5" miniature 3-lite candelabra - pg. 119 -----	30.00
21 - #1012 Near Cut salt & pepper w/original tops worn - pg. 113 --	16.00

Reference for following 8 items: Bennett 1903 Catalog Reprint

22 - #2538 Molasses Jug - pg. 37 -----	22.00
23 - #2529 Molasses Jug, new top - pg. 37 & 38 -----	24.00
24 - #140 Mug, 4 oz. - pg. 39 -----	14.00
25 - #2504 Individual Sugar - pg. 19 -----	16.00
26 - #2589 Vase, flare top, seems to be tumbler mold fluted edge - pattern only pg. 25 -----	22.00
27 - #2507 Compote, low ftd., 8-3/4" wide, scalloped top - pattern only pg. 34 -----	26.00
28 - #11 Star Bread Plate - pg. 38 -----	22.00
29 - #671 Wine, small, stemmed - pg. 94 -----	28.00
30 - Sanitary Cheese Preserver, 5 1/2" square, 3 1/2" tall - original sticker -----	18.00

WE SPECIALIZE IN GLASS EARLY AND LATE

Your Satisfaction Guaranteed!

SASE and Postage Please!

DEALERS



DIRECTORY

<p>ANTIQUÉ ALLEY 24815 Broadway Bedford, Ohio 44146 216-232-7739 ---- Marie Spagnola CAMBRIDGE GLASS ROYAL DOULTON</p>	<p>BENICIA ANTIQUE SHOP 305 First Street Benicia, California 94510 OPEN 11 AM - 5 PM Closed Monday</p>	<p>BUSY BEE ANTIQUES 1044 Dublin Road Columbus, Ohio 43215 Robert Cain 614-486-8320 CAMBRIDGE ---- BROWSER'S WELCOME</p>
<p>CHURCH STREET ANTIQUES 6 Church Street Boston, Massachusetts 02116 George or Frank --- 617-426-1048 CAMBRIDGE, HEISEY, GENERAL LINE</p>	<p>Z. E. LOPES - 707-745-0978 VISIT HISTORIC BENICIA and its 28 shops Off Interstate #80 ----- ----- North of San Francisco</p>	<p>D & D ANTIQUES 184 East Kossuth Street Columbus, Ohio 43206 DICK SLIFKO ----- 614-443-6020</p>
<p>THE DARROW COLLECTION Highway 1A and Jungle Hut Road Flagler Beach, Florida 32036 Phone 904-445-3805 Mail Address: Rt. #1, Box 167 St. Augustine, Florida 32084</p>	<p>D'MARIE'S ANTIQUES Rt. #1, c/o Eastern Antique Mart Thornburg, Virginia 22565 703-582-5755 ----- Jim Rankin OPEN DAILY - EXCEPT MONDAY</p>	<p>FINDER'S KEEPER'S ANTIQUES P.O. Box 303 P.O. Box 16023 Dayton, O. Columbus, O. 45401 43216 513-254-2937 614-965-1906 SPECIALIZING IN CAMBRIDGE GLASS!</p>
<p>MARY & WILBUR HENDERSON 303 Guilford Avenue Woodsfield, Ohio 43793 Shows Only -- 614-472-1133 SPECIALIZING IN CAMBRIDGE GLASS!</p>	<p>HERITAGE ANTIQUES Rt. #5, Cambridge, Ohio - 43725 614-439-3241 Take N.8th St.Rd.(County Rd.#33) TURN LEFT AT RAILROAD TRACK</p>	<p>HOBBY HOUSE ANTIQUES Rt. #1, Cambridge, Ohio - 43725 614-432-6971 - Frank & Lena Take Rt.#209 W.From Cambridge To RT. #658 - NORTH 1½ MILES</p>
<p>HOFF - HAVEN ANTIQUES 21 Half Moon Lane Tarrytown, New York 10591 Shows-Mail-No Lists-914-631-2140 CAMBRIDGE, ROSE IN SNOW FOSTORIA</p>	<p>GEORGE HOFFMAN ANTIQUES 129 South 4th Street Newark, Ohio 43055 --- 614-345-8550 ---</p>	<p>MARGARET LANE ANTIQUES 2 E. Main Street New Concord, Ohio 43762 Lynn Welker ----- 614-826-4418 CAMBRIDGE GLASS MATCHING SERVICE</p>
<p>OUR GLASS ANTIQUES 20th CENTURY COLLECTIBLES featuring CAMBRIDGE GLASS Paul & Ginny Henderson - Box 134 Iselin, NJ 08830 -- 201-283-3181</p>	<p>OLD TOLL GATE ANTIQUES Route #5, Box 7X Milan, Illinois 61264 SPECIALIZING IN HAVILAND CHINA MATCHING SERVICE</p>	<p>PRESIDENTIAL COIN & ANTIQUE CO 6222 Little River Turnpike Alexandria, Virginia - 22312 Gail B. Levine ---- 703-354-5454 WANT LISTS SOLICITED-OPEN 6 DAYS</p>
<p>S & J ANTIQUES 5616 Hensel Woods Road Gahanna, Ohio 43230 Sue & Jack Rettig - 614-855-1711 CAMBRIDGE GLASS OUR SPECIALITY</p>	<p>Use Schleigers book numbers or send saucer for pattern match. SASE APPRECIATED Marie Baker ----- 309-787-2392 GENERAL LINE OF ANTIQUES</p>	<p>PUMPHOUSE ANTIQUES 111 E. Main St., Box 433 West Branch, Iowa 52358 Closed Monday - Sept. thru May 319-643-2879 - or - 319-337-5096 OUR SPECIALTY GLASS EARLY & LATE</p>
<p>A. SPRINGBORN P. O. Box E. G. #962 Melbourne, Florida - 32935 Shop #34, Webster, Florida OPEN EVERY MONDAY 305-254-7439</p>	<p>NATIONAL CAMBRIDGE COLLECTORS, INC. P. O. Box #416 Cambridge, Ohio - 43725</p>	
<p>WOLFE'S GLASS EMPORIUM 330 Woodlawn Avenue Cambridge, Ohio 43725 John Wolfe ----- 614-432-2590 WED. & FRI. 1-5PM or APPOINTMENT</p>	<p style="text-align: center;">--- FIRST CLASS MAIL ---</p>	

Insert for Cambridge
CRYSTAL BALL
September 1977
Issue No. 53

1977

AUCTION RESULTS

NATIONAL CAMBRIDGE



COLLECTORS INC.

Held August 6, 1977, at
Howard Johnson's Motor
Inn, Columbus, Ohio.

Please use this list to
fill in the blanks on
the Auction list sent
with your July, 1977
issue of CRYSTAL BALL.

1.	\$ 22.50	(carmen)
2.	20.00	
3.	15.00	
4.	20.00	
5.	15.00	
6.	5.00	ea. (4)
7.	21.00	
8.	10.00	
9.	17.50	
10.	11.00	
11.	5.00	ea. (4)
12.	65.00	
13.	4.00	ea. (10)
14.	1.00	ea. (7)
15.	17.50	
16.	11.00	ea. (2)
17.	6.00	ea. (12)
18.	15.00	
19.	15.00	
20.	18.00	
21.	12.50	
22.	40.00	

23.	\$ 12.50	
24.	12.50	
25.	3.00	ea. (3)
26.	25.00	
27.	17.50	
28.	17.50	
29.	3.00	ea. (12)
30.	110.00	
31.	7.00	
32.	18.00	
33.	40.00	
34.	15.00	
35.	35.00	
36.	17.50	
37.	40.00	
38.	35.00	
39.	3.00	ea. (2)
40.	5.00	
41.	70.00	
42.	75.00	
43.	27.50	
44.	21.00	
45.	7.00	
46.	20.00	
47.	90.00	
48.	10.00	
49.	22.50	
50.	50.00	
51.	8.00	ea. (2)
52.	20.00	
53.	9.00	ea. (2)
53a.	15.00	
54.	45.00	
55.	62.50	
56.	18.00	ea. (2)
57.	2.00	ea. (5)
58.	5.00	ea. (9)
59.	5.00	
60.	2.00	
61.	3.00	ea. (2)
62.	6.00	
63.	55.00	
64.	115.00	
65.	4.00	ea. (4)
66.	5.00	ea. (4)
67.	65.00	
68.	35.00	
69.	3.00	
70.	8.00	
71.	15.00	
72.	55.00	
73.	10.00	
74.	10.00	
75.	30.00	
76.	2.00	ea. (8)
77.	85.00	
78.	35.00	
79.	\$ 20.00	
80.	15.00	
81.	20.00	
82.	12.50	
83.	40.00	
84.	10.00	
85.	17.50	
86.	12.50	
87.	25.00	
88.	7.00	ea. (2)
89.	2.00	ea. (2)
90.	2.00	ea. (2)
91.	40.00	
92.	60.00	
93.	12.50	
94.	25.00	
95.	20.00	
96.	8.00	ea. (7)
97.	40.00	
98.	75.00	
99.	8.00	ea. (7)
100.	37.50	
101.	15.00	
102.	42.50	
103.	22.50	
104.	10.00	
105.	7.50	
106.	42.50	
107.	12.50	
108.	27.50	
109.	17.50	
110.	15.00	
111.	17.50	
112.	11.00	
113.	5.00	
114.	2.00	ea. (6)
115.	9.00	
116.	10.00	
117.	17.00	
118.	25.00	
119.	6.00	
120.	12.50	
121.	15.00	
122.	30.00	
123.	8.00	
124.	45.00	
125.	7.00	
126.	120.00	
127.	42.50	
128.	17.50	
129.	70.00	
130.	95.00	
131.	50.00	
132.	2.00	
133.	20.00	
134.	22.50	
135.	57.50	ea. (2)

(OVER)

136.	\$ 12.50		195.	\$ 17.50	
137.	22.50		196.	20.00	
138.	15.00		197.	4.00	
139.	10.00		198.	2.00	
140.	7.50		199.	19.00	
141.	14.00		200.	21.00	
142.	85.00		201.	12.00	
143.	8.00		202.	10.00	
144.	5.00		203.	17.50	
145.	13.00		204.	8.00	
146.	5.00		205.	20.00	
147.	11.00		206.	40.00	
148.	27.50		207.	25.00	
149.	25.00		208.	12.50	
150.	550.00		209.	20.00	
151.	7.50		210.	5.00	
152.	4.00	ea. (6)	211.	3.00	ea. (6)
153.	10.00		212.	9.00	
154.	40.00		213.	37.50	
155.	25.00		214.	8.00	
156.	45.00		215.	11.00	
157.	7.00		216.	95.00	
158.	22.50		217.	75.00	
159.	27.50		218.	5.00	
160.	80.00		219.	4.00	
161.	25.00		220.	35.00	
162.	25.00		221.	9.00	
163.	22.50		222.	20.00	
164.	15.00		223.	10.00	
165.	4.00		224.	40.00	
166.	11.00		225.	4.00	ea. (4)
167.	5.00		226.	4.00	ea. (2)
168.	9.00		227.	9.00	
169.	45.00	(1)	228.	8.00	ea. (4)
	42.50	(1)	229.	6.00	
170.	20.00		230.	6.00	
171.	42.50		231.	9.00	
172.	65.00		232.	1.00	
173.	35.00		233.	4.00	
174.	40.00		234.	60.00	#1321, 28 oz. decanter & 6 sherry's, Amethyst
175.	1.00		235.	17.50	#1237 ring stem bell vase, Amethyst
176.	5.00		236.	11.00	#208 Caprice cigarette box (no lid) & 4 #213 ash trays (1 chipped) Moonlight Blue
177.	85.00				
178.	16.00		237.	7.00	3400/48 bowl, 12", ftd., fancy edge, Crystal
179.	27.50				
180.	9.00				
181.	20.00				
182.	17.50				
183.	5.00				
184.	7.00	ea. (2)			
185.	75.00				
186.	35.00				
187.	6.00				
188.	8.00				
189.	9.00				
190.	3.00				
191.	2.00				
192.	15.00				
193.	25.00				
194.	6.00				