

Cambridge



Crystal Ball

ISSUE NO. 48

APRIL 1977

Published monthly by the NATIONAL CAMBRIDGE COLLECTORS, Inc.
To encourage and to report the discovery of the elegant and boundless product
of the Cambridge Glass Company, Cambridge, Ohio

Thoughts from the President - - - -

With the majority of our activities now being directed toward the Convention and the Show, we thought that an introduction to the Cambridge area would be appropriate.

Located in southeastern Ohio at the intersection of Interstate 70 and Interstate 77 it is easily accessible from all points of the compass.

Situated, as it was, on the historic Zane Trace and that other trail that was later to become known as the National Pike, Cambridge and Guernsey County saw many of our ancestors as they made their way westward. It is therefore rich in historical information for the history or genealogy buff.

If your other interests include the great out-of-doors, the area abounds in streams and lakes for fishing and boating. Many of these recreation sites have campgrounds.

To those of you with a really serious case of "Glassitis", Cambridge and the near-by area has much to offer.

Cambridge boasts five operating glass factories at the present time. Four of these are glass producers and the fifth a cutting shop. Each of these plants have show rooms and welcome visitors.

The owners of these plants and many of the employees are former Cambridge Glass workers who still employ tools, machines, and methods similar to those that were used at Cambridge Glass. In some instances, the patterns and shapes are the same.

Within approximately one hundred miles are many more operating glass companies which include Imperial, Fostoria, Viking, Rainbow, and Blenko to name just a few. Within this radius are also several fine museums.

For browsing, in Cambridge there is the A. J. Bennett home (now apartments), the old Cambridge Glass plant (can only be viewed from outside the fence), and many quality shops featuring Cambridge glass as well as fine antiques. See your Dealers Directory for a good start. We will also add a note here that these dealers do enjoy selling.

All things considered, we highly recommend that you consider devoting a few days of your vacation to enjoying the fine hospitality that you will find at Cambridge.

It is a small town with a big heart.

Bill

MEMBERSHIP RENEWAL NOTICE

If the date on your address label is -

4-77

This is your last issue of the Crystal Ball! Don't miss a single issue - RENEW YOUR MEMBERSHIP NOW!

FORM IS ENCLOSED FOR YOUR CONVENIENCE!

CAMBRIDGE CRYSTAL BALL

Official publication of National Cambridge Collectors, Inc., a non-profit corporation with tax exempt status. Published once a month for the benefit of its members. Membership is available for individual members at \$10 per year and additional members (12 years of age and residing in the same household) at \$3 ea. All members have voting rights, but only one CRYSTAL BALL will be mailed per household.

Back issues of the CRYSTAL BALL are available to members only, at a cost of 60¢ ea. or 12 issues for \$7.

1976-77 Officers & Committee Chairpersons

PRESIDENT ----- William C. Smith
VICE-PRESIDENT ----- David McFadden
SECRETARY ----- Janice Hughes
TREASURER ----- David McFadden

BUDGET & FINANCE ----- William C. Smith
BY-LAWS -----
CONVENTION ----- John Wolfe
MEMBERSHIP ----- Sue Rankin
MUSEUM ----- Larry Hughes
PROGRAM & ENTERTAINMENT ----- Doris Isaacs
PROJECT ----- David Rankin
PUBLICITY ----- Jack Rettig
STUDY GROUP ADVISORY --- Frank Wollenhaupt

1977 ANTIQUE SHOW ----- Evelyn Allen
1977 CAMBRIDGE AUCTION ----- Lynn Walker

CRYSTAL BALL Editor ----- Phyllis D. Smith

CLASSIFIED ADVERTISING RATES

5¢ per word \$1.00 minimum

We cannot mix type size in classified advertisements. Abbreviations and initials will count as words. Payment in full must accompany all ads.

DISPLAY ADVERTISING RATES

	Members	Non-Members
1/8 page -----	\$ 4.00	\$ 6.00
1/4 page -----	7.00	10.00
1/2 page -----	12.00	18.00
3/4 page -----	17.00	25.00
Full page -----	22.00	33.00

DEALERS DIRECTORY

1" ad ----- \$6.00 for 6 months

Cambridge CRYSTAL BALL assumes no responsibility for items advertised and will not be responsible for error in price, description or other information.

Advertising copy must be in our hands by the 15th of each month to assure publication in our next issue. Advertisements containing reproductions will not knowingly be accepted unless clearly stated.

PLEASE ADDRESS ALL CORRESPONDENCE TO

Cambridge CRYSTAL BALL
National Cambridge Collectors, Inc.
P. O. Box #416
Cambridge, Ohio 43725

PLEASE NOTIFY US IMMEDIATELY OF ANY CHANGE
IN YOUR ADDRESS!

Please enclose a self-addressed, stamped envelope when requesting information!!

Club News

National Cambridge Collectors, Inc.
Quarterly Meeting
February 20, 1977
Columbia Gas of Ohio, Cambridge, Ohio

The meeting was called to order at 1:40PM by President Smith with 12 Board members, 30 club members and one guest in attendance. The minutes of the previous meeting held on November 14, 1976, were read by Janice Hughes and approved.

The Treasurer's report was given by David McFadden, showing the club has a balance of \$4084.08 and the Museum Fund \$9112.17.

COMMITTEE REPORTS

BY-LAWS: No report.

CONVENTION: Chairman John Wolfe advised that the costs for the convention will be the same as last year. He asked the membership to realize that these prices include convention expenses as well as meals. He then gave the types of menu's available for the convention and asked for a show of hands for or against buffet style as opposed to sit-down dinner. The sit-down dinner had no opposition.

Joy McFadden and Vicki Wollenhaupt, members of the Display Room committee, asked for response from the letter in the upcoming CRYSTAL BALL. They also explained the types of display they were striving to have.

CRYSTAL BALL: Editor Phyllis Smith reported that starting with the April issue there will be a new article dealing with the collections of our members. She also reported mailing over 300 issues in February, and that the Dealers Directory has increased from 6 listings to 22 in sixteen months. An index of back issues of the CRYSTAL BALL has been completed by Josephine Barstow and will be available soon.

MEMBERSHIP: Chairman Sue Rankin reported that as of February 1, there are 309 \$10 members, 106 \$3 members and 4 honorary members, for a total of 419. At this time 15 are delinquent.

PROJECT: Chairman David Rankin reported he had not received any correspondence regarding the new Price Guide for the 1930-34 Catalog Reprint.

continued on page 12

QUARTERLY MEETING REPORT

by Doris Isaacs

Nasty weather does not keep dedicated Cambridge collectors at home! This fact was proven beyond a shadow of a doubt as a total of forty-four members and guests crowded the meeting room of Columbia Gas of Ohio, Inc., Cambridge, Ohio, on Sunday afternoon, February 20th. The occasion was our February Quarterly meeting, and those in attendance were glad they had made the effort to attend.

The program for the meeting was on Etchings and we had a display of 78 different etchings produced by Cambridge. Of course Cambridge produced many etchings that were not on display, but the ones present proved to be an extremely good overall array of patterns.

John Wolfe and Lynn Welker proved to be excellent narrator's, guiding us through a most fascinating account of the etching process. There were several members present who were able to add first hand knowledge, either from their own experiences in the etching department of Cambridge Glass Company, or from that of their relatives. Mr. & Mrs. Chester Gamble of Cuyahoga Falls, Ohio, Mr. & Mrs. R. A. Cohagen of Eucyrus, Ohio, and Mr. J. P. Martin of Blairsville, Pa. added greatly to the discussion.



SMALL PORTION OF THE ETCHING DISPLAY

It is impossible to describe the many etchings, with their variations on color as well as the gold and enamel filled pieces. You really had to be there to examine first hand the many different patterns, in order to derive the full benefit from such a program.

Before the program started, President Bill Smith conducted our business meeting. This was our last meeting until Convention.

John Wolfe our Convention chairman announced that convention plans are under way and further announcements will appear in the CRYSTAL BALL. It was unanimously decided that the banquet would be a sit-down meal rather than a buffet. Costs will be approximately the same as last year and all meetings will be held at the Cambridge Country Club again this year.

Joy McFadden, a member of the convention Display committee requested that members please respond to the letter published in the March issue of the CRYSTAL BALL as soon as possible. This will allow them ample time to make final arrangements for insurance and spacing.

Phyllis Smith, Editor for the CRYSTAL BALL announced that we will have a new feature article beginning with the April, 1977 issue. She encouraged all members to take part in this new endeavor. Please write a short narrative about yourself and your Cambridgeglass collection. Send it along with a photo of yourself (black and white glossy) to her in care of the CRYSTAL BALL. It is hoped that this series of articles will help us to become better acquainted. She also requested that more of our member-dealers support the CRYSTAL BALL by placing an ad in our Dealers Directory.

Dave Rankin reminded us that we cannot hope to have an update for our 1930-1934 Catalog Reprint unless we all work together. He informed us that he has received NO response to his request for help that appeared on page 3 of the December, 1976 issue of the CRYSTAL BALL. It is very important that we give him all the help we can in order that this revision can be made. Please do your share--write to Dave as soon and as often as you have color and price information available.

Two stemware pieces (the Arcadia pattern and a #3121 stem) were donated to the Museum fund by Jo Barstow. Charles Upton had also made a donation of a Blue Willow dinner plate. Our thanks to both of these generous members.

Evelyn Allen, chairman for our Antique Show & Sale, announced that the location will be the Guernsey Catholic Central High School - the same as last year. She said they are planning an even better Show this year, so you will want to start plans now to attend. The dates are the same as the Convention - June 24, 25 & 26, 1977.

Our Auction chairman Lynn Welker announced the location and date are not yet final.

continued on page 11

NEARCUT Patterns

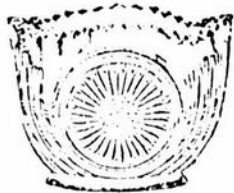
by Phyllis Smith

Near-Cut Pattern #2636, is a truly exquisite design. The brilliance of the glass and the artistry of the mold-maker give credence to the NEAR-CUT name.

Few pieces have been found in this pattern, but those that have are unforgettable in their beauty. None of the pieces found thus far have been marked, but they don't really need to be once you have fixed the design in your mind.

The pattern is a truly outstanding one and it is hoped that you will find a piece for your collection one day soon.

"NEARCUT" DESIGN 2636



Spoon Holder.



Sugar.



Cream.



Butter Dish.



Wine 3 oz.



Squat Oil Bottle.



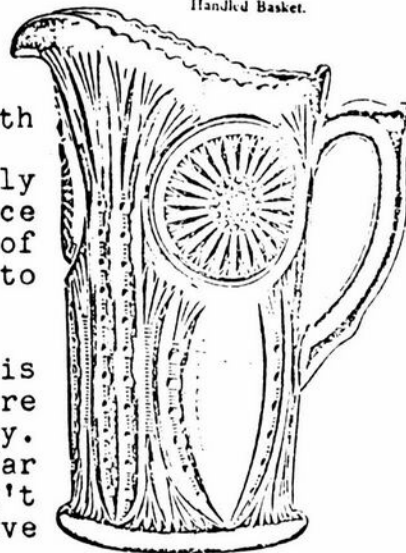
Tall Oil Bottle.



Quart Decanter.



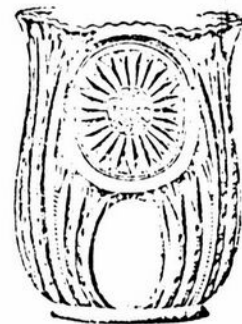
Handled Basket.



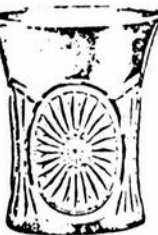
Half Gallon Standard Pitcher.



Flower Vase, C Shape.



Tall Celery Holder.



Tumbler.

This is a very rich plain cut effect with plenty of deep mitre brilliancy, and at the price it is an excellent pattern.

PRICE LIST

	List Price Per Lbs.	Original Pkg. Lbs.
Four Piece Set Unfinished	4 00	2
Cream, Unfinished	70	9
Spoon, Unfinished	60	13
Sugar and Cover, Unfinished	1 20	7
Butter and Cover, Unfinished	1 50	5
Tall Oil, 5 ounce capacity	1 60	13
Squat Oil, 6 ounce capacity	1 60	13
11 inch Plate	1 65	5 1/4
7 1/2 inch Plate	90	15
7 1/2 inch Fancy Pickle Tray	80	12
10 inch Celery Tray	1 50	7 1/4
Tall Celery, height 6 inches	1 60	5
8 inch Vase, C Shape, or Sweet Pea	1 60	3
7 inch Bouquet Holder	1 40	4 1/4
Basket	1 60	4
Half gal. Standard Pitcher, height 9 1/2 inches	3 00	2
Quart Pitcher, height 8 1/2 inches	1 60	3
Tumbler	80	16
Quart Decanter, height 11 inches	5 00	3 1/2
Goblet, 10 1/2 ounce capacity	80	7
*Wine 2 ounce capacity	50	28
8 inch Nappy finished to—		
A Shape—8 1/2 inches diameter	2 40	3 1/4
C Shape—9 1/2 inches diameter	2 40	3 1/4
D Shape—10 1/2 inches diameter	2 40	3 1/4
E Shape—10 1/2 inches diameter	2 40	3 1/4
7 inch Nappy finished to—		
A Shape—8 inches diameter	1 65	5 1/4
C Shape—8 1/2 inches diameter	1 65	5 1/4
D Shape—9 1/2 inches diameter	1 65	5 1/4
E Shape—9 inches diameter	1 65	5 1/4
5 inch Nappy finished to—		
A Shape—5 1/2 inches diameter	85	12
C Shape—6 inches diameter	85	12
D Shape—7 inches diameter	85	12
E Shape—7 inches diameter	85	12
*4 inch Nappy, Unfinished	33	25
8 inch Nappy, Cupped or Rose Bowl	2 40	3
7 inch Nappy, Cupped or Rose Bowl	1 60	4
6 inch Nappy, Cupped or Rose Bowl	85	10

We quote above prices for FULL PACKAGES ONLY. When LESS QUANTITY is ordered, ADD 10 PER CENT. to above prices.

Items MARKED WITH * when ordered in GROSS LOTS or over take package prices.

Cambridge Connoisseur

by Karen Isaacs



KAREN ISAACS

I began collecting Cambridge Chantilly etched pieces about two and a half years ago. My first pieces were a sugar and creamer given to me for my high school graduation by my parents. I had been considering the patterns for about two years before I finally chose Chantilly.

My goblets are on the #3700 stem. Chantilly on this stem is numbered 3775. (see Figure #1)

I have several pieces that are my favorites, which were very hard to find. They include an ivy ball on the #1066 stem; a 10 1/2" vase on a sterling silver base; a 32 oz. martini pitcher on a sterling silver base; a gold encrusted cake plate; a 32 oz. sherry decantor; and several 12 oz. tumblers that are approximately 5 1/2" tall with sham bottoms, which were still wrapped in the original papers.



FIGURE
#1

3775
4 1/2 oz. Claret

Another favorite piece is the sterling silver based coaster or ashtray. Although it does not have the scrolls which are characteristic of Chantilly etching, it does have the flowers that are unique to that etching.

These flowers are similar to the Rosepoint flowers and pieces without the identifying marks of the scrolls or medallion are easily mistaken for one another. (see comparison in Figure #2) My mother recently purchased a cigarette box bottom that she thought was Chantilly without the scrolls. When we compared it with Chantilly and Rosepoint it turned out to be Rosepoint without the medallion.



FIGURE #2

To complete my set I am interested in finding a few extra stemmed goblets, serving pieces and especially unusual pretty pieces. I am also interested in finding colored pieces with Chantilly etching and would be happy to learn about such pieces in other collections.

Perhaps one of our readers would write an article on etched colored pieces for the CRYSTAL BALL. I'm sure we would all benefit from such an article.



EDITORS NOTE: Karen is a delightful young lady who lives in Cambridge, Ohio, with her parents, Doris and Roy Isaacs. She has been a member of N.C.C. since November, 1975. She is 20 years of age and is employed in the Finance Department of National Cash Register Co. In the short period of two years her collection has grown to well over 100 pieces of etched Chantilly. We appreciate her sharing her knowledge of Chantilly with us.

PRICES here & there

by N.C.C. Members and Phyllis Smith

HAPPY EASTER! It is hard to believe that another year has passed and it is time to expect that Bunny one more time! It will be interesting to see how many of us receive a Cambridge glass basket from him this year. Let us hear from you if you are lucky enough to find one hidden behind the couch!

We have a lot of interesting prices to pass on to you this month, so we will get right down to business. Some of these prices are a couple of months old -- but they are still current enough to be worth passing on.

A new reporter from New York state sent us some very interesting prices. Besides reporting what the item sold for, they also included the price originally asked for the item. A #1044 (10") peachblossom swan, marked and mint, asking \$75, sold for \$52.50. Ten heatherbloom punch cups with flared side, marked, all 10 for \$15. Inverted Strawberry, 6½" nappy in green Carnival, asking \$18, sold for \$15. Six #4122 etched Diane 1 oz. cordials, asking \$28, purchased all six for \$23 at a Mall Show.

Also from New York comes the report of six crown tuscan Nude stem cocktails with amethyst bowls selling for \$140 for all six. A pair of crown tuscan two-lite Dolphin candlesticks sold for \$35 for the pair, and a nine piece cordial set with Ball decanter and eight tumblers in royal blue sold for \$18.

At a show in Rochester we understand that a King Edward engraved oil and vinegar cruet with sterling silver Gadroon base sold for a mere \$20. At the same show moonlight blue 6" and 8" plates etched Apple Blossom were selling for \$2 each.

A pair of ring stem single-lite candlesticks with bobeches and prisms (one prism missing from each stick) etched Chantilly, were purchased from a church bargain store in Florida for \$20. At a Flea Market a 3", marked, crown tuscan swan was grabbed up for \$18.

One of our Ohio reporters has sent us the following information: Roselyn goblet \$5; moonlight blue 1½ oz. pinch optic tumbler \$1; pistachio shell 3-ftd. ash-tray \$2.50; amethyst Bitters bottle \$8; and an Elaine etched bud vase \$11.

Also from Ohio we hear that someone was lucky enough to purchase Rosepoint cups and saucers for \$18 a set; Rosepoint sugar and creamer set for \$20; a milk glass 4½" Caprice vase \$12; milk glass Caprice 3 oz. cruet \$30; and a 4-ftd., signed, 3" carmen nut cup for \$12.50.

Of special interest to our Carnival glass collectors is this next report. We hear very little about Carnival glass prices since there is so little of it around.

The following prices were brought at auction and private sales during the month of February in the state of Missouri. Tomahawk, blue base glass (Welker Reprint II, pg. 115, #3561) \$1,250. Venetian vase, green (Welker II, pg. 117, #2340 - this lamp base is exactly the same as the vase) \$675. Buzz-Saw cruet, 4 oz., marigold (Welker II, pg. 116, #2669) \$210. Inverted Feather parfait glass, marigold (pattern #2651) \$28. Inverted Thistle water set, purple, \$3,300. The Inverted Strawberry water set, purple priced at \$1,800 did not sell. A Double Star (same pattern as Buzz-Saw) water pitcher and three tumblers, green \$375.

Our Carnival glass reporter also asked the following question: "I was told a few years ago that Cambridge did their own iridizing right there in town, but other people keep saying that Millersburg did the iridizing of Cambridge pieces. Is there any consensus that you know of on this matter among N.C.C. members?" If anyone out there can give us any information on this, please do so and we will see to it that the information is passed on for the benefit of everyone.

Several members sent information on one or two items they had purchased and they are as follows: a 6½" light green swan \$40; an amber 8" figure flower holder \$75; a small Nautilus cruet \$2.50; an amethyst ring stem ivy ball \$14; and a Martha Washington, milk glass, individual creamer \$3.50. The above prices came from the Ohio, Pennsylvania, Michigan and Indiana area.

This brings us up to date on the prices you have sent in thus far. Please be sure to take a few minutes and let us hear from you soon.

"If we were to bring misfortunes into a common store so that each should receive an equal share, the majority would be glad to take back their own misfortunes and depart."

Sorocrates

Let's Get Acquainted

by Phyllis Smith



This month the spotlight is focused on our Publicity chairman for the 1976-77 year, John F. Rettig of Gahanna, Ohio.

Better known to his friends as Jack, he and his wife Sue have been members of National Cambridge Collectors, Inc., since November, 1973. In June, 1976, he was elected to a four year term as a member of your Board of Directors.

Jack and Sue became interested in collecting Cambridge glass in 1972 when they purchased a beautiful bowl at an auction and learned that it was Cambridge. This in turn led them to buy a book on Cambridge and as they so aptly stated, "we were off and running".

Since becoming members of N.C.C., they have spent many hours researching Cambridge glass throughout Ohio, with special trips to Washington, D. C. and Philadelphia. This information has been shared with us through their articles "Touch of History" which have appeared in the CRYSTAL BALL over the past two years.

Jack was born February 14, 1935 in Liberty Center, Ohio, the son of Walter and Mary Rettig. At the ripe old age of eight years he became self-employed as a newspaper carrier and continued in this endeavor until he reached the age of 16, and took a position in the local book store.

During his school years he was active in basketball, football and baseball, winning a basketball scholarship to Miami Univer-

sity in Oxford, Ohio. He was also a member of the National Honor Society and served as President of his Latin Club. After two years at Miami University, he spent five years at Ohio State University, graduating in 1961 with a Masters degree in Electrical Engineering. While in college he was a member of the honorary fraternity Etta Kappa Nu.

After college he was employed for a time by Ohio Bell Telephone Co. in Columbus, Ohio and A.T. & T. in New York City. He is presently employed by Bell Telephone Labs. in Columbus, Ohio, as Engineering Supervisor Switching System Development.

Jack and Sue A. Scott of Washington C. H., Ohio, started going steady in the ninth grade and claim that they "still are". However they were married in October, 1955 and are the parents of three children. Their eldest daughter Kit is 20 and a third year Art major at O.S.U., son Layne is 18 and in his first year at O.S.U., and still at home is daughter Erin who is 15 and a ninth grade student, cheerleader, gymnast and track member at Gahanna High.

Jack has worked on many committees for N. C. C. which include: 1974 Convention Hospitality; 1975 Convention Display Room; 1975 Nominating; and 1975-76 Program and Entertainment.

He and his wife are also dealers in Antiques, doing business as S & J Antiques, by mail and at quality shows. They are also members of the Presbyterian Church, which Jack serves as a Trustee.

Jack is one more of our busy members who is doing a splendid job as a member of your Board of Directors.

Hoffman Replaces Coyle

Mr. George W. Hoffman of Newark, Ohio was named at the February meeting of the Board of Directors to fill the position vacated by Mr. Robert Coyle.

George has been a member of National Cambridge Collectors since May of 1974. His knowledge of Cambridge glass and his business experience should prove beneficial to the overall operation of the organization.

In the near future we will carry an interview with George in "Let's Get Acquainted".

Patterns

Caprice..

by Bill Smith

PART V

Conclusion!! Not to the total Caprice story, nor to the many collections that will still continue to grow, just the conclusion to this series of articles.

We have reached that point where the volume of new information will not warrant the time and space required.

In these articles we have attempted to bring you the majority of the Caprice story. There will, perhaps, always be some additional bit of new material to add, such as additional item numbers, a few additional catalog pictures, and always the non-production color usages. Perhaps an update will become worth while at some time in the future.

One area that we have not to-date covered in this series is that of Non-Cambridge Caprice items. We will now try to shed a little ray light on those items.

Most of you must be aware by now, that the Cambridge Company was purchased after it's closing by the Imperial Glass Co. of Bellaire, Ohio. Their purchase included molds and trade marks as well as existing stocks that was still in the plant. All except the pharmaceutical line of production.

These molds were moved to the Bellaire plant and the Imperial company has continued the production of many of the patterns that were developed by Cambridge. One of these is the Caprice pattern. The full line has not been continued, but several individual items have been made by Imperial. One item that we see quite often is the #165 3 Footed Candy Box & Cover. This has been made in crystal, amber, antique blue, sunshine yellow, and lt. green. The colors are very easily recognized as non-Cambridge. The crystal is another story. We do not have any sure way of distinguishing a late Cambridge item from an Imperial item.

Some of these Imperial items were identified

by a paper label which carried the wording, "Cambridge" by Imperial.

The other area of confusion that we will address is in regard to decorated Caprice.

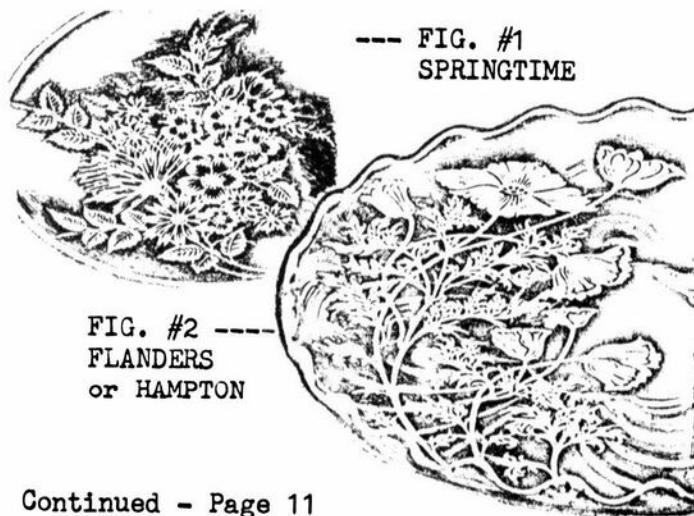
It is known that Cambridge did decorate some Caprice. We have seen #1338 3 Lite Candleholders with the Rosepoint etching. We have also seen some pieces of Caprice with a thin gold line around the rim. However, we have seen no evidence that Cambridge produced any of the silver and gold overlay items that we see fairly often.

We are of the belief that all of these items can be attributed to the Silver City Glass Co. of Meridan, Connecticut.

In a letter from this company dated in 1973, we find the following information, "items currently used by our firm have been copied from the "Caprice" pattern by other glass manufacturing firms, and are not products of the Imperial Glass Co."

"We did in past years, when Cambridge was in business, utilize a variety of the Cambridge blanks in our work. We did not at any time in recent years use anything but the crystal pieces. The items of Cambridge manufacture that were used were for our own purposes and were not done for the Cambridge Glass Company themselves. They were to us a supplier of raw material."

The catalog which was enclosed with the letter pictured four patterns on Caprice type blanks. These patterns were Flanders, Lace, and Springtime in Sterling Silver, and the same floral arrangement that was used for Flanders was called Hampton when overlaid with 22k Gold. (See figures 1 and 2)



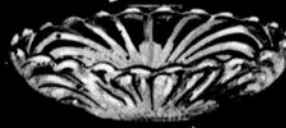
Continued - Page 11



Caprice



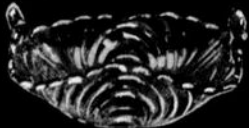
144—4 in. 2 Hld. Jelly



18—5 in. Fruit



146—4 in. 2 Hld. Basket, Square



147—4 in. 2 Hld. Bonbon, Square



19—5 in. Fruit, Crimped



148—4½ in. 2 Hld. Bonbon, Oval



151—5 in. 2 Hld. Jelly



145—5 in. 2 Hld. Lemon Plate



153—5 in. 2 Hld. Basket, Square



154—6 in. 2 Hld. Bonbon, Square



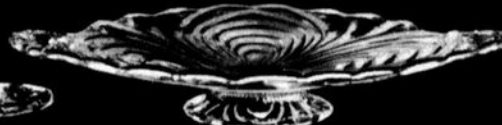
152—6 in. 2 Hld. Lemon Plate



155—6 in. 2 Hld. Bonbon, Oval



130—7 in. L. F. Comport



131—8 in. L. F. Plate



132—6 in. L. F. Bonbon, Oval



133—6 in. L. F. Bonbon, Square



134—7 in. L. F. Basket



135—7 in. L. F. Jelly, Crimped

Patent numbers 98794, 98825, 98993, 99448.



Caprice

Patent numbers 98794, 98825, 98993, 99440



254—6 in. Vase (Blown)



232—5 in. Ivy Bowl



253—4½ in. Vase (Blown)



249—3½ in. Vase (Blown)



251—4 in. Vase (Blown)



252—4½ in. Vase (Blown)



256—4 in. Bubble Ball



250—3½ in. Vase (Blown)



343—8½ in. Vase



342—6 in. Vase



341—4½ in. Vase



236—8 in. Rose Bowl, 4 Ftd.

also
236/1502—8 in. Rose Bowl w/Flower Block

also
1502—4½ in. Flower Block



344—4½ in. Vase



345—5½ in. Vase



346—7½ in. Vase



235/1502—6 in. Rose Bowl w/Flower Block

also
235—6 in. Rose Bowl only, 4 Ftd.

also
1502—4 in. Flower Block



340—9½ in. Vase



339—8½ in. Vase



338—6½ in. Vase



337—4½ in. Vase

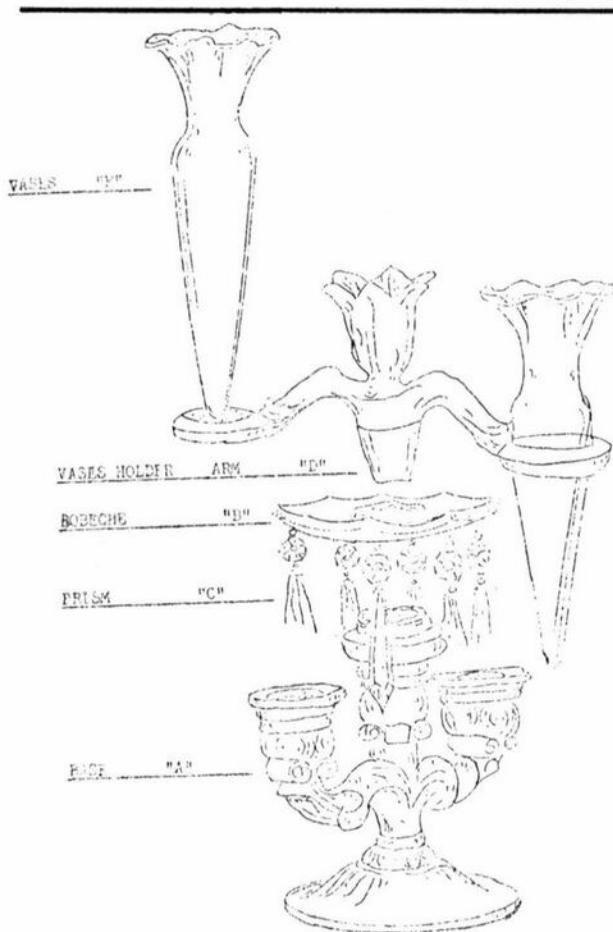
JANUARY 1, 1940

Due to poor copy quality we were unable to reproduce the Lace pattern. Our hopes are that this will suffice to give you an idea of the style of decorations that this company produces. We feel sure that over the years that there must have been many more patterns used by this company.

So ends our present portion of the Caprice story. It has been very interesting and a lot of fun getting this series together. We are hopeful that you Caprice collectors have been able to find the answers to many of your questions. We also hope that we have not bored those of you with other collecting interests. Perhaps someday even you might become interested in collecting this beautiful pattern.

We would appreciate hearing from any of you that would have additional information or questions regarding this pattern.

Collect CAPRICE



The above sketch was found packed with the pictured candelabra when purchased from the Lazarus Department Store of Columbus, Ohio in 1940.

QUARTERLY MEETING

continued from page 3

The location may be changed to the Columbus, Ohio area and the date will be sometime the first part of August. However he is accepting consignments, so please contact him if you have further questions, or glass to be consigned or donated.

The Nominating committee placed the following names in nomination to the Board of Directors: Josephine Barstow, Arnold Lynd and Doris Isaacs. The Board members whose terms end in 1977 are: John Wolfe, Doris Isaacs and David Hardesty. No additional nominations were made from the floor.

The "Show and Tell" table held several goodies such as a Tahoe Blue bunny box, a NearCut Lotus compote, an assortment of five different Yardley jars made by Cambridge, and an iced tea with #731 etching - the bowl and stem were pink and the foot was light blue.

For comparison there was a Rosepoint plate by Cambridge and one with the Imperial Co. sticker on it. The Imperial re-issue etching was shallow and thin compared to the full, deep Cambridge etching.

After the meeting and program, coffee and homemade cookies made it pleasant to munch while browsing and exchanging ideas. If you are not attending the Quarterly meetings, you are missing out on a lot of valuable information. If you are attending, please heed the Program committee's request to let them know what you would like to see and hear about.

— See you at the Convention!

Attach prisms "C" 8 of them to Bobeche "B"

Place Bobeche on top of Base "A" and turn part way around to lock it in place

Place Vase Holder Arm "D" on top of Bobeche, inserting the peg in the opening in the Bobeche

Place the 2 Vases "E" in the Vase Holder Arm, one in each end.

Club News

Continued from Page 2

PUBLICITY: Chairman Jack Rettig reported that continued advertising in major publications has paid off. It has been responsible for 9 new members, 9 book sales and 9 information request letters.

STUDY GROUP ADVISORY: No report.

MUSEUM: Chairman Larry Hughes reported Collector Books of Paducah, Ky., sold 1,032 books last quarter for a total of 2,086. N.C.C. sold 55 of the 1930-34 Reprint and 14 others. Mrs. Jo Barstow has donated an Arcadia stem and a blank stem to the Museum Fund.

BUDGET AND FINANCE: President Smith reported the budget set for the first of the year is holding. Also, the new publisher of the CRYSTAL BALL is a lower cost than previous.

PROGRAM: No report.

SPECIAL COMMITTEES

ANTIQUÉ SHOW: Chairman Evelyn Allen reported she had mailed 29 contracts for the show. March 15 is the deadline. The hours will remain the same as last year, 6 PM to 9 PM Friday, and 12 noon to 6 PM Saturday and Sunday.

AUCTION: Chairman Lynn Welker reported he has received numerous phone calls regarding the auction. He advised of the possibility of having the auction in the Columbus area this year. He stated that he would have additional information for the April issue of the CRYSTAL BALL.

NOMINATING COMMITTEE: A report will be made under New Business.

OLD BUSINESS: None.

NEW BUSINESS: Janice Hughes reported the Nominating committee consisted of Shirley Patterson, George Hoffman, Wilbur Henderson and President Smith. They met on January 9, 1977, in the home of Shirley Patterson, Cambridge, Ohio. Mr. Henderson was absent. Nominated were Doris Isaacs, Cambridge, Ohio, Josephine Barstow, Cambridge, Ohio, and Arnold Lynd, Pataskala, Ohio. The Board members whose terms end in 1977 are, John Wolfe, Doris Isaacs and David Hardesty.

President Smith asked for any nominations from the floor. There were none. A motion was made by David Rankin to close the nominations. Motion carried.

President Smith announced the appointment of George Hoffman of Newark, Ohio to fill the unexpired term of Robert Coyle on the Board of Directors.

Program chairman Doris Isaacs introduced Lynn Welker and John Wolfe. They gave a program on "Etchings". There were 78 different etchings on display.

A motion was made by David Rankin to adjourn at 3 PM.

Refreshments were made and served by Lena Barnes, Doris Isaacs and Shirley Patterson.

Janice Hughes
Secretary

P.S. A fine of 25¢ was collected from Frank Wollenhaupt.

STUDY Club News

CAMBRIDGE SQUARES

The Cambridge Squares Study Group met at John Wolfe's on Friday evening, March 4, 1977. There were thirteen members and two guests present.

The program was on Cuttings and although we could not identify them all by name, we had a full table of lovely pieces. Some identified were - Flight, Tropical Rogue, Bijou, Flame, Starburst, Granada, Laurel Wreath, Ambassador, Star, Adonis, Montrose, Rondo, Radiant Rose, Maryland, Ivy, Talisman Rose, Silver Maple, Lucia, Celestial, Achilles, Lynbrook and Harvest.

"Show and Tell" items included: a hollow stemware Cambridge piece that Mr. Wagstaff had cut in the Harvest pattern for John Wolfe; a black nude stem that had been glued to a crystal Harvest cut bowl; a carmen Mt. Vernon salt shaker, a red pressed open salt; a NearCut Snowflake celery vase; a light blue flower block; and a 2 oz. gold krystal Apple Blossom tumbler.

Lena Barnes won the game and received a handled Granada plate. Next meeting will be at Jo Barstow's on Friday, April 15, 1977.

Submitted by Doris Isaacs

HOKEY-POKEYS

Hokey-Pokey Study Club met Friday evening, March 4, 1977. Their report will be in next month's CRYSTAL BALL.

10th ANNUAL

CAMBRIDGE, OHIO

**Antique
Show and Sale**

MAY 7

10:00 A.M. - 9:00 P.M.

MAY 8

NOON - 6:00 P.M.

NATIONAL GUARD ARMORY

N. 10th ST. - McFARLAND DR.

35 QUALITY DEALERS

**FOOD BY SILVER COURT OF THE
AMARANTH**

CHARLES UPTON - MANAGER

Great Lakes Depression Glass Club

ANNOUNCES ITS THIRD

All Depression Era Glass Show & Sale

Including - Cambridge, Fostoria, Duncan, Heisey, Aladdin, Etc.

SATURDAY, MAY 7, 1977
10:00 A.M. - 5:00 P.M.

SUNDAY, MAY 8, 1977
12 NOON - 5:00 P.M.

SPECIAL EVENT

Nora And The Daze Days

(National Cambridge Collectors are extended a special invitation to attend our "Sneak Preview Show and Sale", on Friday evening, May 6th, and our special "Tribute to Nora Koch" dinner, on Saturday evening, May 7th. Please send SASE to: Norene Blackwell, 580 So. Blvd. E., Troy, Michigan 48098, for special price and further information. Hurry! Our seating capacity is limited!)

OAKLAND UNIVERSITY - ROCHESTER, MICHIGAN

I-75 - UNIVERSITY DRIVE EXIT

Donation \$1.00

CAMBRIDGE '77 **2nd ANNUAL**

National Cambridge Collectors **Antique Show & Sale**

June 24, 25, 26, 1977

*Guernsey Catholic Central High School
Rt 209 South
Cambridge, Ohio*

Show Chairman

Evelyn Allen 135 Cynthia St. Heath, Ohio 43055 (614)522-1635

BOOKS FOR SALE

National Cambridge Collectors, Inc. is proud to announce that you can now order all of the available reference books on Cambridge glass directly from the Club.

Ohio residents add 4½% sales tax -- and send with your order to:

BOOKS
National Cambridge Collectors, Inc.
P. O. Box #416
Cambridge, Ohio 43725

1930-1934 CAMBRIDGE GLASS CO.
CATALOG REPRINT
by National Cambridge Collectors
(250 page reprint of
original catalog)
Hardbound with Price Guide - \$14.95

THE CAMBRIDGE GLASS BOOK
by Harold and Judy Bennett
(96 pages with 59 color plates)
----- \$ 9.95

1975 PRICE GUIDE TO
THE CAMBRIDGE GLASS BOOK
by Charles and Mary Alice Upton
(Prices for each item in
Bennett Book) - - - - \$ 1.75

CAMBRIDGE GLASS COMPANY
by Mary, Lyle and Lynn Welker
(120 pages of reprints from
eight old catalogs) - - \$ 6.95

CAMBRIDGE GLASS CO. BOOK II
by Mary, Lyle and Lynn Welker
(119 pages of reprints from
old catalogs) - - - - \$ 6.95

CAMBRIDGE, OHIO GLASS IN COLOR II
by Mary, Lyle and Lynn Welker
(15 color plates with descriptions
and notes) - - - - - \$ 5.95

1903 CAMBRIDGE GLASS COMPANY
CATALOG REPRINT
by Harold and Judy Bennett
(106 page reprint of
original catalog) - - - \$ 7.50

JOHN J. TERHART
8933 Glendale Drive
Birmingham, Alabama 35206
Phone: 205-833-1839

- #70 Caprice crystal 7" candle-
holders with prisms - pair ----- \$ 20.00
- #569 Pristine carmen, crimped
vase (few base chips) ----- 25.00
- Crown Tuscan #3500/57 three compart-
ment covered candy ----- 55.00
- Crown Tuscan 8" swan ----- 115.00
- Crown Tuscan #1301, 10" footed vase
with gold encrusted Rosepoint and
gold edges ----- 60.00
- #3400 Salt with Chantilly etching
and sterling silver top (clouded) ---- 5.00
- #3400 three piece mayonnaise set
with Rosepoint etching, gold
borders (ladle is plain) ----- 27.00
- #34 Gold Krystal 3", 3-toed nuts
or ashtrays. 12 @ \$2.50 each or
all for ----- 25.00
- Tally-Ho two-part relish with
Rosepoint etching. Minor chip
near base ----- 7.00

ALL ITEMS MINT UNLESS NOTED!!
----- POSTAGE AND INSURANCE EXTRA!!

Classified

FOR SALE: MAIL BID AUCTION! Seven #3011 (nude stem)
3 oz. cocktails. Colors include: light green, pink,
amber, moonlight blue, ritz blue, dark amethyst and
dark green. Please state color(s) desired and send
SASE for check return if bid is rejected. BID DEAD-
LINE - April 23, 1977. Postage and insurance extra.
Mrs. James W. Smith, 116 Kennisor Drive, Orlando,
Florida 32801.

WANTED: CAMBRIDGE CLEO etched pieces in green. In-
terested in any and all pieces. Martha Cook, Box
205, Kewanna, Indiana 46939.

The Sunday school class was composed of
three-year olds. The teacher asked: "Do
any of you remember who St. Matthew was?"
No answer.

"Well, who was St. Mark?" Still no an-
swer.

"Surely someone must remember who Peter
was?"

The little faces were full of interest,
but the room was quiet. Finally, a tiny
voice came from the back of the room.

"I fink he was a wabbit."

HAPPY EASTER TO YOU ALL!

DEALERS



DIRECTORY

<p>ANTIQUE ALLEY 24815 Broadway Bedford, Ohio 44146 216-232-7739 ---- Marie Spagnola CAMBRIDGE GLASS ROYAL DOULTON</p>	<p>BENICIA ANTIQUE SHOP 305 First Street Benicia, California 94510 OPEN 11 AM - 5 PM Closed Monday</p>	<p>BARBARA COOPER'S DEPRESSION SHOP 97 Weaver Street Montgomery, N. Y. 12549 CAMBRIDGE, HEISEY, DUNCAN MILLER and DEPRESSION ---- 914-457-3659</p>
<p>BLACK ROOSTER ANTIQUES 1018 Clark Street Cambridge, Ohio 43725 614-439-2549 ----- M. Sipe CAMBRIDGE GLASS - GENERAL LINE</p>	<p>Z. E. LOPES - 707-745-0978 VISIT HISTORIC BENICIA and its 28 shops Off Interstate #80 ----- ---- North of San Francisco</p>	<p>FINDER'S KEEPER'S ANTIQUES P.O. Box 303 P.O. Box 16023 Dayton, O. Columbus, O. 45401 43216 513-254-2937 614-965-1906 SPECIALIZING IN CAMBRIDGE GLASS!</p>
<p>D'MARIE'S ANTIQUES Rt. #1, c/o Eastern Antique Mart Thornburg, Virginia 22565 703-582-5755 ----- Jim Rankin OPEN DAILY - EXCEPT MONDAY</p>	<p>THE DARROW COLLECTION Highway 11A and Jungle Hut Road Flagler Beach, Florida 32036 Phone 904-445-3805 Mail Address: Rt. #1, Box 167 St. Augustine, Florida 32084</p>	<p>GEORGE HOFFMAN ANTIQUES 129 South 4th Street Newark, Ohio 43055 --- 614-345-8550 ---</p>
<p>MARY & WILBUR HENDERSON 303 Guilford Avenue Woodsfield, Ohio 43793 SHOWS Only -- 614-472-1133 SPECIALIZING IN CAMBRIDGE GLASS!</p>	<p>HERITAGE ANTIQUES Rt. #5, Cambridge, Ohio - 43725 614-439-3241 TAKE N.8th St. Rd. (County Rd. #33) TURN LEFT AT RAILROAD TRACK.</p>	<p>OUR GLASS ANTIQUES 20th CENTURY COLLECTIBLES featuring CAMBRIDGE GLASS Paul & Ginny Henderson - Box 134 Iselin, NJ 08830 -- 201-283-3181</p>
<p>HOBBY HOUSE ANTIQUES Rt. #1, Cambridge, Ohio - 43725 614-432-6971 - Frank & Lena TAKE RT. #209 W. FROM CAMBRIDGE TO RT. #658 - NORTH 1 1/2 MILES.</p>	<p>YOU CAN ADVERTISE YOUR ANTIQUe SHOP HERE! 1 inch - \$6 for six months</p>	<p>MARGARET LANE ANTIQUES 2 E. Main Street New Concord, Ohio 43762 Lynn Welker ----- 614-826-4418 CAMBRIDGE GLASS MATCHING SERVICE</p>
<p>S & J ANTIQUES 5616 Hensel Woods Road Gahanna, Ohio 43230 Sue & Jack Rettig - 614-855-1711 CAMBRIDGE GLASS OUR SPECIALITY</p>	<p>A. SPRINGBORN P. O. Box E. G. #962 Melbourne, Florida - 32935 Shop #34, Webster, Florida OPEN EVERY MONDAY 305-254-7439</p>	<p>OLD TOLL GATE ANTIQUES Rt. #5, Box 7X Milan, Illinois 61264 SPECIALIZING IN HAVILAND CHINA</p>
<p>WOLFES GLASS EMPORIUM 330 Woodlawn Avenue Cambridge, Ohio 43725 John Wolfe ----- 614-432-2590 WED. & FRI. 1-5PM or APPOINTMENT</p>	<p>NATIONAL CAMBRIDGE COLLECTORS, INC. P. O. Box #416 Cambridge, Ohio - 43725</p>	
<p>PRESIDENTIAL COIN & ANTIQUE CO 6222 Little River Turnpike Alexandria, Virginia - 22312 Gail B. Levine ---- 703-354-5454 WANT LISTS SOLICITED-OPEN 6 DAYS</p>	<p style="text-align: center;">FIRST CLASS MAIL</p>	
<p>WILMA SAXTON, INC. One E. Kings Highway Audubon, N.J. 08106 - 609-546-0559 Open 10AM-5:30PM - Closed Sunday CAMBRIDGE, HEISEY, ROYAL DOULTON</p>		
<p>HOFF - HAVEN ANTIQUES 21 Half Moon Lane Tarrytown, New York 10591 Shows-Mail-No Lists-914-631-2140 CAMBRIDGE, Rose In Snow Fostoria</p>		