

Cambridge



Crystal Ball

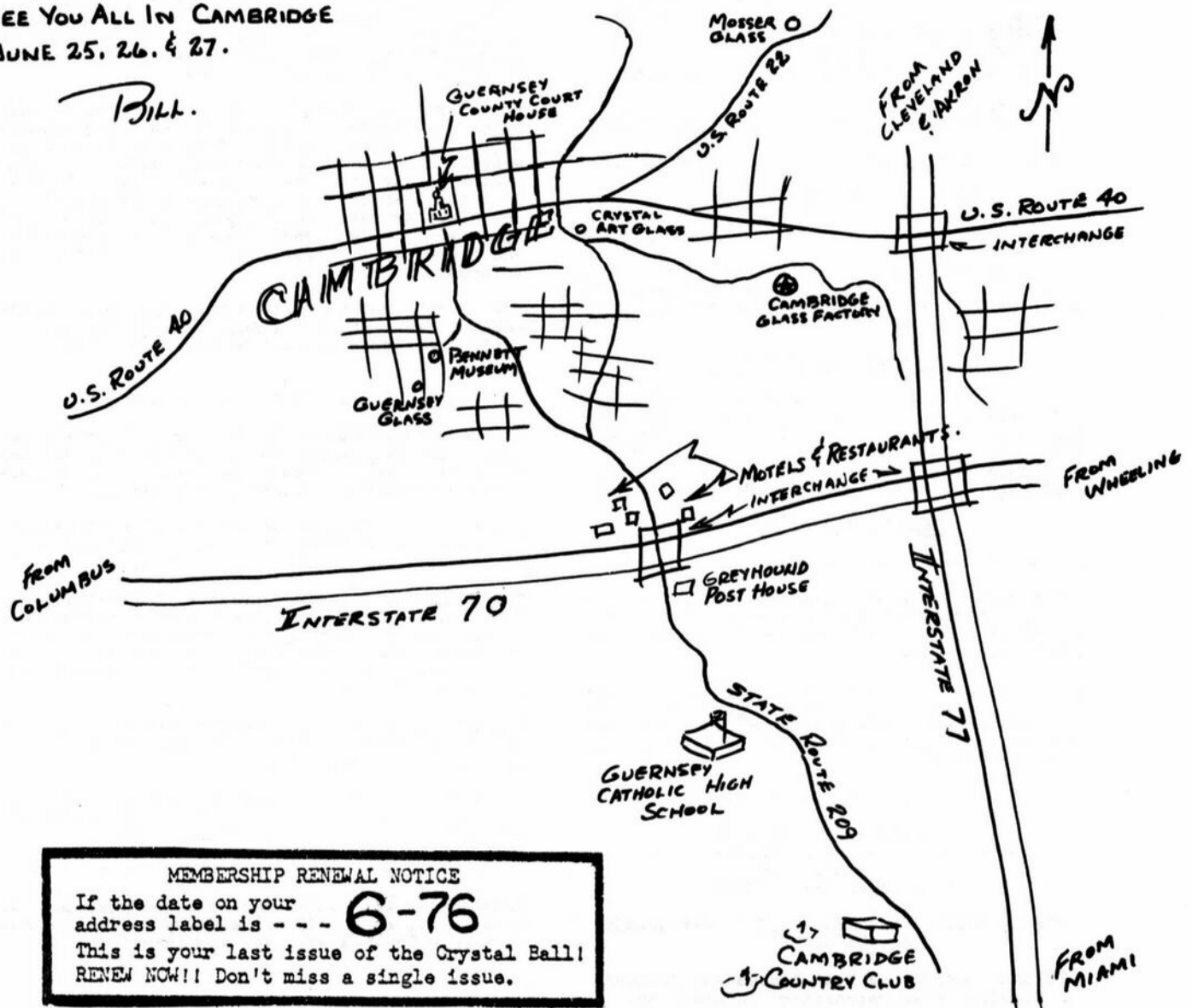
ISSUE NO. 38

JUNE 1976

Published monthly by the NATIONAL CAMBRIDGE COLLECTORS, Inc.
To encourage and to report the discovery of the elegant and boundless product
of the Cambridge Glass Company, Cambridge, Ohio

SEE YOU ALL IN CAMBRIDGE
JUNE 25, 26, & 27.

Bill.



MEMBERSHIP RENEWAL NOTICE
If the date on your address label is - - - **6-76**
This is your last issue of the Crystal Ball!
RENEW NOW!! Don't miss a single issue.

CAMBRIDGE CRYSTAL BALL

P. O. Box #416
Cambridge, Ohio 43725

STUDY Club News

- - - H O K E Y -- P O K E Y S - - -

Official publication of National Cambridge Collectors, Inc., a non-profit Corporation with tax exempt status. Published once a month for the benefit of its members. Membership is available for individual members at \$10 per year and additional members (12 years of age and residing in the same household) at \$3 ea. All members have voting rights, but only one CRYSTAL BALL will be mailed per household.

The Hokey-Pokeys Study Club held their regular meeting April 11th, in the home of Dave and Joy McFadden, Galena, Ohio. There were eight members present.

Back issues of the CRYSTAL BALL are available to members only, at a cost of 60¢ each or 12 issues for \$7.

Discussion for the meeting centered on the year 1927 and what was happening with the Cambridge Glass Company at that time.

1975-76 Officers & Committee Chairpersons

PRESIDENT ----- William C. Smith
VICE-PRESIDENT ----- Charles Upton
SECRETARY ----- Janice Hughes
TREASURER ----- David G. McFadden

An interesting item appeared in the June 20, 1927, issue of China, Glass and Lamps. It read as follows: "Individual breakfast sets of amber, green and peach, each equipped with an 18 inch glass tray to match are new and selling well at the Cambridge Glass Co., 184 Fifth Avenue. The 18 inch tray is of a size and shape that makes it available as a platter also, which is a point to remember in selling the set to a thrifty housewife. The glass tray is fitted with the regulation cereal and plate, sugar and cream, egg cup and cup and saucer. It certainly would start the day right to have breakfast appear at the bedside on one of these peach colored services." Unfortunately there was not an accompanying picture -- so your guess is as good as ours as to just what this set looked like -- but we all decided that we want one!

BUDGET & FINANCE ----- William C. Smith
BY-LAWS ----- David G. McFadden
CONVENTION ----- William C. Smith
MEMBERSHIP ----- David Hardesty
MUSEUM ----- Edward Ruby
PROGRAM & ENTERTAINMENT ----- Evelyn Allen
PUBLICITY ----- Frank Wollenhaupt
STUDY GROUP ADVISORY ----- David B. Rankin

1976 ANTIQUE SHOW ----- Evelyn Allen
1976 CAMBRIDGE AUCTION ----- Lynn Welker

Our "Bring and Brag" session included several items that appear in Bennett's new "1903 Catalog Reprint". There was a #2577, 12" celery tray; a #2502 cracker jar bottom and a #2610 celery or spooner that had been on the Smith's "wonder what it is shelf", just waiting to be identified. The Rankin's had been lucky enough to find a #112 Opal (early Milk Glass) 7" plate at a Flea Market and a beautiful Royal Blue oysters bottle in a Farberware holder.

CRYSTAL BALL Editor ----- Phyllis D. Smith

Our next meeting will be held May 16th, in the home of Frank and Vicki Wollenhaupt, Dayton, O. Topic of discussion will be the year 1932.

CLASSIFIED ADVERTISING RATES

5¢ per word \$1.00 minimum

We cannot mix type size in classified advertisements. Abbreviations and initials will count as words. Payment in full must accompany all ads.

DISPLAY ADVERTISING RATES

	Members	Non-Members
1/8 page -----	\$ 4.00	\$ 6.00
1/4 page -----	7.00	10.00
1/2 page -----	12.00	18.00
3/4 page -----	17.00	25.00
Full page -----	22.00	33.00

- - C A M B R I D G E S Q U A R E S - -

DEALERS DIRECTORY

1" ad ----- \$6.00 for 6 months

Cambridge CRYSTAL BALL assumes no responsibility for items advertised and will not be responsible for errors in price, description, or other information.

The Cambridge Squares Study Club held their regular meeting April 16th, in the home of Roy and Doris Isaacs, Cambridge, Ohio. There were sixteen members and three guests present.

The topic for discussion was "NearCut Patterns". There were over fifty items on display and each member reported on what he or she brought.

Advertising copy must be in our hands by the 15th of each month to assure publication in our next issue. Advertisements containing reproductions will not knowingly be accepted unless clearly stated.

"Show and Tell" items consisted of a 6 1/2" Mandarin Gold swan, a Moonlight Blue figure flower holder, a flip bowl & matching candlesticks etched Cleo, an Amber and Crystal cordial, a nude cocktail with black foot and bowl, and a piece of Cambridge Art Pottery.

Please address all correspondence to:

Cambridge CRYSTAL BALL
National Cambridge Collectors, Inc.
P. O. Box #416
Cambridge, Ohio 43725

Shirley Patterson and Janice Hughes won the prizes consisting of a Mt. Vernon cordial and a Willow Blue Decagon plate.

PLEASE NOTIFY US IMMEDIATELY OF ANY CHANGE IN YOUR ADDRESS!

Refreshments were served by the hostess. The next meeting will be held at the home of Charles and Mary Alice Upton, Cambridge, Ohio.

PLEASE enclose a Self-Addressed, Stamped Envelope when requesting information.

REMEMBER -- All roads lead to Cambridge, Ohio -- on June 25, 26 and 27. The Hokey-Pokeys and the Cambridge Squares will see you there!!

Flower Holders

by Bill Smith

The Flower Holder that we present this month is another that we cannot positively identify as being of Cambridge manufacture. It might be said that this one is a definite maybe.

The relatively few people that are acquainted with this figure refer to it as "The Mandolin Lady". This seems to be an appropriate name due to the shape of the instrument she appears to be playing.

There are several reasons why this figure is believed to be Cambridge glass. We will mention a few of these for your consideration and study.

It is a statue-like form surmounting a base having holes for holding flowers as stated in Mr. Bennett's patent application.

The base is the same style (#2) and size as others of Cambridge production.

We have heard of only four of these figures to date, two crystal and two light green. The green appears to be identical to early Emerald. One crystal and one green figure has been given a frosted finish.

This lady appears to be wearing a swim suit when viewed from the front. In the back this garment reaches to the base at the right foot.

We extend our thanks to Mr. Paul Roberts for the sketch we have used in this article.



Mandolin Player

COLLECT CAMBRIDGE

NOTICE! NOTICE! NOTICE!

Due to printing delays, we will be unable to ship Welker's "CAMBRIDGE GLASS CO" immediately.

These will be mailed just as soon as copies arrive.

BOOKS FOR SALE

National Cambridge Collectors, Inc. is proud to announce that you can now order all of the available reference books on Cambridge glass directly from the Club.

Address your orders for any of the following to:
BOOKS

National Cambridge Collectors, Inc.
P. O. Box 416
Cambridge, Ohio 43725

"THE CAMBRIDGE GLASS BOOK"
by Harold and Judy Bennett
(96 pgs. with 59 color plates)
Paperback \$8.95 Hardbound \$9.95

"1975 PRICE GUIDE TO THE CAMBRIDGE GLASS BOOK"
by Charles and Mary Alice Upton
(Prices for each item in Bennett book) \$1.75

"CAMBRIDGE, OHIO GLASS in COLOR"
by Mary Lyle and Lynn Welker
(15 color plates w/ description and notes) \$5.95

"CAMBRIDGE GLASS CO."
by Mary, Lyle and Lynn Welker
(120 pgs. of reprints from 8 old catalogs) \$6.95

"CAMBRIDGE, OHIO GLASS in COLOR II"
by Mary, Lyle and Lynn Welker
(15 color plates w/ description and notes) \$5.95

"CAMBRIDGE GLASS CO. BOOK II"
by Mary, Lyle and Lynn Welker
(119 pgs. of reprints from old catalogs) \$6.95

"1903 CAMBRIDGE GLASS CO. CATALOG REPRINT"
by Harold and Judy Bennett
(106 page reprint of original catalog) \$7.50

For release on June 25, 1976 (Hopefully)
"1930 - 1934 CAMBRIDGE GLASS CO. CATALOG REPRINT"
by National Cambridge Collectors, Inc.
(250 page reprint of original catalog)
Hardbound with Price Guide \$12.95

OHIO RESIDENTS ADD 4 1/2% SALES TAX

Stems

CAPRICE

by Frank and Vicki Wollenhaupt

This months column must first state a correction to last months column. The #3300 stem has now been seen in Willow Blue, (light Moonlight Blue color) plus an unsigned piece.

This months stem article is going to be presented a little differently. The Caprice line, one that many of us collect, has many different stems making the complete line. Some of the stems are made just for Caprice and others are just being borrowed. The Caprice line was introduced in 1936 and was still being produced until the close of the factory.

There were two stems made just for the Caprice line and both were a heavy stem.

The first and possibly the original stem has no line number that can be ascertained at the present time. The stem was patented by A. J. Bennett, March 3, 1936. (figure #1) The Caprice design is carried through from the bowl to the stem and foot.

The items found in this stem are: 10 oz. goblet, 7 oz. tall sherbet, 5 oz. low sherbet, 3 oz. wine, 3½ oz. cocktail, 4½ oz. seafood or fruit cocktail, 4½ oz. Claret, and 12, 10, 5, and 3oz.ftd. tumblers.

The second heavy stem is the #200 line of Caprice. (figure #2) This stem was brought out in the 1940-50 era. We have seen only six items in this line. The stem is an exaggerated Caprice pattern. The edges of the design are sharp and the pattern is more pointed.

The stemmed pieces are: goblet, tall sherbet, cocktail, wine, 5 oz. ftd. tumbler, and footed ice tea. To date, this stem has only been seen in Crystal and Moonlight Blue.



FIGURE #2

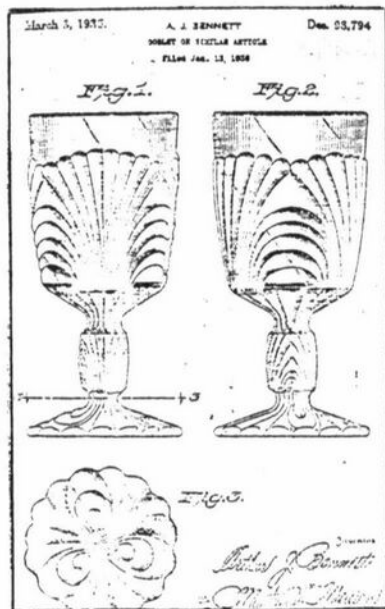


FIGURE #1

The thin Caprice stems fall into two classes, those on a #3790 (Simplicity) stem and those on a #3130 stem.

The #300 line Caprice is on the #3130 stem. (figure #3) Exactly when it was introduced is not known at present, but a piece of the thin stemware is shown in an ad in the September, 1938 issue of "China, Glass and Lamps".

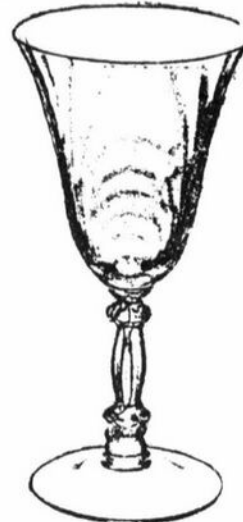


FIGURE #3

The items made in the #300 line are: 9 oz. goblet, 6 oz. tall sherbet, 5 oz. parfait, 3 oz. cocktail, 4½ oz. claret, 6 oz. low sherbet, 4½ oz. cocktail, 2½ oz. wine, and 1 oz. cordial. This #300 line Caprice stemware has been seen in Moonlight Blue, LaRosa and Crystal.

The fourth and final Caprice stem is the #301 line on a #3790 (Simplicity) stem. (figure #4) This stem is not the most ornate of the Caprice stems but is the most difficult to find. The items made in the #301 line are: goblet, sherbet, cocktail, claret, cordial, wine, low cocktail, juice, and ice tea.

From the information available at the present time, it can be assumed that the #301 stemware was introduced in 1950.

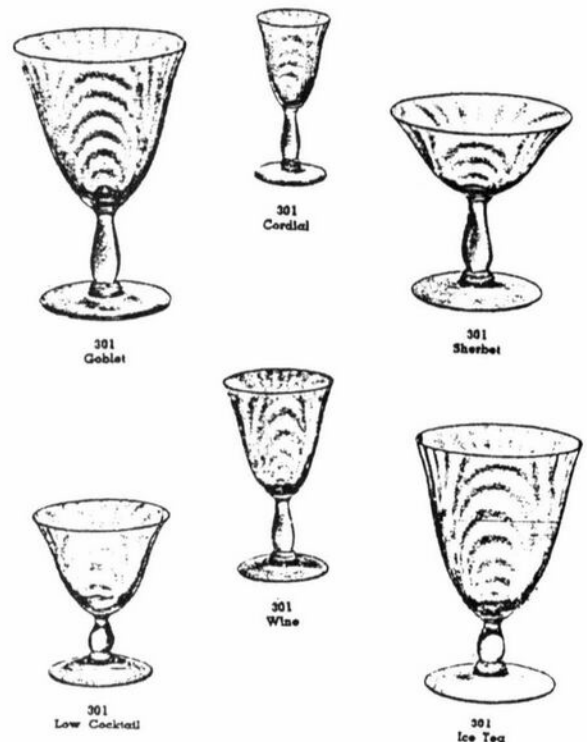
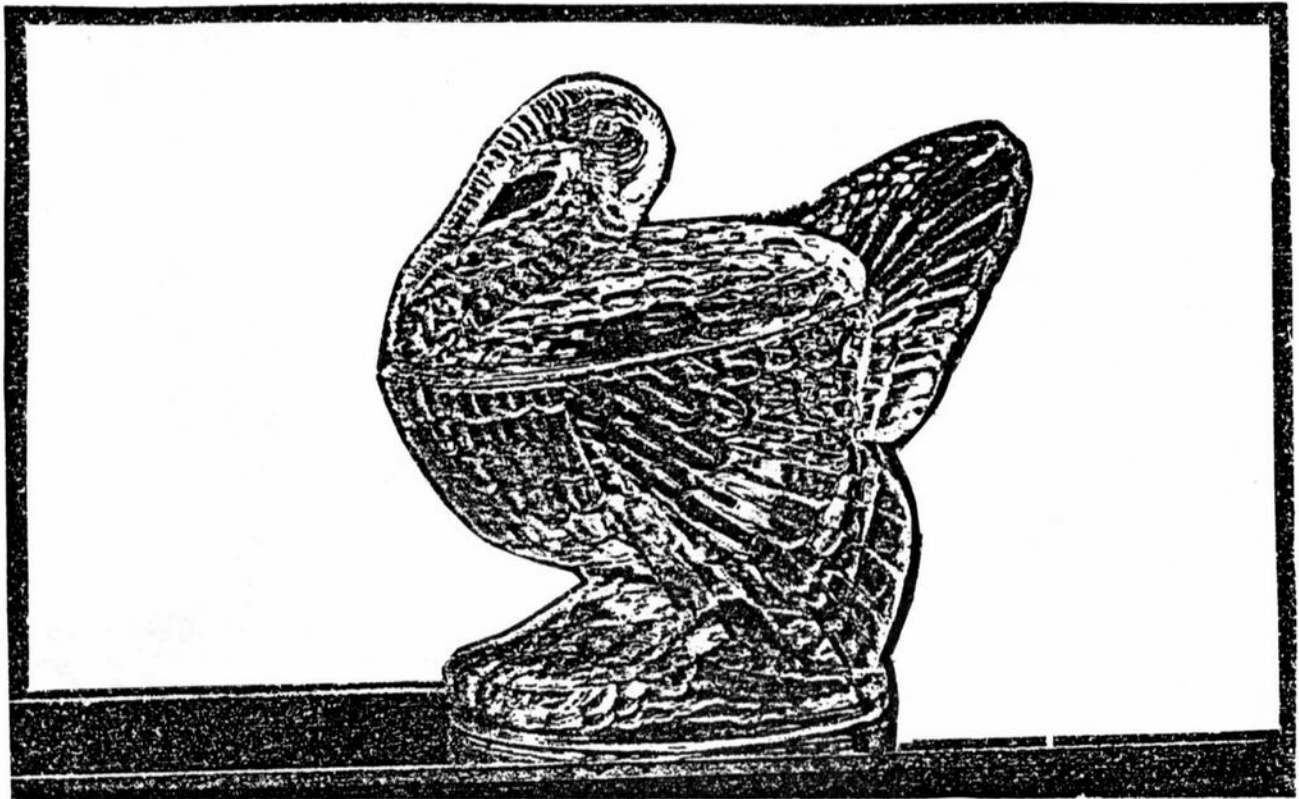


FIGURE #4

To date this stemware has been seen in Crystal only. It could be assumed that it was probably available also in Moonlight Blue.

TOUCH OF HISTORY Jack and Sue Rettig

This article from the December, 1930 China, Glass & Lamps publication shows the oft disputed and controversial turkey. First of all it should be noted that Cambridge made the turkey in only one size, it measures approximately 8½ inches from the base to the top of the head and also from the breast to the tip of the tail. Another important factor is the underside of the base. The Cambridge turkey is uneven and wavy almost to the point of having feather detail. The non-Cambridge turkey has crosshatched or a waffle pattern. For further detail, we suggest you refer to the excellent article including pictures by Charles Upton in the February 1974 issue (# 10) of the Crystal Ball.



A Supreme Novelty

Symbolic of the many live, quick-selling novelty glassware items to be found in CAMBRIDGE displays is the life like semblance of this Turkey—a striking container for candy, nuts and sweetmeats.

Finely executed, this Turkey container is a wonderful novelty for Holiday selling. We are prepared to make immediate shipment. Can be had in Gold Krystol, Peach-blo, Emerald, Amber, Willow-blue and Crystal. It is item No. 1222.

NEARCUT Patterns

NO. 2699. BUZZ SAW PATTERN

by Phyllis Smith

The various items shown here should be new to most of you. These were taken from a page in NearCut catalog No. 10 - of uncertain date. Buzz Saw is one of the more beautiful but very difficult to find patterns.

Several companies made similar patterns, so unless it is marked, be sure to study the pattern closely before buying. Like all NearCut patterns - some pieces are marked and others are not.

Buzz Saw was made in a wide variety of pieces, but not many of them seem to be showing up. We wonder what happened to all of them.

----- To those of you who have been fortunate enough to find a NearCut Jelly Jar --- don't forget to bring it with you (filled or not) to the Display Room at the Convention. ---



No. 65
9 inch Bowl
Square



No. 217
Cut. Jug, Glass



No. 424
15 inch Vase, Two Piece



"Nearcut"



No. 318
13 inch Punch Bowl and Foot



No. 309
12 inch Orange Bowl and Foot



No. 135
Epergne, Three Piece



No. 165
13 inch Fruit Bowl

notes from your EDITOR!

I want to give a very special THANK YOU to some very special people this month. They are Dave and Sue Rankin, Frank and Vicki Wollenhaupt and of course, my own special helpmate, Bill Smith.

Without these five people, I sometimes wonder if we would have a CRYSTAL BALL at all. Besides writing articles most months, they are the folks who have seen to it that the CRYSTAL BALL gets printed each month.

For the past four months we have all met at Dave Rankin's office in Dayton, Ohio (that's where the 9200 Xerox machine is located) one evening each month to do the printing.

Dave supervises the running of the machine and Frank takes the finished product out and hands it to me. Handy Bill built a stapling machine out of some scrap wood and two staplers so we have a production line of me straightening, Bill stapling, and Sue and Vicki folding for mailing-- and our son Mark puts them neatly into a box. It's quite an operation and we enjoy it -- but the inspiration that really keeps us going is the thought of all the money we are saving the Club by doing it this way!

I certainly appreciate all the effort these fine folks put into this operation and the many other things they do for the Club -- and I'm sure that you do too ----- Just thought you would want to know!!

Our Third Annual Convention will be here before you know it. Convention Chairman Bill Smith has ordered perfect weather for the affair ---- just hope the weatherman will make delivery!! Everything else is in the final planning stage and it looks as though we will have an enjoyable weekend. Do hope you are planning to be with us.

Don't forget, June 18th is the deadline for returning your Ballots and Advance Registration form. If you have not returned either of these, PLEASE do so as soon as possible.

Also, PLEASE be sure to bring some of your Cambridge glass, to share with everyone in our Display Room. If you members don't support this effort - we won't have a Display this year. You will find more information on this elsewhere in this issue.

Show Chairman Evelyn Allen says everything is set for the Grand Opening of our First Antique Show and Sale. All booths have been filled and there will be a wonderful array of Cambridge glass for your viewing and buying pleasure. Do hope you are planning to be there when the doors open at 6 PM Friday, June 25th.

In all the excitement about the Convention, we hope you're not forgetting the Auction coming up on August 21st. PLEASE get your list of consignments to Auction Chairman Lynn Welker before the Convention, if at all possible -- or be sure to bring the list and your glass to the Convention. The deadline for this is the last day of the Convention - June 27th. PLEASE do your part to make this annual event a success.

I'm looking forward to meeting YOU at the Convention. I will be at a table in the lobby of the High School, so please stop by and visit for awhile. See you there!!

THIRD ANNUAL CONVENTION National Cambridge Collectors, Inc.

CAMBRIDGE, OHIO

June 25, 26, 27, 1976

SCHEDULE OF EVENTS

FRIDAY, June 25th

- 3:00 PM - 5:30 PM - REGISTRATION
Guernsey Catholic Central
High School, S.R. 209 So.
Cambridge, Ohio
- 6:00 PM - 9:00 PM - CAMBRIDGE '76 Antique
Show & Sale PREVIEW
Guernsey Catholic Central
High School
- 9:30 PM - "GET ACQUAINTED" Party
Cambridge Country Club
S.R. 209 So., Cambridge, O.
Hosts: Bill & Phyllis Smith

SATURDAY, June 26th

- 8:00 AM - 10:30 AM - REGISTRATION
Cambridge Country Club
- 8:30 AM - 10:30 AM - Continental BREAKFAST
Cambridge Country Club
"SHOW AND TELL"
- 11:00 AM - 6:00 PM - CAMBRIDGE '76 Antique
Show and Sale
Catholic High School
- Visit Cambridge Glass
Display Room
Special Displays by
Study Clubs
Opportunity to "visit"
Cambridge, Ohio
- 6:45 PM - 7:30 PM - COCKTAIL HOUR (Pay Bar)
Cambridge Country Club
- 7:30 PM - N.C.C. Annual BANQUET
Cambridge Country Club
(Roast Prime Rib of Beef)
- Guest Speaker -
WILLIAM C. ORME
Chemist for Cambridge Glass
Co.; son of Wilbur Orme and
grandson of A. J. Bennett

SUNDAY, June 27th

- 9:00 AM - Buffet BREAKFAST
Cambridge Country Club
N.C.C. Annual Business
Meeting
- 12 Noon - 6:00 PM - CAMBRIDGE '76 Antique
Show and Sale
Catholic High School
- 6:00 PM - 7:00 PM - Members may pick up their
glass from Display Room
and Show Booth.

— PLEASE SUPPORT OUR ADVERTISERS —

Space Available In Club Booth

There is still space available for those of you who would like to offer your merchandise for sale in the Club Booth at our upcoming Antique Show.

Anything you might have in the way of antiques, quality glassware, primitives, etc., will be most welcome.

Remember, the limit is 15 items per each member and the commission charge is only 10%. You set your own prices - so you can't lose --- and you will be helping the Club.

Please send your list of merchandise to Janice Hughes, N.C.C. Secretary - But HURRY -- the deadline is June 15th!

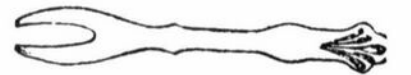
For further information see page 3 in last month's CRYSTAL BALL.

HELP NEEDED

Volunteer help is still needed in all areas for the Convention. We need people to serve as Hosts and Hostesses in our Display Room and to work in our Club Show Booth.

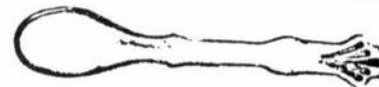
We are only asking for an hour or so of your time. Please write and let us know we can count on you.

KITCHEN GLASSWARE



Glass Fork

SHARPE
"Mercur"
MARK



Glass Spoon

12 June, 1932

CHINA, GLASS AND LAMPS

This Advertisement Caused a Stir

THAT the general public is not interested in the better grades of table glassware was refuted in a marked manner during May in Pittsburgh. The advertisement reproduced herewith was the cause of not a little excitement in the china and glass department at Kaufmann's. There was an error in the original advertisement which is underscored in the smaller facsimile. The mistake was in the

price quoted for dinner plates in the "Portia" tableware pattern. It will be noted that the price in the advertisement is "Dinner Plates, 2.25 Dozen." The price was in error as it should have been \$12.25.

The advertisement brought many telephone orders, not only for the dinner plates at the wrong price, but also for the other items. It also attracted many to the store where the wares was displayed on three tables near the elevators, one table for crystal, one for amber and one for topaz. When it was learned that the newspaper advertisement erred in the price on dinner plates, explanations were in order. The newspaper helped out by supplying large placards admitting its mistake and these were posted conspicuously near the ware on display.

Regardless of the confusion due to the price misquotation, we understand that Kaufmann's were well pleased with the demand for the "Portia" etched pattern. The ware came from the Cambridge Glass Co. and the "Portia" is among the leading acid-etched patterns on tableware and stemware made by that factory.



"Portia"—A New Service "Lace on Glass"

So exquisitely etched they might have been traced by a fairy's wand! Simply enchanting for gifts . . . and the price range goes all the way from 32nd-cousin to dearest friend-gifts. Crystal—amber—topaz.

Ice Pail	1.95	Cake Plate	1.95
Covered Butter		Console Bowl	2.50
Dish	1.89	Stemware, doz. 10.50	
Sugar & Cream	1.75	Mayonnaise Set, 2.50	
Cups, Saucers, do. \$15		Dinner Plates, 2.25 Dozen	

KAUFMANN'S SEVENTH FLOOR

MOTEL INFO

Since we are not using a Motel as Convention Headquarters this year, we are listing below, the area Motels, for your convenience.

We suggest you make your reservations as soon as possible, so you will be assured of a place to stay while attending the Convention and Antique Show.

- EL RANCHO MOTEL, (AAA), 1 mi. W. of Cambridge on US RTS. 40 & 22 (32 units) 614-432-2373
FAIRDALE MOTOR LODGE, (AAA), Exit #67 off IR-70, 2 mi. E. on Rt. 22 (20 units) 614-432-2304
HOLIDAY INN, Exit SR 209 off IR-70 614-432-7313
KNIGHTS INN, Exit SR 209 off IR-70 614-432-6391
RAMADA INN, Exit SR 209 off IR-70 614-432-5691
SPIRIT OF 76 INNS, Exit SR 209 off IR-70 - 614-439-3581
TRAVELODGE, Exit SR 209 off IR-70 614-432-7375

Rainbow Review GLASS journal

"KEEPING GLASS COLLECTORS INFORMED"

A SPECIAL OFFER FOR YOU!

An introductory three-month subscription to RAINBOW REVIEW GLASS JOURNAL for \$1.25 has been recommended for you by:

National Cambridge Collectors, Inc.

(Or send \$5 for one year [12 issues] and receive 3 extra months absolutely FREE!)

The RAINBOW REVIEW GLASS JOURNAL is dedicated to "keeping glass collectors informed" on every facet of the field - news stories, research, trademarks, respected columnists, reproductions, features, books available and reviews, a variety of ads (including a section for "new" glass), show calendar, club news, shop directory, questions & answers, interviews, mail and more! 48 pages printed magazine style on glossy paper with large, clear photographs.

- IF YOU COLLECT "ANY" GLASS YOU NEED THE RAINBOW REVIEW GLASS JOURNAL! -

Write your name, address, city, state and zip code on reverse side. Enclose payment and mail to: RAINBOW REVIEW, P.O. Box 2315, Costa Mesa, CA 92626.

REWARD

Information leading to the capture of six or more of these notoriously gorgeous goblets.



Jack and Sue Rettig
5616 Hensel Woods Rd.
Gahanna, Ohio 43230

Classified

WANTED: Cambridge, ELAINE etching on tall Stem, clear Crystal (ridges lengthwise in bowl). Need wines, liquors, sherbets. Mail photo or drawing to: Clara M. DeGross, 3916 Fairway Drive, Canfield, Ohio 44406.

DISPLAY ROOM

Our Display Room Chairman, Steve Horner requests that you send him a list of the items you will be bringing for display. Arrangements must be made for insurance and your description and value are needed by June 15th.

The Display will be insured and guarded around the clock, so bring your glass and share it with us.

- PLEASE SUPPORT OUR ADVERTISERS -

Tammy's Folly

SPECIALIZING IN GLASS

CAMBRIDGE DEPRESSION FOSTORIA McKEE

FOR SALE

- 1 - Pink Cleo Covered Bowl (Ref. Crys. Ball #35 pg.11) - - - \$38.00
- 1 - Green Everglade 11", 3 Ftd., Bowl (Welker #I pg.71) - - \$35.00
- 4 - #3121 Stem Oyster Cocktails, Etched Portia - - - - - \$10.00
- 1 - #3121 Stem 5 oz. Ftd. Juice, Etched Portia - - - - - \$12.00
- 1 - Goblet, Engraved Lynnbrook - - - - - \$10.00
- 2 - #300 Goblet, Caprice, Moonlight Blue - - - - - \$12.00

Prices each - Postage & Insurance Extra, S.A.S.E. - Send wants, no list

WANTED

Stemware - Stradivari (Regency) Etched Portia Ref. C.B. #35 page 6.

TAMMY BROOKS

2716 S.W. 56

OKLAHOMA CITY, OKLA. 73119

405-235-3152 day 681-1515 eve

CAMBRIDGE GLASS COLLECTORS & DEALERS

— ready for immediate delivery —

An exact reprint in black and white from the original and only known 1903 Cambridge Glass Catalog !

106 pages of the first pressed and blown glass items produced by this world famous Cambridge, Ohio factory.

- PRICE \$7.50 -

special discount to dealers

The CAMBRIDGE GLASS MUSEUM 812 Jefferson av. OPEN DAILY - 10 A.M. to 4 P.M.

Harold and Judy Bennett

506 S. 9th Street

Cambridge, OH 43725



CAMBRIDGE '76

1st Annual
National Cambridge Collectors

ANTIQUA SHOW & SALE

JUNE 25, 26, 27 - 1976

*Guernsey Catholic Central High School
Rt. 209 South*

Cambridge, Ohio

HOURS:

FRIDAY, JUNE 25th	6:00 - 9:00
<i>(PREVIEW ADMISSION \$3.50)</i>	
SATURDAY, JUNE 26th	11:00 - 6:00
SUNDAY, JUNE 27th	12:00 - 6:00
<i>(ADMISSION \$1.75)</i>	

*SPONSORED BY THE
NATIONAL CAMBRIDGE COLLECTORS, INC.
IN CONJUNCTION WITH THE THIRD ANNUAL NCC CONVENTION*


**SELECT DEALERS
OFFERING GENERAL ANTIQUES
& CAMBRIDGE GLASS**

Food — Door Prizes — Parking

DEALERS



DIRECTORY

<p>ANTIQUÉ ALLEY 24815 Broadway Bedford, Ohio - 44146 216-232-7739 ---- Marie Spagnola CAMBRIDGE GLASS ROYAL DOULTON</p>	<p>BLACK ROOSTER ANTIQUES 1018 Clark Street Cambridge, Ohio--43725 614-439-2549 ----- M. Sipe CAMBRIDGE GLASS - GENERAL LINE</p>	<p>COLLECTOR'S HAVEN 135 Cynthia Street Heath, Ohio -- 43055 614-522-1635 SPECIALIZING IN CAMBRIDGE GLASS</p>
<p>D'MARIE'S ANTIQUES Rt. #1, c/o Eastern Antique Mart Thornburg, Virginia--22565 703-582-5859 ----- Jim Rankin OPEN DAILY - EXCEPT MONDAY</p>	<p>HAROLD AND JUDY'S ANTIQUE SHOP 437 North 8th Street Cambridge, Ohio -- 43725 614-432-3045-Open by Appointment SPECIALIZING IN CAMBRIDGE GLASS!</p>	<p>HERITAGE ANTIQUES Rt. #5, Cambridge, Ohio - 43725 614-439-3241 TAKE N.8th St.Rd.(County Rd.#33) TURN LEFT AT RAILROAD TRACK.</p>
<p>HOBBY HOUSE ANTIQUES Rt. #1, Cambridge, Ohio - 43725 614-432-6971 - Frank & Lena TAKE RT.#209 W.FROM CAMBRIDGE TO RT.#658 - NORTH 1½ MILES.</p>	<p>HOFFHAVEN ANTIQUES 21 Half Moon Lane Tarrytown, New York -- 10591 Mail-Shows-Phone -- 914-631-2140 CAMBRIDGE, Fosteria Rose In Snow</p>	<p>MARGARET LANE ANTIQUES 2 E. Main Street New Concord, Ohio--43762 Lynn Welker ----- 614-826-4418 CAMBRIDGE GLASS MATCHING SERVICE</p>
<p>LEGEND INN  1225 W. Church St., Newark, Ohio 614-344-2136 43055 ----- Dine with us and see our CAMBRIDGE GLASS COLLECTION Open 4-11 PM Daily Closed Sunday and Holidays HAROLD & MILDRED WILLEY, OWNERS</p>	<p>PRESIDENTIAL COIN & ANTIQUE CO. 6222 Little River Turnpike Alexandria, Virginia - 22312 Gail B. Levine ---- 703-354-5454 WANT LISTS SOLICITED-OPEN 6 DAYS</p>	<p>THIS 'N' THAT PLACE 101 South Street Chagrin Falls, Ohio -- 44022 Lue Koerper ----- 216-247-4928 OPEN THURS. to SAT. 10 AM - 5 PM</p>
<p>A. SPRINGBORN P. O. Box E. G. #962 Melbourne, Florida - 32935 305-254-7439 BUSINESS BY MAIL, SHOWS & PHONE!</p>	<p>NATIONAL CAMBRIDGE COLLECTORS, Inc. Post Office Box #416 Cambridge, Ohio - 43725 Address Correction Requested</p>	
<p>YOU CAN ADVERTISE YOUR ANTIQUE SHOP HERE 1 inch - \$6.00 for 6 months</p>		
<p>DATES TO REMEMBER!!! June 25, 26, 27, 1976 N.C.C. CONVENTION and FIRST ANTIQUE SHOW ----- ALL CAMBRIDGE GLASS AUCTION ----- MARK YOUR CALENDAR!</p>		

FIRST CLASS MAIL