

Cambridge



Crystal Ball

ISSUE NO. 28

AUGUST 1975

Published monthly by the NATIONAL CAMBRIDGE COLLECTORS, Inc.
To encourage and to report the discovery of the elegant and boundless product
of the Cambridge Glass Company, Cambridge, Ohio

Thoughts from the President - - - -

Last month we gave you a little insight to the activities and thoughts of the committees that are working very diligently to provide a progressive and beneficial Club year. We can all receive of the fruits of this labor. And we can each aid in the efforts.

This month you will have two very good opportunities to give this aid. Both are planned for the same weekend to encourage you to attend. First, will be the Quarterly meeting at eight p.m. Saturday August 23rd. Followed by the Second All Cambridge Glass Auction on Sunday the 24th at ten a.m. Both events will be held in the Buckeye Room of the Holiday Inn at Cambridge. Your attendance and participation will greatly enhance both events.

In the event you are unable to attend, you can still provide your support by sending in your donations and consignments for the Auction. Bear in mind that all the profits from the sale will go to the Museum Fund.

There are many other ways in which each of us can aid in the expansion of this Club. We can aid the membership committee by encouraging our friends and other Cambridge Lovers to join our ranks. A membership form is not required to start this. Just a note to the Box Number of the Club and the necessary information will be sent to any person interested in membership.

NOTICE

The U. S. Department of Internal Revenue has ruled that the National Cambridge Collectors is a non-profit charitable organization. As a result, any contribution made to this Club can now be claimed as a deduction on Federal Income Tax returns.

Don't Forget - Mark Your Calendar

ALL CAMBRIDGE GLASS AUCTION

August 24, 1975--10 AM

We can support the Crystal Ball and assist the Editor by sending in our Questions for the Question & Answer column. We can contribute any bits and pieces of information that would broaden the knowledge base for our glassware. This would not need to be an accomplished bit of Journalism (how much of our paper is?) and any material submitted could be returned if so desired. We could also support this paper by placing ads for items wanted and items we want to get rid of. We can also encourage ads for the dealers directory from the shops that we normally buy from. These ads can come from a non-member as well as from members. OUR RATES ARE LOW, and our circulation widespread.

We could even make a little effort and organize a Study Group in our own area. We have a very willing group ready to assist you with your efforts along this line. Just ask.

The real point that we are trying to make is that this is a Club for all Cambridge Collectors. Not just a small group in or around the Cambridge area. You people in California or Texas or Minnesota can also be active participants in this "Year of Progress".

Bill

MEMBERSHIP RENEWAL NOTICE

If the date on your Address Label is -

8-75

This is your last issue of the CRYSTAL BALL! Don't miss a single issue - RENEW YOUR MEMBERSHIP NOW
FORM ENCLOSED FOR YOUR CONVENIENCE!

CAMBRIDGE CRYSTAL BALL
P. O. Box #416
Cambridge, Ohio - 43725

Official Publication of
NATIONAL CAMBRIDGE COLLECTORS, INC.

1975-76 Officers & Committee Chairpersons

PRESIDENT - - - - - William C. Smith
VICE-PRESIDENT - - - - - Charles Upton
SECRETARY - - - - - Janice Hughes
TREASURER - - - - - David G. McFadden

CRYSTAL BALL Acting Editor- Phyllis Smith

BUDGET & FINANCE- - - - - Bill Smith
BY-LAWS - - - - - Dave Rankin
CONVENTION- - - - - Mary Jane Miller
MEMBERSHIP- - - - - Dave Hardesty
MUSEUM- - - - - Ed Ruby
PROGRAM & ENTERTAINMENT - - - Evelyn Allen
PROJECT - - - - - Charles Upton
PUBLICITY - - - - - Frank Wollenhaupt
STUDY GROUP ADVISORY- - - - - Dave Rankin

CLASSIFIED ADVERTISING RATES

5¢ per word \$1.00 minimum

We cannot mix type size in Classified Ads. Abbreviations and initials will count as words. Payment in full must accompany all ads.

DISPLAY ADVERTISING RATES

	Members	Non-Members
1/8 page - - - - -	\$ 4.00 - -	\$ 6.00
1/4 page - - - - -	7.00 - -	10.00
1/2 page - - - - -	12.00 - -	18.00
3/4 page - - - - -	17.00 - -	25.00
full page- - - - -	22.00 - -	33.00

DEALER'S DIRECTORY

1" ad- - - - - \$6.00 for 6 months

Advertising copy must be in our hands by the 15th of each month to assure publication in our next issue. Advertisements containing reproductions will not knowingly be accepted unless clearly stated.

CAMBRIDGE CRYSTAL BALL assumes no responsibility for items advertised and will not be responsible for errors in price, description or other information.

Please address all correspondence to:

NATIONAL CAMBRIDGE COLLECTORS, INC.
P. O. Box #416
Cambridge, Ohio - 43725

PLEASE NOTIFY US IMMEDIATELY OF ANY CHANGE IN YOUR ADDRESS!

PLEASE enclose a Self-Addressed Stamped Envelope when requesting information.

YOUR BOARD OF DIRECTORS RECOMMENDS ---

The following changes to the ByLaws of this organization have been proposed to, and studied by your Board of Directors and a decision was made to place these issues before the membership for their consideration. A vote will be called for at the Quarterly meeting of the membership on Aug. 23, 1975. Your Board of Directors recommends your acceptance of these proposed By-Law changes.

Proposal #1

Whereas, it is the function of the Board of Directors to direct the activities of the organization for the benefit of its members, it is felt that for the benefit of the organization, the Directors should display an interest in performing their duties.

Therefore, be it resolved that Article III, Section 2 of the By-laws be amended to read: "(d) It may fill vacancies that occur during the year. The President shall appoint, and the Board confirm by a 2/3 vote of those in attendance, a member to fill any vacancy occurring. Said appointee shall serve for the balance of the term being vacated."

Therefore, be it resolved that Article III of the By-laws be amended by adding Section 4 to read:

"Section 4 Resignation of Board Members. All resignations from the board, except for those covered under Article X, shall be made in writing to the President."

Proposal #2

Whereas, The By-laws currently assign the responsibility for maintaining membership records to both the Secretary and the membership committee; and

Whereas, It is desired to eliminate such conflicting provisions; now, therefore, be it Resolved, that Article VI, Section 1, of the By-laws be amended to read:

"Section 1 Membership. This committee shall promote activities designed to increase membership and shall perform such additional duties as specified by the Secretary in maintaining the records of membership."; and

Resolved, that Article II, Section 3, of the By-laws be amended to read:

"Section 3 Secretary. It shall be the duty of the Secretary to keep the official record of all members, voting and honorary, provide verification of voting members as required, record the attendance at meetings of the organization, record and preserve the minutes of such meetings, make the required reports, and perform such other duties as customarily pertain to such office."

TRADEMARKS

BY DAVE RANKIN

GENUINE HAND MADE CAMBRIDGE Paper Label




The last general line trademark to be discussed is the GENUINE HAND MADE CAMBRIDGE paper label. This label is shown in figure 1 and differs only slightly from the Cambridge  label which preceded it. The  was dropped and emphasis was placed on the word CAMBRIDGE. In addition to the paper label in figure 1, the word CAMBRIDGE shown in figure 2 was registered with the U. S. Patent office. Both applications were filed September 19, 1947 under the new trademark act of 1946 in class 33-glassware. Registration #514037 covers the label in figure 1 and registration #514036 covers the word CAMBRIDGE, figure 2.



figure 1

Cambridge

figure 2

In both registrations Cambridge claimed usage since 1927; however, clarification is required. We have already established that the CAMBRIDGE  paper labels were used in 4 forms from 1927 to 1937. This label first appeared in advertising in early 1938 and was also announced to the trade in an article in China, Glass and Lamps in January, 1938.

The label remained in this format until the final closing of the plant in 1958. However, there are variations in size and paper.

The oldest versions, like the versions which preceded it, were printed with black ink on yellow paper and have appeared in two sizes. The most frequently observed size measures 20mm x 12mm while the larger size, 28mm x 16mm, is occasionally observed. We have not been able to identify any specific time frame for the larger label since the few pieces observed so far, appear to have been produced throughout the entire date range of 1937-1958.

A different paper stock was used at the end and these labels are also 20mm x 12mm but printed with black ink on gold foil paper. The foil label was used during the reopened period 1955-1958 but could have come into use

prior to 1955. We have not been able to determine the exact transition date, however, the plant closing and reopening is the most significant event from 1937-1958 that is likely to have caused a change in labels.

Until more information surfaces we will not make a distinction, datewise, between the large and small sizes and we will use the first plant closing as the transition date.

In summary, the following date ranges apply to the GENUINE HAND MADE CAMBRIDGE paper labels:

Yellow paper (large and small)	1938-1954
Gold foil paper	1955-1958

Next month we will begin discussions of specialty trademarks and labels.

DISPLAY SIGNS FOR SALE



Copyrighted Label of

**NATIONAL CAMBRIDGE
COLLECTORS INC.**

**HEAVY PRESSBOARD CONSTRUCTION
41" X 32"
ENAMELED IN GOLD AND BLACK**

SUITABLE FOR
DISPLAY ROOM, SHOP, OR SHOW BOOTH

\$14.00 EACH PLUS SHIPPING

**NCC SIGNS P.O. BOX 416
CAMBRIDGE, OHIO 43725**

SEE YOU AT THE QUARTERLY MEETING AUG.23, 8PM

DEADLINE NOTICE

Due to vacation schedules, all advertisements and copy for the September issue of the CRYSTAL BALL, must be in our hands on or before AUGUST 12, 1975!! Anything arriving after that date will be included in the October issue if at all possible.

TOUCH OF HISTORY

Jack and Sue Rettig

China, Glass & Lamps

Jan. 23, 1922

Jan. 15, 1923

CAMBRIDGE GLASS CO.

A new shade of colored glassware, which has been the cause of much favorable comment is the "Azurite" introduced for the first time by the Cambridge Glass Co., Cambridge, O., in room 728 at the Fort Pitt. It is a full-body blue not unlike Harding blue. Another new line from this factory is called the "Ebony." It is a very black and represents an achievement in this class of glassware. Both new colors come in complete tableware lines, including vases, candlesticks, bowls, candy-jars, compotes and cheese and cracker plates.

In addition to the plain "Azurite," the ware is being offered in two shades of double lustre, with four patterns in gold encrustation and in combination with two contrasting colors used for lines and reliefs. The gold-encrustation patterns on "Azurite" bodies are most attractive. In fact, the entire line is beautifully conceived and executed. An especially appealing decoration is that of black peacocks and dragons on the blue body. The peacocks and dragons also are shown in a contrasting shade of green, which, contrary to what might be expected, does not clash with the blue.

This factory also is showing iced tea and lemonade sets in "Murano Crystal." This ware is acid-vinted and seems to send out coolness and should prove especially interesting in warm weather. There are several interesting candlesticks in this new ware, as well as a round-shaped candy box. A new decoration of stemware is hand painted enamel border in blue with a pink flower and green leaf. A gold encrustation border is another new decoration on stemware.

On the gold-encrusted "Azurite" ware, the Cambridge Glass Co. has placed a gold label bearing the wording: "Cambridge Art Glass, Ohio, U. S. A."

The Cambridge lines will be shown in room 339 at the Hotel Morrison, Chicago, next month with E. A. Mechling in charge.

The introduction of opaques by Cambridge!

The article of Jan. 23, 1922 is the first introduction of the azurite and ebony glassware. It also describes decorations of peacocks and dragons in black and green on the azurite. A rarity indeed must be the gold encrusted azurite with the gold "art glass" label.

The year 1923 brought primrose yellow, helio and carrara, along with a new innovation of white gold decoration.

In the Jan. 7, 1924 issue they continue to speak of Cambridge art glass. Some of it is ebony, stippled in either gold or silver. Also, jade green and ivory are introduced. The basket of flowers in multicolor enameling on the ivory vase is among the most beautiful decorations Cambridge made. It was on display at this year's convention.

The rams head bowl designed from the wedgewood earthenware is described in the Jan. 14, 1924 article along with the matching candlesticks shown in the June 5, 1922 article. It might be of interest to note the candlestick design preceded the bowl.

Next month, Rubina!

THE CAMBRIDGE GLASS CO.

Living up to the reputation gained when they introduced the "Azurite" and "Ebony" glass last year, the Cambridge Glass Co., of Cambridge, O., comes forward this year with some unusual originations in colored ware as well as additions to former lines. The display in Room 728 at the Fort Pitt is one of the most colorful and attractive showings of glassware ever seen at the Pittsburgh Exhibit.

Leading the offerings in colored ware—and the color runs clear through as it is a body color—are the new "Primrose Yellow," "Helio" and "Carrara." In color selections and

shapes as well as choice of decorations, the new colors are worthy of the Cambridge line.

The "Primrose Yellow" is just what the name implies, a yellow of warmth and volume but not extreme. There is a great variety of shapes ranging from small vases to vases suitable for lamp bases. There are several decorations in gold and also in white gold. The latter is somewhat of an innovation. It has the appearance of silver, but, unlike silver, it does not tarnish. There are also several narrow band decorations in green, blue and black treatment.

"Helio" is the name of an exceptionally attractive color. It is of the purple family, but delicate in tone and very rich in appearance. The shapes in this color are extensive in number and there is a choice of decorations as wide as that in the "Azurite" and "Primrose Yellow."

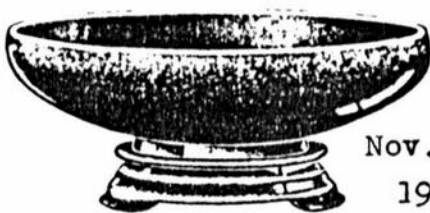
The "Carrara" is a brilliant white and stands in strong contrast to the deep-black "Ebony." This colored ware is especially attractive with gold decorations and a number of ideas in this connection are shown. A large number of new pieces have been added to the "Ebony" line, making this line one of the most extensive ever offered the trade. Some new decorative conceptions also are shown. One of the new things in the colored glass is a smoking tray, consisting of a tray with a match-box holder in the center and three receptacles for ashes, all of which are moveable.

In crystal, the Cambridge Glass Co. is offering some new ideas in gold bands and encrustations as well as some new etchings and light cuttings.

The Cambridge Glass Co.

CAMBRIDGE, OHIO, U. S. A.

THE CAMBRIDGE GLASS COMPANY, CAMBRIDGE, OHIO, U. S. A.



No. 13. 11 Inch Flower Bowl and Base Showing one of the many items we make in the popular EBONY GLASS.



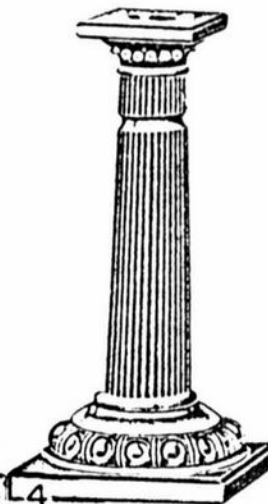
No. 15. 8 1/2 Inch Flower Bowl This bowl is of AZURITE GLASS with gold encrusted border decoration No. 100.

We produce a number of different articles in AZURITE glass and decorate them in various widths of Gold Borders.

Write us for full particulars or better yet allow us to make you up a sample package for your approval and try out.

Also please note that we are now decorating the EBONY GLASS in these Gold Borders which makes a most attractive line.

SEE YOU AT THE QUARTERLY MEETING AUG. 23, 8PM.



This is one of the many pleasing designs in Candlesticks which we are producing not only in Crystal, but also in our new Azurite and Ebony Art Ware. Furnished in both plain and Coin Gold Encrustation.

Write us for information and prices or call on our nearest representative.

June 5, 1922

SOME NEW ITEMS IN DECORATED COLORED GLASSWARE

China, Glass & Lamps



Jan. 7, 1924

"Cambridge" Ebony Stippled, Jade Green and Ivory Glass

A few of the 1924 offerings in art glass from the Cambridge Glass Co., present a fitting example of the artistic progress of American glass manufacturers. The new items illustrated are unique and most admirable from a merchandising viewpoint. Artistically, they take front rank among the colored glass wares now before the public.

The Cambridge Glass Co. from its factory at Cambridge, Ohio, during the past three years has sent out a very extensive line of colored glass, specializing on colored glass with gold encrustations. The items shown are some of the new wares. The colors must be seen because they cannot be described.

The comport and candlestick in stippled effect are strikingly beautiful wares. The background is ebony glass—thin blown. The comport is stippled in silver with silver edges around the base and flare of the bowl. The candlestick is ebony stippled in gold. Rather startling is the effect, but it is attractive and rich-looking. Other pieces in addition to those shown are

made in both gold and silver stippled effects.

Two new colors in art glass are shown. The footed vase is in jade green. The glass is thin blown and the coloring is as near to jade as glass might be. Around the top is a wide gold encrustation while there is a narrow gold band around the outside of the foot.

In the production of the decorated vase basket, artistic heights have been reached. The glass is ivory in color and the shape is most pleasing. As a decorative motif, there are baskets of flowers in natural colors. The background has been etched and the colors applied in enamel, making an extraordinarily effective decoration on the ivory glass. The edges are in coin gold.

Of course, there are a variety of other pieces to be had in both the jade green and ivory glasses. The examples shown will give an idea of the lines and other decorative possibilities. The display of the Cambridge Glass Co. is in Fort Pitt Hotel.

Jan. 14, 1924

THE CAMBRIDGE GLASS CO.

WHEN such a wealth of beauty as in the display of the Cambridge Glass Co., of Cambridge, O., stares the reporter in the face, it is hard to pick the most distinctive things to write about. The Cambridge display is in Room 728 at the Fort Pitt Hotel. Here was a compote set in Azurite—that lovely bright blue—done in the Wedgwood manner, with the embossment and the ram's head handles we have always associated with the Wedgwood earthenware pattern known as Belmar. Candlesticks with square top and base matched the bowl.

Here also was a mottled gold and colored line in five colors, with gold edge line on all pieces, and a black glass base for some. Especially good was a line of black glass with gold encrusted fleur de lis design in wide bands, and some black vases with encrusted gold borders an inch and a half wide. Perfume bottles of cut crystal, in colored optic and others with gold encrustation—all with long stoppers have been selling most satisfactorily. Since we haven't one, we were told we must be the only woman in the world who hasn't.

A new line of amber glass, deep and rich in tone, is offered for the first time. This is flat ware, and the pattern looks like very wide optic, but is pressed into the flange of the bowl. There is a very complete line of mulberry, topaz and emerald glass, of candle sticks, jugs, bowls, tumblers and stemware that is colorful and interesting. A very comprehensive line of colored glass salad plates made us wonder why salad was ever served on any other sort of plates, for the pale green of lettuce would enhance the value of these colors, and the glass would make the salad all the more tempting. These plates match every style of glass ware they make. Another interesting pattern in colored glassware had reserves in the gold border where flowers of the undecorated glass showed through. The various matching items are available, in many colors.

May 19, 1924

Just two days ago, The Cambridge Glass Co., 184 Fifth Avenue, received the first samples of very attractive boudoir sets, consisting of a small covered jug, one glass and a well shaped tray, which are being made up in emerald, amber, mulberry, topaz and crystal, with band decorations and encrustations. At the same time the first samples of gold encrusted colored stemware arrived—in cobalt, amber, mulberry and emerald.

IS IT CAMBRIDGE ?

SORRY!!! Due to lack of space this month, the "Pioneering in Quality Glassware" article will be continued next month.

by Dave McFadden

During a recent visit to the Mosser Glass Company in Cambridge, Ohio, we had an informative discussion with Tom Mosser.

He began working at the Cambridge Glass Company about 1943 with his father. According to Tom, he worked his way up thru the ranks of the Cambridge Glass Company and eventually became a floor foreman. He worked at Cambridge until it closed in 1954, at which time he went to work briefly for another glass factory in central Ohio. He returned to Cambridge when it re-opened and remained until it closed again in 1958.

At that time, Mr. Mosser obtained the original Cambridge pharmaceutical molds and he and a partner began a small business producing pharmaceutical glassware, which they are continuing to produce at this present time.

The Mosser Glass Company also owns a few other original Cambridge molds, one of the most famous being the 3" swan. This mold is being used at the present time and the swans are being made in seven colors. They are: crystal, amethyst, cobalt blue, red, amber, green (which appears to be lighter than the Cambridge color of Forest Green, which is a dark green) and a light blue (darker than the Cambridge color of Moonlight blue). At this time Mosser Glass is doing some iridizing and some of the first things to be done are the cobalt swans.

The first advertisement we have seen for swans by Cambridge was in 1928. It appears that over the years of production, there were 3 different variations to the 3" swan mold.

The first style swan had a low wing and much detail on the feathers. (Refer to Welker reprint #1, page 36.) The second style swan is similar to the first except the wings are raised higher and while there is some feather detail, it is not as detailed as the first style. (Refer to Welker reprint #1, page 26.) The third style swan (introduced prior to 1943, according to Mr. Mosser) was the last mold and is the one owned and currently being used by the Mosser Glass Company. It had no visible feather detail and the wings are usually spread further.

Mr. Mosser showed us the tool which is used to hand finish the swans. (It is the same tool which was originally used at Cambridge.) The neck is already curved as it comes from the mold. The tool used has a foot, shaped like the bowl of the swan, and a handle at the opposite end. The foot is placed in the bowl of the swan to hold it in

place while the finisher shapes the neck and the wings. Since the twist of the neck and the spread of the wings are a hand process, this accounts for the wide variations seen in the swan.

Now, the problem is how to tell the difference between an original Cambridge swan and a swan made by the Mosser Glass Company. As we said before, the Mosser swans are being made in the third style mold in colors listed earlier in this article. Mr. Mosser explained that his finishers usually do not take the time to spread the wings. Also remember that none of the re-issued swans are signed.

Mr. Mosser tells us this is a popular item in his line, is a good seller, and he will probably make it in all his colors.

QUESTIONS & ANSWERS

by Frank Wollenhaupt

Can you tell me what colors I will find the Caprice pattern in?

The colors that have been reported in the Caprice pattern are: Crystal, Moonlight, Pistachio, LaRosa, Royal Blue, Amethyst, Dark Green, Mocha, Milk Glass, Mandarin Gold, Crown Tuscan and an opaque lavender color that appeared at this past year's convention. The Colors that have been seen in dinnerware are: Crystal, Moonlight, LaRosa, Pistachio and Mocha. The other colors that I have listed have been found in occasional pieces. If any readers have found Caprice in colors other than those listed above PLEASE share this information with the rest of the Club members.

Does the Top in the Barrel Set screw in???

The top does not screw in, but fits in loosely. To date every one of these that I have seen has been ebony. The Keg Set was introduced in the spring of 1925. The following is taken from a trade journal "China Glass and Lamps", May 4, 1925 issue: "Among the new samples at their display room at 184 Fifth avenue is an all-glass liquor set in the form of a keg, set on a black base like a rustic wooden bench, a glass tray and six Whiskey glasses. The tray is of black glass like the base for the keg and the keg itself and glasses may be had in blue, topaz, or amber. The set is priced to retail at \$6 or \$7." The keg set has also been seen in pink and amethyst.

DEALERS



DIRECTORY

<p>ANTIQUE ALLEY 24815 Broadway Bedford, Ohio - 44146 216-232-7739 Marie Spagnola CAMBRIDGE GLASS----ROYAL DOULTON</p>	<p>ANTIQUES BY E. H. & W. 22 E. Home Street Westerville, Ohio - 43081 - H O U R S - NOON TO 5 PM - SATURDAY & SUNDAY</p>	<p>COLLECTOR'S HAVEN 135 Cynthia Street Heath, Ohio - 43055 614-522-1635 SPECIALIZING IN CAMBRIDGE GLASS</p>
<p>HERITAGE ANTIQUES Rt. #5, Cambridge, Ohio - 43725 614-439-3241 TAKE N.8th ST.RD.(County Rd.#33) TURN LEFT AT RAILROAD TRACK</p>	<p>HOBBY HOUSE ANTIQUES Rt. #1, Cambridge, Ohio - 43725 614-432-6971 - Frank & Lena TAKE RT.#209 W. FROM CAMBRIDGE TO RT.#658 - NORTH 1 1/2 MILES.</p>	<p>THE VICTORIAN SHOPPE 623 Wheeling Ave. Cambridge, Ohio - 43725 614-432-2515 ---- 614-439-2344 CAMBRIDGE GLASSWARE</p>

Classified

For Sale

SUPPORT OUR
ADVERTISERS

Club News

HOKEY POKEY CLUB NEWS

CAMBRIDGE: Large brown Owl Lamp; 3-pc. Console Set with gold etching;ebony Candy Jar. DUNCAN MILLER: amber Swan Flower Set(1 lg., 2 sm. for candles). R.S.PRUSSIA: Bowl with floral design (red mark). UNKNOWN: oval Red Slag Bowl. ALL IN EXCELLENT CONDITION. For information, contact: THELMA EVERETT, Route #2, Guernsey, Ohio - 43741----(County Road #86 - Birds Run)-----614-498-7771

At the July meeting of the Hokey Pokey Study Club, the following members attended: Dave and Sue Rankin, Dave and Joy McFadden, Bill and Phyllis Smith, Frank and Vicki Wollenhaupt, JoAnn Herman and her daughter, Julie, filling in for the absent Don.

This meeting was centered around general discussion. Our main discussion dealt with future plans for helping the National Club! We also discussed what was selling really well at the present time. There were quite a few finds this past month and most of our discussion centered around those pieces.

The pieces found were: an amber Weatherford candy jar; an emerald Weatherford celery & center bowl;a pair of crystal Pouter Pigeon bookends; a pair of crystal Gadroon candlesticks; a crown tuscan Yardley Sachet; a crystal Martha Washington ice bucket;a crystal Fernland childs creamer; a Near - Cut special bowl with intaglio flowers; a crown tuscan Seashell salad plate;moonlight Everglade Tulip vase;a marigold carnival Feather comport;a Helio bud vase; a carmen 2 1/2oz. handled Tally-Ho tumbler; a 10in. candlestick in ebony w/gold decoration; and last but not least, a crystal double and single Shot glass. This past month proved to be a very productive one for our study club.

STATEMENT OF POLICY!

Public disclosure of NCC member names and addresses will not be made without that person's knowledge and consent!

Note: For Study Group purposes, see June, 1975 issue, page 3.

LAURIE LOU BECKER
W239 N7562 Maple Ave.
Sussex, Wisconsin - 53089
Phone--414-246-3102

FOR SALE

RARE Caprice #200 Line, Moonlight Blue -
Ref. Welker II, Page 45

7 Goblets ----- \$ 9.00
6 Cocktails ----- 8.00
1 5oz. ftd. Tumbler ----- 8.00

Georgian Line, Moonlight Blue

5 Water Tumblers, unmarked ----- 5.00
1 Water Tumbler, marked ----- 6.00
5 Juice Tumblers, paper label ----- 6.00
4 Sherbets, unmarked ----- 5.00

Caprice #300 Line, Moonlight Blue -
Thin Stemware

6 Low Sherbets ----- 7.00
1 5oz. ftd. Tumbler ----- 6.00

Nearcut #2692 - Ref. Welker II, Page 109

2 Custard Cups, marked ----- 2.50

WANTED

Cambridge Swans
Caprice in all colors (except for clear)
Thin Stems and #200 Line

PRICED EACH --- POSTAGE & INSURANCE EXTRA

THE BIG ONE !!!

ALL
CAMBRIDGE GLASS
AUCTION

Cambridge, Ohio
STARTS AT 10:00 A.M.
Sunday, August 24th

HOLIDAY INN
"BUCKEYE ROOM"
Exit I-70 at SR 209
(1 Mile West of I-77)

PARTIAL LISTING

Nude Stem Candle Holder with Carmen top - Forest Green Stack Ash Tray Set - Round Luncheon Set in Amber - Carnival Inverted Strawberry pieces - Topaz Dresser Compact - Daffodil Etch Mayo with Underplate - Georgian Tumblers - Opaque Console Set - Decanter Set - Berry Bowls Everglade 2 Lite Candlestick - Nude Stem Dinner Goblet in Pistachio Crackle - Ebony Turtle Flower Frog - Drape Lady Lamp Base in Lt. Emerald - and many many more choice items!!!!!!

Consignments and donations for this 1975 ALL CAMBRIDGE GLASS auction can be left at any of the following locations:

Evelyn Allen, 135 Cynthia St., Heath, Ohio 43055	Phone 1-614-522-1635
Marq Ozierwa, 487 Maple Avenue, Newark, Ohio 43055	Phone 1-614-345-1316
Pavlov's Music Center, 623 Wheeling Avenue, Cambridge, Ohio	Phone 1-614-432-2515
Jack Rettig, 5616 Hensel Woods Road, Gahana, Ohio 43230	Phone 1-614-855-1711
William Smith, 4003 Old Columbus Rd., Springfield, Ohio 45502	Phone 1-513-323-3888
Frank Wollenheupt, 633 Bowen Street, Dayton, Ohio 45410	Phone 1-513-254-2937

Consignments can be accepted at the Holiday Inn Saturday Evening at the Quarterly Meeting or Sunday Morning from 7 to 8 AM. These must be accompanied by a complete listing and include where possible the correct catalog description of the items.

AUCTIONEERS = = = = = COL. MAX D. CATER and DALE SNODE

NATIONAL CAMBRIDGE COLLECTORS, Inc.
P. O. Box 416
Cambridge, Ohio - 43725

Address Correction Requested