

Cambridge



Crystal Ball

ISSUE No. 26

JUNE 1975

Published monthly by the NATIONAL CAMBRIDGE COLLECTORS, Inc.
To encourage and to report the discovery of the elegant and boundless product
of the Cambridge Glass Company, Cambridge, Ohio

Thoughts from the President - - - -

We trust that by the time this issue reaches each of you that you will have had ample time to recover from your Convention activity and to become refreshed for the big events of the coming year.

"1975 CONVENTION", what a convention it was!! The events, the terrific panorama of Cambridge glass, the very enlightening talk and conversations of our guest speaker, Mr. Eugene Henn, and last but not least the wonderful and warm companionship of a fine group of people.

Those who assisted on the various convention committees should take great pride in a very fine accomplishment. This was an accumulated effort of many people that resulted in a weekend that will be memorable for those that had the opportunity to attend.

Our sincere Thanks go to those Officers and Directors who piloted us thru this past year. To Bob Coyle, Past President, to Dick Pavlov, Secretary for the past two years, and to Gary Campbell, Past Treasurer, we owe a particular "Thank You". We also wish to Thank those two out-going Board members, Dale Snode and Gary Campbell, for the aid that they have given in this capacity. The efforts of all of you have been greatly appreciated.

RENEWAL

If the date on your address label is -

6-75

it is time to renew your subscription.

Our Congratulations to the other new Officers, Charles Upton, the new Vice President, Janice Hughes, the new Secretary, and David McFadden, the new Treasurer. A Welcome is extended to the people elected to the Board of Directors. To Evelyn Allen, who was re-elected, and also to Janice Hughes and Lynn Welker new members. With the help of these fine people and of the very dedicated group that will continue serving on the Board we feel that this will become "the year of progress" for this great Club.

Our first two years have proven that we as a group can work together successfully and they have accomplished much for us. The first year being one of organization and the second year a time of settling into harness, so to speak. With these two very necessary steps taken, it is now time for "total examination" as a membership body and proceeding in the appropriate direction to achieve greatest progress.

We must each make this examination. To examine our desires for the Club as well as our own personal abilities to further the progress. A transmittal of the findings of this search is all that remains to make this an asset for the Club. We will achieve the greatest successes when we discover and utilize the assets that we have available.

Each of us, thru our membership applications, have expressed an interest in the well being of this Club. Now let us transmit our assets to the various Officers and Board members and each contribute something to the betterment of this organization. In so doing, we can assure this year as the "YEAR OF PROGRESS".

Bill
W. C. Smith

CAMBRIDGE CRYSTAL BALL

P. O. Box 416
Cambridge, Ohio 43725

Official Publication of
NATIONAL CAMBRIDGE COLLECTORS, Inc.

Club News

PRESIDENT William Smith
VICE PRESIDENT Charles Upton
SECRETARY Janice Hughes
TREASURER Dave McFadden

NATIONAL CAMBRIDGE COLLECTORS, Inc.
Quarterly Meeting
Holiday Inn - May 4, 1975

CLASSIFIED ADVERTISING RATES

5¢ per word - \$1.00 minimum

We cannot mix type sizes in classified Ads. Abbreviations and initials will count as words. Payment in full must accompany all ads.

DISPLAY ADVERTISING RATES

	Members	Non-Members
1/8 page	\$ 4.00	\$ 6.00
1/4 page	7.00	10.00
1/2 page	12.00	18.00
3/4 page	17.00	25.00
full page	22.00	33.00

DEALER'S DIRECTORY

1" ad \$6.00 for 6 months

Advertising copy must be in our hands by the 15th. of the month to assure publication in that month's issue. Advertisements containing reproductions will not knowingly be accepted unless clearly stated.

Cambridge CRYSTAL BALL assumes no responsibility for items advertised and will not be responsible for errors in price, description or other information.

CRYSTAL BALL Editor . . . Dick Pavlov
Membership Chairman . . Dave Hardesty
Project Chairman . . . Charles Upton
Program & Entertainment . Evelyn Allen
Budget & Finance Bill Smith
Publicity Frank Wollenhaupt
Study Group Advisory . . . Dave Rankin
By-Laws Dave McFadden
Convention Chairman . Mary Jane Miller
Museum Chairman Ed Ruby

Please address all correspondence to:

NATIONAL CAMBRIDGE COLLECTORS, INC.
Box 416
Cambridge, Ohio 43725

NOTIFY US IMMEDIATELY OF ANY CHANGE IN ADDRESS.

SASE - When requesting information, Please send a Self Addressed Stamped Envelope.

The meeting was opened by President Robert Coyle who welcomed all those present and expressed his appreciation for all the work that had been done by members to assure the success of the convention.

SECRETARIES REPORT - The name of Dave McFadden was to be added to the previous minutes as being present at the February meeting.

TREASURERS REPORT - Report was given by Gary Campbell and a detailed financial report by Bill Smith will appear in this issue.

MEMBERSHIP REPORT - Evelyn Allen had no report because her record book was being used to make the necessary year end reports.

PROJECT REPORT - Dave Rankin talked briefly on the Cambridge Glass Auction, the Near Cut Clinic, the Donation jar and the display at the show. He reported that the dates of the next Cambridge Glass Auction would be August 25, 1975 - time and place to be announced in the CRYSTAL BALL.

MUSEUM REPORT - Ed Ruby announced that the Museum had just received 2 NEAR CUT catalogs - donated by the Hokey Pokey club.

OLD BUSINESS - Frank Wollenhaupt asked about the permanent plates for the CRYSTAL BALL. Fran Pavlov stated that she had talked with the printer and they were able to save the plates only for a short time.

The proposed by-law change concerning study groups was discussed by Bill Smith. This was previously sent to all voting members. A motion to accept the motion was made by Frank Wollenhaupt and seconded by Dave McFadden. Motion carried.

Dave Rankin said he had application forms for persons interested in forming Cambridge Study Groups in their area.

CLUB NEWS

Continued from page 2

NEW BUSINESS - Results of the election: Being placed on the Board of Directors for four year terms were: Evelyn Allen, Janice Hughes and Lynn Welker. Board members then adjourned to elect officers. During their absence, the film "The Glass Lady" was shown.

The Board of Directors returned and announced their election of officers as being: President - Bill Smith; Vice President - Charles Upton; Secretary - Janice Hugnes; Treasurer - Dave McFadden.

Outgoing President, Bob Coyle thanked Dave and Sue Rankin for auditing the books and records. He also announced the National Cambridge Collectors club was presenting an Honorary membership to Mr. Eugene P. Henn. Mr. Henn expressed his gratitude to the club for his recognition.

Newly elected President, Bill Smith, asked for help from all members in the coming year to make the club more successful.

A motion to adjourn was made by Frank Wollenhaupt and seconded by John Wolfe. Motion Passed.

HOKEY POKEY CLUB NEWS

The April meeting of the Hokey-Pokey Study Group was held on Sunday, April 19 at the home of Dave and Sue Rankin. After a luscious potluck meal and some work on posters for the convention, we settled down to a discussion of the various blue colors of Cambridge Glass.

Show and tell produced a footed Nearcut (small) plate #2694 pattern, Springtime candleholder in cinnamon color, amber powder box with gold floral design, Chelsea crystal oval relish dish, Weatherford light green covered jelly, a 5 inch nude with shell plate in crystal, and an amethyst sweet potato vase.

IT'S EASY

to start a Cambridge Collectors study group. Here's how:

1. All you need is three people who are members in good standing of the National Cambridge Collectors, Inc. and who have a sincere interest in the study and collecting of Cambridge glass. If you don't know of any other interested members in your area, contact the chairman of the Study Group Advisory Committee. He will place a notice in the Crystal Ball requesting names of other interested members.
2. Send for the information packet for prospective study groups available from the Study Group Advisory Committee. This packet includes an application for approved status and the rules applicable to approved study groups.
3. Make written application for approved status and pay the application fee of \$15.
4. Approved study groups will receive a certificate of approved status and an initial guidance information packet. This information packet will include advisory comments, suggested meeting topics, instructions for submitting reports and other information valuable to new study groups.

NATIONAL CAMBRIDGE COLLECTORS CLUB STUDY GROUPS

The following people have shown interest in either forming or joining Cambridge Study Groups in their area. Anyone interested should contact these people.

RICHMOND HTS, OHIO

Stephen & Susan Horner
145 Chestnut Lane #117
Richmond Hts., Ohio 441143

TRADEMARKS

BY DAVE RANKIN

CAMBRIDGE PAPER LABEL

This month we will discuss the first of two groups of trademarks centered around the word CAMBRIDGE.

The CAMBRIDGE  trademark was registered in 3 classes:

Registration # 278643 issued December 23, 1930 in class 33, Glassware, covers an extensive list of glass items including table service, figure flower holders, vanity articles and swans;

Registration # 279630 issued January 20, 1931 in class 34, Heating, Lighting and Ventilating Apparatus, covers candlesticks; and

Registration # 279636 issued January 20, 1931 in class 8, Smokers' Articles, covers ash trays and the like.

The registration states that the trademark (shown in figure 1) "has been used and applied to said goods in applicant's business since 1927.



figure 1

The trademark is applied or affixed to the goods or to the packages containing the same by placing thereon a printed label on which the trademark is shown. "

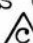

In our search for actual label usage we found four different versions, each one with a slight variation from the preceding version. All versions contain the word CAMBRIDGE and the  symbol and are printed with black ink on yellow paper.




figure 2



figure 3

The oldest label, figure 2, has the word TRADEMARK added to the registered version. It appears as two words, one on each side of the  symbol. It measures 9mm X 16mm. We did not locate this label in any trade advertising, but we determined that it was the oldest version on the basis of the pieces we have observed with this label. Since it did not appear in the advertising, we have no indication of the date of discontinuance. Until more information is found our date range is 1927-?.

The next version is the same as our oldest label with the addition of the words MADE IN U. S. A. along the bottom of the oval, see figure 3. We have not observed an actual CAMBRIDGE  MADE IN U. S. A. label other than in the trade advertising where it appears from February through April, 1930 only. We hesitate to suggest that this label was used for such a short period of time. It is more likely in this case that the label came into use on the goods prior to its introduction in the advertising. Again until more information surfaces, we will use a date range ?-1930.

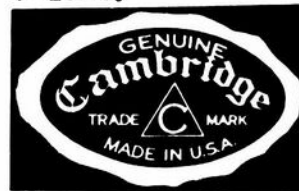



figure 4



figure 5

Our third label, figure 4, has the word GENUINE added at the top of the oval. The GENUINE CAMBRIDGE  label appeared in the trade advertising May, 1930 through February, 1932. It measures 11mm X 17mm.

Continued on page 15

WE ENCOURAGE YOUR SUPPORT
OF ALL DEALERS
WHO PLACE ADS IN THE
CRYSTAL BALL!

While the Hekey-Pokey Study Group has been in the process of doing research thru the old trade journals, we came across this lengthy article in a December 27, 1926 issue of China, Glass and Lamps, which we would like to share with you. It is reprinted with the permission of China, Glass and Tableware.

Pioneering in Quality Glassware at Cambridge
by J.M.Hammer

Just what factor stands out in carrying a glassware factory thru 25 years of growth, helping it overcome great difficulties and enabling it to improve steadily its product in short, what makes it successful, perhaps often has aroused interest and speculation.

That factor is courage when The Cambridge Glass Co. is considered.

Twenty-five years ago The Cambridge Glass Co. was founded in a period of overgrowth in the glassware industry. Its first operation was imperiled by failure of its natural gas supply. Today it is again using its own gas, but with sufficient quantity apparently assured.

It took courage to overcome those first difficulties, as it did to live through and carry on in the financial troubles which came later. Also it took courage a few years ago to discontinue lines which meant \$400,000 worth of orders a year to the factory and substitute better wares for a different market.

Looking into the progress of the Cambridge Glass Co. in the years of struggle as well as in the recent twelve months, we find the guiding and inspiring figure of Arthur J Bennett. His boys, Bennett's Boys, he says, helped him and are his reliance today. But the boys who have been associated with Mr. Bennett in the valley and on the hilltop declare it was his leadership.

To the fundamental quality of courage in the history of The Cambridge Glass Co. must be added the grace of co-operation between leader and lieutenants. The leader gave of his best and his utmost and thus inspired his associates.

Today, The Cambridge Glass Co. is preparing to celebrate the 25th anniversary of its first piece of glassware. A quarter of a century has Arthur J. Bennett guided his factory at Cambridge in Guernsey county, Ohio. It has grown steadily, its products have a world-wide market and yet the ideal of the best quality in glass still holds sway. Recent improvements in equipment are counted upon to still further facilitate the manufacture of glassware of ever increasing quality.

(Continued Next Month- Reprinted with permission of China, Glass and Tableware.)

COLLECTORS CORNER

Frank Wollenhaupt

The second annual convention of the National Cambridge Collectors, Inc. is now past history, but what great history!

I have never seen the quantity or quality of Cambridge Glass in my life that I saw there, I am sure that everyone could find a piece of Cambridge to fit in their collection. The only problem was deciding which one to take home!

I enjoyed meeting several members of the club that I had corresponded with throughout the past year.

To give you a run down on some of the items that were at the show, several pieces of Everglade including a Carmen two-lite candelstick and several buffalo plates. There was a milk glass swan punch bowl with cups to match, needless to say that went home with someone. There were several Near Cut punch bowls and a couple of Ram's head bowls with candelsticks. For the nude collectors there was a rainbow of colors, Topaz, Moonlight Blue, Heatherbloom and Carmen, plain or crackel. There were even nudes with sterling overlay, signed Rockwell. The ugliest piece at the show had to be an Elk's tooth candy container. It was so ugly that I would have liked to own it. If you want rare and odd what about a piece of Caprice in a light lavender opaque. I do not know if you would term the color violet but it looked very close to it.

The display this year was different and thought provoking. Could we hear some comments from the members?

Mr. Eugene P. Henn, Sr. can certainly be called Mr. Cambridge. Mr. Henn spent quite a bit of time at the show talking to members of the club relating stories about Cambridge Glass. He really made Cambridge Glass history come alive.

TOUCH OF HISTORY

Jack and Sue Rettig

The January 11, 1915 ad compliments last month's article and shows the new "Community Colonial" plus the variety of pharmaceutical, bar ware and novelties. Also notice the specialty of private mold work.

The February 1, 1915 ad shows some of the decorated and cut ware. Look closely and you will see the etched goblet in the upper right hand corner of the ad is not the same as the "Marjorie" etching shown in the May 22, 1922 ad.

The ads of May 8, and July 31, 1922 show the many sizes and versatility of the flower blocks we discussed in last month's article.

ADS FROM: CHINA, GLASS AND LAMPS

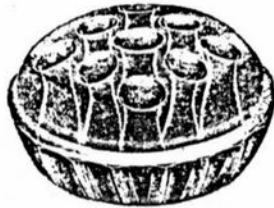
CAMBRIDGE, OHIO.



July 31, 1922

The Cambridge Glass Co.

CAMBRIDGE, OHIO, U. S. A.



Patented

2899
Flower
Blocks

Our blocks are the best made, giving more openings to each size. Made in Crystal and Ebony.

This is a stock item with all first class Retailers and Jobbers, made in sizes from 2 1/4 to 6 inches in diameter.

Write for price list and discounts.

January 11, 1915

"CAMBRIDGE CRYSTAL"

Lead Blown Ware

"Nearcut" and "Community Colonial"

Tableware

The Product of the Most Modern Equipment and Careful Manufacturing Methods

OUR display of new lines in Room 728 at the Fort Pitt Hotel, Pittsburg, will interest progressive buyers. Exhibit in charge of W. C. McCartney and L. S. Crain.

Our goods are made to supply the wants of customers who demand quality ware. Utility and artistic merit are combined with unexcelled color and finish. The variety of goods manufactured by us enables us to supply all departments without split shipments.

Lead Blown Stemware and Tumblers, (decorated and cut) Druggists' and Chemists' Glassware, Tableware, Pressed Bar Ware, Lamps, Show Jars, Novelties. Private Mold Work a specialty.

Cambridge Glass Co.

CAMBRIDGE, OHIO

New York City Branch Office, 90 West Broadway

THE CAMBRIDGE GLASS CO.

Cambridge, Ohio, U. S. A.

May 8, 1922



Great effects can be had with only a few Flowers, when placed in our Flower Blocks.

They are made in all sizes.

You will be interested in our Flower Bowls, in correct shapes, with and without stands. Azurite Blue, Ebony, Crystal, Cut, Etched and Decorated.

May 22, 1922

The Cambridge Glass Co.

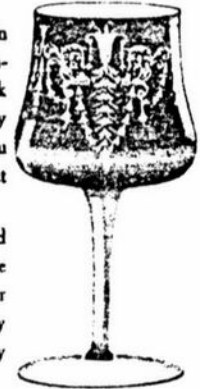
CAMBRIDGE, OHIO, U. S. A.



"Marjorie"

Stock patterns in Deep Plate Etched Glass, work for you every day of the year if you have the correct ones.

Marjorie and Cleo when once started have never failed and they have many friends.



"Cleo"

The Cambridge Glass Co.

CAMBRIDGE, OHIO, U. S. A.



OLD ENGLISH STRATFORD

May 1, 1922

A most wonderful production in design, weight and color. Brilliant as Rock Crystal.

This Bowl is about 10 inches in diameter and fitted to Ebony stand.

Unequaled for a special sale.

National Cambridge Collectors, Inc.
Comparative Balance Sheets
At March 31, 1975 and 1974

	March 31, <u>1975</u>	March 31, <u>1974</u>
Assets		
Cash:		
Operating Funds	\$ 341.46	\$ 16.27
Restricted, Museum Fund	<u>699.80</u>	<u>-0-</u>
	1,041.26	16.27
Receivables	36.75	74.00
Other Assets	<u>47.73</u>	<u>57.48</u>
Total Assets	<u>\$ 1,125.74</u>	<u>\$ 147.75</u>
Liabilities and Members' Equity		
Accounts Payable	\$ 650.32	\$ 220.53
Deferred Membership Dues	<u>937.34</u>	<u>555.33</u>
Total Liabilities	<u>1,587.66</u>	<u>775.86</u>
Members' Equity:		
Operating Fund (Deficit)	(1,161.72)	(628.11)
Museum Fund	<u>699.80</u>	<u>-0-</u>
Total Members' Equity	<u>(461.92)</u>	<u>(628.11)</u>
Total Liabilities and Members' Equity	<u>\$ 1,125.74</u>	<u>\$ 147.75</u>

Audited and found reasonable May 1, 1975.

Budget and Finance Committee

[Signature Removed]

William C. Smith, Chairman

[Signature Removed]

David B. Rankin

[Signature Removed]

Susan T. Rankin

IS IT CAMBRIDGE ?

by David McFadden

We hope we will be forgiven for the lack of an article on reproductions this month. It takes time to gather all the information and due to the convention activities, time has been at a premium recently.

In place of our article, we are printing part of an article which appeared in a trade journal in 1926.....

SeaShell

Made in Sea Shell Coral, Carmen, Amber.
Royal Blue, Forest Green and Amethyst

--From a Cambridge Catalog of the mid 1930's.

National Cambridge Collectors, Inc.
Statement of Income and Expenses
For the Years Ended March 31, 1975 and 1974

	<u>March 31,</u> <u>1975</u>	<u>March 31,</u> <u>1974</u>
Income:		
Prorated Membership Dues	\$ 2,206.99	\$ 1,748.67
Advertising	233.90	236.70
Other	156.68	10.78
Total Income	<u>2,597.57</u>	<u>1,996.15</u>
Expenses:		
Advertising	119.66	150.20
Office Supplies	239.34	314.90
Postage and Box Rental	323.18	238.86
Printing Crystal Ball	2,328.30	1,847.10
Other	120.70	73.20
Total Expenses	<u>3,131.18</u>	<u>2,624.26</u>
Operating Loss	(533.61)	(628.11)
Beginning Operating Fund Balance (Deficit)	<u>(628.11)</u>	<u>-0-</u>
Ending Operating Fund Balance (Deficit)	<u>\$(1,161.72)</u>	<u>\$(628.11)</u>

National Cambridge Collectors, Inc.
Museum Fund Project
All Cambridge Glass Auction
Year Ended March 31, 1975

Gross Receipts	\$ 6,153.00
Total Expenses	<u>5,513.20</u>
Net Income from Auction	639.80
Donation	<u>60.00</u>
Net Income to Museum Fund Account	\$ <u>699.80</u>

Convention Highlights

The Second Annual National Cambridge Collectors Convention got underway on May 2 with Registration and Convention Headquarters being located at the Cambridge Holiday Inn. Registration was handled by members of the Cambridge Squares Study group with assistance from the Hokey Pokey Study group.

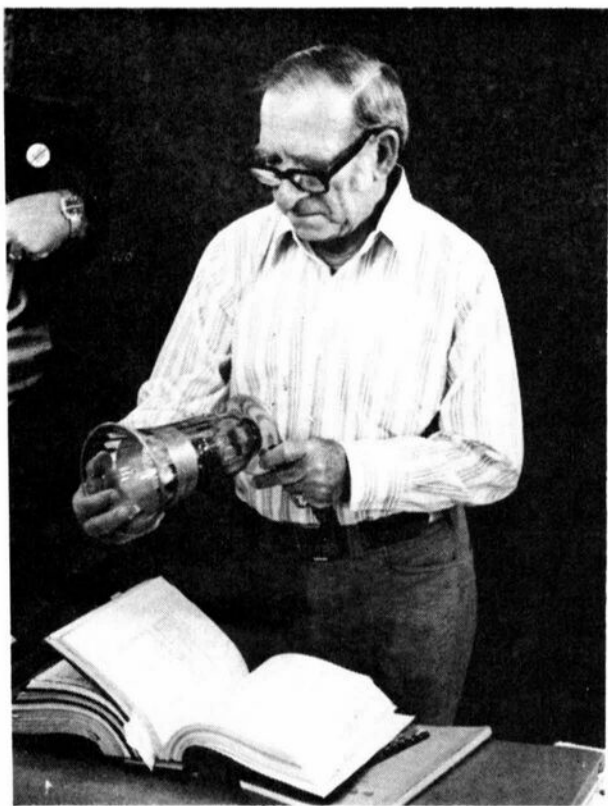
The first thing on the agenda was a preview showing of Cambridge Glass at the Armory. This was well attended and members stayed all evening looking, learning and purchasing.

Saturday morning, at the Convention Headquarters featured a Show and Tell



SUNDAY MORNING BREAKFAST

were free to members. One was a room where many pieces of Cambridge glass was grouped together with information concerning that particular pattern. This room was very educational to both the new and old members. Another fea-



EUGENE P. HENN
Checking a piece of Cambridge

session following the breakfast. Guest panel members were Eugene P. Henn of Huntsville, Alabama and Orva Heissen - buttel of Washington, D. C.

Members then spent most of their day attending the Antique Show and Sale at the Armory. Two outstanding features



EDUCATIONAL DISPLAY OF CAMBRIDGE GLASS

Patterns

by Ruth Forsythe

ROCK CRYSTAL
Lily of the Valley

1059

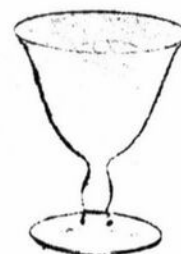
LILY OF THE VALLEY, a fragrant garden flower with beautiful bell-shaped flowers that hang down in a long cluster along a slender stem. Because of its delightful fragrances, a French toilet water called eau d'or is made from the flowers.

The Cambridge Glass Company could not capture the fragrance in glass, but they did a beautiful job with capturing the artistic bell-shaped flowers and oblong leaves, all held together with slender stems.

Ref: Cambridge Glass Company Catalogue



3700
Low Esherbet



3700
Cocktail



3790
Wine



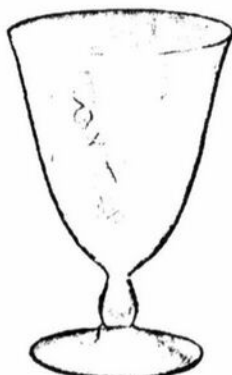
3700
Claret



3700
Oyster Cocktail



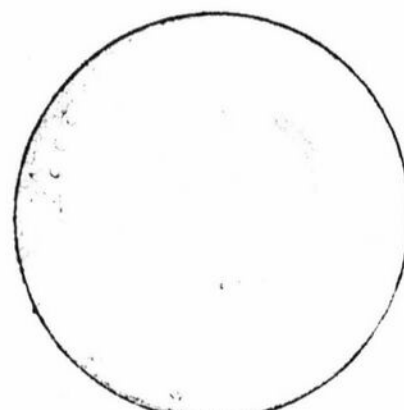
3700
Cordial



3790
12 oz. Fld. Ice Tea



3700
5 oz. Fld. Tumbler



555
7 1/2 in. Salad Plate

National Cambridge Collectors, Inc.
Project Committee Report
For the Year Ended May 4, 1975

Since our last annual meeting in May, 1974 the Project Committee has conducted three projects beginning with the First All-Cambridge Glass Auction on August 25, 1974. The auction met with much favor and success. Net proceeds to the club including donations were \$699.80. This amount has been designated by the board of directors for the Museum Fund.

At the quarterly meeting in February, 1975, we conducted an educational clinic on Nearcut. As approved by the board of directors for all future club functions, a donation jar was present. At this clinic, which was open to the public, the club received \$40.05 in donations and gained seven new members.

Due to the similarity to the clinic concept the project committee is conducting this year's display of Cambridge Glass at the convention. Expenses for this display are \$100.00 for insurance. The donation jar is in the display room and donations received through Saturday night, May 3, 1975, were \$21.00. A supplemental report on donations will be delivered to the board of directors at the conclusion of the convention.

One additional project has been approved and scheduled. The Second All-Cambridge Glass Auction will be held August 24, 1975 in conjunction with the next quarterly meeting which will be held August 23, 1975.

UNCLE BEN'S ANTIQUES
Ben & Shirley Smith

MURPHY & DOT ANTIQUES
Murphy & Dorothy Tarquinio

TO OUR MANY FRIENDS

WE WILL BE AT HEARTLAND FLEA MARKET
On Route 79

BETWEEN HEATH AND HEBRON

SATURDAY, JUNE 14 & SUNDAY, JUNE 15

We will have lots of Cambridge-Heisey

THE RARE THE UNUSUAL MANY COLORS

Project Committee

[Signature Removed]

David B. Rankin, Chairman

NATIONAL CAMBRIDGE



COLLECTORS INC.

I have the following items up for Mail Auction Bids. All bids are to be received by July 1, 1975. Please send S. A. S. E. with your bids. I reserve the right to reject any bids that are unreasonable. All pieces are mint unless otherwise stated.

LOT #	COLOR	SIZE	ITEM	REFERENCE
1	Azurite	10"	Bowl	W 1 - 105
2	Peach-Blo	9½"	Doric Column Candlestick-Pr.	W 1 - 100
3	Apple Green	8¼"		
1	Azurite	10"	Bowl	W 1 - 105
2	Peach-Blo	9½"	Doric Column Candlesticks - Pr.	W 1 - 100
3	Apple Green	8¼"	Centennial Bowl & under plate	B 49-3-1
4	Azurite	10"	Bowl	W 1 - 105
5	Crystal	3"	4 - 3-toed ashtray Seashell	B 35-1-1
6	Crystal		Cheese & Cracker (#731 etching) chip on inside rim	W 1 - 85 and 87
7	Moonlight	10"	Bowl (#704 etching) signed	W 1 - 87
8	Pink	8 3/4"	2-Handled relish (Hambone) signed	
9	Pink	5½"	Decagon Bon-Bon (unknown etching) signed	W 1 - 85
10	Azurite	10 5/8"	Bowl (gold on flared bottom)	W 1 - 105
11	Ebony		2-Handled Bon-Bon signed	
12	Crystal	8"	Seagull flower frog	B 41-2-1
13	Crystal	8½"	Asparagus Plate	W 2-38
14	Crystal	6"	Caprice footed Bowl # 105	W 2-34
15	Crystal		Rosepoint 3-section gadroon relish (like B 33-2-1)	
16	Pink		4 Goblets (etched Cleo)	
17	Amber		Puff Box w/decorated celloloid lid Signed	B 30-2-1A
18	Crown Tuscan	10"	Flying Nude Gold & enameled decora- tion-signed A. B. in gold	B 9-2-2
19	Crown Tuscan	9"	3-toed bowl seashell pattern signed	B 16-4-3

STEPHEN AND SUSAN ANTIQUES

SPECIALIZE IN GLASSWARE

145 Chestnut Lane #117

RICHMOND HEIGHTS, OHIO 44143

The Board of Directors and Membership of the NATIONAL CAMBRIDGE COLLECTORS CLUB wish to extend to Charles Upton, promoter of the Cambridge Antique Show and Sale, a sincere "THANK YOU" for the courtesies and co-operation extended to this club during its recent Convention. The extent of those considerations greatly enhanced the Convention Activities.

I want to extend my thanks to all of the members that have written to me in the past year. This will be the last Collector's Corner. I think that our monthly newsletter has outgrown this column and it's best to make way for more informative articles. I will be writing Questions and Answers so I'm still begging for mail.

Buy Quality,
Buy Cambridge

Frank Wollenhaupt

AUCTION NEWS


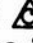

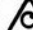
The second annual all Cambridge Glass Auction sponsored by The National Cambridge Collectors, Inc. will be held Sunday, August 24, 1975 in Cambridge, Ohio. Donations are now being accepted if you have any Cambridge Glass to donate please notify us by mail as soon as possible, (National Cambridge Collectors, Inc., P.O. Box 416, Cambridge, Ohio). The first donated piece is a crystal, Everglade, swan plate. Consignments will be accepted, additional information concerning these sale pieces will appear in the next Crystal Ball. The quarterly meeting will be held in conjunction with the club sponsored auction. The meeting will take place Saturday, August 23, 1975. More details will be furnished next month but be sure and mark those dates on your calendar. Why not make this another Cambridge Glass week-end : Plan to attend both events and support YOUR club!

TRADEMARKS - from page 4

The forth and final known version, figure 5, measures 11mm X 19mm. The modification to this format came with the addition of the words HAND MADE after GENUINE at the top of the oval. In the trade advertising, the earliest occurrence was in April, 1932.

Usage of this label continued through 1937. In January, 1938, an article in a trade publication announced to the glass trade that Cambridge had adopted a new paper label. Discontinuance of the label at this time was confirmed in both trade and national advertising. Our date range is, therefore, 1932-1937.

To recap these four labels:

- 1) CAMBRIDGE  (figure 2) 1927-?
- 2) CAMBRIDGE  MADE IN U. S. A. (figure 3) ?-1930
- 3) GENUINE CAMBRIDGE  (figure 4) 1930-1932
- 4) GENUINE HAND MADE CAMBRIDGE  (figure 5) 1932-1937

Next month  stamped in the glass.

THE COLLECTIQUE SHOP
4003 Old Columbus Road
Springfield, Ohio--45502
Phone-513-323-3888

CROWN TUSCON

Ivy Ball w/Ring Stem (B-16-1-3) --	\$ 40.00
Pair 3" Cornucopia (B-16-2-1&2) --	30.00
Seashell pattern 5" Bread & Butter Plate - decoration worn off (WC1-3-2-1) -----	14.00
Pencil Dog or Cigarette Holder	
Guaranteed Cambridge (B-41-1-10) -	25.00
Same as above in AMBER -----	15.00

EMERALD (Apple) GREEN

Figure Flower Holder 8½", #518 (Shape - McL-17 and B-41-2-9) ----	40.00
---	-------

MOONLIGHT BLUE

Figure Flower Holder - same as above -----	80.00
Caprice 7", #70, Candlesticks w/ prism and #65, 11", 2 hdl., 4 ftd., Oval Bowl (McL-2) -----	50.00
Caprice 6", 2 hdl., sq., Bonbon #154 (McL-3) -----	7.00
3", 3-toed Ashtray w/card holder (shape only B-46-3-1) -----	4.00
Same as above in CRYSTAL -----	3.50

CRYSTAL

8 Cascade #9, 12 oz. ftd. Tumblers (W2-36) -----	ea. 6.00
5 Cascade #1, Goblets (W2-36)-	ea. 7.00
4 Mt. Vernon #2, 6½ oz. Tall Sherbets (W1-82) -----	ea. 5.00
Mt. Vernon Centerpiece Flip Bown (N.R.) -----	15.00
Corinth 12", 3 pt., Celery & Relish #3900/126 (McL-40) -----	10.00
Corinth 5½" Comport #3900/136 (McL-40) -----	8.00
Candy Container Mug, 3½ oz., no lid or trim (WC2-15-3-3) -----	15.00

PISTACHIO

3", 3-toed Ash Tray (B-35-1-1) ---	8.00
Same as above in MOONLIGHT BLUE --	4.00

REFERENCES

Bennett Color Book -----	B-Plate-Row-No.
Welker Color Book I -----	WC1-Plate-Row-No.
Welker Color Book II -----	WC2-Plate-Row-No.
Welker Reprint I -----	W1-Page
Welker Reprint II -----	W2-Page
No Available Reference -----	N.R.

WE PAY ALL POSTAGE AND INSURANCE !!!

DEALERS



DIRECTORY

<p>THE VICTORIAN SHOPPE 623 Wheeling Ave. Cambridge, O. 43725 Cambridge Glassware 614-432-2515 614-439-2344</p>	<p>COLLECTOR'S HAVEN 135 Cynthia Street Heath, Ohio 43055 Specializing in CAMBRIDGE 614-522-1635 GLASS</p>	<p>HERITAGE ANTIQUES Rt. 5 Cambridge, Ohio W.8th. St. Rd. (Co. Rd. 33) Left at R. R. track 614-439-3241</p>
<p>ANTIQUES by E. H. & W. 22 E. Home Street Westerville, Ohio Hours-12 to 5 Thur.-Sun.</p>	<p>HOBBY HOUSE ANTIQUES Rt. 1 Cambridge, Ohio Rt. 209 West from Cambridge to 658 - North 1 1/2 miles 614-432-6971 Frank & Lena</p>	<p>ANTIQUE ALLEY 24815 Broadway Bedford, Ohio 44146 Cambridge Glass-Ryl.Doulton 216-232-7739 Marie Spagnola</p>
<p>YOU CAN ADVERTISE YOUR ANTIQUE SHOP HERE 1 inch - \$6.00 for 6 months</p>		

NATIONAL CAMBRIDGE COLLECTORS, Inc.
P. O. Box 416
Cambridge, Ohio 43725
Address Correction Requested