

Cambridge



Crystal Ball

ISSUE No. 12

APRIL 1974

Published monthly by the NATIONAL CAMBRIDGE COLLECTORS, Inc.
To encourage and to report the discovery of the elegant and boundless product
of the Cambridge Glass Company, Cambridge, Ohio



CAMBRIDGE CRYSTAL BALL
P. O. Box 416
Cambridge, Ohio 43725
Official Publication of

NATIONAL CAMBRIDGE COLLECTORS, Inc.

President Charles Upton
Vice President. . . . Ruth Forsythe
Secretary Richard Pavlov
Treasurer John Wolfe

CLASSIFIED ADVERTISING RATES

5¢ per word - \$1.00 minimum

We cannot mix type sizes in classified Ads. Abbreviations and initials will count as words. Payment in full must accompany all ads.

DISPLAY ADVERTISING RATES

	Members	Non-Members
1/8 page . . .	\$ 4.00	\$ 6.00
1/4 page . . .	7.00	10.00
1/2 page . . .	12.00	18.00
3/4 page . . .	17.00	25.00
full page . .	22.00	33.00

Advertising copy must be in our hands by the 15th. of the month to assure publication in that month's issue. Advertisements containing reproductions will not knowingly be accepted unless clearly stated.

Cambridge Crystal Ball assumes no responsibility for items advertised and will not be responsible for errors in price description or other information.

Ads should be sent to:

DALE SNODE
Route 6
Cambridge, Ohio
43725
(614) 432-4619

NOTIFY US IMMEDIATELY OF ANY CHANGE OF ADDRESS

Address all letters concerning membership to the attention of:

JOHN WOLFE
P.O. Box 416
Cambridge, Ohio 43725

SASE - When requesting information, please send a Self Addressed Stamped Envelope.

FROM THE DESK OF -

President Charles Upton

HELLO AGAIN! It doesn't seem like this is the twelfth issue. The club has been in existence for a year now and we did not reach the goal I set for the first year. I predicted 500 members the first year. We have 277 members as of March 25. I will have to adjust my prediction now to 325.

I would like to thank the North Central Cambridge Collectors for the article in last month's issue. This is the material that is needed. This publication can become, not only interesting, but helpful to many other clubs and study groups. If you have a club or study group, why don't you make a motion at your next meeting, to appoint a news reporter, who will have the responsibility of reporting your club activities each month? It will promote your group and will let others know what is happening around the country.

The 1974 National Cambridge Collectors Commemorative Plate will be ready for the Convention and will go on sale in the National Cambridge Collectors Exhibit room at the show. The color is "Antique Blue", which is close to the Cambridge "Ritz Blue". A new plunger was required for this year's plate and we have arranged for the original plunger, which is the part of the mold that makes the center of the plate with the Cambridge seal on it, to be retained for our museum and the new plunger will be designed so it can be changed each year.

This is the last issue prior to the Convention and Show. If you are planning to attend the activities or show and need to make overnight reservations, may I suggest that there is no time like right now to take care of that. The list of motels is published, again in this issue, for your convenience.

For those of you that will not be able to attend the activities, we will try to have a good coverage for you of all the activities during the weekend, along with pictures of the most interesting parts. I know it will be a week-end to remember.

Until then - HAPPY HUNTING!

COLLECTORS CORNER

by Robert Coyle
441 Mt. Vernon Road
Newark, Ohio 43055

Hold onto your hats and balance your checkbooks - the Cambridge Antique Show and Sale is almost here. How about a sneak preview on some of the fabulous Cambridge we hear is in store for you. If you hadn't planned to attend, maybe some of these items will help change your mind.

Like for instance.....A Budha Lamp, a Dianthus Pink covered Turkey, a pair of Crystal Lion Bookends, not to mention two Monkey Lamps - one in Green and one in Brown.

Is everyone's mouth watering? If not, try a piece of Carmen Japonica or if that doesn't strike your fancy, we could offer you.....a pair of Lady Leg Bookends, a Mandarin Gold water pitcher with Gold Encrusted Etching, Nude Stem Goblets with Crackle bowls, Willow Blue Stemware, Ram's Head Bowls and Candlesticks in several colors, signed Sterling Silver Overlay, Milk Blue, Flower Frogs in every category, including one in Ivory.

And so that Dianthus Pink Turkey doesn't get lonely, how about one in Mandarin Gold. This won't be New Orleans, but you might look for several pieces of Mardi Gras, a statue disguised in the form of an Oriental Girl, Near-Cut Carnival pieces..... you read last month how rare these were. We expect an abundance of Rose Point, so bring along your list and we may just be able to fill your order to complete your dinner service. Or maybe you prefer, Chantilly, Wildflower, or Portia. Or something really elegant like Talisman Rose, Mag-nolia, or Harvest. Or if you like, something more novel, we offer the "Streaking Nude Lady" expected in almost every color from Cordials to Goblets.

Keep your eye open for Decanter Sets in Royal Blue, Amber, and Carmen Compotes in Crown Tuscan, Carmen, Royal Blue and many items in Farber Ware holders. I'm sure I have left out several thousand items, but this should do for a start. You will just have to come spend the weekend with us in Cambridge and see the rest. We promise you won't be sorry.....maybe drool a little, but not sorry.
FLASH!!!!!!

We don't promise these items to be for sale, but we do expect in our display at the Antique Show, a Frosted Dianthus Pink Mannequin.....we have seen it and it is really SUPER!!!! I almost forgot.....a Carmen Flying Lady Bowl. These are just two of the items our members are bringing for the Display so you can see we have a fantastic start. Let's make it a Fantastic Convention.....with your presence.

See you in Cambridge!

Announcing

THE

SECOND EDITION OF THE Annual

NATIONAL CAMBRIDGE COLLECTORS

Commemorative Plate

ONLY 2000 ISSUED

8½" "Antique Blue" Caprice
Plate with Cambridge Glass
Co. seal and our organi-
zational name in center.

Dated and marked with
Imperial Glass Co. hallmark

\$6.00 each
plus \$1.00 postage & handling

ORDER FROM

NATIONAL CAMBRIDGE COLLECTORS, Inc.
P. O. Box 146, Cambridge, Ohio
43725

Patterns

by Ruth Forsythe

No. 4072 CUTTING *

Spring!!! Our fancies lightly turn to thoughts of love for exquisite Cambridge glass.

The Cambridge Glass Company was responsible for many patterns which were cut or etched on clear spark

The Cambridge Glass Company was responsible for many patterns which were cut or etched on the clear sparkling crystal.

No. 4027 CUTTING pictured has beautiful simplicity in that the pattern is not complex and stands out as a distinct pattern rather than the pattern being lost in a maze of curlicues. A daisy, a swag and several verticle double headed spears; result, a pleasing cut pattern.

Cutting is done with rapidly revolving carborundum wheels of different sizes, or copper wheels supplied with a steady stream of emery dust and oil. Skilled workmen follow designs which have been placed before them or previously stenciled on the glass. With their wheels, they are able to cut any desired design much as an artist would draw a picture with a pencil.



No. 7516. 10 oz.
Goblet

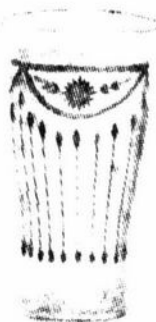


No. 7516. 5 oz.
Tall Footed Sherbet



No. 7516. 5 oz.
Low Footed Sherbet

4



No. 8858. 12 oz.
Tumbler



No. 8858. 9 oz.
Table Tumbler



No. 8858. 5 oz.
Tumbler

When the piece comes from the cutting room, the cuttings are gray and must be polished, either by buffing wheels or by immersing in a solution of hydrofluoric acid. The acid dissolves a portion of the surface, smoothing it out and giving a beautiful polished appearance. It is more satisfactory in many ways than the old style buffing process which, if not carefully done, causes spreading or pulling of the design.

* ref.: Cambridge Glass Co. Catalogue

We received a letter from Pat Spencer of Illinois and we quote in part. "Recently we saw a Cambridge Feather set consisting of a tray, toothpick, salt and pepper and cruet. All the pieces were marked Near-Cut except the toothpick and for some reason it did not have the appearance of the same good quality glass as the other pieces. My husband and I thought it looked new, but have never heard of any reproductions in this pattern. Do you have any information about this?"

For the pattern FEATHER, see Issue No. 1 of the CRYSTAL BALL dated May 1973.

We feel almost certain that Feather has not been reproduced. Also doubt if there are any molds available. The difference in the glass may have been that the toothpicks for the set were made from a different batch of glass. Not all pieces of Feather are marked, so no problem there.

As we all know, the first indication of any item being reproduced is that it starts showing up in quantity and everywhere. When anything like this happens, how about you "spies" out there reporting to your CRYSTAL BALL immediately.

Don't forget our Convention April 26, 27 and 28, 1974. Let's make it a memory.

NO. 4072 CUTTING.

TRADE
"Mearcut"
MARK



No. 4004. 5 in.
Comport



No. 2090. 5 in.
Jelly Comport



No. 5000. 7 in.
Footed Nappy



No. 2045. 8 in.
Footed Nappy



No. 152.
Marmalade
and Cover



No. 106. 8 oz.
Syrup and Cover



No. 0214. 7 oz.
Oil



No. 1917/8
Butter Tub
and Cover



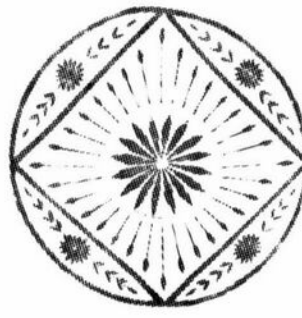
No. 1917/10. Sugar & Cream



No. 105. 53 oz.
Jug



No. 106. 66 oz.
Jug and Cover



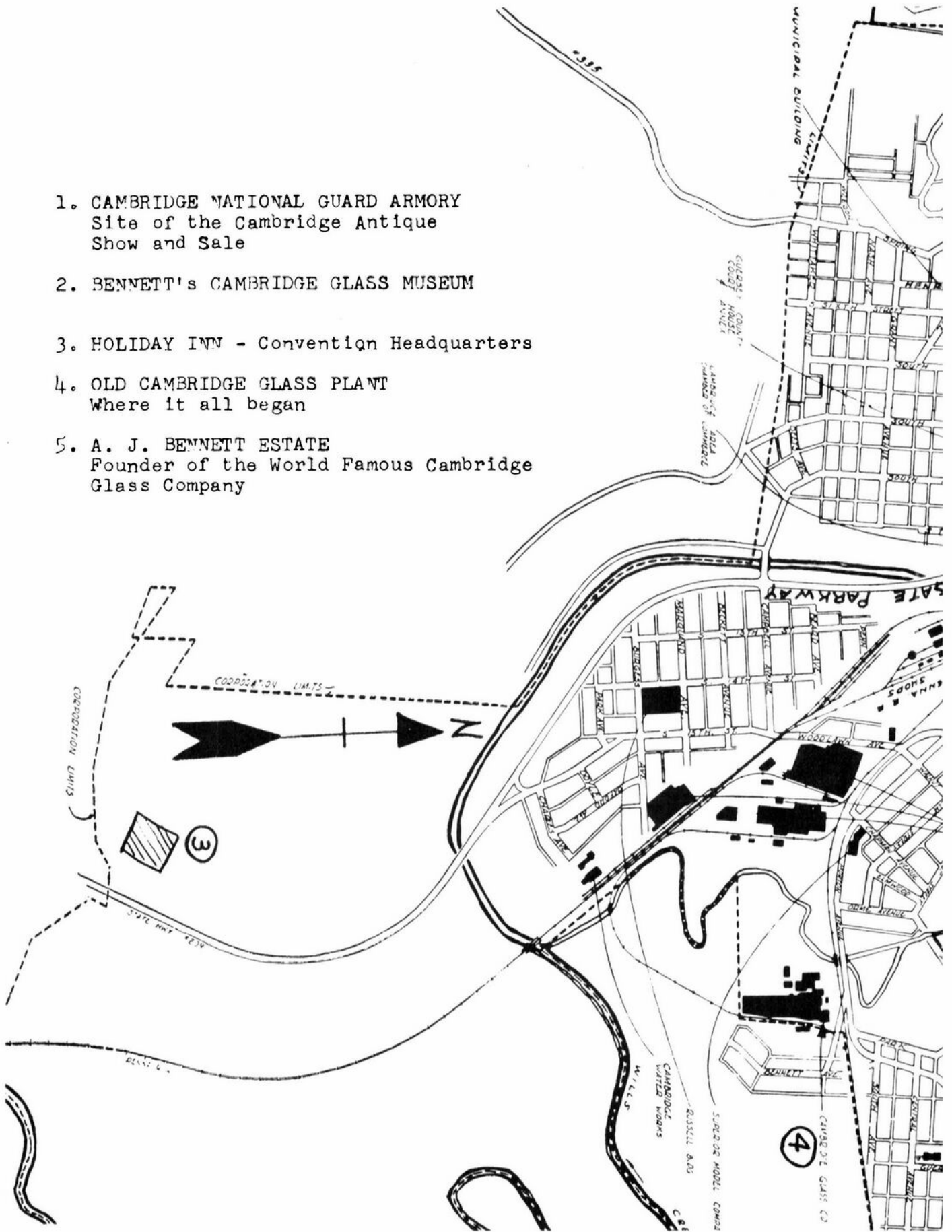
5

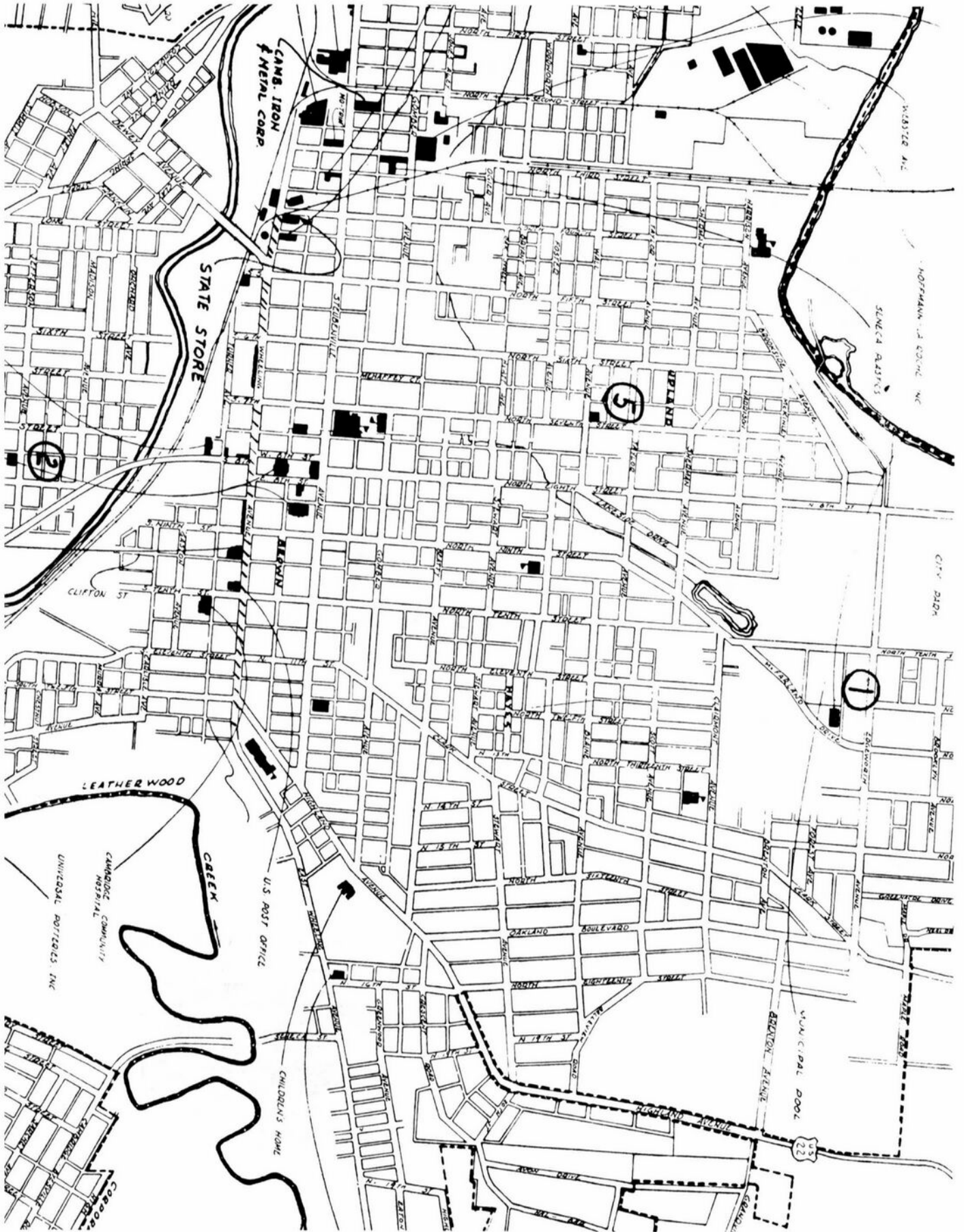
No. 1917/350. 6 in.
Plate



No. 106. 30 oz.
Jug and Cover

1. CAMBRIDGE NATIONAL GUARD ARMORY
Site of the Cambridge Antique Show and Sale
2. BENNETT's CAMBRIDGE GLASS MUSEUM
3. HOLIDAY INN - Convention Headquarters
4. OLD CAMBRIDGE GLASS PLANT
Where it all began
5. A. J. BENNETT ESTATE
Founder of the World Famous Cambridge Glass Company





ATTENTION ALL NATIONAL CAMBRIDGE COLLECTORS

Dear Members;

The National Officers and Board of Directors of National Cambridge Collectors, Inc. takes great pleasure in extending this invitation for your participation in the First Annual Convention of National Cambridge Collectors, Inc.

This Convention will take place on April 26, 27, 28, 1974 in Cambridge, Ohio during the Annual Cambridge Antique Show. The Convention headquarters will be the Holiday Inn, Cambridge, Ohio.

We strongly urge all of you to attend as many functions as possible, for many hours of hard work are being spent to make this weekend a memorable and educational one so as to further the enlightenment and interest in Cambridge Glass for all of our members.

Do not hesitate to invite a friend or two, as we encourage all persons interested in Cambridge Glass to attend these functions. Hopefully they could become a future member of National Cambridge Collectors, Inc.

We are looking forward to meeting you at the Convention.

Sincerely yours,



Robert Coyle
Convention Chairman

NATIONAL CAMBRIDGE



COLLECTORS INC.

FIRST ANNUAL CONVENTION
NATIONAL CAMBRIDGE COLLECTORS, Inc.
Cambridge, Ohio
April 26, 27, 28, 1974

SCHEDULE OF EVENTS

FRIDAY, APRIL 26

- 2:00 PM - 8:00 PM - Registration - Holiday Inn
Room to be announced at Hotel
- 9:00 PM - 11:00 PM - Tour of Bennett's Cambridge Glass Museum
50¢ per person

SATURDAY, APRIL 27

- 8:00 AM - 12:00 Noon - Registration at Holiday Inn
- 8:30 AM - - - - "Get Acquainted" Continental Breakfast
Holiday Inn - \$1.75 per person
- 10:00 AM - 9:30 PM - Antique Show & Sale
National Guard Armory
McFarland Drive and North 10th. St.
- 9:30 PM - - - - National Convention Banquet
Holiday Inn - Buffett Dinner
\$6.00 per person
Guest Speaker - LUCILLE J. KENNEDY
Sales Manager
Imperial Glass Corp.

SUNDAY, APRIL 28

- 8:30 AM - - - - National Convention Meeting
Holiday Inn
Buffett Breakfast - \$3.25 per person
Business Meeting - Announcement of New
Officers
"Show & Tell" - Panel Discussion
- 12:00 noon - 6:00 PM - Antique Show & Sale
National Guard Armory

COMPLETE PACKAGE PRICE - \$11.00 per person

Each registration includes a discount ticket worth 25¢ toward your admission to the 7th. Annual Cambridge Antique Show. (Ticket good for both days.)

DEADLINE - APRIL 8, 1974 - Tickets to be picked up at Registration

SEVENTH ANNUAL
CAMBRIDGE, OHIO

Antique Show and Sale

Presented in the National Guard Armory

April 27, 10:00 a.m.—9:30 p.m. April 29, Noon - 6:00 p.m.

Charles A. Upton, Director

Food by Cambridge High School Band Boosters

* * * EXHIBITORS * * *

- | | |
|--|--|
| LOREN & VIRGINIA YEAKLEY, Newark, Ohio | THE GLASS SHOP, Akron, Ohio |
| ELYSIA FARM ANTIQUES, Faun Grove, Pennsylvania | BILL & PHYLLIS SMITH - JACK & SUE RETTIG,
Springfield, Ohio |
| MARGARET LANE ANTIQUES, New Concord, Ohio | THE CORNER CUPBOARD, Glenville, West Virginia |
| FRAN-ES ANTIQUES, Griffith, Indiana | AH COLLECTABLES & ANTIQUES, Thornville, Ohio |
| MARGO'S ANTIQUES, Allen Park, Michigan | ROBERT H. COYLE, Newark, Ohio |
| CAMPBELL'S ANTIQUES & CURIOS, Seneca-ville, Ohio | RUTH A. FORSYTHE, Plain City, Ohio |
| PATTI & ROLAND GRUENSELDER, Akron, Ohio | FRANK & VICENTE WOLLENHAUPT - DAVE & SUE RANK-
IN, Dayton, Ohio |
| HOFFMAN'S ANTIQUES, Newark, Ohio | HAROLD & JUDY'S ANTIQUES, Cambridge, Ohio |
| MRS. VANCE BARTLETT, Reynoldsberg, Ohio | THE BROWSE AROUND SHOP, Warton, West Virginia |
| LYDIA'S ANTIQUES, Steubenville, Ohio | THE BLUE NOOK ANTIQUES, Dublin, Ohio |
| JOY & DAVE'S ANTIQUES, Galena, Ohio | HERITAGE HOUSE ANTIQUES, Cambridge, Ohio |
| PAVLOV'S ANTIQUES, Cambridge, Ohio | PAULE HENDERSON, Iselin, New Jersey |
| MARG & RAY'S ANTIQUES, Newark, Ohio | PORTER'S, Cambridge, Ohio |
| COLLECTOR'S HAVEN, Newark, Ohio | OLDEN THINGS, Ross, Ohio |
| VESUVIUS TRAIL ANTIQUES, Ironton, Ohio | GASLIGHT ANTIQUES, Frechold, New Jersey |
| ANTIQUUE ALLEY, Bedford, Ohio | GARDNER'S ANTIQUES, Columbus, Ohio |
| THE HEISCHMAN'S, Westerville, Ohio | |
| BROCK'S ANTIQUES, Norwich, Ohio | |
| GOLDSBERRY ANTIQUES, Kalamazoo, Michigan | |

Visit the special exhibit, free of charge, of Cambridge Glass in the National Cambridge Collectors room at the entrance of the Armory and see the second issue of the National Cambridge Collectors Commemorative Plate. The 1974 Commemorative Plate is on sale here for the first time for \$6.00. Membership will be accepted in the National Cambridge Collectors, Inc. This organization is dedicated to the preservation and study of Cambridge Glass. A special exhibit of Hat Pins and Hat Pin Holders, belonging to Col. Max Cater is also on display for your enjoyment.

NATIONAL CAMBRIDGE COLLECTORS INC.

Charles Upton, President
Ruth Forsythe, Vice-President

Dick Pavlov, Secretary
John Wolfe, Treasurer

APPLICATION FOR MEMBERSHIP

_____ Member with Voting Rights -- \$10.00 yearly dues

_____ Each additional household member (must be 12 or over)
\$3.00 yearly dues -- member with voting rights

Please include SASE (self-addressed stamped envelope if you wish additional information.)

NAME _____
(Please Print)

STREET _____

CITY _____ STATE _____ ZIP _____

Make checks payable to:

National Cambridge Collectors, Inc.
P. O. Box 121
Cambridge, Ohio 43725

A non-profit organization.

Benefits of the club will be a newsletter which will contain informative data on Cambridge glass; news of reproductions; a dealer directory; want and classified ads, along with articles on former Cambridge employers and many special articles of interest.

Purpose of the club is to establish a museum in the city of Cambridge or Guernsey County so collectors can enjoy and study the beautiful glassware.

- * EL RANCHO MOTEL, (AAA), 1 mile W. of Cambridge on US Rte. 40 & 22 (32 units)
1-614-432-2373
- * FAIRDALE MOTOR LODGE, (AAA), Exit #67 off IR-70, 1/2 mi. E. on Rte. # 22, (20
units) 1-614-432-2304
- * HOLIDAY INN, Exit SR 209 off IR-70, 1-614-432-7313, 1 mi. S. on SR 209
- * KNIGHTS INN, Exit SR 209 off IR-70, 1-614-432-6391
- * RAMADA INN, Exit SR 209 off IR-70, 1-614-432-5691
- * RED CARPET INN, Exit SR 209 off IR-70, 1-614-432-2185
- * SPIRIT OF 76 INNS, Exit SR 209 off IR-70, 1-614-439-3581
- * TRAVELODGE, Exit SR 209 off IR-70, 1-614-432-7375

MOTELS

ROBERT TIPPENS
5237 Ware Apt A
Scott AFB, Illinois 62225

"Casa de Madrid"

FOR SALE

1. Moonlight Blue 10 oz. Goblets
(3) w/No. 3103, Stem like Ivy Ball
#1066. one inch vertical Optic.

\$5.00 ea.

WANTED - Send Firm Prices SASE

1. Amethyst 12 oz Tumblers, W3800-38
2. Moonlight Blue Figure Flower
Holder, 8 1/2 /13 inch w/bowl
3. Emerl W#3143/50, 13 oz Tumblers,
Gyro Optic
4. Crystal Rosepoint Cups/Saucers,
any style

NATIONAL CAMBRIDGE COLLECTORS, Inc.
P.O. Box 416
Cambridge, Ohio 43725

Address correction Requested

NOTICE

The 1974/75 dues are due in MAY

Membership \$10.00
Associate membership . . . \$ 3.00

Mail to: John Wolfe, Jr. Treas.
P. O. Box 416
Cambridge, Ohio
43725