

"Meatcut"
TRADE MARK

CATALOG
No. 2
OF
GLASSWARE

FOR THE...

Soda Fountain
Confectioner
AND
Baker



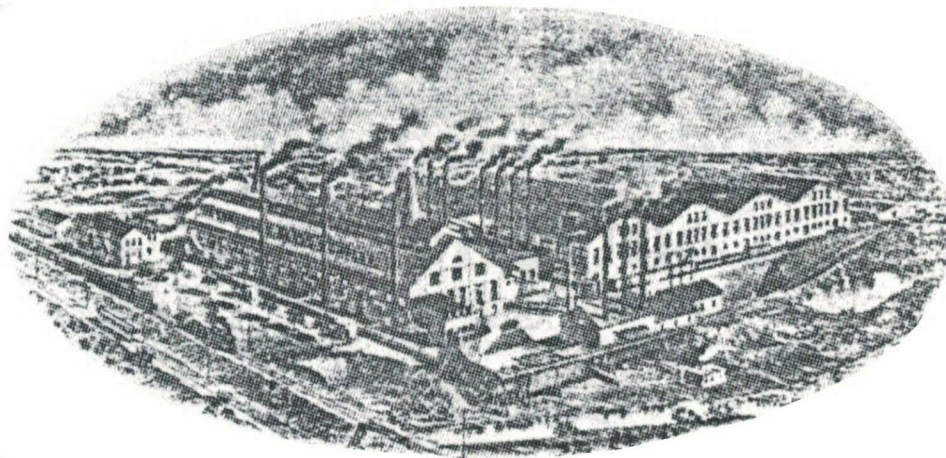
Manufactured by

The Cambridge Glass Company
Cambridge, Ohio

"Meatcut"
TRADE MARK

CATALOG No. 2

Soda Fountain, Confectioners' and Bakers' Supplies



MANUFACTURED BY

The Cambridge Glass Company

Cambridge, Ohio

Sample Rooms in all the Large Cities.

Private Mold Work a Specialty.

Our Catalogs of Druggists' Ware, Table Ware, Bar Goods and Lead Glass Blown Ware,
will be furnished on application.

Private Moulds, Etc.

WE ARE ESPECIALLY EQUIPPED for making and operating private molds. The advantages are many for making molds in a glass factory where experts know all the requirements for delivering smooth and perfect goods. When forwarding molds, models or samples to us, please prepay all charges. When ordering special designs a sample or drawing with explicit instructions should always accompany same. This will reduce the possibility of making errors and obviate lengthy correspondence. If you are not able to find your wants in this catalog, write us as we are large manufacturers and should be able to supply your requirements.

TERMS
 1/5 15 DAYS-30 DAYS NET
 Glassware—Sixty days net, 2 per cent. 30 days. Payment in funds at par in New York.
 Special Orders—Cash in advance.

PACKAGES

Charge for packages according to size are added to all invoices as follows: Boxes or Barrels, 50c each; Tierces, 55c to \$1.00 each; Casks, \$1.00 to \$5.00 each.

SHORTAGE

Discrepancies in count or in the ware ordered must be reported promptly on receipt of the goods. In doing so do not fail to state the name of the packer that appears on the head of the barrel, together with all other markings.

CLAIMS FOR MISSING PACKAGES should be referred to the transportation companies.

BREAKAGE, ETC.

All our goods are packed by experienced men and our responsibility ceases with the signing of the Bill of Lading by the R. R. company.



INDEX

	Page in Catalog		Page in Catalog
Bitter Bottles	8	Inverted Show Jars	25
Banana Split	15	Ice Cream Cone Holder.....	14
Candy Containers	12 & 25	Lemonade Jars	10
Candy Jars	9	Mugs—Toy	25
Candy Plates and Trays.....	6-7	Pitchers, Syrups	6
Cake and Cheese Covers.....	11	Salvers	11
Crushed Fruit Bowls.....	4-5	Shakers	8
Custards, Handled	15-16	Sherbets, Footed	13-14
Champagne—Special	24	Straw Holders	5
Display Jars	9, 10, & 25	Tumblers—Soda Water, Etc....	17-24
Graduates	8	Tumblers—Toy	25
Extractors, Lemon and Orange.....	8		

PRICE LIST

	Price Per Dozen	Original Quantity Dozen	Wt. Per Bbl.
Crushed Fruit Bowls.			
1—9 inch bowl and cover.....	6.50	1½	150
2—Crushed Fruit Bowl and Cover divided in 4 compartments.....	15.00	1	150
2630—Tall bowl and cover.....	3.60	2	140
2762½—Sanitary bowl and cover..... (This Bowl has rim to prevent liquid from collecting on cover seat).	6.00	1 11-12	140
2631—Tall bowl and cover.....	6.00	1½	130
Syrup Pitchers.			
2630—½ Gal., stuck handle.....	5.00	2	100
96—½ Gal., stuck handle.....	5.00	2	100
Straw Jars and Trays.			
2630—Straw Jar with cover.....	5.50	2	130
2630—Straw Jar without cover.....	4.40	2	110
2719—Straw Jar with cover.....	4.40	2	120
2750—Straw jar, no cover.....	2.25	5½	140
2762—Sanitary Straw Tray.....	9.00	2	140
Candy Trays and Plates.			
1—Tray, 6x8 inch.....	1.65	4	120
2—Tray, 5x8 inch.....	1.54	5	125
7—Tray, 5x8 inch.....	1.54	5	125
67—7 inch Candy Tray, unfinished.....	.90	7	120
67—8 inch Candy Tray, unfinished.....	1.00	6	125
67—9 inch Candy Tray, unfinished.....	1.20	5	125
67—7 inch Candy Tray, finished.....	1.10	7	120
67—8 inch Candy Tray, finished.....	1.30	6	125
67—9 inch Candy Tray, finished.....	1.50	5	125
120—Tray, 7 inch, unfinished.....	1.32	7	125
120—Tray, 7 inch, finished.....	1.60	7	125
120—Tray, 8 inch, unfinished.....	1.54	5	125
120—Tray, 8 inch, finished.....	2.00	5	120
120—9 in. Candy Tray, unfinished.....	2.70	2½	150
120—9 in. Candy Tray, finished.....	3.00	2½	150
130—Tray, 7 inch, unfinished.....	1.32	7	125
130—Tray, 7 inch, finished.....	1.60	7	125
130—Tray, 8 inch, unfinished.....	1.54	5	135
130—Tray, 8 inch, finished.....	2.00	5	135
2507—Tray, 7 inch, finished.....	1.60	7	125
2507—Tray, 7 inch, unfinished.....	1.32	7	125
2507—Tray, 8 inch, finished.....	2.00	5	125
2507—Tray, 8 inch, unfinished.....	1.54	5	125
2682—Tray, 7 inch, finished.....	1.80	5	125
2682—Tray, 8 inch, finished.....	2.50	5	125
2682—Tray, 9 inch, finished.....	3.00	3	125
2660—7 inch square plate, turned up edge.....	1.50	10	130
2660—Plate, 7x7 inch, unfinished.....	1.00	15	160
130—Plate, 7x7 inch, unfinished.....	1.00	13	160
2544—Plate, 5¼x7½ inch, unfinished.....	1.00	21	175
2545—Tray, 5¼x7½ inch, unfinished.....	1.32	7	140
Bitter Bottles, Shakers, Extractors.			
1116—Bitter bottle, no tubes.....	1.20	10	110
1115—Bitter bottle, no tubes.....	1.20	10	110
1125—Bitter bottle, no tubes.....	2.50	10	110
Short Tubes add 80c doz.; Long Tubes add \$1.00 doz.			
Etching name on Bitter Bottle add \$1.00 per doz.			
Engraving name on Bitter Bottle add \$1.50 per doz.			
1011—Shaker			
Spun Nickel Top Per Doz. 50c	Glass Top Spun Nickel Rig Per Doz. \$1.00	Glass Top Heavy Cast Nickie Ring Per Doz. \$1.25	Heavy Cast Nickie Top Per Doz. 90c
2630—Sugar Duster nickle plated caps.....	1.50	7	100
2630—Sugar Duster cast nickle caps.....	2.00	7	100
2674—Patented lemon extractors.....	1.40	16	200
2698—Patented lemon extractors.....	.84	18	160
2761—Grape Fruit or Orange extractor.....	3.00	4½	130
Graduates—Engraved. Guaranteed Correct.			
1 Ounce grad in ounces, packed one in a carton.....	1.80	30	120
2 Ounce grad in ounces, packed one in a carton.....	2.10	16	120
4 Ounce grad in ounces, packed one in a carton.....	2.60	7	100
8 Ounce grad in ounces, packed one in a carton.....	4.00	4½	80
12 Ounce grad in ounces, packed one in a carton.....	5.20	3	80
16 Ounce grad in ounces, packed one in a carton.....	6.20	2	100
32 Ounce grad in ounces, packed one in a carton.....	11.00	1	100

TABLET, CANDY AND SHOW JARS.

	Net Price Per Gross	Dozen in Bbl.	Wt. Per Bbl.
(Continued.)			
No. 2—Paris Jar—Square with Beveled Corners.			
2—4 Pound, ground stopper.....	26.00	1½	85
2—9 Pound, ground stopper.....	36.00	1	80
2—4 Pound, drop stopper.....	23.00	1½	85
2—9 Pound, drop stopper.....	31.00	1	80
No. 3—Paris Jar. Round.			
3—4 Pound, ground stopper.....	26.00	1½	85
3—5 Pound, ground stopper.....	28.25	1½	80
3—4 Pound, drop stopper.....	23.00	1½	80
3—5 Pound, drop stopper.....	25.25	1½	80
No. 4—Egyptian Jars.			
4—5 Pound, ground stopper.....	28.25	1½	80
4—2 Pound, ground stopper.....	20.50	3	85
No. 6 Jar.			
6—10 Pound, ground stopper.....	100.00	½	80
No. 7—Round Jar, Flanged Stopper.			
7—4 Pound.....	15.00	1 2-3	80
7—2 Pound.....	18.00	3	85
No. 8—Same Style as No. 1.			
8—2 Pound squat, ground stopper.....	20.50	2½	100
8—2 Pound squat, drop stopper.....	17.50	2½	100
No. 9—Octagon Jar.			
9—4 Pound, ground stopper.....	26.00	1½	80
9—4 Pound, drop stopper.....	23.00	1½	80
No. 11—Round Jar.			
11—Capacity 43 oz., drop stopper.....	1.25	2½	100
No. 12—Round Jar.			
13—Capacity 40 oz., drop stopper.....	1.25	3 1-6	100
No. 19—Tall Ring Jars and Cover.			
19—¼ Gallon.....	2.00	2	100
19—½ Gallon.....	2.50	1	100
19—¾ Gallon.....	3.10	1	100
19—1 Gallon.....	3.75	1	100
19—1½ Gallon.....	6.75	½	100
19—1¾ Gallon.....	9.00	½	100
No. 25—Squat Ring Jars and Covers.			
25—½ Gallon.....	2.50	1	100
25—¾ Gallon.....	3.10	1	100
25—1 Gallon.....	3.75	1	100
French Jar and Cover.			
1 Gallon.....	3.75	1	100
Show Jars.			
Roman Globe Jar, 1 Gallon.....	10.00	½	75
Venetian Jar, 1¼ Gallon.....	12.00	½	75
Show Jars have tops ground on.			
DISPLAY GLOBES—HAND MADE.			
No. 20—Round Globe and Cover.			
20—2 Gal., 10½ inches in diameter.....	5.05	1-3	55
20—2½ Gal., 11¼ inches in diameter.....	5.99	¼	55
20—3 Gal., 12 inches in diameter.....	6.25	¼	55
20—3½ Gal., 12½ inches in diameter.....	6.75	1-6	55
20—4 Gal., 13 inches in diameter.....	7.40	1-6	50
20—5 Gal., 14 inches in diameter.....	8.50	1-6	50
20—6 Gal., 14½ inches in diameter.....	12.20	1-6	50
These jars are fitted with rubber ring between cover and jar.			
CRATE PACKAGE CHARGE:			
2½ Gal. 1 in a crate, 20c.			
5 Gal. 1 in a crate, 23c.			
No. 25—Round Globe and Cover—Blown.			
25—½ Gal., 6½ inches in diameter.....	1.50	2	60
25—1 Gal., 8½ inches in diameter.....	2.00	1	50
No. 34—Footed Globe and Cover—Hand Made.			
34—2 Gal., 10½ inches in diameter.....	9.90	¼	50
34—2½ Gal., 11¼ inches in diameter.....	11.70	¼	50
34—3 Gal., 12 inches in diameter.....	12.90	1-6	50
34—3½ Gal., 12½ inches in diameter.....	14.10	1-6	50
34—4 Gal., 13 inches in diameter.....	15.90	1-6	50
34—5 Gal., 14 inches in diameter.....	23.10	1-6	50
These jars are fitted with rubber ring between cover and body.			
CRATE PACKAGE CHARGE:			
2½ Gal., 1 in a crate, 35c.			
LEMONADE JARS.			
No. 40—Low Shape—Hand Made.			
40—½ Gal., 7 in. in diameter, 4½ in. high.....	2.50	1½	60
40—1 Gal., 8 in. in diameter, 5 in. high.....	3.25	1	50
40—1½ Gal., 9 in. in diameter, 5½ in. high.....	4.00	2-3	50
40—2 Gal., 10 in. in diameter, 6¼ in. high.....	5.00	5-12	50
40—2½ Gal., 11 in. in diameter, 7 in. high.....	6.00	1-3	50
40—3 Gal., 12 in. in diameter, 7½ in. high.....	7.00	¼	50
40—3½ Gal., 13 in. in diameter, 7¾ in. high.....	8.50	¼	50
40—4 Gal., 14 in. in diameter, 8½ in. high.....	10.00	1-6	50
40—5 Gal., 15 in. in diameter, 8¾ in. high.....	12.00	1-6	50
40—7 Gal., 16 in. in diameter, 9¼ in. high.....	18.00	1-12	50
40—8 Gal., 17 in. in diameter, 9¾ in. high.....	25.00	1-6	50
40—10 Gal., 18 in. in diameter, 10½ in. high.....	33.00	1-12	50
No. 45—Tall Hand Made Lemonade Jars.			
45—½ Gal., 6 inch diameter.....	2.40	1½	65
45—1 Gal., 7 inch diameter.....	3.60	1 1-3	60
45—1½ Gal., 8½ inch diameter.....	4.50	1	60
45—2 Gal., 9 inch diameter.....	6.00	5-12	50
45—3 Gal., 10 inch diameter.....	10.00	1-3	50
45—4 Gal., 11 inch diameter.....	12.00	1-12	50
45—5 Gal., 12 inch diameter.....	14.00	1-12	50
45—6 Gal., 13 inch diameter.....	20.00	1-12	50

LEMONADE JARS.		Net Price	Dozen	Wt.
No. 45—Tall Hand Made Lemonade Jars.		Per Doz.	in Bbl.	Per Bbl.
(Continued.)				
45—8 Gal., 14 inch diameter	27.00	1-12	50	
45—10 Gal., 15 inch diameter	30.00	1-12	50	
45—12 Gal., 16 inch diameter	33.00	1-12	50	

No. 14—Tall Display and Cover—Hand Made.
 14—1½ Gal., 7 in. in diameter, 9 in. high 6.00 2-3
 This display jar has rubber gasket between jar and cover.

CRATE PACKAGE CHARGE:
 1½ Gal., 1 dozen in crate, 60c.
 1½ Gal., ½ dozen in crate, 45c.

INVERTED SHOW JARS.				
4 Oz. Inverted Jar	.70	24	140	
8 Oz. Inverted Jar	.85	15	120	
16 Oz. Inverted Jar	1.15	6	100	
32 Oz. Inverted Jar	1.50	3	90	

Patented Hinged Cover Jars.				
½ Gallon, 5x6 inches	\$.90			
1 Gallon, 6x8 inches	1.25			
1½ Gallon, 7x9 inches	1.60			
3 Gallon, 8½x12 inches	2.00			
3½ Gallon, 9x12 inches	2.25			
4 Gallon, 9x13 inches	2.50			

Furnished complete, PACKAGE CHARGE,
 Corrugated Lined Crates.
 1 in a crate, 15c. 2 in a crate, 25c.
 3 in a crate, 35c. 4 in a crate, 45c.
 6 in a crate, 60c.

CAKE COVER OR CHEESE COVER				
6 inches	\$ 3.35	2	75	
7 inches	3.75	1½	60	
8 inches	4.25	1	60	
9 inches	4.75	2-3	50	
10 inches	5.50	½	50	
11 inches	6.75	5-12	50	
12 inches	8.00	¼	50	
13 inches	9.50	¼	50	
14 inches	11.00	1-6	45	
15 inches	13.50	1-6	45	
16 inches	20.00	1-6	45	
17 inches	27.50	1-6	45	
18 inches	42.00	1-12	30	
20 inches	54.00	1-12	35	

When ordering cake covers to fit salvers, be sure to specify this on your order and order cover 1 inch smaller than salver, thus:
 8 inch cake cover fits 9 inch salver.
 9 inch cake cover fits 10 inch salver.

Cake Salvers or Cake Stands.				
	List Price	Per Doz.		
2630—9 inch cake stand, height 5 inches	2.60	2	70	
2630—10 inch cake stand, height 5 inches	3.10	1½	70	
2630—12 inch cake stand, height 5½ inches	4.10	5-6	70	
99—9 inch cake stand, height 7¼ inches	4.50	1½	70	
99—10 inch cake stand, height 7¾ inches	4.90	1	70	
99—11 inch cake stand, height 8¼ inches	6.00	1	70	
99—12 inch cake stand, height 9 inches	8.80	½	60	
99—14 inch cake stand, height 10 inches	13.20	½	60	

Candy Containers.				
2616—1½ oz. Plain candy horn	.75	60	160	
Furnished with Cork Lined Cap.				
2833—2 oz. Figured candy horn	2.00	30	160	
2833—5½ oz. Figured candy horn	2.50	12	140	
No. 2833 horn is furnished complete with cap and cord.				
2834—5½ oz. Bottle horn, made for standard cork	2.50	12	140	
Furnished with cord only.				
Can furnish Glass Stopper to fit Bottle Horn at an extra cost of 40c per doz.				
Large revolver container, cap 5½ oz.	1.25	13	90	
Small revolver container, cap 1½ oz.	.67	35	100	
Revolvers furnished with cord lined caps.				
2630—6 oz. Candy Jar, patent metal top	1.10	36	30	
This jar has slip on top arranged so top is easily taken off.				
2827—"Sheaf of Wheat" Candy Bottle	.75	12	100	
2828—"On the Hog" Candy Bottle	.71	12	100	
2829—"Owl" Candy Bottle	.71	12	100	
2830—"Squirrel" Candy Bottle	1.00	10	120	
All the above Containers are fitted with Metal Caps.				

	Per Gross	Per Pack in Bbl.	Per Bbl.
1—Toy Tumbler, capacity 6 drams	3.30		
3—D. D. Mug, capacity 7 drams	3.60	100	200
6—Toy Mug, capacity 6 drams	3.60	100	200
91—Toy Mug, capacity 2½ ounces	3.60	100	200
135—Toy Mug	3.60	100	225
130—Toy Mug, capacity 4 ounces	4.80	28	200
140—Toy Mug, capacity 4 ounces	4.80	28	200
If furnished with Cap, add 75c per gross.			
2658—Mug, Capacity 4 ounces	7.80	23½	150
Boat, capacity 8 ounces	22.00	12	125
Furnished with Nickle Plated Cork Lined Cap.			
Clock Container, capacity 2½ ounces	10.00	35	150
Furnished with Metal Screw Back.			

Candy Jars—Blown.				
	Nickle Plated Zinc Cap	Nickle Plated Cork Liner	Polished Tin Cap	Orig. Package Quantity
½ ounce	5.80	6.00	5.00	120
1 ounce	6.50	6.80	5.80	100
2 ounce	8.00	8.40	6.90	60
4 ounce	9.40	10.00	8.30	36
4 ounce, extra tall	9.40	10.00	8.30	36
6 ounce	12.30	12.50	11.00	31

8 ounce	13.60	14.40	11.90	18	100
12 ounce	17.90	19.30	15.00	12	100
16 ounce	19.80	21.10	17.50	6	100
32 ounce	26.00	28.00	22.50	4	90

Footed Sherbets.				
	Price Per Dozen	Original Package Quantity	Per Dozen	Wt. Per Bbl.
3—Footed sherbet, cup foot, 5 oz. cap.	.90	22	110	
3½—Footed sherbet, optic cup foot, 5 oz. cap.	1.00	22	110	
4—Footed Sherbet, cup foot, cap. 6¼ oz.	1.00	15	110	
4½—Footed sherbet, 6¼ oz. optic cup foot	1.10	16	110	
5—Footed sherbet, saucer foot, capacity 5 oz.	1.20	18	110	
6—Footed sherbet, flat foot, capacity 5 oz.	.80	22	110	
7—Footed sherbet, capacity 3½ oz., fkat foot	.80	30	110	
8—Footed and handled sherbet, 3½ oz., flat ft.	1.00	28	110	
9—Colonial sherbet, saucer foot, cap. 3½ oz.	.90	28	110	
10—Footed sherbet, colonial, 5 oz. cap., flat ft.	1.10	18	150	
11—Footed sherbet, saucer foot, cap. 3½ oz.	1.10	30	115	
12—Footed sherbet, saucer foot, cap. 3½ oz.	.80	30	115	
14—Footed sherbet, cup foot, cap. 4½ oz.	.90	18	120	
14½—Footed sherbet, shammed, 3 oz. colonial	1.20	16	160	
15—Footed sherbet, saucer foot, cap. 6¼ oz.	1.30	16	120	
15½—Footed sherbet, saucer, cap. 6¼ oz. optic	1.40	15	120	
16—Footed sherbet, saucer foot, touraine shaped, capacity 5. oz.	1.20	16	110	

2800-90½—3 oz. Footed sherbet, A Round	1.00	25	140
2800-90½—3½ oz. Footed sherbet, C Belled	1.00	25	140
2800-90—4½ oz. Footed sherbet, E Crimped	1.10	24	120
2800-91¼—6 oz. Footed sherbet, A Round	1.20	12	130
2893—Footed sherbet, flat foot, capacity 5 oz.	.90	15½	120
2630—Footed sherbet, flat foot, cap. 4½ oz.	.80	20	110
2800-85—Footed sherbet, flat foot, cap. 3 oz.	.90	20	130
2800-86—Footed sherbet, flat foot, cap. 4 oz.	1.00	20	120
2800-87—Footed sherbet, crimped, cap. 3½ oz.	1.00	24	130
2800-90—Footed sherbet, crimped, cap. 4½ oz.	1.00	24	120
2800-86—Footed sherbet, belled, cap. 3½ oz.	.90	24	130
2800-89—Footed sherbet, belled, cap. 4½ oz.	1.00	20	120
2800-91—Footed sherbet, belled, cap. 5 oz.	1.20	18	120
2750—Banana split, footed, 6¼ inches long	2.00	8	120

Handled Custards.				
	Price Per Dozen	Original Package Quantity	Per Dozen	Wt. Per Bbl.
1—Custard, stuck handle, cap. 4 oz.	1.10	30	140	
3—Custard, pressed handle, cap. 4 oz.	.84	30	140	
3½—Custard, pressed handle, cap. 4½ oz.	.84	30	140	
2476—Custard, pressed handle, cap. 4¼ oz.	.80	32	145	
2477—Custard, pressed handle, cap. 5¼ oz.	.80	30	150	
2478—Custard, pressed handle, cap. 4 oz.	.84	40	160	
2478½—Custard, pressed handle, Optic, cap. 4 oz.	.84	40	160	
2479—Custard, pressed handle, cap. 3 oz.	.80	45	160	
2480—Custard, pressed handle, cap. 4 oz.	.90	30	150	
2481—Custard, pressed handle, cap. 4½ oz.	.84	30	150	
2482—Custard, pressed handle, cap. 4½ oz.	.90	30	150	
2542—Custard, pressed handle	.84	32	150	
2571—Custard, pressed handle	.84	32	150	
2572—Custard, pressed handle	.84	32	150	
2620—Custard, stuck handle, cap. 5 oz.	1.10	30	150	
2621—Custard, stuck handle, cap. 5 oz.	1.10	30	150	
2630—Custard, pressed handle, cap. 4½ oz.	.80	30	150	
2800—81 4 oz. Custard, stuck handle	1.30	30	150	
(Cut bottom)				
2800—82 5 oz. Custard, pressed handle	.90	30	150	
(Cut bottom)				
2800—83 6 oz. Custard, pressed handle	1.00	25	140	
(Cut bottom)				

Ice Cream Saucers.				
	Price Per Dozen	Original Package Quantity	Per Dozen	Wt. Per Bbl.
2590—4¼ inch	.70	35	130	
2630—6 inch	.80	20	125	

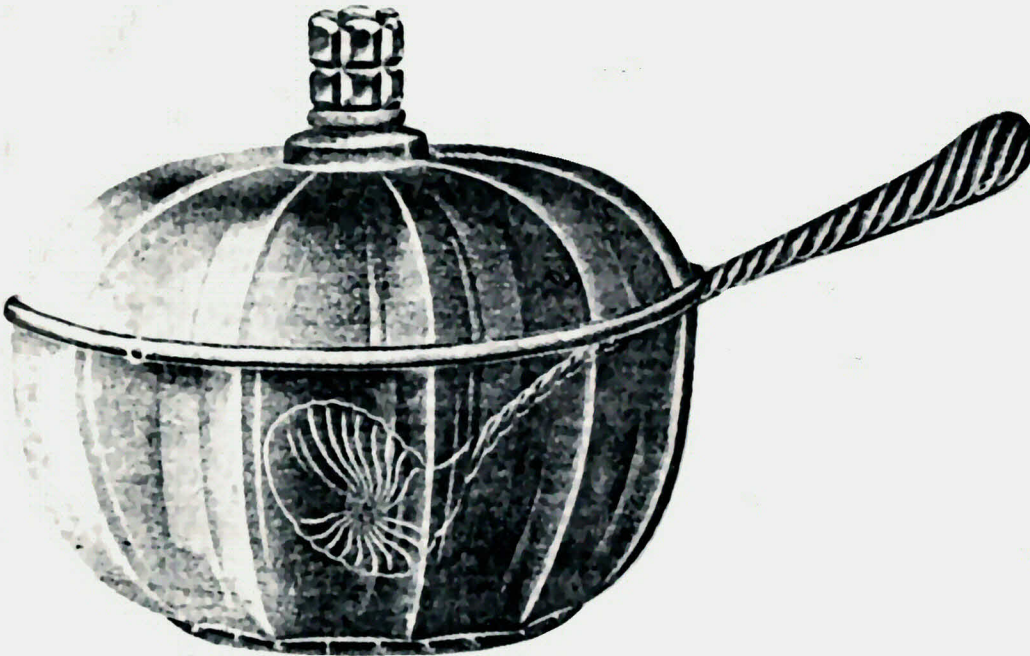
Ice Cream Cone Holder.				
	Price Per Dozen	Original Package Quantity	Per Dozen	Wt. Per Bbl.
2800-93½—Ice Cream Cone Holder	.60	50	175	

Tumblers—Pressed—For Water or Grape Juice.				
	Price Per Dozen	Original Package Quantity	Per Dozen	Wt. Per Bbl.
8—4½ oz. Optic Tumbler, ground bottom	.85	45	105	
39—5 oz. Tumblers	.86	34	130	
173—6 oz. Tumblers, post bottom	.40	33	150	
174—5½ oz. Tumbler	.40	36	130	
500—4½ oz. Tumbler	.70	35	125	
501—5 oz. Tumbler	.70	32	125	
514—4 oz. Tumbler, tall	.80	40	125	
515—5 oz. Tumbler	.66	45	150	
2719—5 oz.	.80	30	125	
507½—7 oz. Belled Tumbler	.96	20	150	
413½—11 oz. Optic Tumbler	.96	22	150	
453—13 oz. P Handled Soda	1.20	11	135	

Soda Tumblers.				
	Price Per Dozen	Original Package Quantity	Per Dozen	Wt. Per Bbl.
496—8 oz., fits standard holder, Bell top	.84	20	150	
496½—8 oz. Optic, fits standard holder, Bell top	.94	20	150	
498—9 oz. plain, fits standard holder, Bell top	.84	17	135	
498½—9 oz. Optic, fits standard holder, Bell top	.94	16	150	
495—11½ oz., fits standard holder, Bell top	1.00	16	150	
495½—11½ oz. Optic, fits stan. holder, Bell top	1.10	16	150	
407½—9 oz. taper Soda Sham	1.20	25	200	
409—11½ oz. taper Soda	.86	22	195	
410—13 oz. Lemonade, taper Soda	.92	20	150	
414—13 oz. taper Soda	.92	23	200	
417—14½ oz. taper Soda plain	.96	17	200	
417½—14½ oz. taper Soda Optic	1.06	17	200	
421—18 oz. Mixing Tumbler, plain	1.58	15	140	
425—12½ oz. taper	.92	20	175	
428—12 oz. taper	.92	20	190	
428½—12 oz. taper sham	1.25	20	275	
438½—12 oz. taper Optic	1.02	22	190	

Ice Tea Tumbler.				
	Price Per Dozen	Original Package Quantity	Per Dozen	Wt. Per Bbl.
445—Polished bottom, 12 oz.	1.20	9½	125	
446—Ground bottom, 12 oz.	1.20	13	125	
497—10 oz. Plain taper, heavy bottom	1.25	18	140	
2630—Ground bottom, fluted, 12 oz.	.90	16	170	

Champagne Glasses.				
	Price Per Dozen	Original Package Quantity	Per Dozen	Wt. Per Bbl.
813—6 oz. Hollow Stem Champagne	1.50	12	150	



No. 1. 9 inch Crushed Fruit Bowl and Cover.

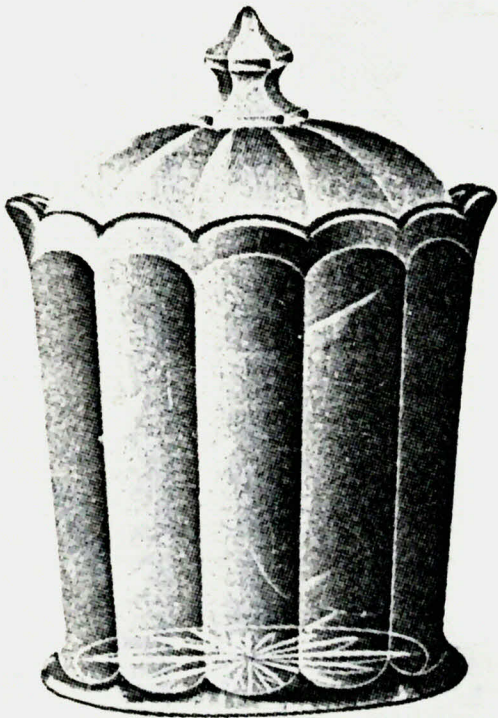
ILLUSTRATIONS
 1/2 SIZE



No. 2631. Tall Crushed Fruit Bowl and Cover. Pressed.



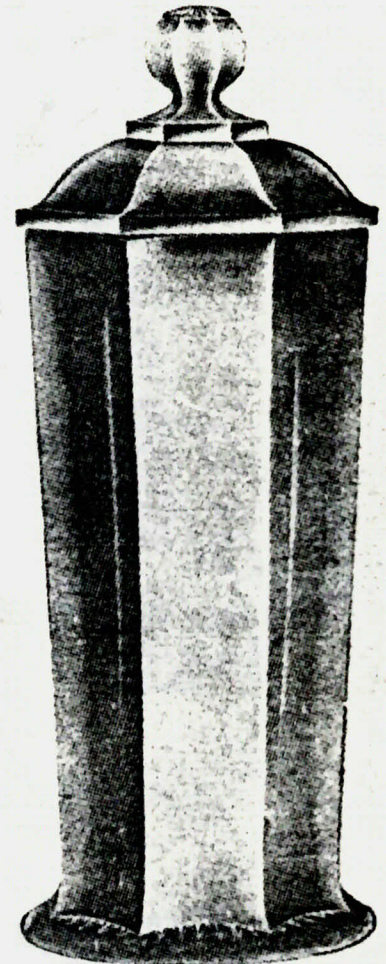
No. 2. Crushed Fruit Bowl with Slotted Cover for Spoon.



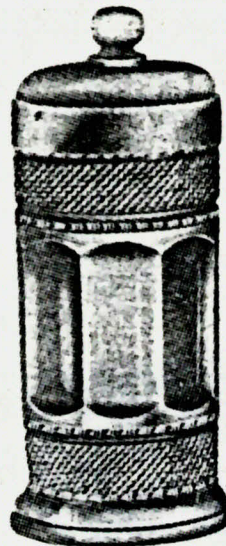
No. 2650. Tall Crushed Fruit Bowl and Cover.



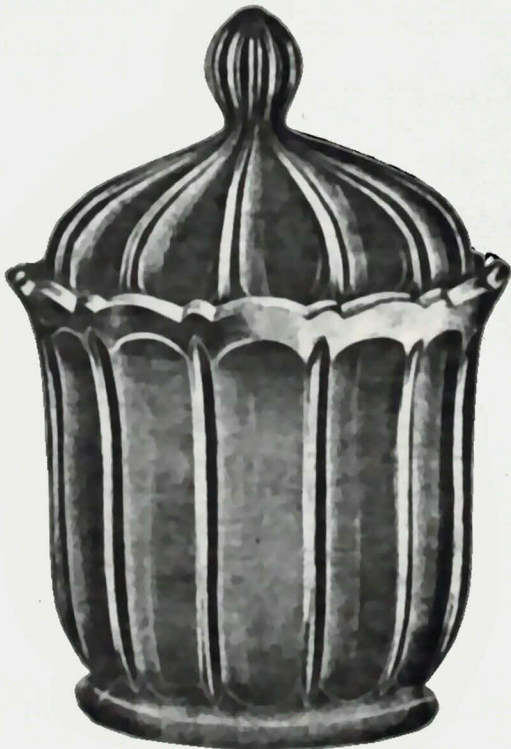
No. 2750. Straw Jar. No Cover.
Pressed.
Illustration $\frac{1}{2}$ size.



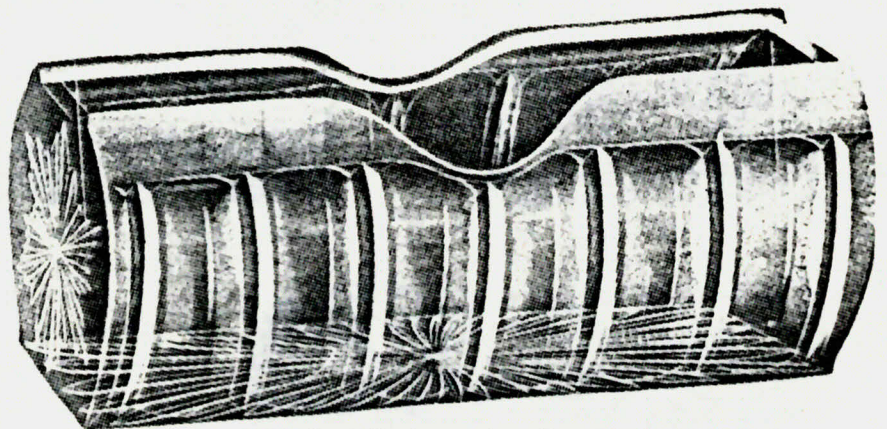
No. 2630. Straw Jar and Cover.
Pressed. Illustration $\frac{1}{2}$ size.



No. 2719. Straw Jar and Cover.
Height over all $9\frac{1}{2}$ inches.
Illustration $\frac{1}{3}$ size.



No. 2762 $\frac{1}{2}$. Sanitary Crushed Fruit Bowl and Cover.
Bowl has Special Inside Rim to prevent liquids from gathering on Cover.

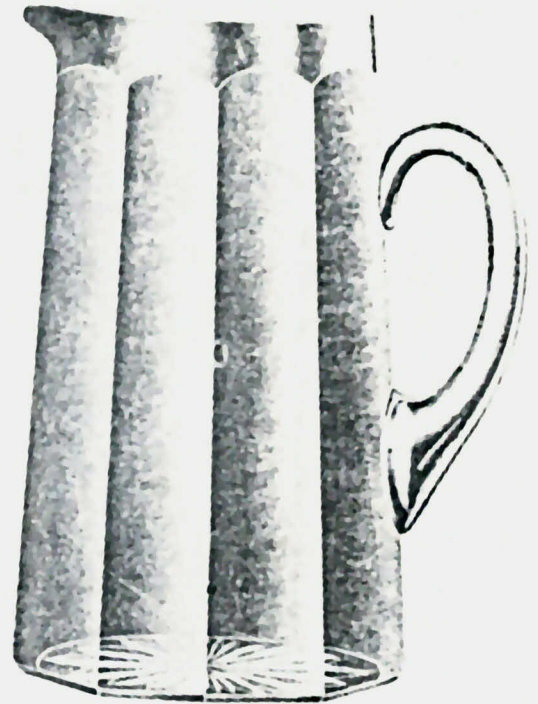


No. 2762. Sanitary Straw Tray.
Length 10 inches.
Pressed.



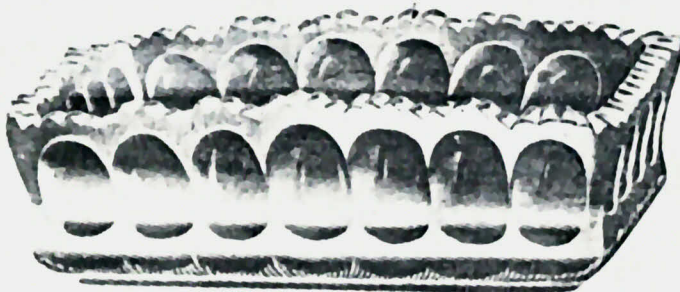
No. 96. ½ Gallon Pitcher.
Stuck Handle.
Blown.

Syrup
Pitchers
Blown

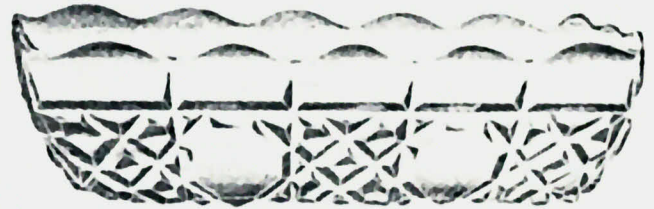


No. 2630. ½ Gallon Pitcher.
Stuck Handle.
Blown.

CANDY TRAYS AND PLATES
PRESSED



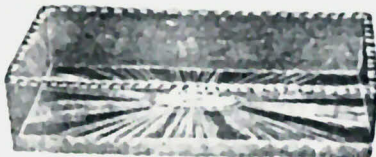
No. 2682. Candy Tray. Made in 7, 8, 9 in. sizes.



No. 120. Candy Tray. Made in 7, 8, 9 in. Sizes.



No. 7. Candy Tray, 5x8 in.



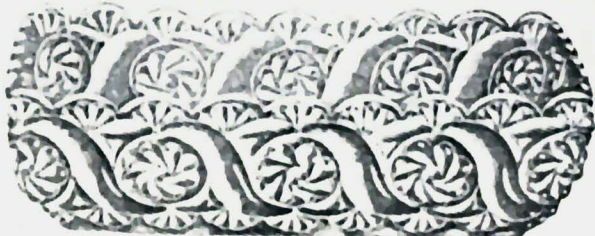
No. 1. 6x8 in. Candy Tray. Standard size.



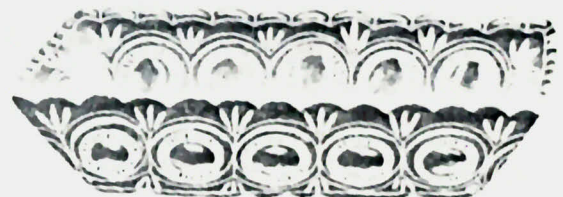
No. 2. 5x8 in. Post Cant Tray Standard Size.



No. 67. Candy Tray.
Made in 7, 8, 9 in. Sizes.

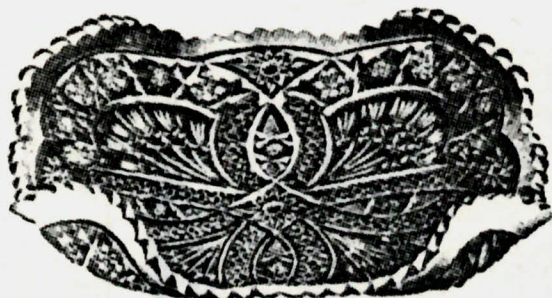


No. 130. Candy Tray. Made in 7 and 8 in. sizes.

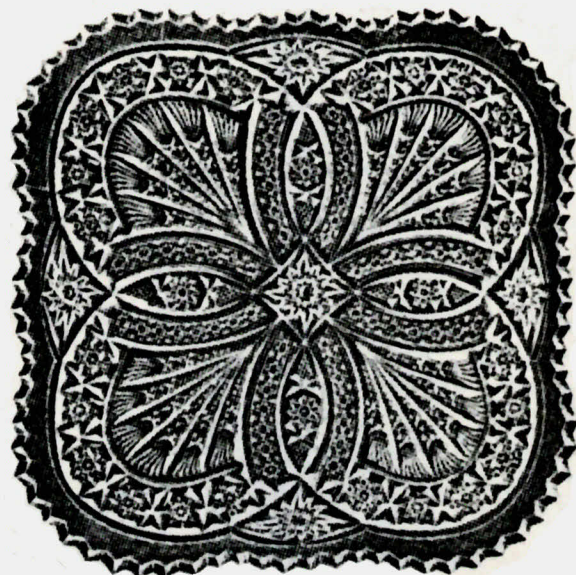


No. 2507. 7 in. Oblong Candy Tray.

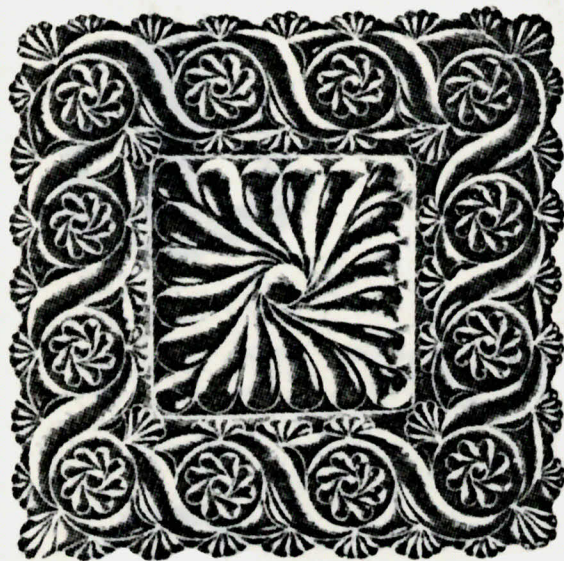
CANDY TRAYS AND PLATES
PRESSED



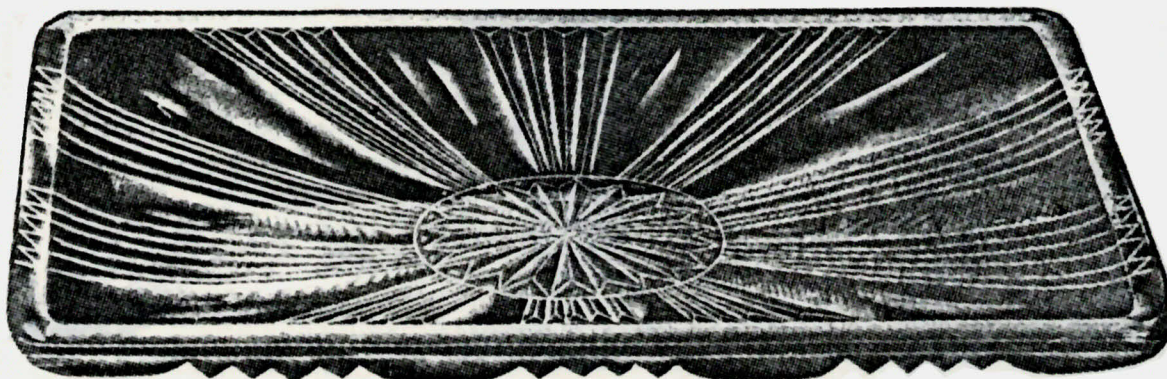
No. 2660. Turned Up Edge Candy Plate.
7 in. Square.



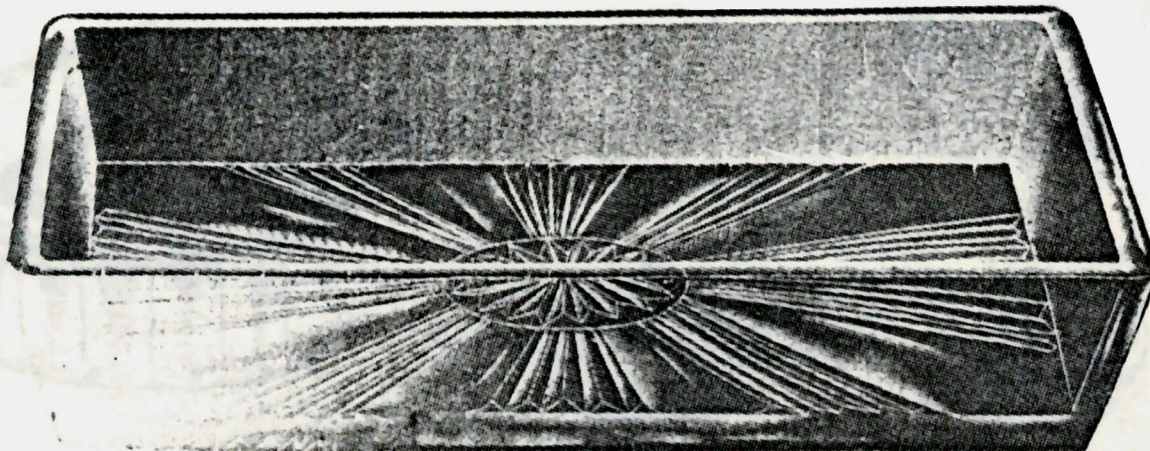
No. 2660. 7 inch Square Candy Plate.



No. 130. 7 inch Square Candy Plate.



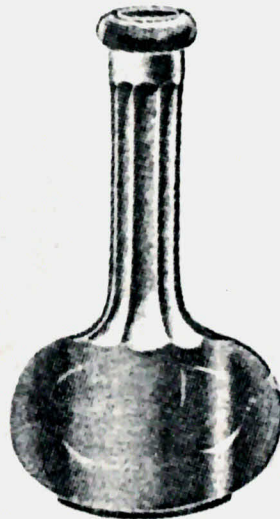
No. 2544. 5 1/2 x 7 1/2 inch Candy Plate.



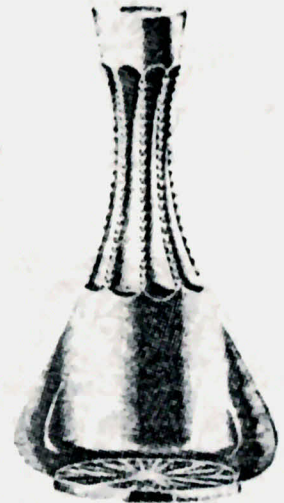
No. 2545. Candy Tray. Actual size 5 1/2 x 7 1/2 in.



No. 1125. Bitter Bottle.
Blown.
Capacity 9 ounces.

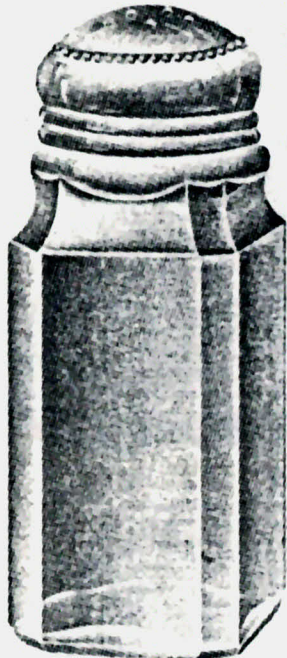


No. 1115. Bitter Bottle. Blown.
Plain or Engraved.
Capacity 11 ounces.



No. 1116. Bitter Bottle.
Plain or Engraved.
Capacity 9 ounces.

Bitter Bottles furnished with or without
Metal Tubes.



No. 1011. Shaker. Heavy Blown.
Actual Size.



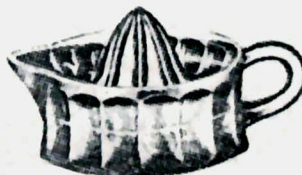
Graduates. Engraved.
Guaranteed for accuracy.
For sizes see price list.



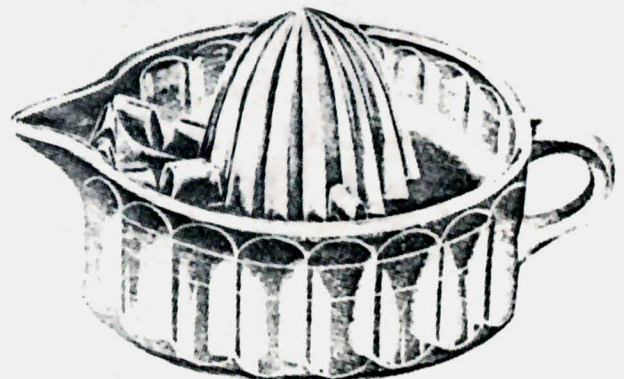
No. 2630. Sugar Duster.
Illustration 1/2 size.



No. 2698. Lemon Extractor.
Pressed.
Illustration 1/4 size.



No. 2674. Lemon Extractor.
Pressed.
Illustration 1/3 size.



No. 2761. Grape Fruit or Orange Juice
Extractor.
Pressed.
Illustration 1/2 size.

TABLET, CANDY AND SHOW JARS
BLOWN



No. 1.
For sizes see
price list.



No. 2.
Made in 4 and
9 lb. sizes.



No. 3.
Made in 4 and
5 lb. sizes.



No. 4.
Made in 3 and
5 lb. sizes.



No. 9.
4 lb. Jar.



No. 7.
Made in 2 and 4 lb.
sizes.

No. 8.
Same style
as No. 1



No. 11. Candy Jar. Squat.
Capacity 42 oz.



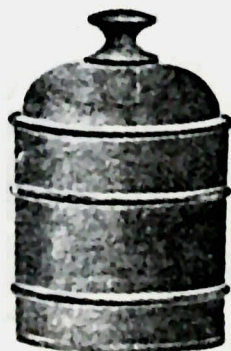
No. 2630. 6 oz. Candy
Jar with Patent
Swing Cover.



No. 19.
Tall Ring Jar & Cover.
For sizes see
price list.



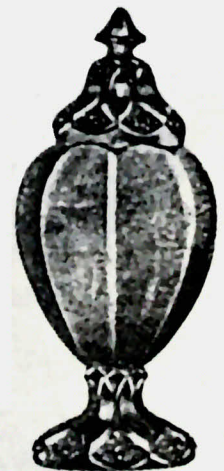
French Jar and Cover.
Capacity 1 gallon.



No. 25. Squat Ring Jar & Cover.
Made in $\frac{1}{2}$, $\frac{3}{4}$ and 1 gallon
sizes.



Roman Globe Jar & Cover.
Capacity 1 gallon.
Ground on Cover.



Venetian Jar & Cover.
Capacity $1\frac{1}{2}$ gallon.
Ground on Cover.



No. 20. Round Display Globe and Cover.
Hand Made.



No. 40. Low Lemonade Jar.
Hand Made.



No. 25. Round Display Globe and Cover.
Hand Made.



No. 45. Tall Lemonade Jar.
Hand Made.



No. 34. Footed Display Globe and Cover.
Hand Made.

FOR SIZES SEE
PRICE LIST



No. 14. Tall Display Jar and Cover.
Hand Made.



No. 2630. Salver. Pressed.
Made in 9, 10, 12 inch sizes.

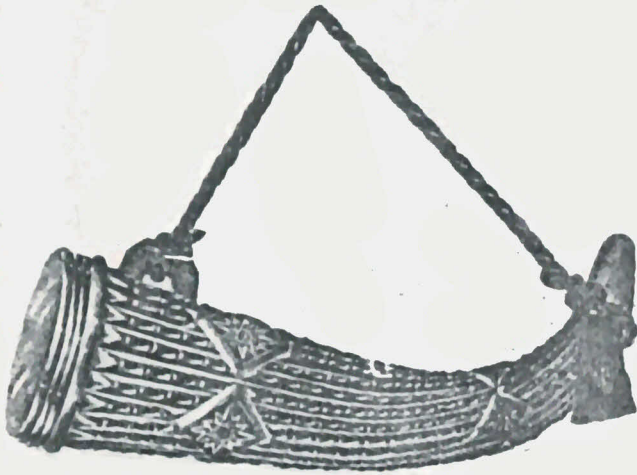


Cake and Cheese Covers.
All Sizes. Hand Made.
For prices see price list.

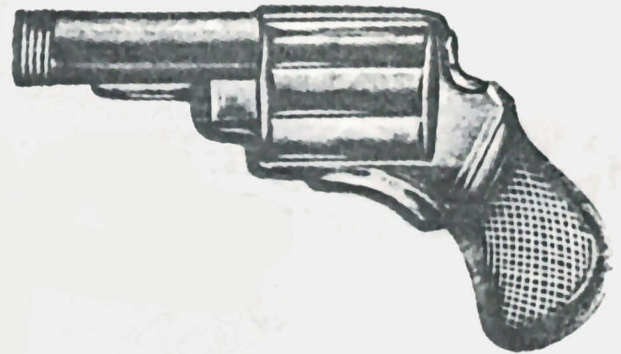
When ordering Cake Covers to fit No. 99
Salvers be sure to specify, and always order
Salver 1 inch large than cover.



No. 99. Plain Salver. Pressed.
For sizes see price list.



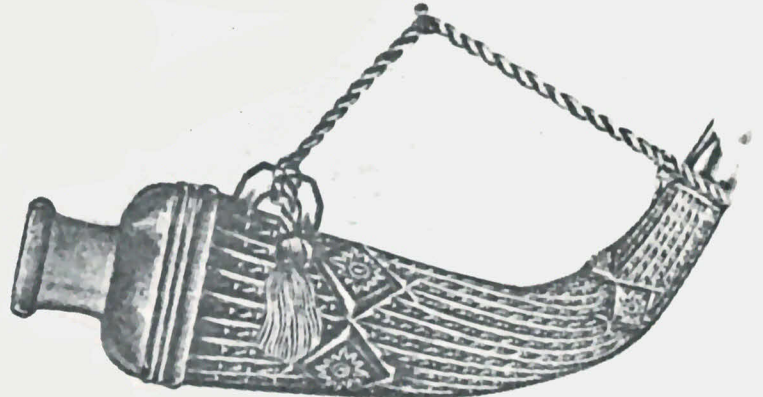
No. 2833. Candy Horn. Pressed.
 Made in small 2 oz. size. packing 30 dozen in a barrel.
 Also made in large 5½ oz. size. packing 10½ dozen in a barrel.
 Furnished complete with cord and metal cap.



Large Revolver. Blown. Capacity 5½ oz.
 Pack 12 dozen in barrel.
 Small Revolver. Blown. Capacity 1½ oz.
 Pack 35 dozen in barrel.



No. 2616. 1½ oz. Horn. Blown.
 Pack 40 dozen in a barrel.
 Furnished with Metal Caps.



No. 2834. Bottle Horn. Fancy Cord for each Bottle. Pressed.
 Capacity 5½ oz. Made for Regulation Cork.
 Pack 10½ dozen in a barrel.

NOS. 100, 150, 175 CANDY JARS
 TAKE THE SAME PRICE.



No. 100. Candy Jar.
 Blown.
 Made in ¼, 1, 2, 4, 6,
 8, 12, 16, 32 oz.
 Capacities.



No. 100. Candy Jar.
 Blown.
 Extra Tall.
 4 oz. capacity only.



No. 150. Candy Jar.
 Blown.
 Made only in 12 oz.



No. 175. Candy Jar.
 Blown.
 Made in 4, 8, 12 oz
 Capacities.

FOOTED SHERBETS
PRESSED



No. 3. Footed Sherbet.
Cup Foot.
Capacity 5 ounces.



No. 3. Footed Sherbet.
Cup Foot Optic.
Capacity 5 ounces.



No. 4. Footed Sherbet.
Capacity 6½ ounces.
Also made Belled Shape.



No. 5. Saucer Foot Sherbet.
Capacity 5 ounces.
Also made Belled Shape.



No. 6. Footed Sherbet.
Capacity 5 ounces.



No. 8. Handled Footed Sherbet.
Capacity 3½ ounces.
Also made without Handle No. 7.



No. 9. Colonial Sherbet.
Capacity 3½ ounces.
Saucer Foot.



No. 10. Colonial Sherbet.
Capacity 5 ounces.



No. 11. Saucer Foot Sherbet.
Capacity 3½ ounces.

FOOTED SHERBETS
PRESSED



No. 12. Footed Sherbet.
Capacity 3¼ ounces.



No. 14. Colonial Sherbet.
Capacity 4½ ounces.

Also made sham.
Capacity 2½ ounces.



2800-93½
Ice Cream Cone
Holder.



No. 15. Sherbet.
Saucer Foot. 6¼ ounces.
Also made Optic.



No. 16. Saucer Foot Sherbet.
Capacity 5 ounces.



No. 2800-92.
4¼ in. Footed Sherbet.
Capacity 6 ounces.



No. 2892. Footed Sherbet.
Capacity 6 ounces.



No. 2630. Footed Sherbet.
Capacity 4½ ounces.



Footed Sherbet.
Round.
No. 2800-5.
Capacity 3 oz.
No. 2800-88.
Capacity 4 oz.



Footed Sherbet.
Belled.
No. 2800-86.
Capacity 3½ oz.
No. 2800-89.
Capacity 4½ oz.



Footed Sherbet.
Cupped.
No. 2800-87.
Capacity 3½ oz.
No. 2800-90.
Capacity 4½ oz.



2800-90½. A Round.
2800-90½. C Belled.
Footed Sherbet.



No. 2800-91.
Footed Sherbet.
Capacity 5 oz.



No. 2800-92½.
4¼ in. Footed Sherbet.
Heavy Pressed.
Capacity 6 ounces.

HANDLED CUSTARDS
PRESSED



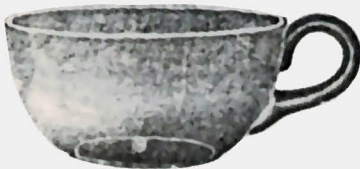
No. 2750. Oval Banana Split.
Length 6 3/4 inches.



No. 1. Plain Custard.
Stuck Handle.
Capacity 4 ounces.



No. 3. Pressed, Handled Custard.
Capacity 4 ounces.



No. 3 1/2. Custard.
Capacity 4 1/2 ounces.



No. 2476. Custard.
Capacity 4 1/4 ounces.



No. 2477. Custard.
Capacity 5 1/4 ounces.



No. 2478. Custard.
Capacity 4 ounces.



No. 2478. Custard Optic.
Capacity 4 ounces.



No. 2479. Custard.
Capacity 3 ounces.



No. 2750. Colonial Custard.
Capacity 4 ounces.



No. 2481. Custard.
Capacity 4 1/2 ounces.



No. 2482. Custard Optic.
Capacity 4 1/2 ounces.



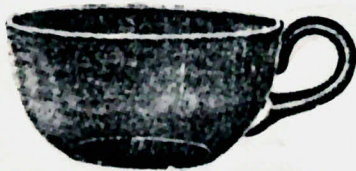
No. 2542. Custard.
Capacity 5 ounces.



No. 2571. Custard.
Capacity 4½ ounces.



No. 2572. Custard.
Capacity 4½ ounces.



No. 2620. 5 ounce Plain Custard.
Stuck Handle.



No. 2621. 5 ounce Flared Custard.
Stuck Handle.



No. 2630. Colonial Custard.
Capacity 4½ ounces.



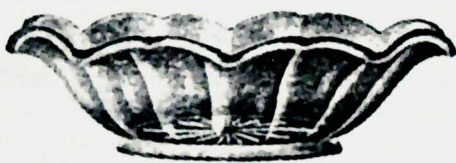
No. 2800-81. Custard.
Stuck Handle.
Capacity 4 ounces.



No. 2800-82. Custard.
Pressed Handle.
Capacity 5 ounces.



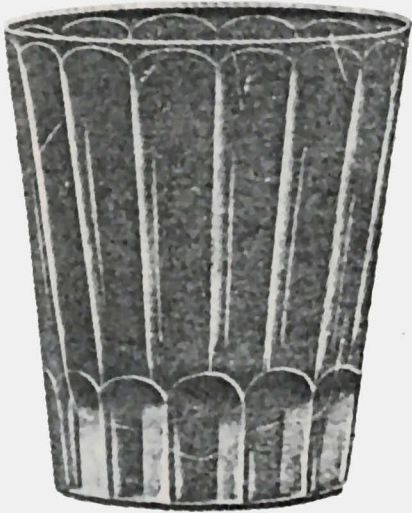
No. 2800-83. Custard.
Pressed Handle.
Capacity 6 ounces.



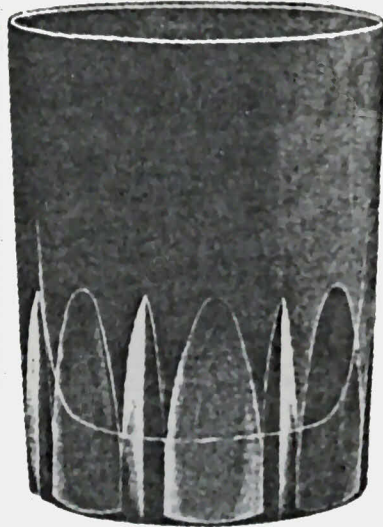
No. 2630. 6 inch Ice Cream Saucer.



No. 2590. Plain 4¼ inch Ice Cream Saucer.



No. 8. 4 1/2 ounce Optic Tumbler.

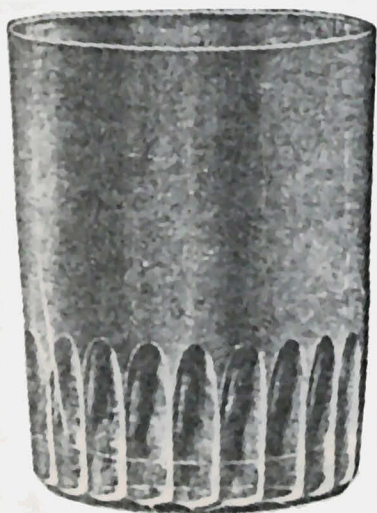


No. 39. 5 ounce Tumbler.

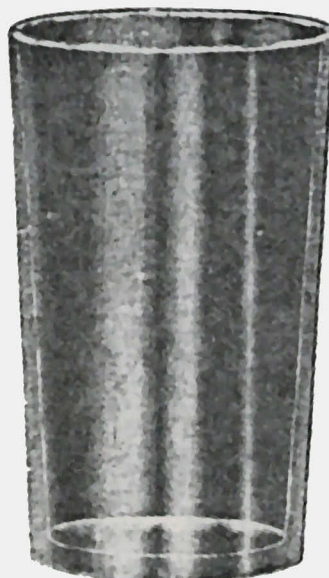


No. 173. 6 ounce Tumbler.

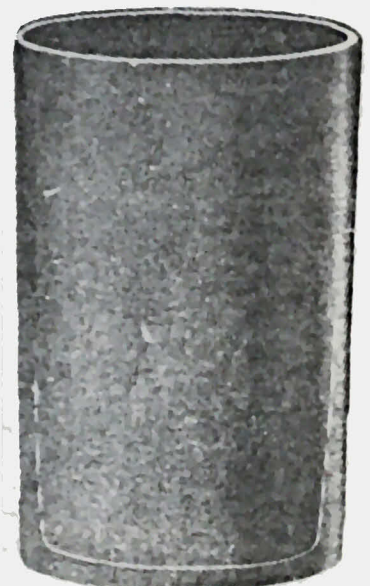
ILLUSTRATIONS
FULL SIZE



No. 38. 5 ounce Tumbler.



No. 500. 4 1/2 ounce Tumbler.



No. 501. 5 ounce Tumbler.

TUMBLERS
PRESSED



No. 514. 4 ounce Tumbler.



No. 515. 5 ounce Tumbler.



No. 2719.
5 ounce Tumbler.
Illustration 1/2 size.



No. 496. 8 ounce Bell Soda Tumbler.
Fits Standard Holder.

ILLUSTRATIONS
FULL SIZE



No. 496 1/2. 8 ounce Bell Optic Soda Tumbler.
Fits Standard Holder.



No. 498. 9 ounce Bell Tumbler.
Fits Standard Holder.

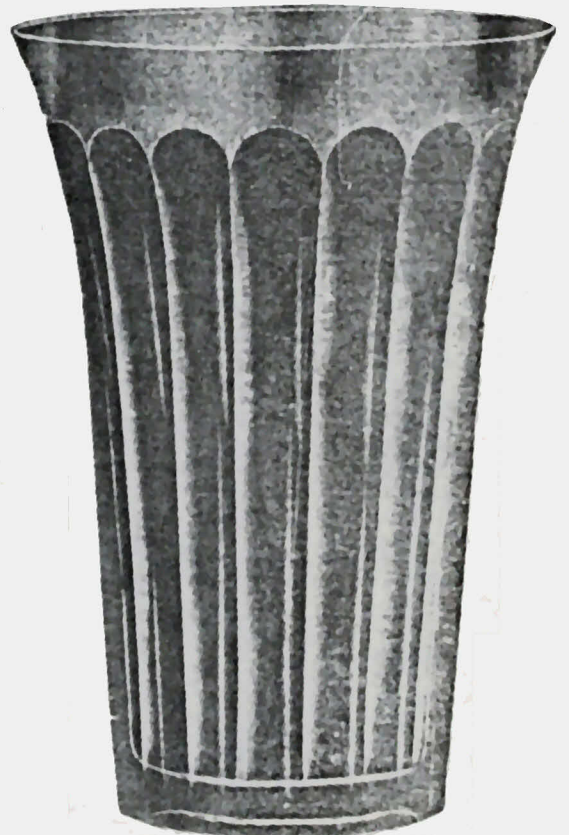


No. 498½. 9 ounce Optic Bell Tumbler.
Fits Standard Holder.



No. 495. 11½ ounce Bell Tumbler.
Fits Standard Holder.

ILLUSTRATIONS
FULL SIZE



No. 495½. 11½ oz. Optic Bell Tumbler.
Fits Standard Holder.

SODA TUMBLERS
PRESSED



No. 407½. 8½ oz. Tumbler.

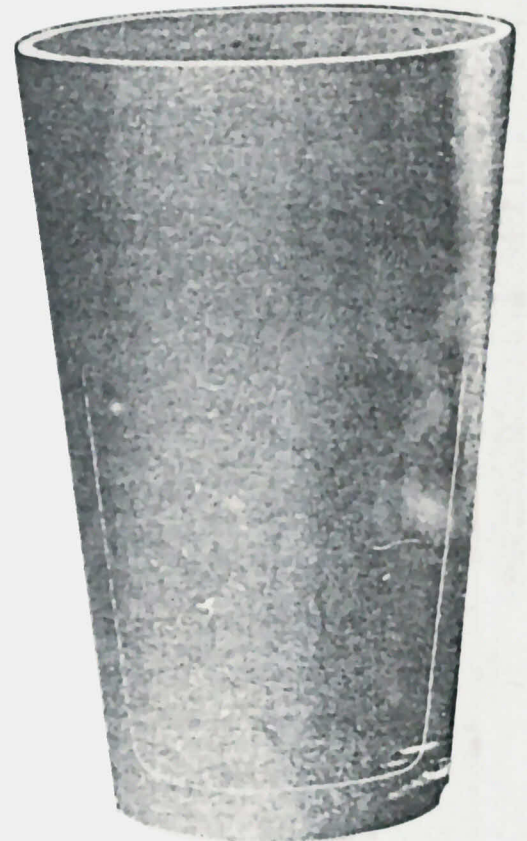


No. 409. 11½ ounce Tumbler.
Also made Optic.

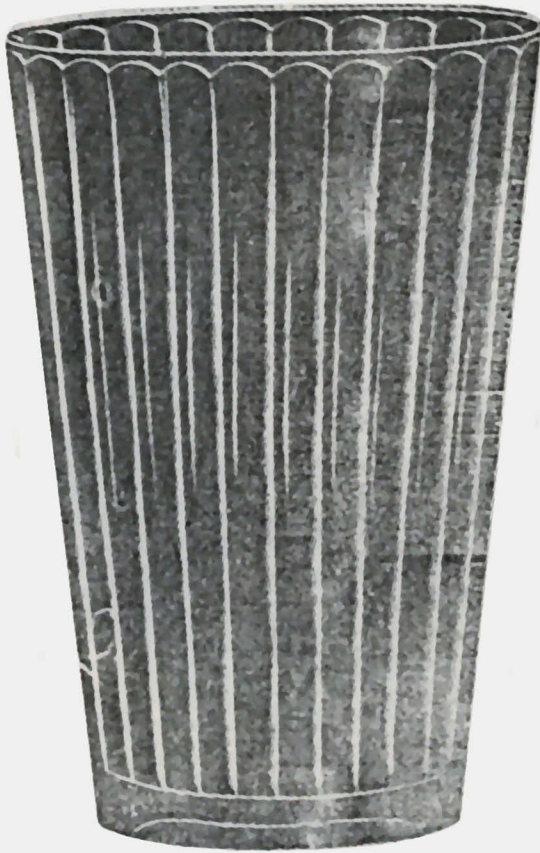


No. 414. 13 ounce Tumbler.
Also made Optic.

ILLUSTRATIONS
FULL SIZE

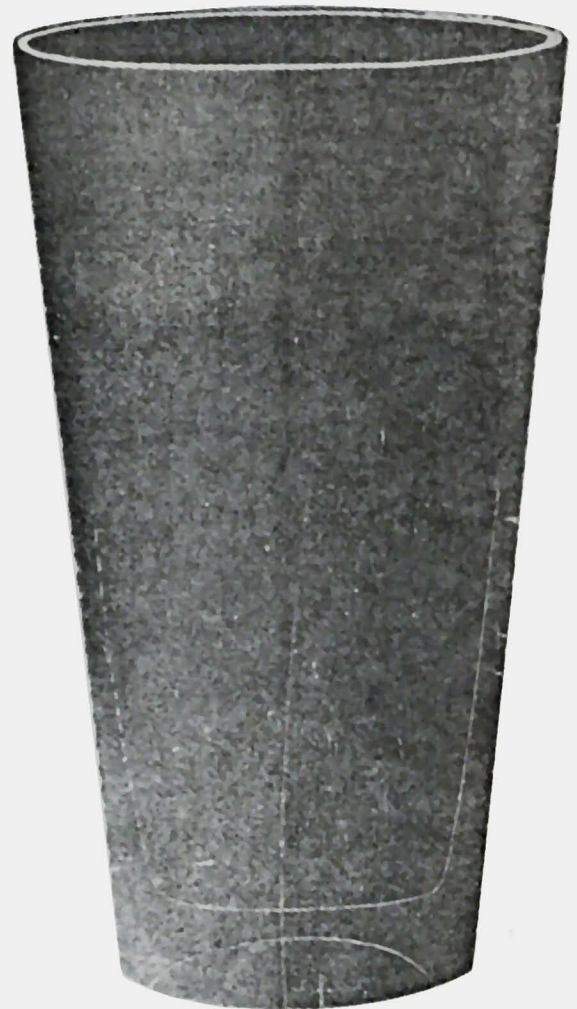


No. 410. 13 ounce Tumbler.
Also made Optic.



No. 417½. 14½ oz. Optic Soda Tumbler.
Also made plain.

ILLUSTRATIONS
FULL SIZE



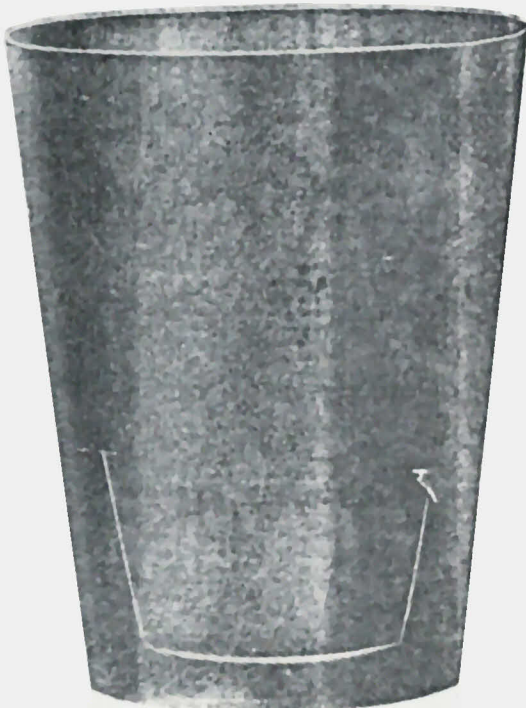
No. 421. 18 ounce Mixing Tumbler.



No. 425. 12 1/2 ounce Tumbler.
Also made Cupped.

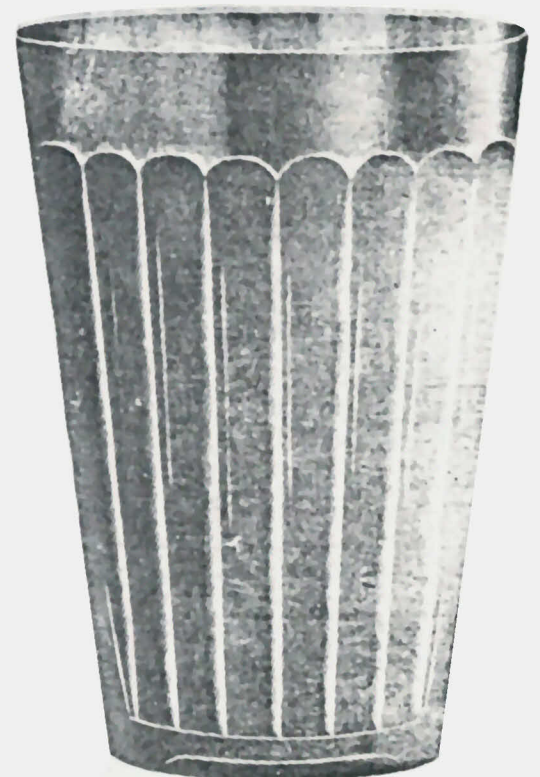


No. 428. 12 ounce Soda Tumbler.



No. 428 1/2. 12 ounce Soda Tumbler Sham.

ILLUSTRATIONS
FULL SIZE



No. 438 1/2. 12 ounce Optic Soda Tumbler.



No. 445. Ice Tea Tumbler.



No. 446. Ice Tea Tumbler.



No. 497. 10 ounce Soda Tumbler.

ILLUSTRATIONS
FULL SIZE



No. 2630. Ice Tea Tumbler.



No. 507½. 8 ounce Belled Tumbler.



412½. 11 oz. Optic Soda Tumbler.



No. 813. 6 oz Hollow Stem Champagne.

Just the glass for sparkling drinks such as Ginger Ale, Root Beer and other beverages that bubble as a constant stream of bubbles arise from stem, making a very inviting appearance.



453. 13 oz. Pressed Handled Soda.
Pack 11 dozen in barrel.



No. 2827.
"Sheaf of Wheat"
Candy Bottle.
Capacity 3 to 4 oz.



No. 2829.
"Owl" Candy
Bottle.
Capacity 3 to 4 oz.

Something Entirely New in Candy Bottles.

As these are new and have never been made
we can only estimate capacity.

All fitted with Metal Screw Cap.



No. 2828.
"On the Hog"
Candy Bottle.
Capacity 3 to 4 oz.



No. 2830.
"Squirrel" Candy
Bottle.
Capacity 3 to 4 oz.



No. 1. Toy Tumbler.
Capacity 6 Drams.



No. 3. D. D. Mug.
Capacity 7 Drams.



No. 6. Toy Mug.
Capacity 6 Drams.



No. 91. Toy Mug.
Capacity ½ ounce.



No. 130. 4 oz. Mug.
With or without
Tin Cap.



No. 140. 4 oz. Mug.
Furnished with or
without Tin Cap.
Capacity 4 oz.



No. 135. Toy Mug.
Capacity ½ oz.



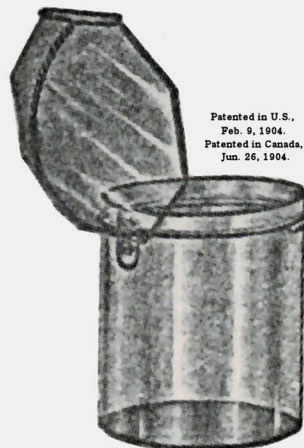
Boat.
Capacity 8 oz.
Furnished with Metal Cap.



No. 2658. Mug.
Capacity 4 oz.
Price 65c Dozen
Pack 23½ Doz. in Bbl.

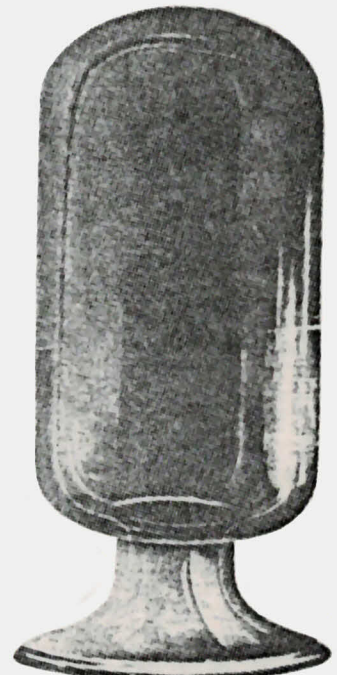


Clock Container.
Capacity 2½ oz.
Furnished with Metal
Back Cap.



Patented in U.S.,
Feb. 9, 1904.
Patented in Canada,
Jun. 26, 1904.

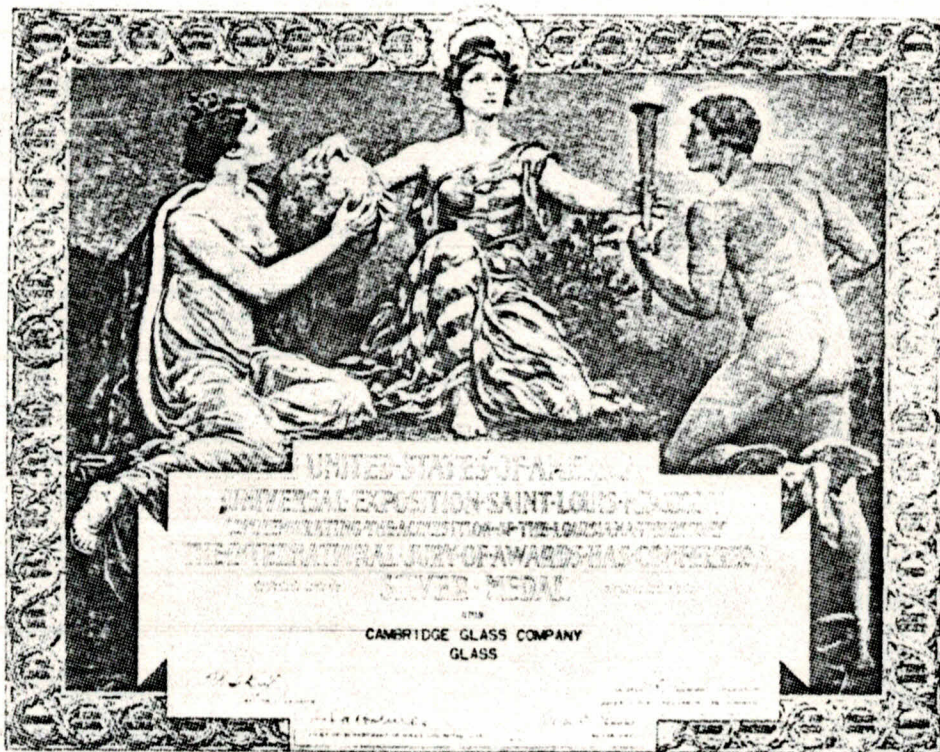
Patented Hinged
Cover Jars.



Inverted Show Jars.
Made in 4, 8, 16, 32 oz. capacities.

WE manufacture a full line of *fine*
Lead Blown Tumblers, Stem-
ware, Etc. Let us have your require-
ments and we will be very glad to send
you our catalog showing our entire line
of above and quote you prices.

MANUFACTURERS
OF
"Near-Cut" Glass



"Near-Cut" Glass was Awarded the Highest Premium at St. Louis



